

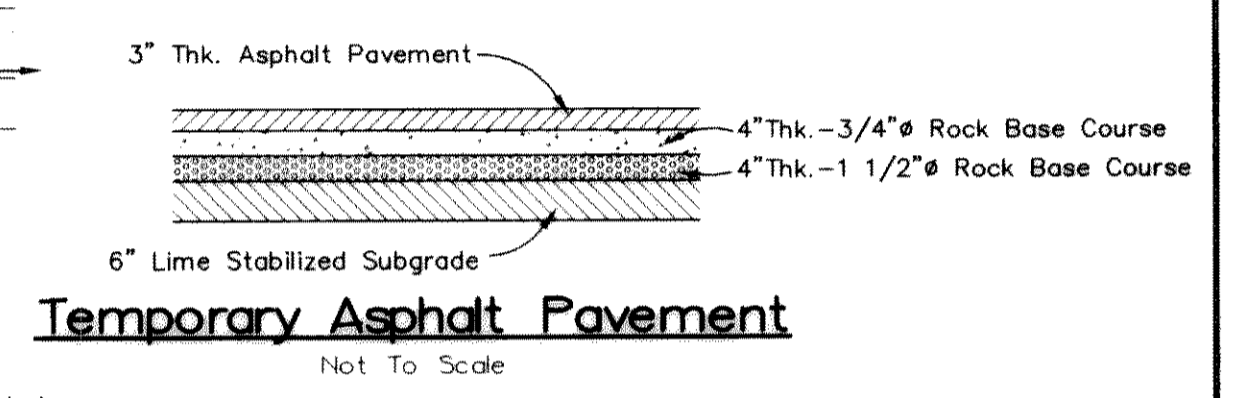
Bench Mark 1
 A Standard U.S.C.&G.S. Disk Stamped 'M 929 1946'
 Approx. 1.9 miles southeast along State Hwy. 205
 from Courthouse at Rockwall to bridge at Buffalo
 Creek, at the northwest corner of the concrete
 bridge in the top of the concrete guardrail base
 approx. 17 feet southwest of the centerline of the
 highway, and approx. 3 feet southeast of the northwest
 end of the guardrail base.
 Elevation = 524.65
 Bench Mark 2
 Top of Concrete ROW Marker, approx. 1.6 miles
 southeast along State Hwy. 205 and then approx.
 0.6 miles east along FM 276 to intersection of
 paved road, at fence corner at southwest quadrant
 of intersection.
 Elevation = 543.10

Pavement Sta. 7+40.29 ~
 End Conc. Alley Pmnt.
 Const. Conc. Alley Header
 & Install Temp. Alley Pmnt.

Pavement Sta. 8+39.17 ~
 End Conc. Street Pmnt.
 Const. Conc. Street Header
 & Install Barricade

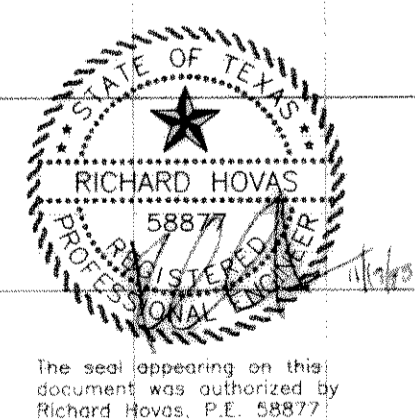
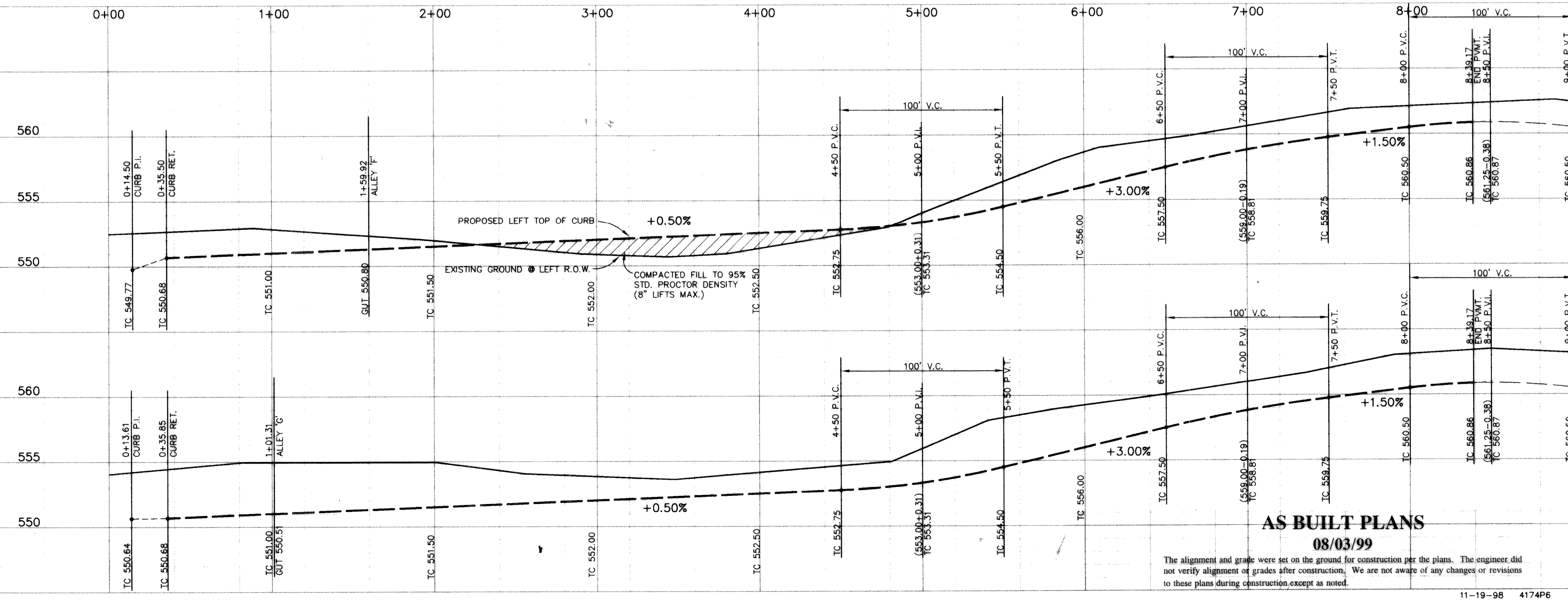
Pavement Sta. 7+99.49 ~
 End Conc. Alley Pmnt.
 Const. Conc. Alley Header
 & Install Temp. Alley Pmnt.

Refer To City Of Rockwall
 Standard Construction
 Details, Sheet 3 For
 Concrete Header Detail.



Note!!
 Construct Barrier Free Ramps At All
 Intersection As Per City Standards.

Future State Highway No. 276



PAVING PLAN					
MEADOWCREEK ESTATES I					
City Of Rockwall, Texas					
TIPTON ENGINEERING, INC.					
6330 Broadway Blvd. ~ Suite C ~ Garland, Texas 75043					
DESIGN	DRAWN	DATE	SCALE	NOTES	FILE
T.E. Inc.	T.E. Inc.	11-98	1"=40'H 1"=5'V		4174
					9

AS BUILT PLANS
 08/03/99

The alignment and grade were set on the ground for construction per the plans. The engineer did not verify alignment or grades after construction. We are not aware of any changes or revisions to these plans during construction, except as noted.