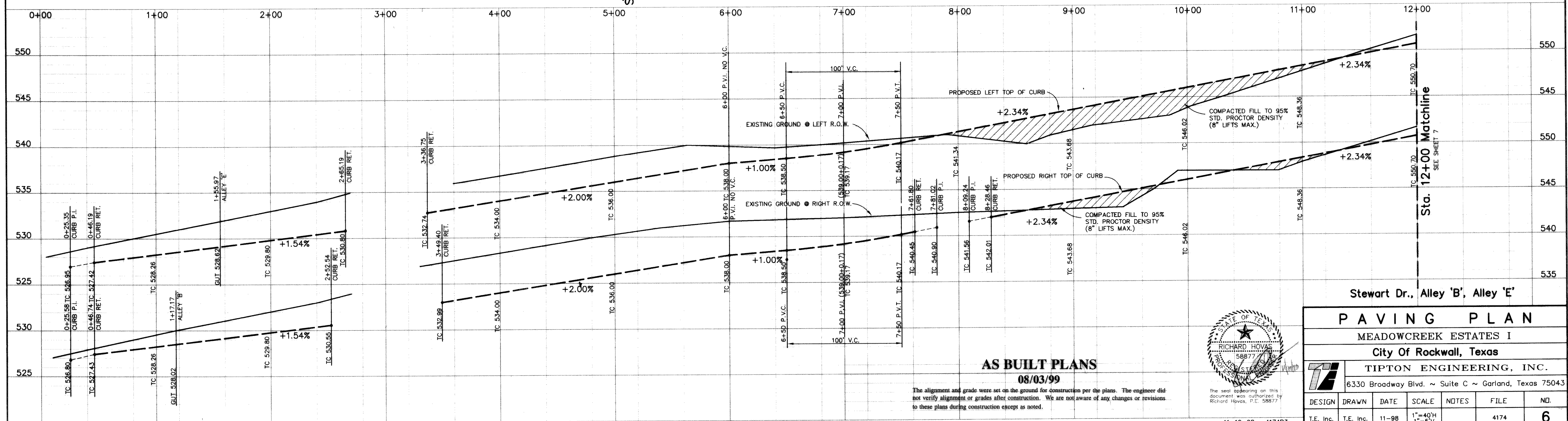
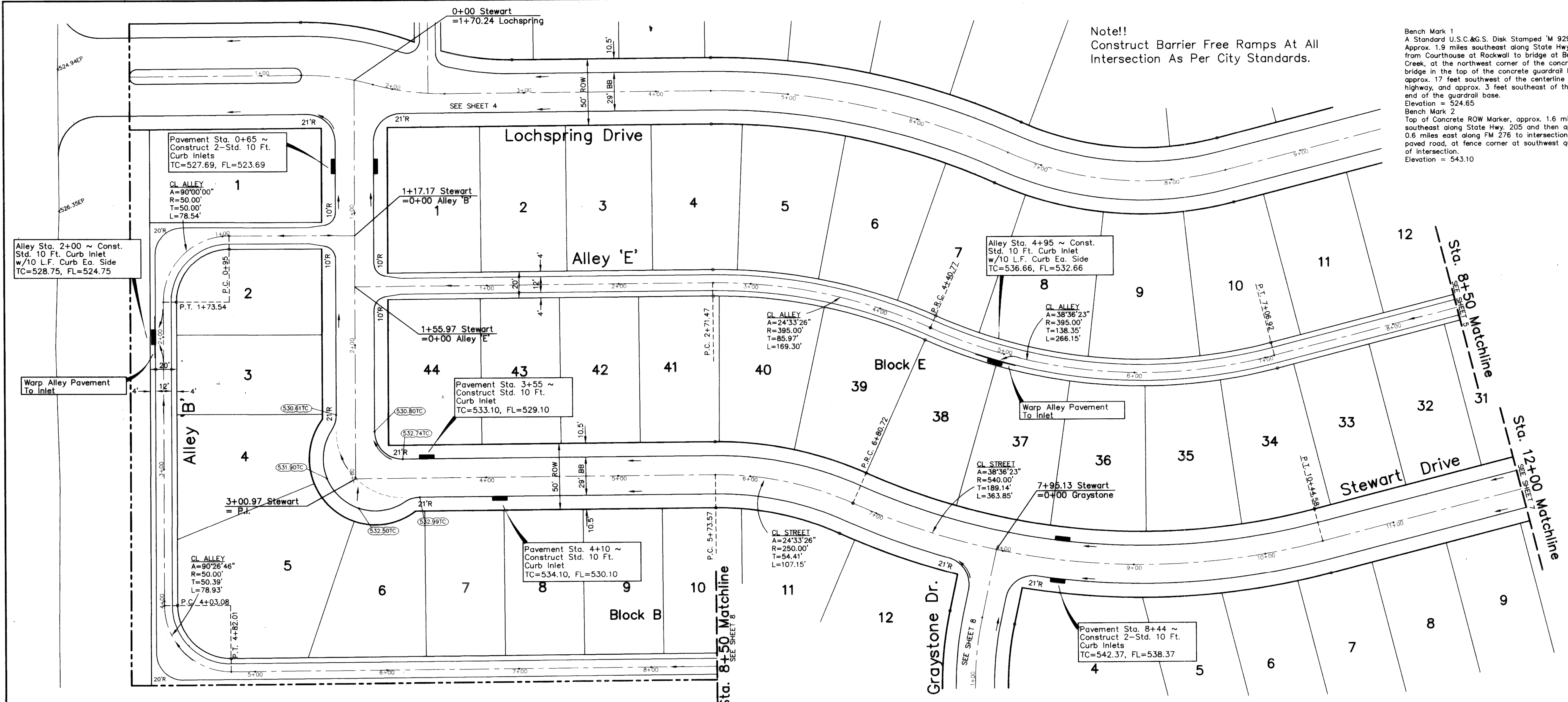
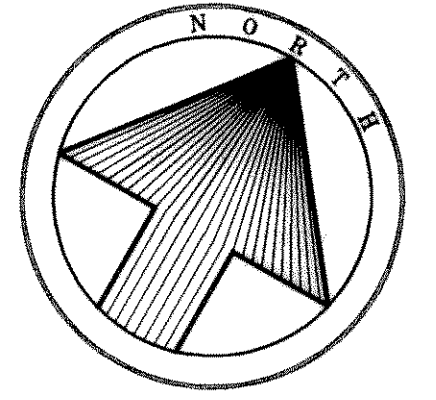


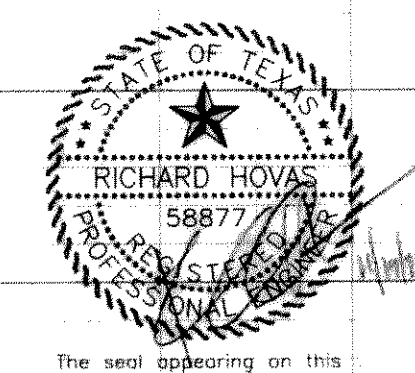
Note!
Construct Barrier Free Ramps At All
Intersection As Per City Standards.

Bench Mark 1
A Standard U.S.C. & G.S. Disk Stamped 'M 929 1946'
Approx. 1.9 miles southeast along State Hwy. 205
from Courthouse at Rockwall to bridge at Buffalo
Creek, at the northwest corner of the concrete
bridge in the top of the concrete guardrail base
approx. 17 feet southwest of the centerline of the
highway, and approx. 3 feet southeast of the northwest
end of the guardrail base.
Elevation = 524.65
Bench Mark 2
Top of Concrete ROW Marker, approx. 1.6 miles
southeast along State Hwy. 205 and then approx.
0.6 miles east along FM 276 to intersection of
paved road, at fence corner at southwest quadrant of
intersection.
Elevation = 543.10



AS BUILT PLANS
08/03/99

The alignment and grade were set on the ground for construction per the plans. The engineer did not verify alignment or grades after construction. We are not aware of any changes or revisions to these plans during construction except as noted.



The seal appearing on this document was authorized by Richard Hovak, P.E. 58877

PAVING PLAN						
MEADOWCREEK ESTATES I						
City Of Rockwall, Texas						
TIPTON ENGINEERING, INC.						
6330 Broadway Blvd. ~ Suite C ~ Garland, Texas 75043						
DESIGN	DRAWN	DATE	SCALE	NOTES	FILE	NO.
T.E. Inc.	T.E. Inc.	11-98	1"=40'H 1"=5'V		4174	6