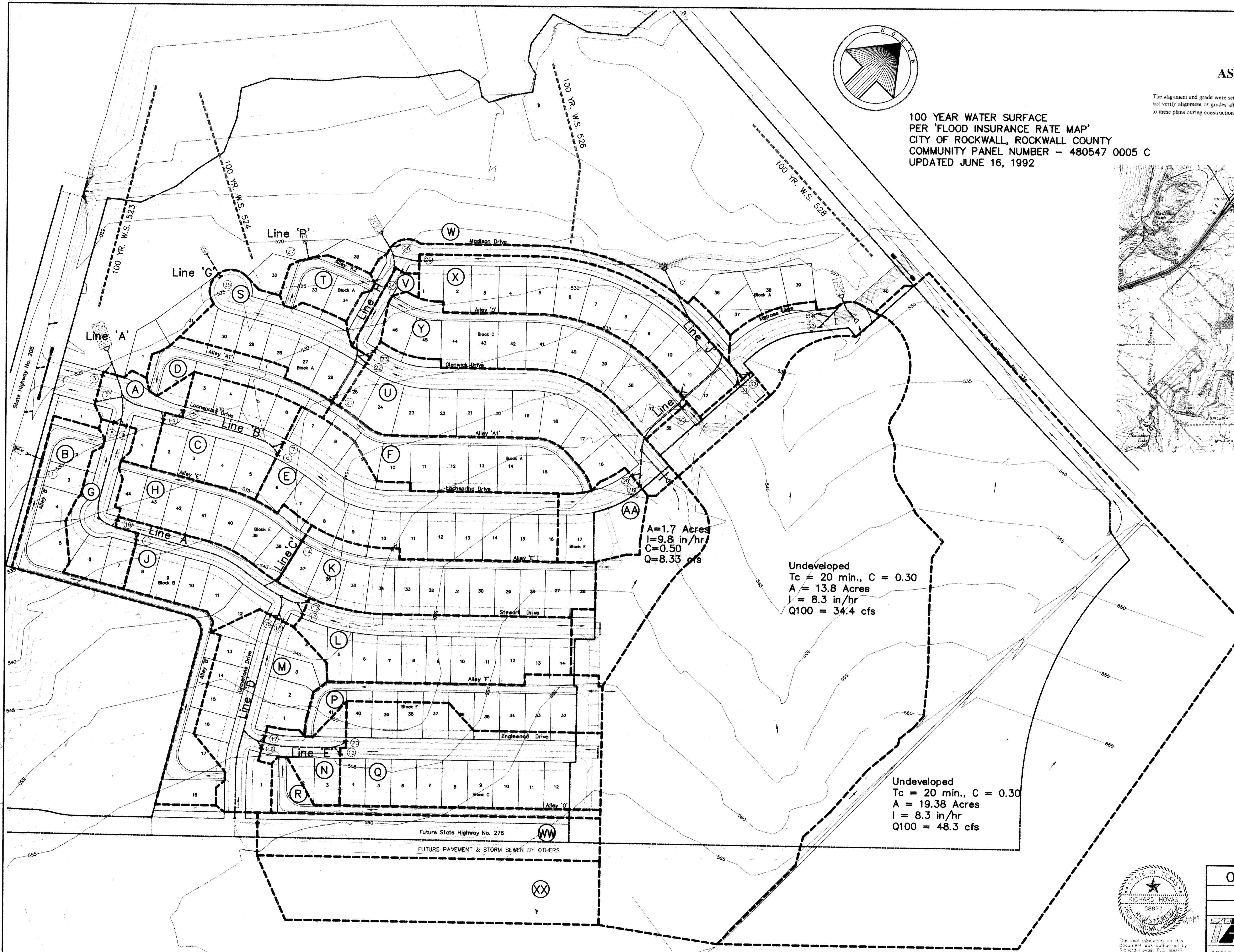
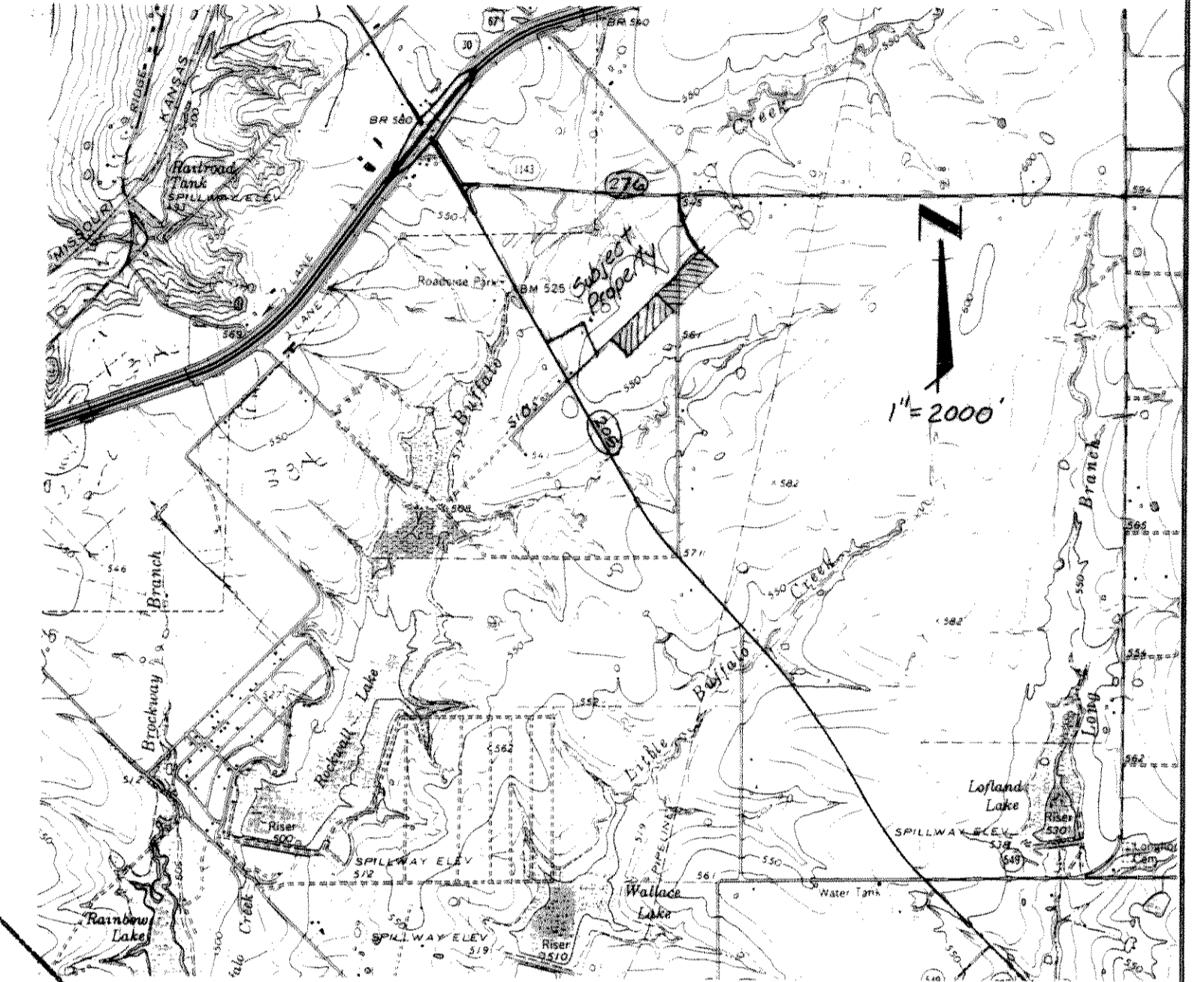
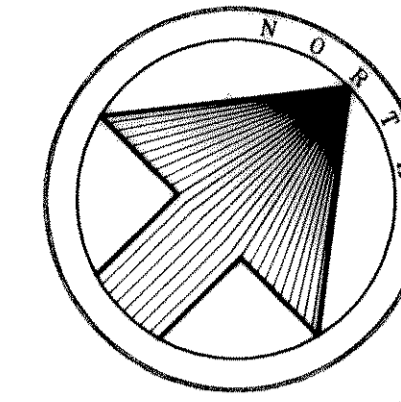


**AS BUILT PLANS**

08/03/99

The alignment and grade were set on the ground for construction per the plans. The engineer did not verify alignment or grades after construction. We are not aware of any changes or revisions to these plans during construction except as noted.

100 YEAR WATER SURFACE  
PER 'FLOOD INSURANCE RATE MAP'  
CITY OF ROCKWALL, ROCKWALL COUNTY  
COMMUNITY PANEL NUMBER - 480547 0005 C  
UPDATED JUNE 16, 1992

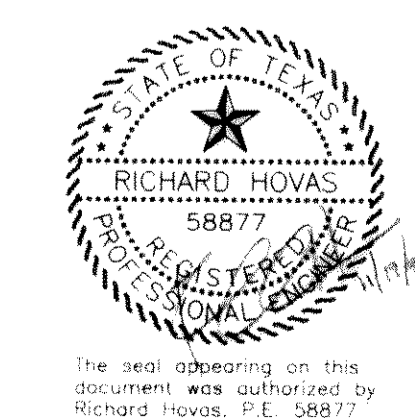


A=1.7 Acres  
I=9.8 in/hr  
C=0.50  
Q=8.33 cfs

Undeveloped  
Tc = 20 min., C = 0.30  
A = 13.8 Acres  
I = 8.3 in/hr  
Q100 = 34.4 cfs

Undeveloped  
Tc = 20 min., C = 0.30  
A = 19.38 Acres  
I = 8.3 in/hr  
Q100 = 48.3 cfs

Bench Mark 1  
A Standard U.S.C. & G.S. Disk Stamped 'M 929 1946'  
Approx. 1.9 miles southeast along State Hwy. 205  
from Courthouse at Rockwall to bridge at Buffalo  
Creek, at the northwest corner of the concrete  
bridge in the top of the concrete guardrail base  
approx. 17 feet southwest of the centerline of the  
highway, and approx. 3 feet southeast of the northeast  
end of the guardrail base.  
Elevation = 524.65  
Bench Mark 2  
Top of Concrete ROW Marker, approx. 1.6 miles  
southeast along State Hwy. 205 and then approx.  
0.6 miles east along FM 276 to intersection of  
paved road, at fence corner at southwest quadrant  
of intersection.  
Elevation = 543.10



OFFSITE DRAINAGE AREA MAP						
MEADOWCREEK ESTATES I						
City Of Rockwall, Texas						
TIPTON ENGINEERING, INC.						
6330 Broadway Blvd. ~ Suite C ~ Garland, Texas 75043						
DESIGN	DRAWN	DATE	SCALE	NOTES	FILE	NO.
T.E. Inc.	T.E. Inc.	11-98	1"=100'		4174	15B