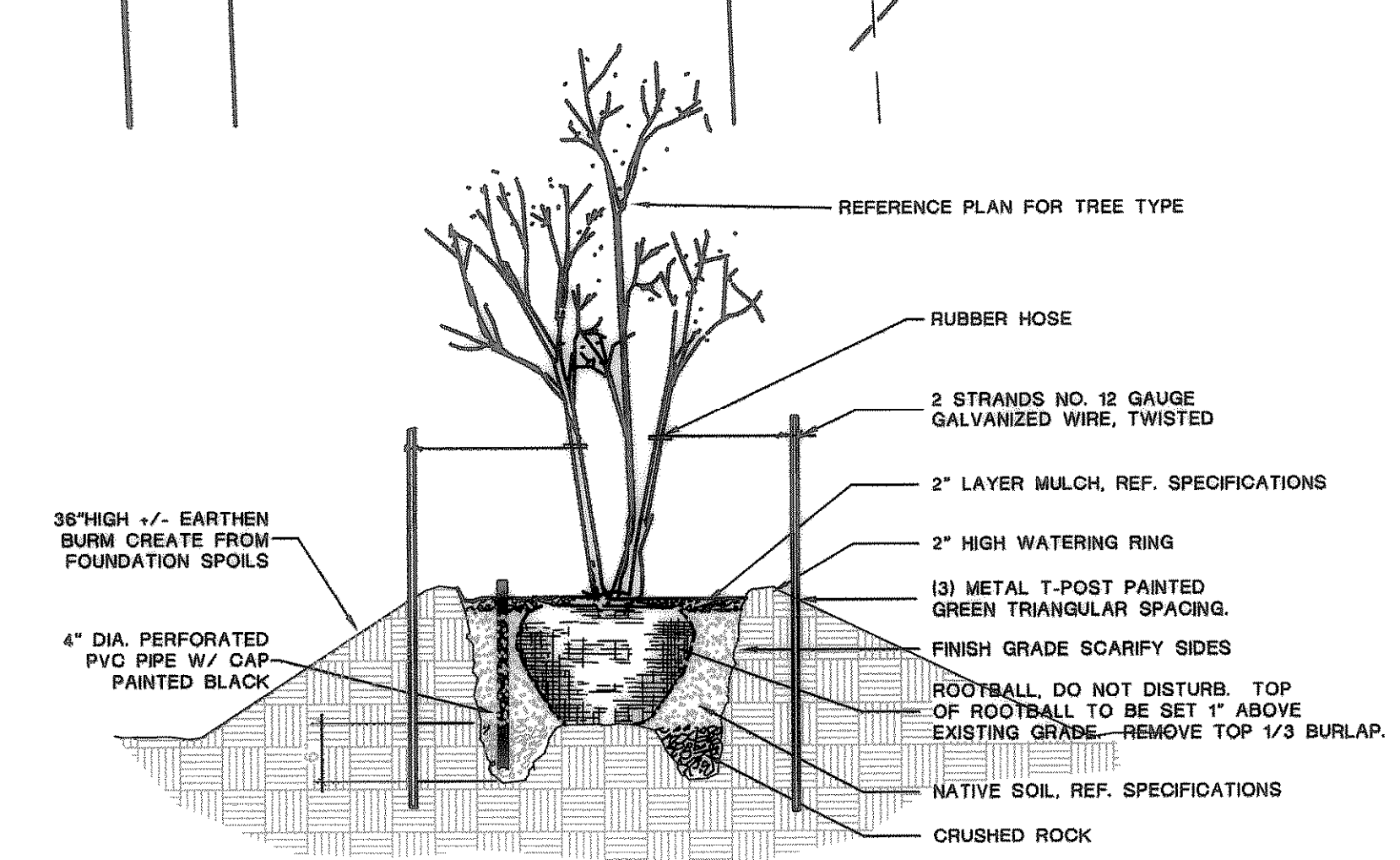
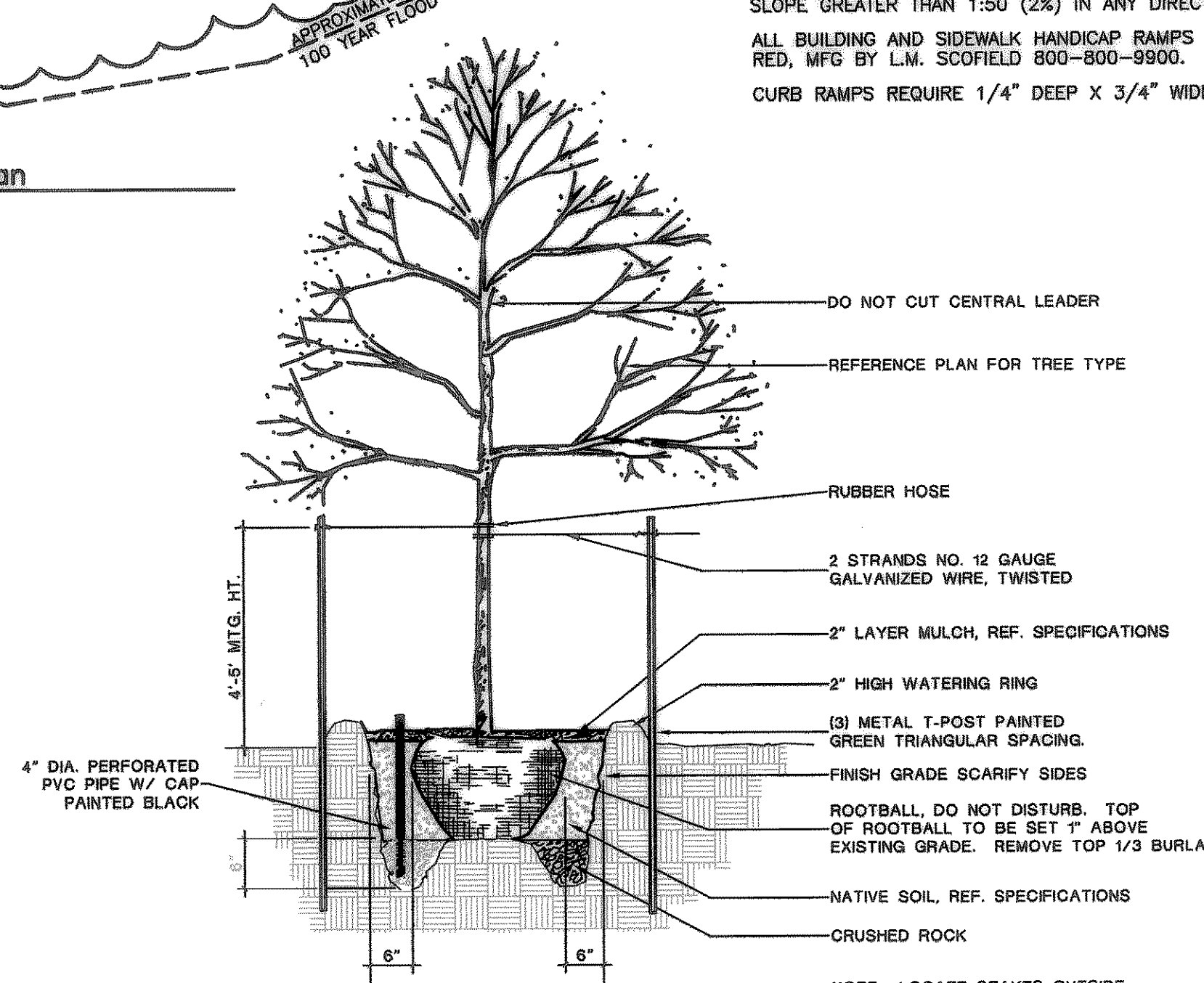


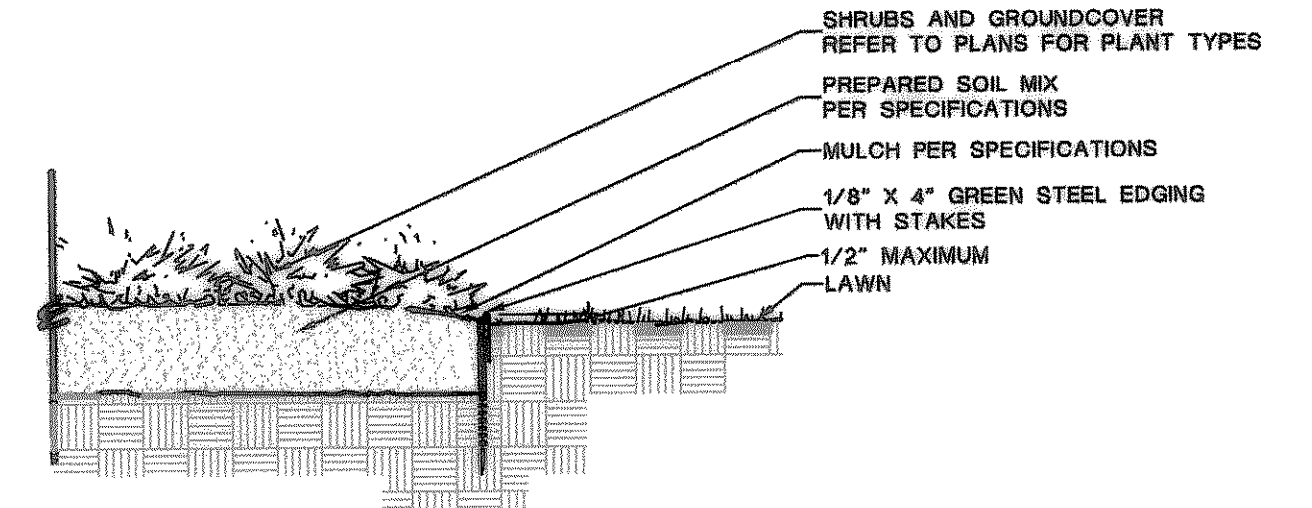
1 landscape plan
1" = 20'



2 small ornamental tree in burm
nts

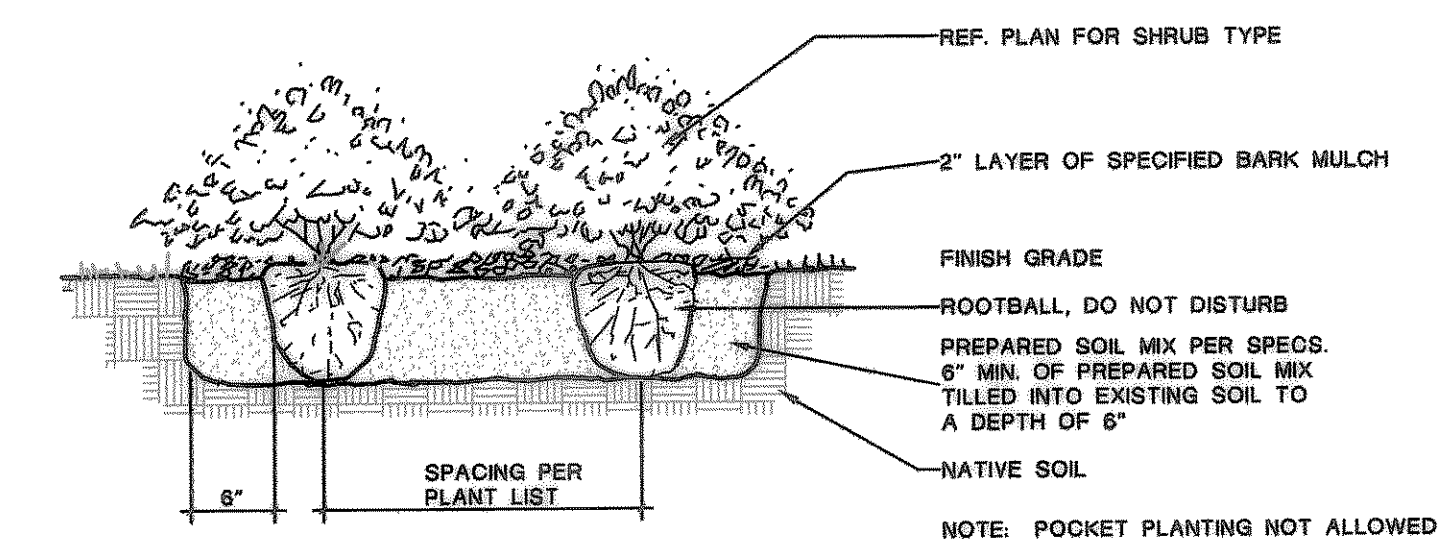


3 tree planting detail
nts



NOTE: NO STEEL EDGING TO BE INSTALLED ALONG SIDEWALKS

4 steel edging detail
nts



5 shrub/groundcover detail
nts

SITE NOTES:
 SIDEWALKS AROUND BUILDING FROM EXIT DOORS MUST NOT EXCEED A SLOPE GREATER THAN 1:50 (2%) IN ANY DIRECTION.
 ALL BUILDING AND SIDEWALK HANDICAP RAMPS MUST BE COLOR-CONDITIONED CONCRETE. USE QUARRY RED, MFG BY L.M. SCOFIELD 800-800-9900. A SPEC SHEET IS AVAILABLE AT CITY OFFICES.
 CURB RAMPS REQUIRE 1/4" DEEP X 3/4" WIDE GROOVES 2" APART

PLANT LEGEND:

PLANT #	PLANT NAME	SIZE	HEIGHT	SPREAD	QTY.
RO	RED OAK - QUERCUS SHUMARDII	3" CAL	10'-12"	4.5'	14
RB	RED BUD - CERCIS CANADENSIS	3" CAL	10'-12"	4.5'	6
DBH	HOLLY, DWARF BURFORD - ILEX CORNUTA 'BURFORDI NANA'	5 GAL	24"	18"	11
IH	HAWTHORN, INDIAN - RHAPHIOLEPSIS INDICA	5 GAL	24"	18"	7
CM	GRAPE MYRTLE - LAGERSTROEMIA INDICA	10 GAL	8'	4.5'	9
PH	RED TIP PHOTINIA - FRASIERI PHOTINIA	5 GAL	24"	18"	4

- NOTES:**
- 1) ALL FINISH GRADES TO BE BROUGHT TO TOP OF CURB BY GENERAL CONTRACTOR TO +/- 1/10'
 - 2) LANDSCAPE CONTRACTOR SHALL BE RESPONSIBLE FOR MAKING HIMSELF FAMILIAR WITH ALL UNDERGROUND UTILITIES, STRUCTURES AND LINE RUNS.
 - 3) REFER TO PLANTING PLAN FOR PLANTING LOCATIONS AND PLANT MATERIALS LEGEND FOR SPECIFICATIONS.
 - 4) LANDSCAPE CONTRACTOR SHALL BE RESPONSIBLE FOR ANY COORDINATION WITH SUBCONTRACTORS AS REQUIRED TO ACCOMPLISH ALL PLANTING OPERATIONS.
 - 5) LANDSCAPE CONTRACTOR IS RESPONSIBLE FOR VERIFYING ALL QUANTITIES PER DRAWINGS AND SPECIFICATIONS PROVIDED ON THESE DRAWINGS.
 - 6) LANDSCAPE CONTRACTOR SHALL HAUL OFF AND REMOVE ALL OF HIS OWN DEBRIS FROM SITE.
 - 7) ALL LANDSCAPE IS TO BE IRRIGATED BY AUTOMATIC UNDERGROUND SPRINKLER SYSTEM, CONTROLLED BY ELECTRONIC IRRIGATION CONTROLLER.
 - 8) BED PREPARATION SHALL CONSIST OF INCORPORATING ONE 4 CUBIC FOOT BALE OF SPAGNUM PEAT MOSS AND ONE 3 CUBIC FOOT BAG OF LANDSCAPERS MIX PER 75 SQ. FT. INTO THE TOP SIX INCHES OF EXISTING SOIL.
 - 9) ALL PLANT MATERIAL SHALL MEET AMERICAN NURSERY STANDARDS FOR HEIGHT AND WIDTH IN EACH CONTAINER SIZE. WITH THE EXCEPTION OF GROUND COVER BEDS, ALL PLANT MATERIAL SHALL BE MULCHED WITH 2" CEDAR MULCH (MINIMUM).

PROJECT INFORMATION

PROJECT: OIL CHANGE FACILITY
 JOSEPH CADLE SURVEY, ABSTRACT NO 65 & WILLIAM BARNES SURVEY, ABSTRACT NO 25
 STEGER TOWNE CROSSING, PHASE II

OWNER: THE CAMBRIDGE COMPANIES, INC.

APPLICANT: MARLYN ROBERTS
 972-771-5342

LOCATION: HIGHWAY 205 AND RALPH HALL PARKWAY
 ROCKWALL, TEXAS

ARCHITECT: MATTHEW KING AIA
 ROCKWALL, TX. 75087
 PH: 972-772-7995

DATE: APRIL 15, 2005
 RESUBMIT: MAY 4, 2005
 SITE PLAN ISSUE: MAY 20, 2005
 RESUBMIT: JUNE 8, 2005
 PERMIT ISSUE: JULY 28, 2005

LANDSCAPE REQUIREMENTS:

TOTAL SITE: APPROXIMATELY 40,000 SQ. FT.
 TOTAL BUILDING & IMPERVIOUS SURFACES: 15,153 SQ.FT.
 TOTAL LANDSCAPE REQUIRED: 6,000 SQ.FT. (15% TOTAL DEVELOPED LOT AREA)
 TOTAL LANDSCAPE PROVIDED: 12,893 SQ. FT.

STREET TREES: 250/50 = 5 TREES REQ'D
 STREET TREES PROVIDED: 5 TREES

8,828 SQ. FT. LANDSCAPING LOCATED BETWEEN FRONT/SIDE OF BUILDING & FRONT/SIDE PROPERTY LINE

LANDSCAPE PLAN L-1