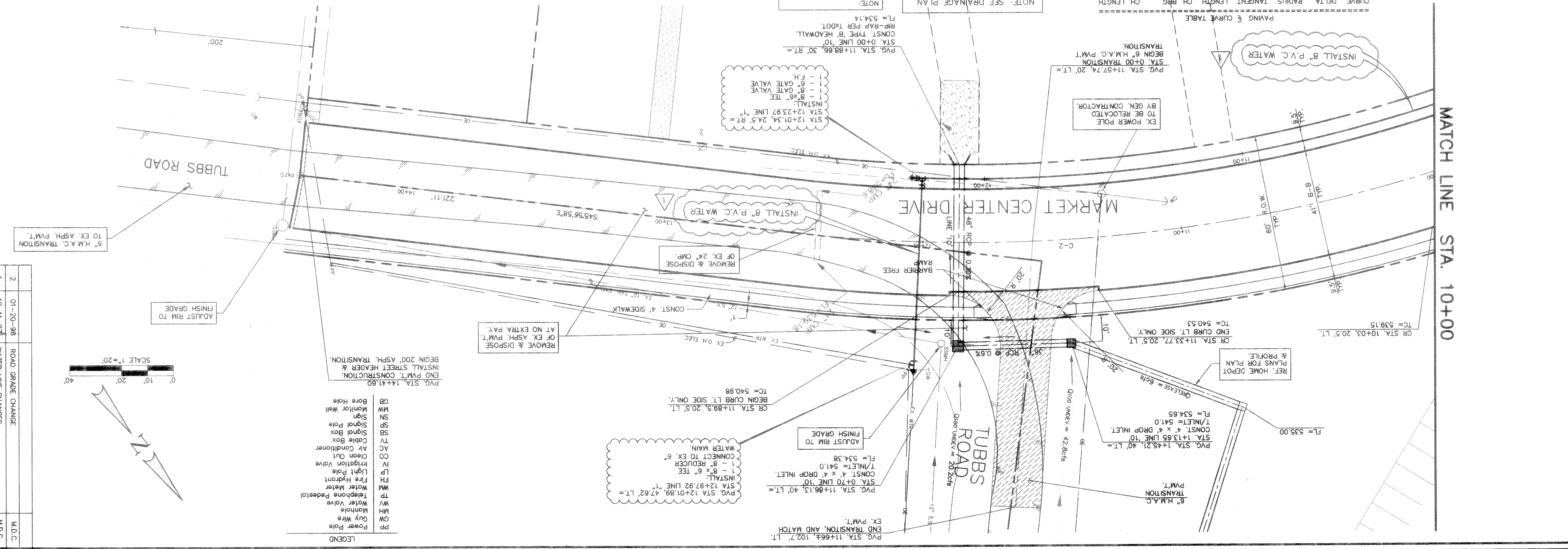
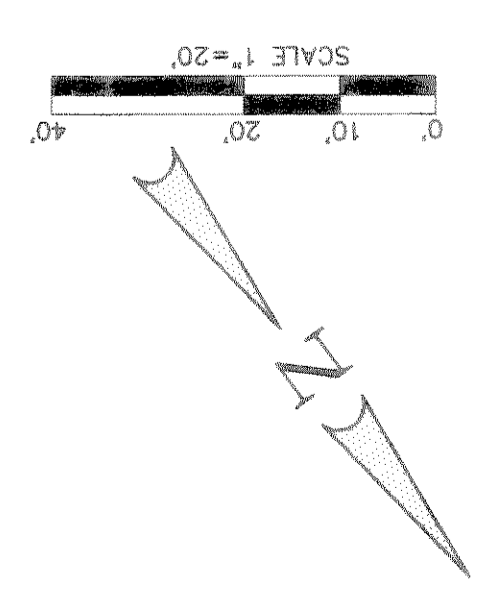


BENCHMARK
 City of Rockwall GPS Monument #7 located east of
 MMS Road along the southern side of INTERSTATE
 HIGHWAY NO. 30 (Elevation = 566.25)



LEGEND	SYMBOL	DESCRIPTION
GP	Power Pole	Power Pole
GW	Guy Wire	Guy Wire
MH	Manhole	Manhole
WV	Water Valve	Water Valve
TP	Telephone Pedestal	Telephone Pedestal
WM	Water Meter	Water Meter
FH	Fire Hydrant	Fire Hydrant
LP	Light Pole	Light Pole
IV	Irrigation Valve	Irrigation Valve
CO	Clean Out	Clean Out
AC	Air Conditioner	Air Conditioner
TV	Cable Box	Cable Box
SB	Signal Box	Signal Box
SP	Sign Pole	Sign Pole
SN	Sign	Sign
MW	Monitor Well	Monitor Well
GB	Bore Hole	Bore Hole

REVISION	No.	DATE	DESCRIPTION
	1	12-11-97	WATER LINE CHANGES
	2	01-20-98	ROAD GRADE CHANGE



Scale: 1"=20' Date: 9/10/97
 Designed By: M.D.C.
 Drawn By: R.D.L.
 Checked By: M.D.C.
 File: 07939PFS.DWG
 Project No.: 07939(0160)

PAVING PLAN & PROFILE & WATER PLAN
 MARKET CENTER DRIVE

E.P. GAINES CIVIL SERVICE, ASSOCIATES, INC.
 2800 FOREST LANE
 DALLAS, TEXAS 75234

Professional Engineer Seal for Michael D. Clark, State of Texas, No. 63290. Includes company logo for Winkelman & Associates, Inc. and contact information: 12000 Wilshire Blvd, Suite 200, Dallas, Texas 75233, (214) 463-7098 FAX.