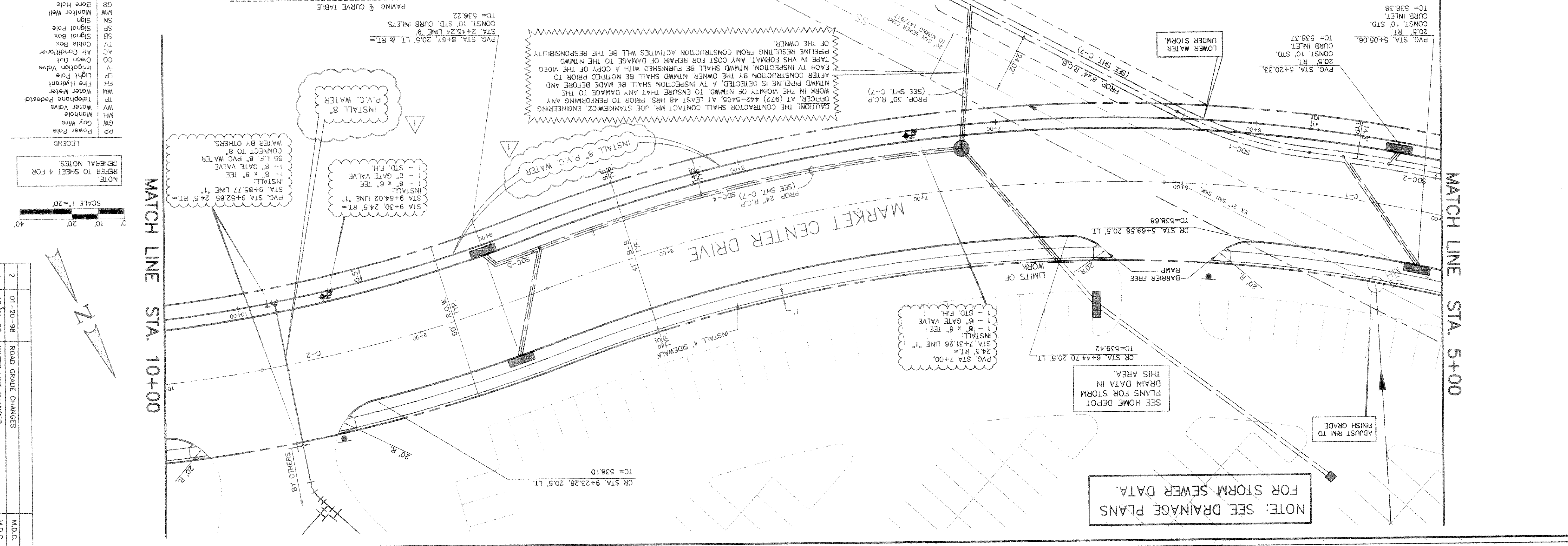


PAVING & CURVE TABLE

CH. LENGTH	CH. BRG.	RADIUS	TANGENT LENGTH	CH. BRG.	CH. LENGTH
640.74	55.02°45'E	557.02	46.5	55.02°45'E	640.74
378.90	401.80	585.08	03.5	585.08°03'E	378.90
600.00	208.76	378.90	600.00	208.76	600.00
382.22	09.600	00.00	382.22	09.600	00.00
538.22					

BENCHMARK
 HIGHWAY NO. 30 (Elevation = 566.25)
 MMS ROAD along the easterly side of INTERSTATE



- LEGEND
- PP Power Pole
 - GW Guy Wire
 - MM Manhole
 - TV Telephone Pedestal
 - WM Water Meter
 - FM Fire Hydrant
 - IP Ingress Valve
 - AC Air Conditioner
 - TV Cable Box
 - SB Signal Pole
 - SN Sign
 - MW Monitor Well
 - GB Bore Hole
- NOTE:
 REFER TO SHEET 4 FOR GENERAL NOTES.
- SCALE 1"=20'

REVISION

No.	DATE	REVISION
1	12-11-97	WATER LINE CHANGES
2	01-20-98	ROAD GRADE CHANGES

APPROV. M.D.C.
 M.D.C.

E.P. GAINES CHISUM SURVEY, ASST. No. 84
 CITY OF ROCKWALL
 ROCKWALL COUNTY, TEXAS
 HOME DEPOT, U.S.A., INC.
 2800 FOREST LANE
 DALLAS, TEXAS 75234

Winkelman & Associates, Inc.
 CONSULTING CIVIL ENGINEERS & SURVEYORS
 7300 North Central Expressway, Suite 200
 Dallas, Texas 75230
 (972) 961-3999 FAX

Scale: 1"=20' Date: 9/09/97
 Designed By: M.D.C.
 Drawn By: R.D.L.
 Checked By: M.D.C.
 File: 07939PSP.DWG
 Project No.: 07939.01(201)

PAVING PLAN & PROFILE & WATER PLAN
 MARKET CENTER DRIVE

Professional Engineer Seal: MICHAEL D. WINKELMANN, No. 63230, State of Texas, Exp. 12/31/00

Winkelman & Associates, Inc.
 CONSULTING CIVIL ENGINEERS & SURVEYORS
 7300 North Central Expressway, Suite 200
 Dallas, Texas 75230
 (972) 961-3999 FAX