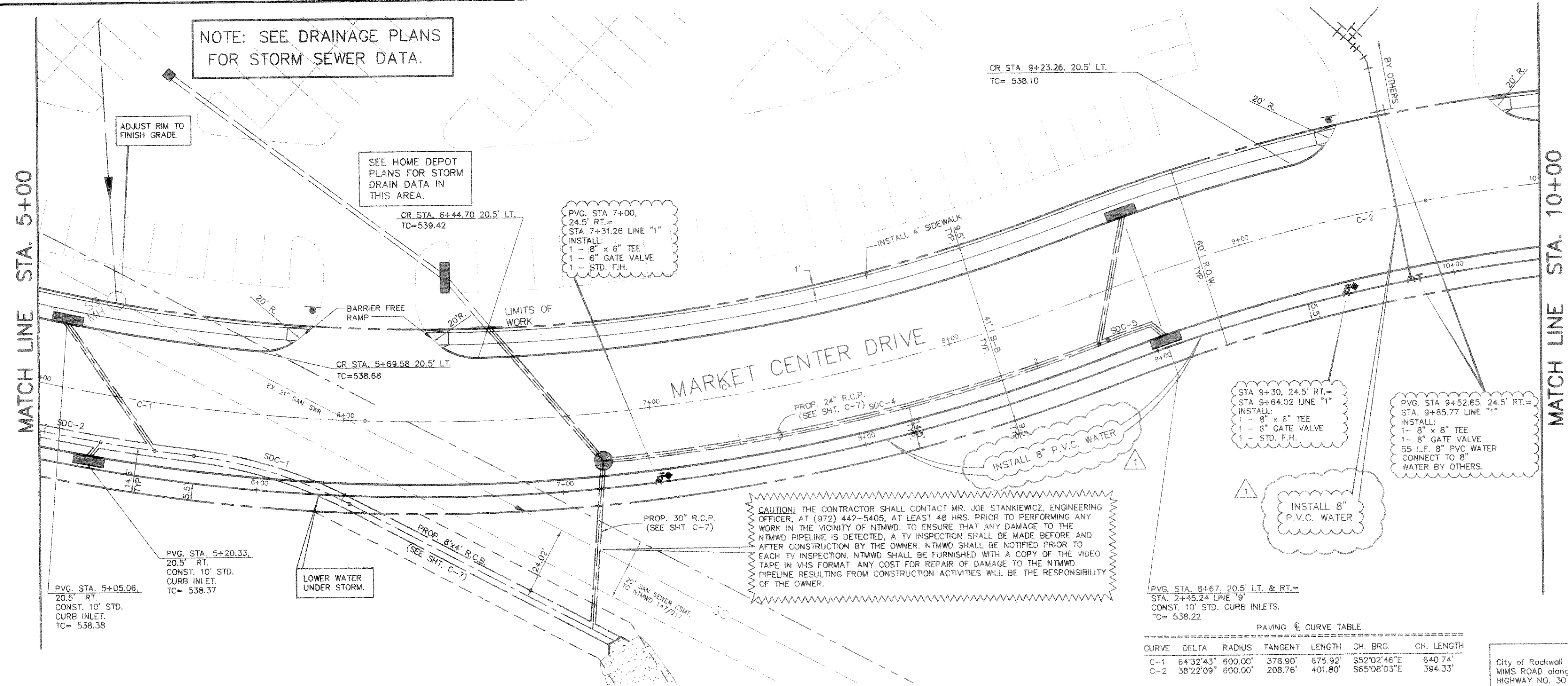


MATCH LINE STA. 5+00

MATCH LINE STA. 10+00



NOTE: SEE DRAINAGE PLANS FOR STORM SEWER DATA.

SEE HOME DEPOT PLANS FOR STORM DRAIN DATA IN THIS AREA.

P.V.G. STA. 7+00, 24.5' RT. STA. 7+31.26 LINE "1" INSTALL: 1 - 8" x 6" TEE 1 - 6" GATE VALVE 1 - STD. F.H.

STA. 9+30, 24.5' RT. STA. 9+64.02 LINE "1" INSTALL: 1 - 8" x 6" TEE 1 - 6" GATE VALVE 1 - STD. F.H.

P.V.G. STA. 9+52.65, 24.5' RT. STA. 9+85.77 LINE "1" INSTALL: 1 - 8" x 6" TEE 1 - 6" GATE VALVE 55 L.F. 8" PVC WATER CONNECT TO 8" WATER BY OTHERS.

CAUTION! THE CONTRACTOR SHALL CONTACT MR. JOE STANKIEWICZ, ENGINEERING OFFICER, AT (972) 442-5405, AT LEAST 48 HRS. PRIOR TO PERFORMING ANY WORK IN THE VICINITY OF NTMWD, TO ENSURE THAT ANY DAMAGE TO THE NTMWD PIPELINE IS DETECTED. A TV INSPECTION SHALL BE MADE BEFORE AND AFTER CONSTRUCTION BY THE OWNER. NTMWD SHALL BE NOTIFIED PRIOR TO EACH TV INSPECTION. NTMWD SHALL BE FURNISHED WITH A COPY OF THE VIDEO TAPE IN VHS FORMAT. ANY COST FOR REPAIR OF DAMAGE TO THE NTMWD PIPELINE RESULTING FROM CONSTRUCTION ACTIVITIES WILL BE THE RESPONSIBILITY OF THE OWNER.

P.V.G. STA. 8+67, 20.5' LT. & RT. STA. 2+45.24 LINE "9" CONST. 10' STD. CURB INLETS. TC= 538.22

PAVING & CURVE TABLE

CURVE	DELTA	RADIUS	TANGENT LENGTH	CH. BRG.	CH. LENGTH
C-1	64°32'43"	600.00'	378.90'	S82°02'46"E	640.74'
C-2	38°22'09"	600.00'	208.76'	S65°08'03"E	394.33'

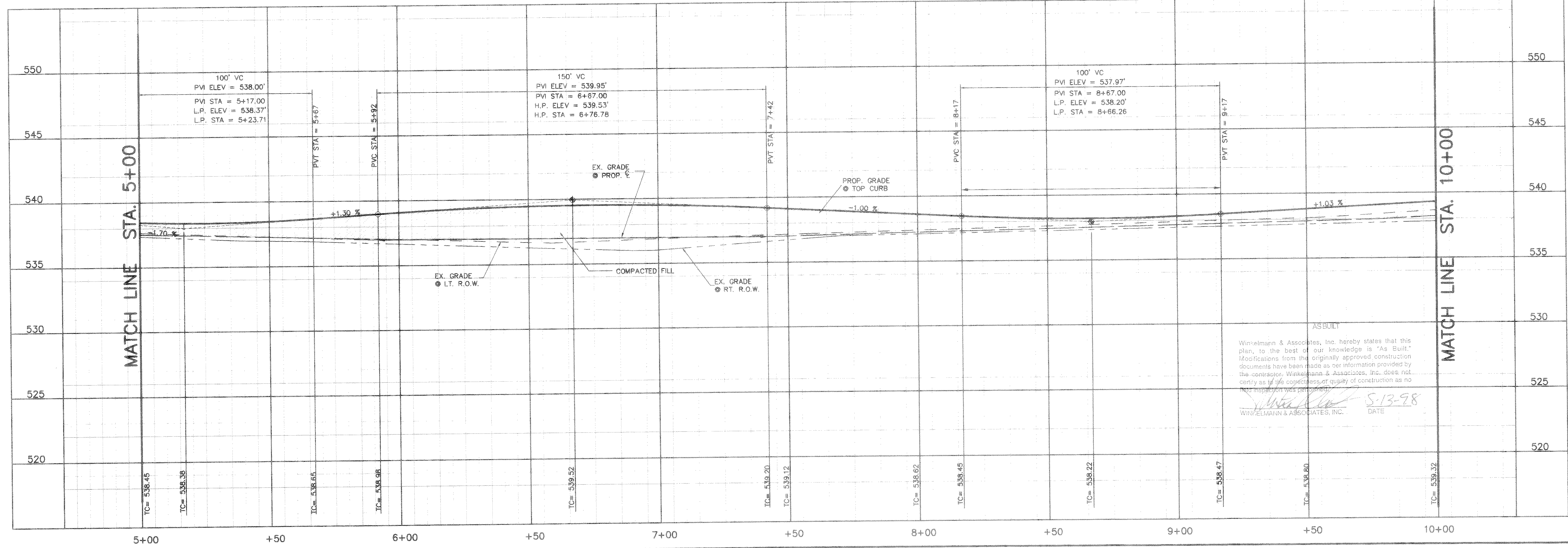


NOTE: REFER TO SHEET 4 FOR GENERAL NOTES.

LEGEND

PP	Power Pole
GW	Guy Wire
MH	Manhole
WV	Water Valve
TP	Telephone Pedestal
WM	Water Meter
FH	Fire Hydrant
LP	Light Pole
LV	Irrigation Valve
CO	Clean Out
AC	Air Conditioner
TV	Cable Box
SB	Signal Box
SP	Signal Pole
SN	Sign
MW	Monitor Well
GB	Bore Hole

BENCHMARK City of Rockwall GPS Monument # 7 located east of MMS ROAD along the southerly side of INTERSTATE HIGHWAY NO. 30 (Elevation = 566.25)



AS BUILT

Winkelmann & Associates, Inc. hereby states that this plan, to the best of our knowledge is "As Built." Modifications from the originally approved construction documents have been made as per information provided by the operator. Winkelmann & Associates, Inc. does not carry on life or property of quality of construction as no field inspection was performed.

[Signature] 5-13-98
WINKELMANN & ASSOCIATES, INC. DATE

No.	DATE	REVISION	APPROV.
2	01-20-98	ROAD GRADE CHANGES	M.D.C.
1	12-11-97	WATER LINE CHANGES	M.D.C.

Winkelmann & Associates, Inc.
CONSULTING CIVIL ENGINEERS & SURVEYORS
2800 FOREST LANE
DALLAS, TEXAS 75236
(972) 480-7000 FAX
(972) 480-7099 FAX

Professional Engineer Seal: MICHAEL S. CLARK, No. 63280, State of Texas, Registered Professional Engineer.

E.P. GAINES CHISUM SURVEY, ABST. No. 84
CITY OF ROCKWALL
ROCKWALL COUNTY, TEXAS
HOME DEPOT, U.S.A., INC.
2800 FOREST LANE
DALLAS, TEXAS 75234

PAVING PLAN & PROFILE & WATER PLAN
MARKET CENTER DRIVE

Scale: 1" = 20'
Date: 9/09/97
Designed By: M.D.C.
Drawn By: R.D.L.
Checked By: M.D.C.
File: 07939PPS.DWG
Project No.: 07939.01[20]

