

SCALE: 1"=60'
 BASIS OF BEARINGS
 STATE PLANE COORDINATE SYSTEM
 NORTH CENTRAL ZONE
 N 53°02'31" E
 BETWEEN CITY OF ROCKWALL MONUMENTS
 R002 & M929 (NAD 83)

- LEGEND**
- 1/2" I.R.F.C. 1/2" IRON ROD FOUND WITH PLASTIC CAP STAMPED "WEIR & ASSOC"
 - 5/8" I.R.S. 5/8" IRON ROD SET WITH PLASTIC CAP STAMPED "R.P.L.S. 5199"
 - C.M.F. CONCRETE MONUMENT FOUND (TXDOT)
 - D.E. DRAINAGE EASEMENT
 - D.R.R.C.T. DEED RECORDS, ROCKWALL COUNTY, TEXAS
 - F.A. & U.E. FIRELANE, ACCESS & UTILITY EASEMENT
 - F.M.S. FLOODPLAIN MONUMENT SET
 - M.F.F.E. MINIMUM FINISHED FLOOR ELEVATION
 - P.O.B. POINT OF BEGINNING
 - R.O.W. RIGHT-OF-WAY
 - S.S.E. SANITARY SEWER EASEMENT
 - W.E. WATER EASEMENT

60' STREET
 (CABINET F, SLIDE 379, P.R.R.C.T.)

LOT 1, BLOCK 2
 ROCKWALL RECREATIONAL ADDITION
 (CABINET F, SLIDE 379, P.R.R.C.T.)

X=7,021,024.26
 Y=2,601,767.51

7.5' T.U. ELECTRIC EASEMENT
 (VOLUME 574, PAGE 31, D.R.R.C.T.)

30' DRAINAGE EASEMENT
 (VOLUME 5214, PAGE 313, D.R.R.C.T.)
 (VOLUME 5214, PAGE 319, D.R.R.C.T.)

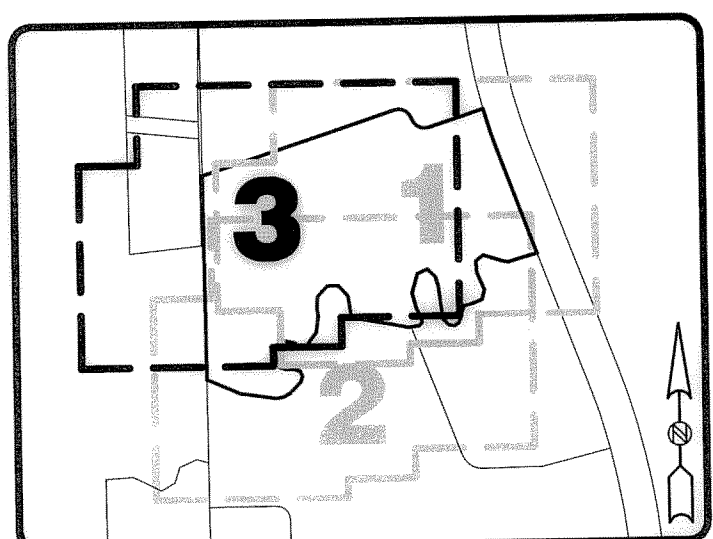
REMAINDER OF 123.4 ACRES
 THE CAMBRIDGE COMPANIES, INC., TRUSTEE
 (VOLUME 99, PAGE 1022, D.R.R.C.T.)

TEMPORARY FIRELANE EASEMENT
 (VOLUME 5596, PAGE 26, D.R.R.C.T.)
 24' TEMPORARY FIRELANE EASEMENT
 (VOLUME 5709, PAGE 73, D.R.R.C.T.)

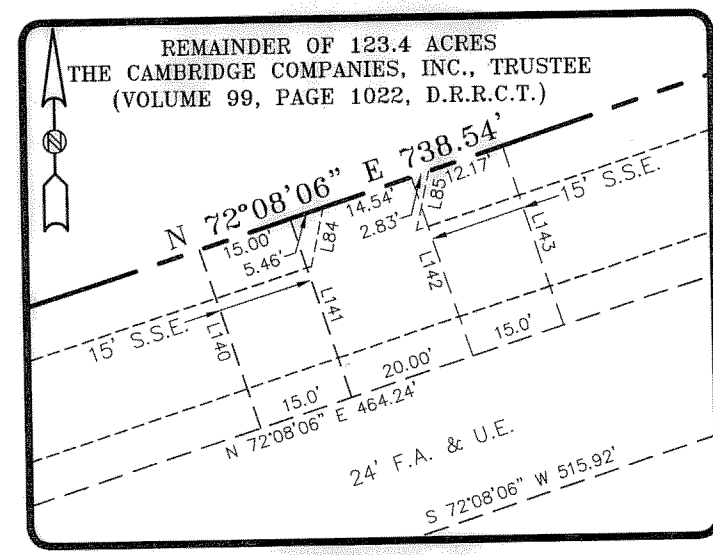
12' FIRELANE, ACCESS & UTILITY EASEMENT
 (VOLUME 5707, PAGE 25)
 MUTUAL ACCESS AND FIRELANE EASEMENT
 (VOLUME 5596, PAGE 1, D.R.R.C.T.)

LOT 1, BLOCK A
 791,266 SQUARE FEET
 18.1650 ACRES
 M.F.F.E. = 547.00

18.1650 ACRES
 WESTERN RIM INVESTORS 2008-2, L.P.
 (VOLUME 5595, PAGE 274, D.R.R.C.T.)



KEY MAP



DETAIL A
 SCALE: 1"=2000'

22.303 ACRES
 THOMAS REAL ESTATE, L.P.
 (VOLUME 1507, PAGE 203, D.R.R.C.T.)

SHEET 3 OF 6
 SHEET 2 OF 6

SHEET 3 OF 6 | SHEET 1 OF 6
 SHEET 2 OF 6

FINAL PLAT
MANSIONS SENIOR ADDITION
 (18.1650 ACRES)

out of
 J.M. ALLEN SURVEY, ABSTRACT No. 2
 CITY OF ROCKWALL, ROCKWALL COUNTY, TEXAS

ENGINEER:
 RKM CONSULTING ENGINEERS, INC.
 7616 LBJ Freeway Suite 530
 Dallas, Texas 75251
 (214) 432-8070

OWNER:
 WESTERN RIM INVESTORS
 2008-2, L.P.
 601 Canyon Drive Suite 101
 Coppell, Texas 75019

PROJECT INFORMATION
 Date of Survey: 01/10/2008
 Date of Drawing: 03/02/2009
 Job Number: 0714829
 Drawn By: M.M.D.
 File: Final Plat Seniors.Dwg
SHEET 3 OF 6

SCI
 Survey Consultants, Inc.
 811 E. Plano Parkway Suite 117
 Plano, Texas 75074
 (972) 424-7002 Voice
 (972) 633-1702 Fax
 WWW.SurveyConsultantsInc.Com

G-391