

0 60 120

SCALE: 1"=60'

BASIS OF BEARINGS
STATE PLANE COORDINATE SYSTEM
NORTH CENTRAL ZONE
N 53°02'31" E
BETWEEN CITY OF ROCKWALL MONUMENTS
R002 & M929 (NAD 83)

LEGEND

- 1/2" I.R.F.C. 1/2" IRON ROD FOUND WITH PLASTIC CAP STAMPED "WEIR & ASSOC"
- 5/8" I.R.S. 5/8" IRON ROD SET WITH PLASTIC CAP STAMPED "R.P.L.S. 5199"
- C.M.F. CONCRETE MONUMENT FOUND (TXDOT)
- D.E. DRAINAGE EASEMENT
- D.R.R.C.T. DEED RECORDS, ROCKWALL COUNTY, TEXAS
- F.A. & U.E. FIRELANE, ACCESS & UTILITY EASEMENT
- F.M.S. FLOODPLAIN MONUMENT SET
- M.F.F.E. MINIMUM FINISHED FLOOR ELEVATION
- P.O.B. POINT OF BEGINNING
- R.O.W. RIGHT-OF-WAY
- S.S.E. SANITARY SEWER EASEMENT
- W.E. WATER EASEMENT

30' DRAINAGE EASEMENT
(VOLUME 5214, PAGE 313, D.R.R.C.T.)
(VOLUME 5214, PAGE 319, D.R.R.C.T.)

SHEET 3 OF 6
SHEET 2 OF 6

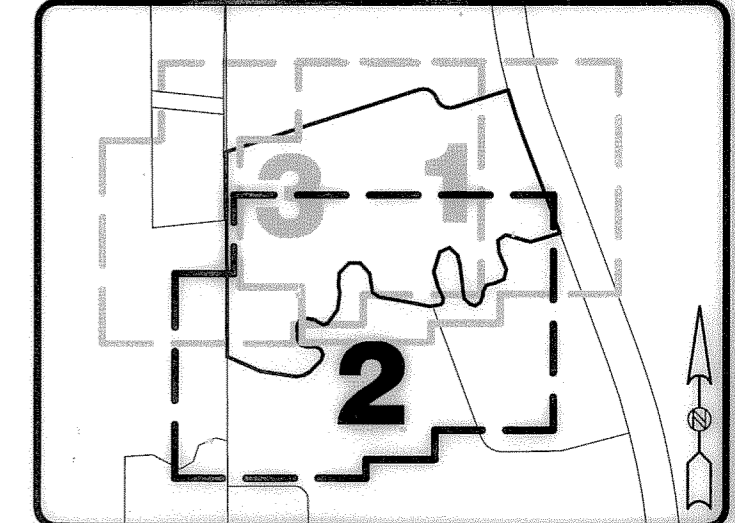
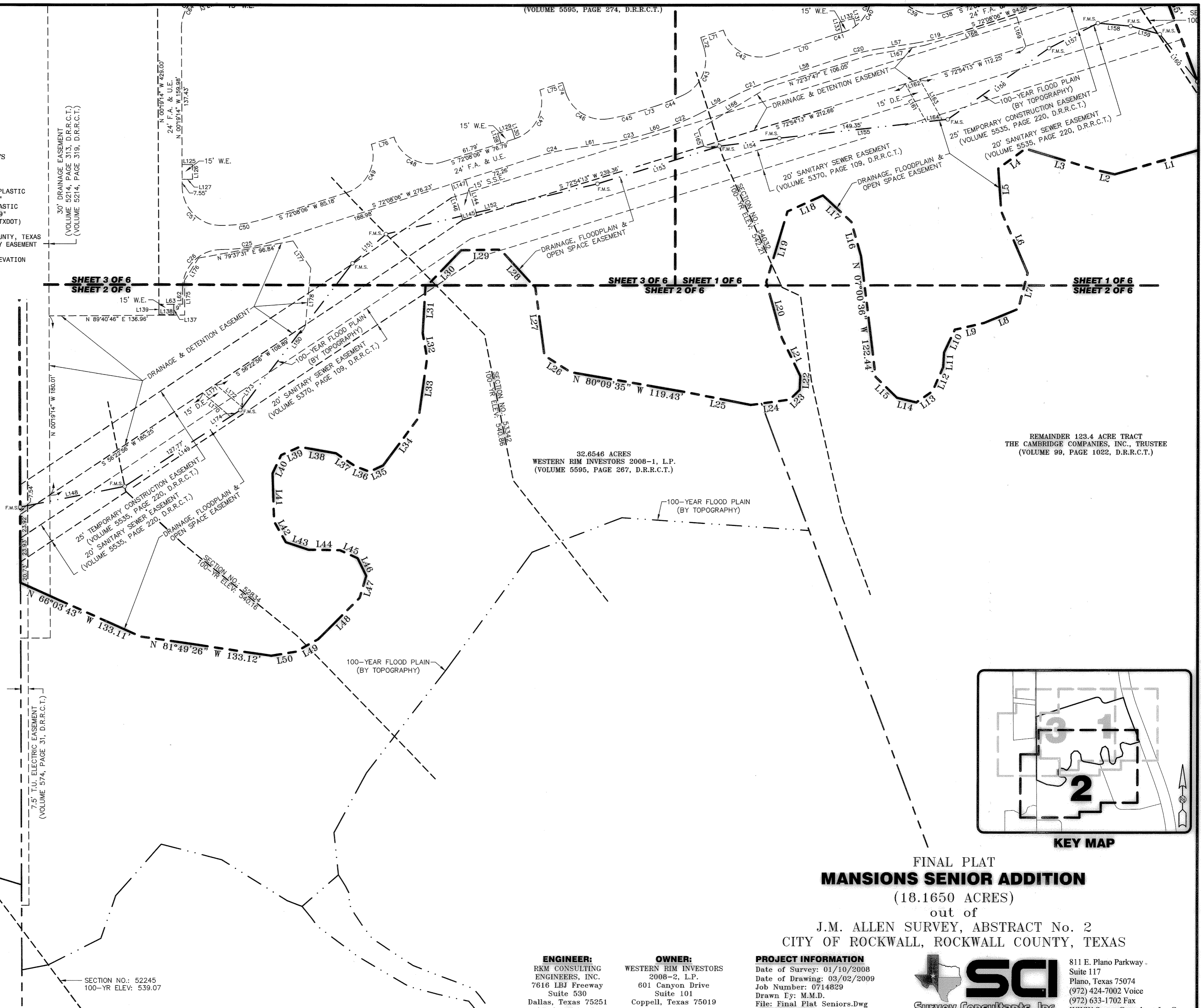
SHEET 3 OF 6 | SHEET 1 OF 6
SHEET 2 OF 6

SHEET 1 OF 6
SHEET 2 OF 6

22.303 ACRES
THOMAS REAL ESTATE, L.P.
(VOLUME 1507, PAGE 203, D.R.R.C.T.)

32.6546 ACRES
WESTERN RIM INVESTORS 2008-1, L.P.
(VOLUME 5595, PAGE 287, D.R.R.C.T.)

REMAINDER 123.4 ACRE TRACT
THE CAMBRIDGE COMPANIES, INC., TRUSTEE
(VOLUME 99, PAGE 1022, D.R.R.C.T.)



FINAL PLAT
MANSIONS SENIOR ADDITION

(18.1650 ACRES)

out of
J.M. ALLEN SURVEY, ABSTRACT No. 2
CITY OF ROCKWALL, ROCKWALL COUNTY, TEXAS

ENGINEER:
RKM CONSULTING
ENGINEERS, INC.
7616 LBJ Freeway
Suite 530
Dallas, Texas 75251
(214) 432-8070

OWNER:
WESTERN RIM INVESTORS
2008-2, L.P.
601 Canyon Drive
Suite 101
Coppell, Texas 75019

PROJECT INFORMATION
Date of Survey: 01/10/2008
Date of Drawing: 03/02/2009
Job Number: 0714829
Drawn By: M.M.D.
File: Final Plat Seniors.Dwg
SHEET 2 OF 6

SCI
Survey Consultants, Inc.

811 E. Plano Parkway - Suite 117
Plano, Texas 75074
(972) 424-7002 Voice
(972) 633-1702 Fax
WWW.SurveyConsultantsInc.Com