

SCALE: 1"=60'

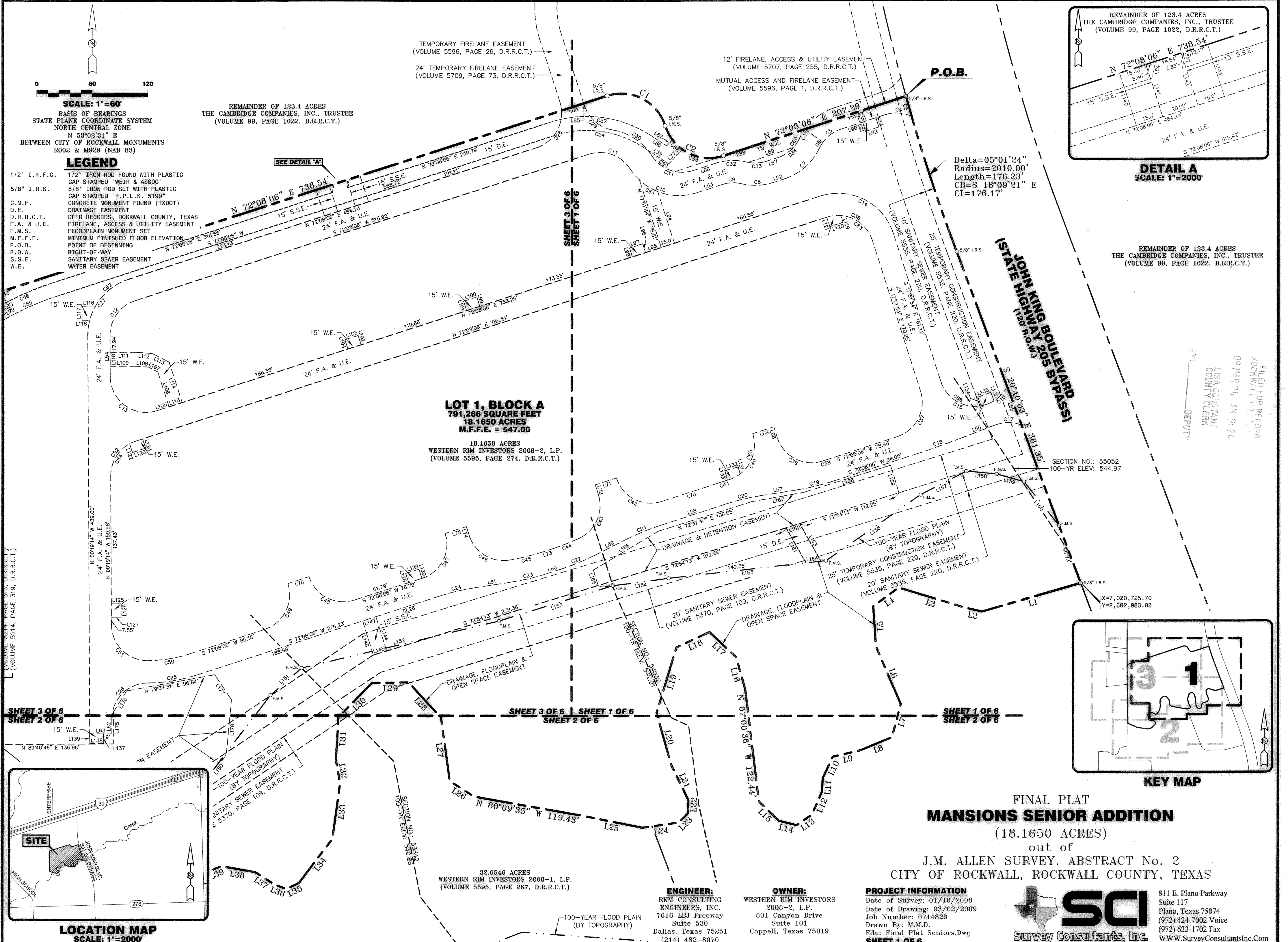
BASIS OF BEARINGS
STATE PLANE COORDINATE SYSTEM
NORTH CENTRAL ZONE
N 53°02'31" E
BETWEEN CITY OF ROCKWALL MONUMENTS
R002 & M929 (NAD 83)

LEGEND

- 1/2" I.R.F.C. 1/2" IRON ROD FOUND WITH PLASTIC CAP STAMPED "WEIR & ASSOC"
- 5/8" I.R.S. 5/8" IRON ROD SET WITH PLASTIC CAP STAMPED "R.P.L.S. 5199"
- C.M.F. CONCRETE MONUMENT FOUND (TXDOT)
- D.E. DRAINAGE EASEMENT
- D.R.R.C.T. DEED RECORDS, ROCKWALL COUNTY, TEXAS
- F.A. & U.E. FIRELANE, ACCESS & UTILITY EASEMENT
- F.M.S. FLOODPLAIN MONUMENT SET
- M.F.F.E. MINIMUM FINISHED FLOOR ELEVATION
- P.O.B. POINT OF BEGINNING
- R.O.W. RIGHT-OF-WAY
- S.S.E. SANITARY SEWER EASEMENT
- W.E. WATER EASEMENT

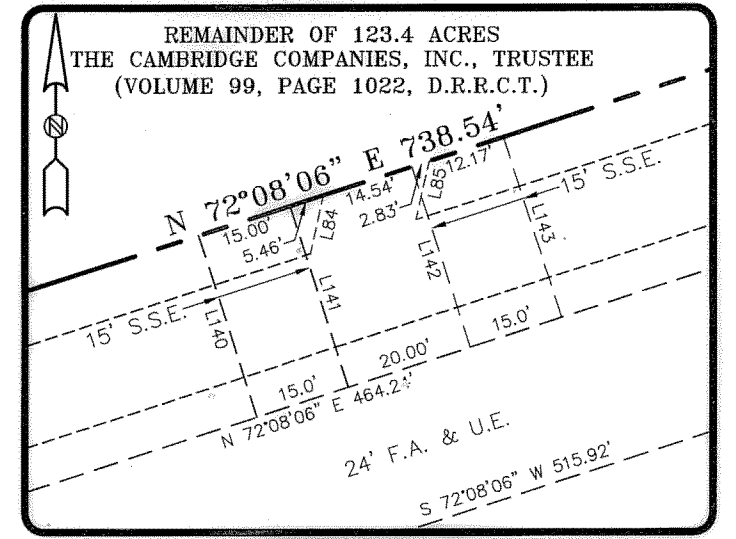
REMAINDER OF 123.4 ACRES
THE CAMBRIDGE COMPANIES, INC., TRUSTEE
(VOLUME 99, PAGE 1022, D.R.R.C.T.)

SEE DETAIL "A"



LOT 1, BLOCK A
791,266 SQUARE FEET
18.1650 ACRES
M.F.F.E. = 547.00

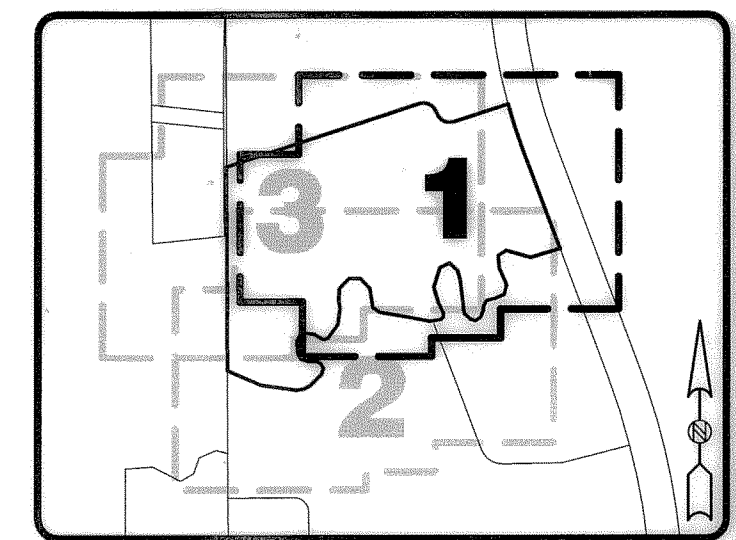
18.1650 ACRES
WESTERN RIM INVESTORS 2008-2, L.P.
(VOLUME 5595, PAGE 274, D.R.R.C.T.)



DETAIL A
SCALE: 1"=2000'

REMAINDER OF 123.4 ACRES
THE CAMBRIDGE COMPANIES, INC., TRUSTEE
(VOLUME 99, PAGE 1022, D.R.R.C.T.)

FILED FOR ME CORB
ROCKWALL COUNTY CLERK
LISA CONSTANT
09 MAR 24 AM 9:24
DEPUTY

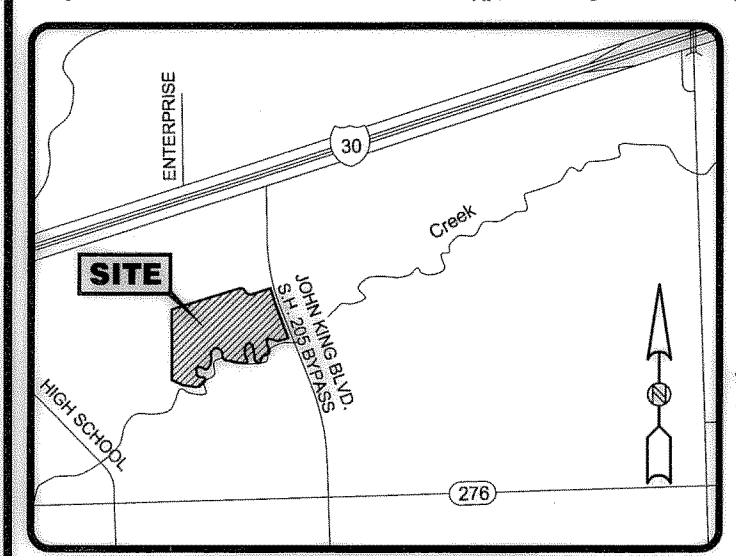


KEY MAP

SHEET 3 OF 6
SHEET 2 OF 6

SHEET 3 OF 6
SHEET 1 OF 6
SHEET 2 OF 6

SHEET 1 OF 6
SHEET 2 OF 6



LOCATION MAP
SCALE: 1"=2000'

**FINAL PLAT
MANSIONS SENIOR ADDITION**

(18.1650 ACRES)

out of
J.M. ALLEN SURVEY, ABSTRACT No. 2
CITY OF ROCKWALL, ROCKWALL COUNTY, TEXAS

32.6546 ACRES
WESTERN RIM INVESTORS 2008-1, L.P.
(VOLUME 5595, PAGE 267, D.R.R.C.T.)

ENGINEER:
RKM CONSULTING
ENGINEERS, INC.
7616 LBJ Freeway
Suite 530
Dallas, Texas 75251
(214) 432-8070

OWNER:
WESTERN RIM INVESTORS
2008-2, L.P.
601 Canyon Drive
Suite 101
Coppell, Texas 75019

PROJECT INFORMATION
Date of Survey: 01/10/2008
Date of Drawing: 03/02/2009
Job Number: 0714829
Drawn By: M.M.D.
File: Final Plat Seniors.Dwg
SHEET 1 OF 6

SCI
Survey Consultants, Inc.
811 E. Plano Parkway
Suite 117
Plano, Texas 75074
(972) 424-7002 Voice
(972) 633-1702 Fax
WWW.SurveyConsultantsInc.Com