

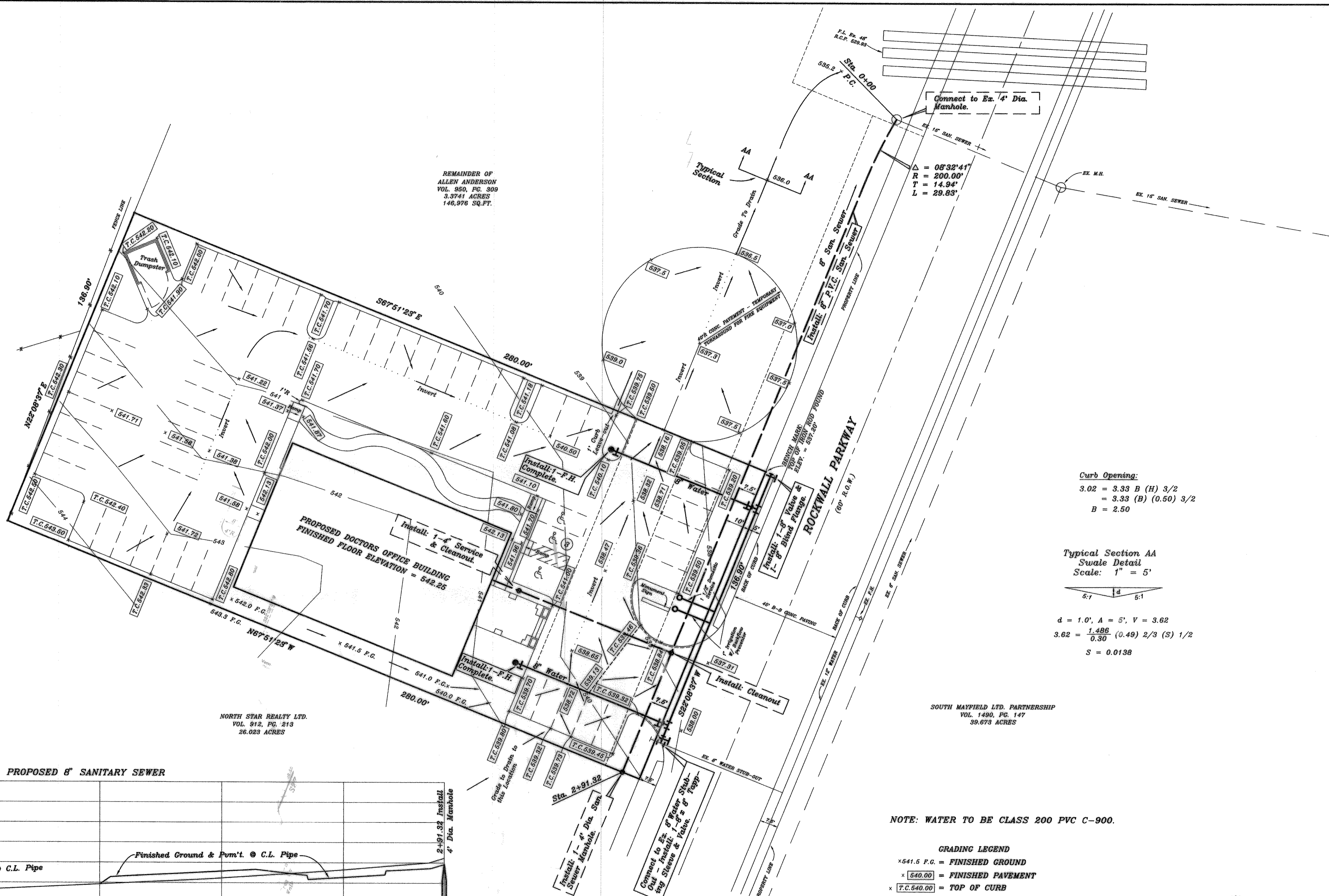


NORTH STAR REALTY LTD.
VOL. 912, PG. 213
26.023 ACRES

REMAINDER OF
ALLEN ANDERSON
VOL. 950, PG. 309
3.3741 ACRES
146,976 SQ. FT.

NORTH STAR REALTY LTD.
VOL. 912, PG. 213
26.023 ACRES

SOUTH MAYFIELD LTD. PARTNERSHIP
VOL. 1490, PG. 147
39.673 ACRES

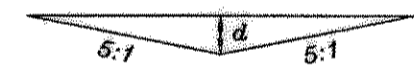


Connect to Ex. 4" Dia. Manhole.

$\Delta = 08'32'41"$
 $R = 200.00'$
 $T = 14.94'$
 $L = 29.83'$

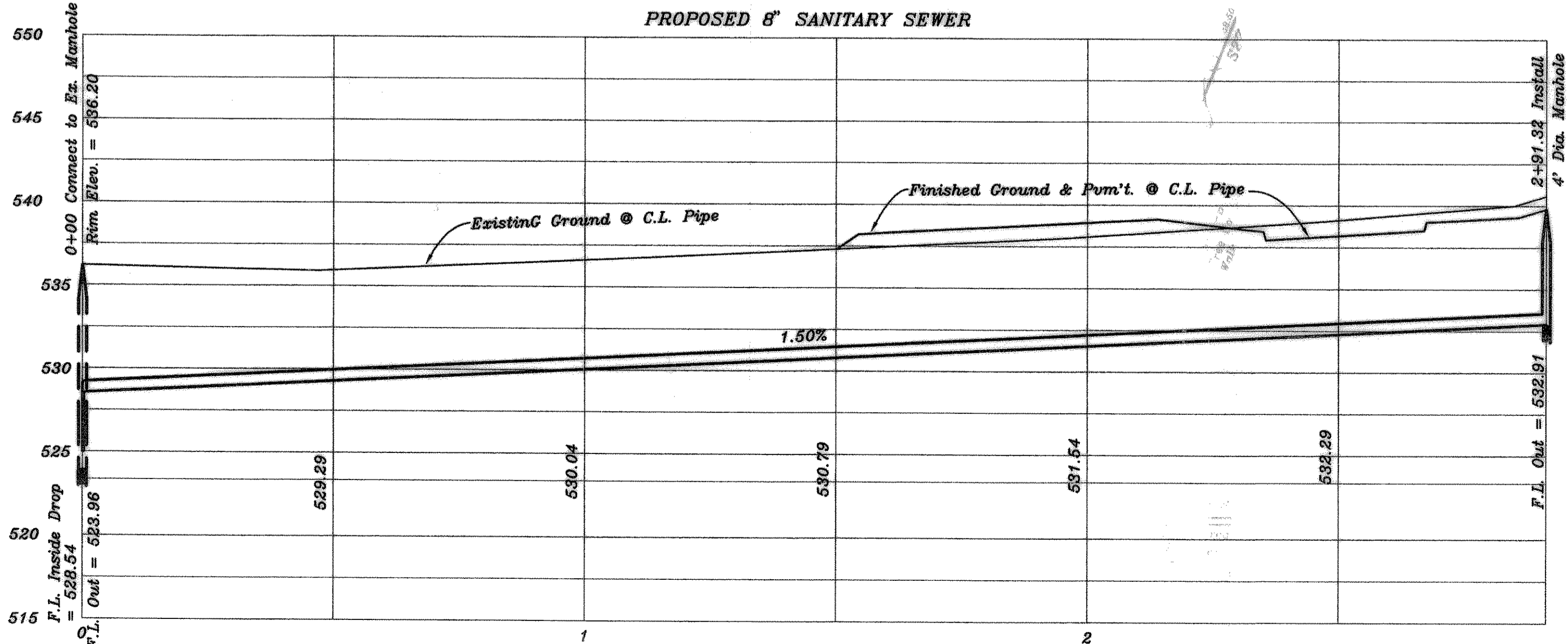
Curb Opening:
 $3.02 = 3.33 B (H) \frac{3}{2}$
 $= 3.33 (B) (0.50) \frac{3}{2}$
 $B = 2.50$

Typical Section AA
Swale Detail
Scale: 1" = 5'



$d = 1.0'$, $A = 5'$, $V = 3.62$
 $3.62 = \frac{1.486}{0.30} (0.49) \frac{2}{3} (S) \frac{1}{2}$
 $S = 0.0138$

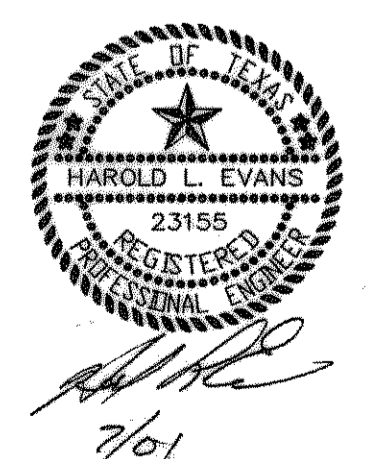
PROPOSED 8" SANITARY SEWER



NOTE: WATER TO BE CLASS 200 PVC C-900.

GRADING LEGEND
x 541.5 P.G. = FINISHED GROUND
x 540.00 = FINISHED PAVEMENT
x [T.C. 540.00] = TOP OF CURB

AS BUILT



4. AS BUILT Survey 7-12-2001

1. Revisions requested by City Of Rockwall - per First Review.	8-07-2000
2. Revisions.	9-16-2000
3. Revisions requested by City Of Rockwall - per Second Review.	10-02-2000

HAROLD L. EVANS
CONSULTING ENGINEER
P.O. BOX 28355
2331 CUS THOMASSON ROAD, SUITE 102
DALLAS, TEXAS 75228, (214) 328-8133

GRADING & UTILITY PLAN
M.R.P. ADDITION
CITY OF ROCKWALL

REVISION DESCRIPTION	DATE	SCALE	DESIGN	DRAWN
	7-07-00	1" = 20' 1" = 6'	H.L.E.	L.W.C.

SHEET NO.
5
6
JOB NO.
0050