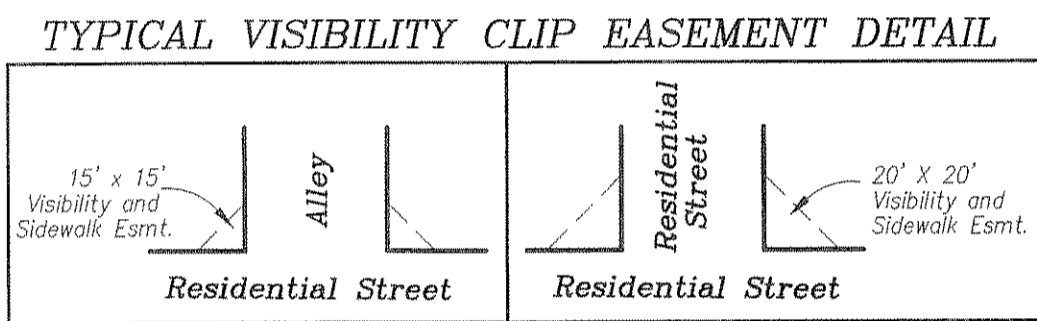
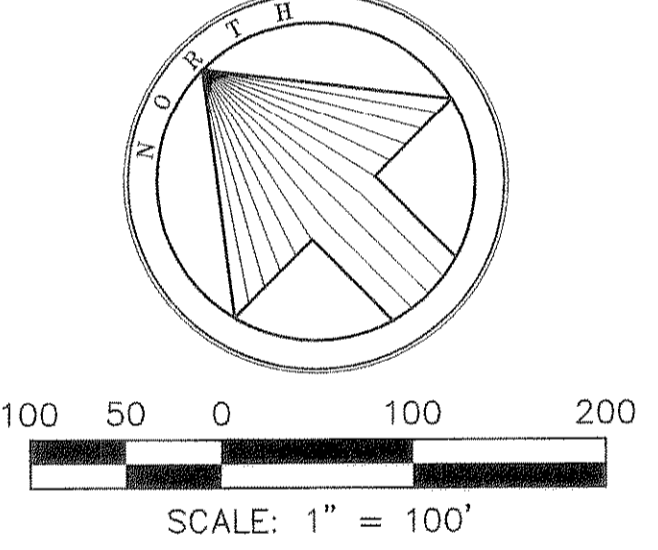
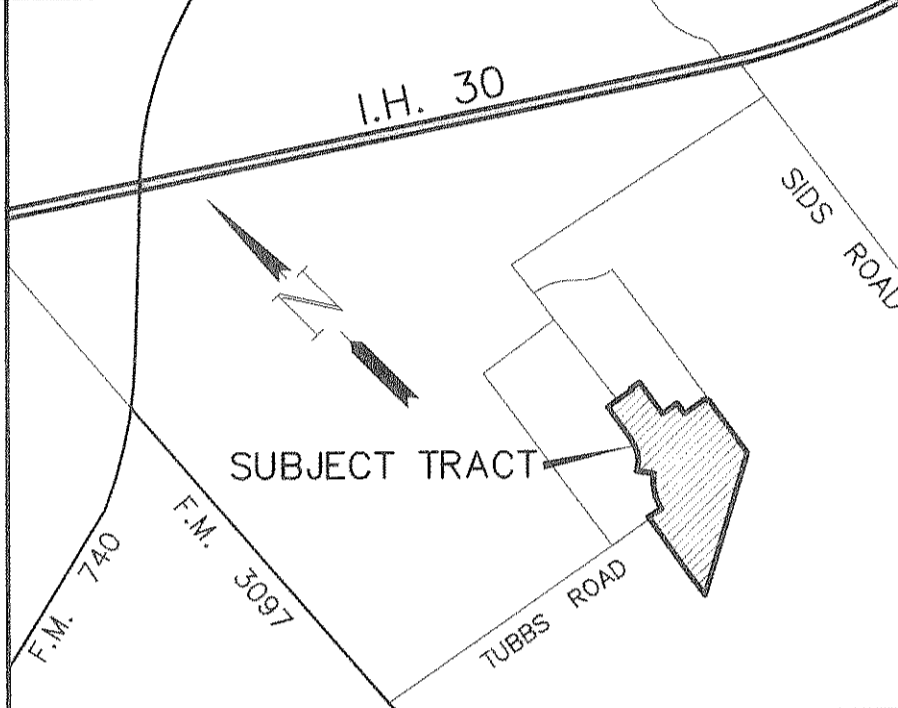


- LEGEND:**
- ⊙ = 1/2" iron pin with a red cap stamped Tipton Eng., Inc. set at corner.
 - ⊕ = 1/2" iron pin with a red cap stamped Tipton Eng., Inc. found at corner.
 - UE = UTILITY EASEMENT
 - OE = ONCOR ELECTRIC DELIVERY CO. EASEMENT
 - DE = DRAINAGE EASEMENT
 - SSE = SANITARY SEWER EASEMENT
 - TXU = TXU ELECTRIC & GAS CO. EASEMENT
 - WME = WALL/LANDSCAPE MAINTENANCE ESMT.
 - ◇ = STREET NAME CHANGE

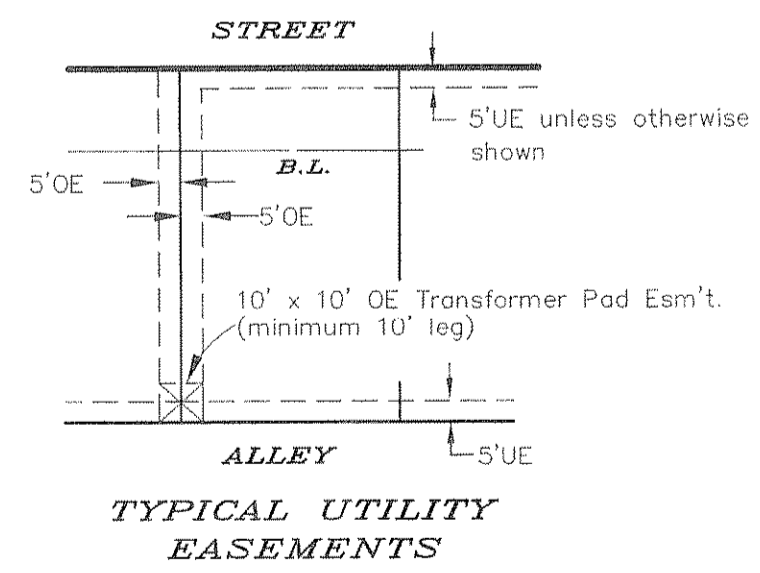


STATE PLANE COORDINATES SHOWN ARE BASED ON CITY OF ROCKWALL MONUMENT NO'S 2 & 7 (1983)
 THE CITY OF ROCKWALL ACCEPTS THE RELOCATION OF THE EXISTING TUBBS ROAD RIGHT-OF-WAY, WITH THEIR ACCEPTANCE AND RECORDATION OF THIS PLAT.

NOTE:
 NO STRUCTURES, DECKS, SWIMMING POOLS, ECT. IN EASEMENTS



BEARINGS BASED ON THE FILE PLAT OF WINDMILL RIDGE ESTATES (Cab. B, Slide 26)



FINAL PLAT
LYNDEN PARK ESTATES PHASE 4
 E.T. GAINES CHISUM SURVEY, ABSTRACT NO. 64
 G. WELLS SURVEY, ABSTRACT NO. 219
 CITY OF ROCKWALL, ROCKWALL COUNTY, TEXAS

OWNER
KIMBALL HILL HOMES - TEXAS, INC.
 1422 West Main Street ~ Suite 201 ~ Lewisville, Texas 75067
 972.353.4345

ENGINEERING/SURVEYING/PLANNING
TIPTON ENGINEERING, INC.
 6330 Broadway Blvd. ~ Suite C ~ Garland, Texas 75043
 972.226.2967