

****CAUTION****
Existing 8" & 14" Force Mains
Location & Elevation Unknown

GENERAL NOTES

- All water lines shall be PVC Class 200 DR 14. C-905 pipe for water lines larger than 12".
- All water lines to have 42" minimum cover below approved street grades as required to clear other utilities.
- All water services to be 1" polyethylene 200 PSI SDR located in the center of lot with cut-offs 3'-6" behind curb.
- All sanitary sewer laterals shall be 4" and located 10' downstream of water service, unless otherwise shown on plans.
- All water mains shall pass a four (4) hour 200 psi pressure test in accordance with the City of Rockwall Specifications. Test to be made by the Contractor.
- The Contractor shall record the location of all water and sewer services relative to lot corners. He shall also record any additions, deletions, or revisions to the plans which take place in the field. This information is to be furnished to the Engineer immediately after installation for the purpose of preparing "as-built" plans.
- Meter boxes will be supplied & installed by the Contractor.
- The Contractor shall be responsible for coordinating line and grade for all water, sanitary sewer, and storm sewer and appurtenances. The Engineer shall furnish this information upon request.
- Plastic tape for utility to be attached to the end of all water and sewer service lines, and extended above ground level. The tape shall meet the following specifications.
 - "Alien Marking Tape" or equal
 - Tape marked continuously "Caution - Water Line" or "Caution - Sewer Line"
 - Six (6) inches in width
 - Red tape for sewer services
 - Blue tape for water services
- All existing underground facilities, such as existing water lines, sanitary sewer lines, gas lines, storm sewer lines, telephone conduits, electrical conduits, etc., that might conflict with our proposed underground facilities must be uncovered and the location verified with the Contractor prior to any underground construction for this project. The Engineer shall assist the Contractor in determining locations and elevations of these existing underground facilities.
- Re TV sewer lines prior to end of 1yr maintenance bond.

SANITARY SEWER CURVE DATA

Curve 1	Curve 2	Curve 3
A=00°51'42"	A=46°11'12"	A=14°15'13"
R=607.34'	R=520.58'	R=200.00'
T=4.57'	T=221.98'	T=25.01'
L=9.13'	L=419.64'	L=49.75'
Curve 4	Curve 5	Curve 6
A=20°19'30"	A=12°09'34"	A=10°50'13"
R=270.50'	R=277.66'	R=822.58'
T=48.49'	T=29.57'	T=78.02'
L=95.96'	L=58.92'	L=155.58'
Curve 7	Curve 8	Curve 9
A=13°31'30"	A=03°37'48"	A=31°55'57"
R=565.50'	R=67.06'	R=288.50'
T=67.06'	T=26.07'	T=76.82'
L=133.49'	L=52.12'	L=149.64'
Curve 10	Curve 11	
A=08°53'42"	A=17°04'16"	
R=1287.00'	R=1258.50'	
T=100.10'	T=188.43'	
L=199.80'	L=374.07'	

AS BUILT PLANS

1/12/2005

The alignment and grade were set on the ground for construction per the plans. The engineer did not verify alignment or grades after construction. We are not aware of any changes or revisions to these plans during construction except as noted.

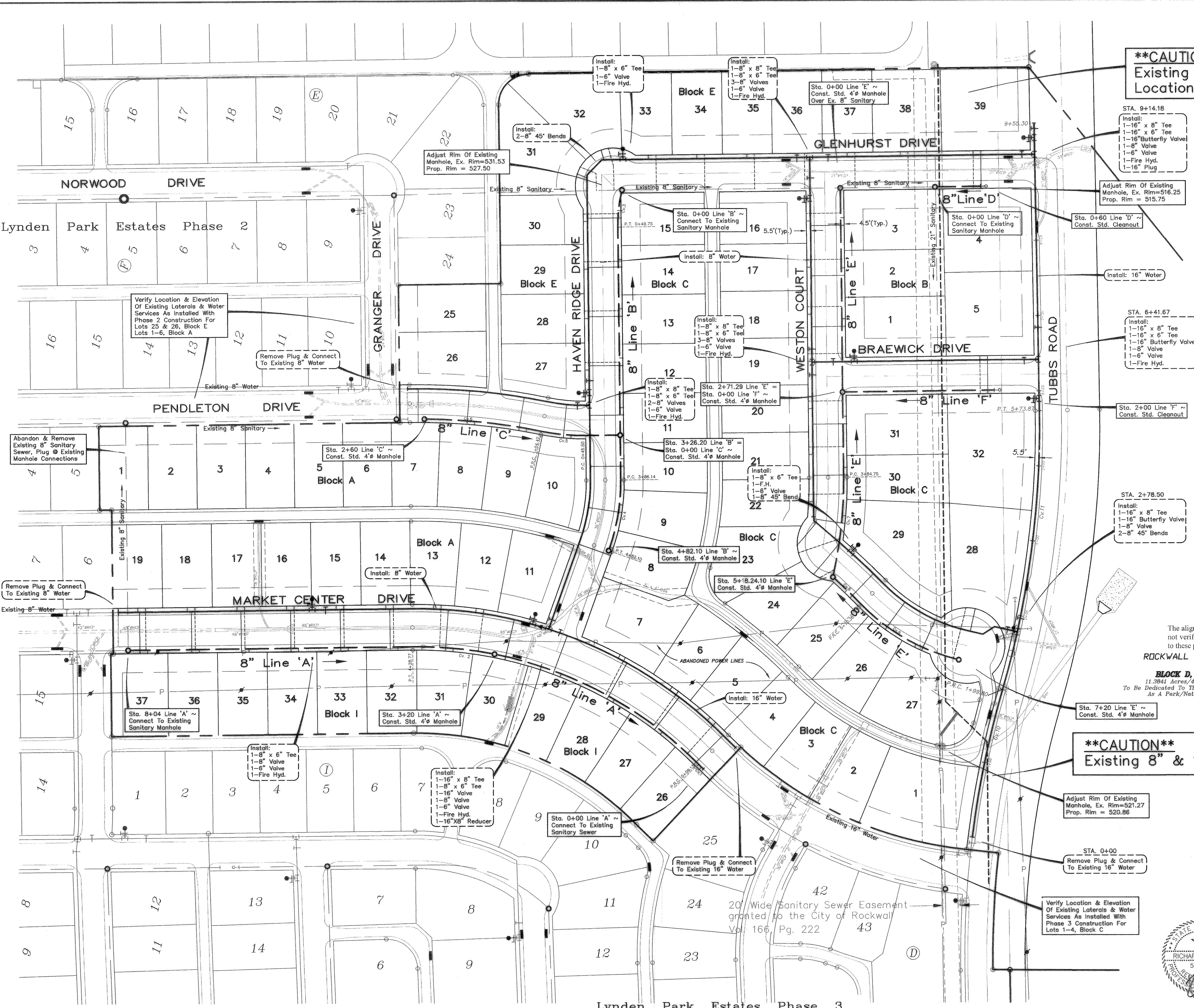
ROCKWALL LAKE

BLOCK D, LOT 1
11.3941 Acres/495,890 SF
To Be Dedicated To The City of Rockwall
As A Park/Natural Area

****CAUTION****
Existing 8" & 14" Force Mains

Bench Mark 1
A Standard U.S.C.&G.S. Disk Stamped 'M 929 1946'
Approx. 1.9 miles southeast along State Hwy. 205
from Courthouse at Rockwall to bridge at Buffalo
Creek, at the northwest corner of the concrete
bridge on the top of the concrete guardrail base
approx. 17 feet southwest of the centerline of the
highway, and approx. 3 feet southeast of the northwest
end of the guardrail base.
Elevation = 524.65

Bench Mark 2
Top of Concrete ROW Marker, approx. 1.6 miles
southeast along State Hwy. 205 and then approx.
0.5 miles east along FM 276 to intersection of
paved road, at fence corner at southwest quadrant
of intersection.
Elevation = 543.10



Water & Sanitary Sewer Plan
Lynden Park Estates Phase 4
City Of Rockwall, Texas

TIPTON ENGINEERING, INC.
6330 Broadway Blvd. ~ Suite C ~ Garland, Texas 75043

DESIGN	DRAWN	DATE	SCALE	NOTES	FILE	NO.
T.E. Inc.	T.E. Inc.	8-2002	1"=60'		4580	17

