

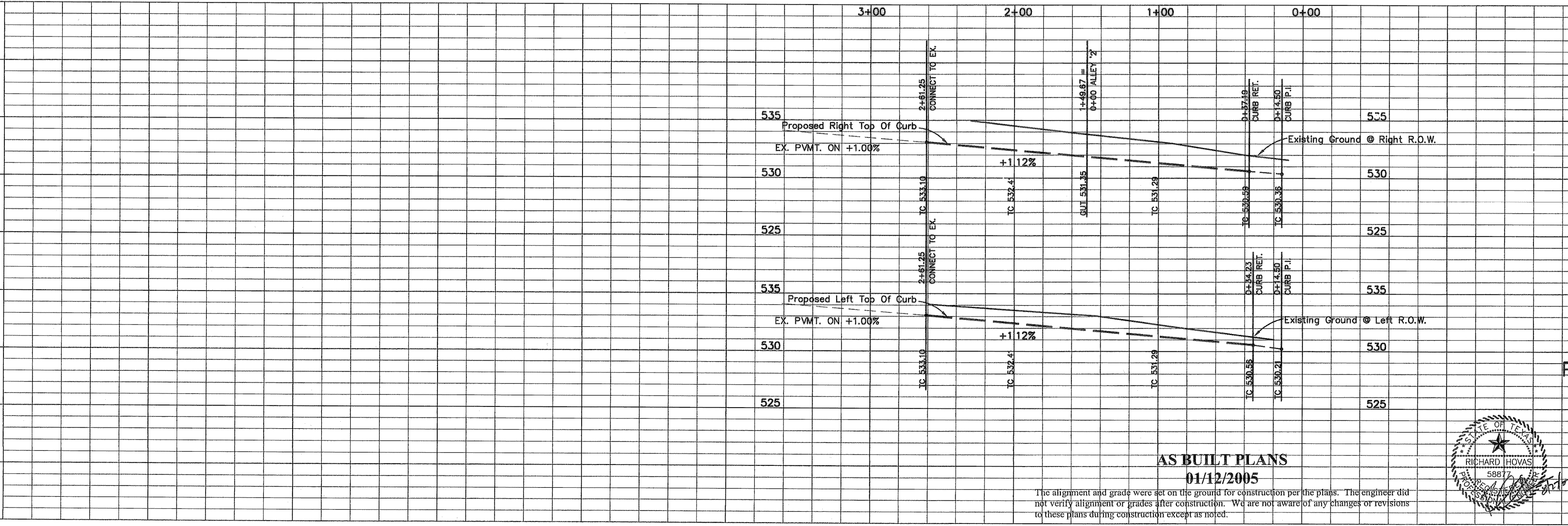
CAUTION !!!
EXISTING UTILITIES

EXISTING UTILITIES AND UNDERGROUND FACILITIES INDICATED ON THESE PLANS HAVE BEEN LOCATED FROM REFERENCE INFORMATION. IT SHALL BE THE RESPONSIBILITY OF THE CONTRACTOR TO VERIFY BOTH HORIZONTALLY AND VERTICALLY THE LOCATION OF ALL EXISTING UTILITIES AND UNDERGROUND FACILITIES PRIOR TO CONSTRUCTION, TO TAKE NECESSARY PRECAUTIONS IN ORDER TO PROTECT ALL FACILITIES ENCOUNTERED. THE CONTRACTOR SHALL PRESERVE AND PROTECT ALL EXISTING UTILITIES FROM DAMAGE DURING CONSTRUCTION.

Note!!
 Construct Barrier Free Ramps
 With Street Paving At All
 Intersections As Per City Standards.

Bench Mark 1
 A Standard U.S.C.&G.S. Disk Stamped 'M 929 1946'
 Approx. 1.9 miles southeast along State Hwy. 205
 from Courthouse at Rockwall to bridge at Buffalo
 Creek, at the northwest corner of the concrete
 bridge in the top of the concrete guardrail base
 approx. 17 feet southwest of the centerline of the
 highway, and approx. 3 feet southeast of the northwest
 end of the guardrail base.
 Elevation = 524.65

Bench Mark 2
 Top of Concrete ROW Marker, approx. 1.6 miles
 southeast along State Hwy. 205 and then approx.
 0.6 miles east along FM 276 to intersection of
 paved road, at fence corner at southwest quadrant
 of intersection.
 Elevation = 543.10



PENDLETON DRIVE, ALLEY '1'

PAVING PLAN						
Lynden Park Estates Phase 4						
City Of Rockwall, Texas						
TIPTON ENGINEERING, INC.						
6330 Broadway Blvd. ~ Suite C ~ Garland, Texas 75043						
DESIGN	DRAWN	DATE	SCALE	NOTES	FILE	NO.
T.E. Inc.	T.E. Inc.	8-2002	1"=40'Hor 1"=5'Vert		4580	8

AS BUILT PLANS
 01/12/2005

The alignment and grade were set on the ground for construction per the plans. The engineer did not verify alignment or grades after construction. We are not aware of any changes or revisions to these plans during construction except as noted.

