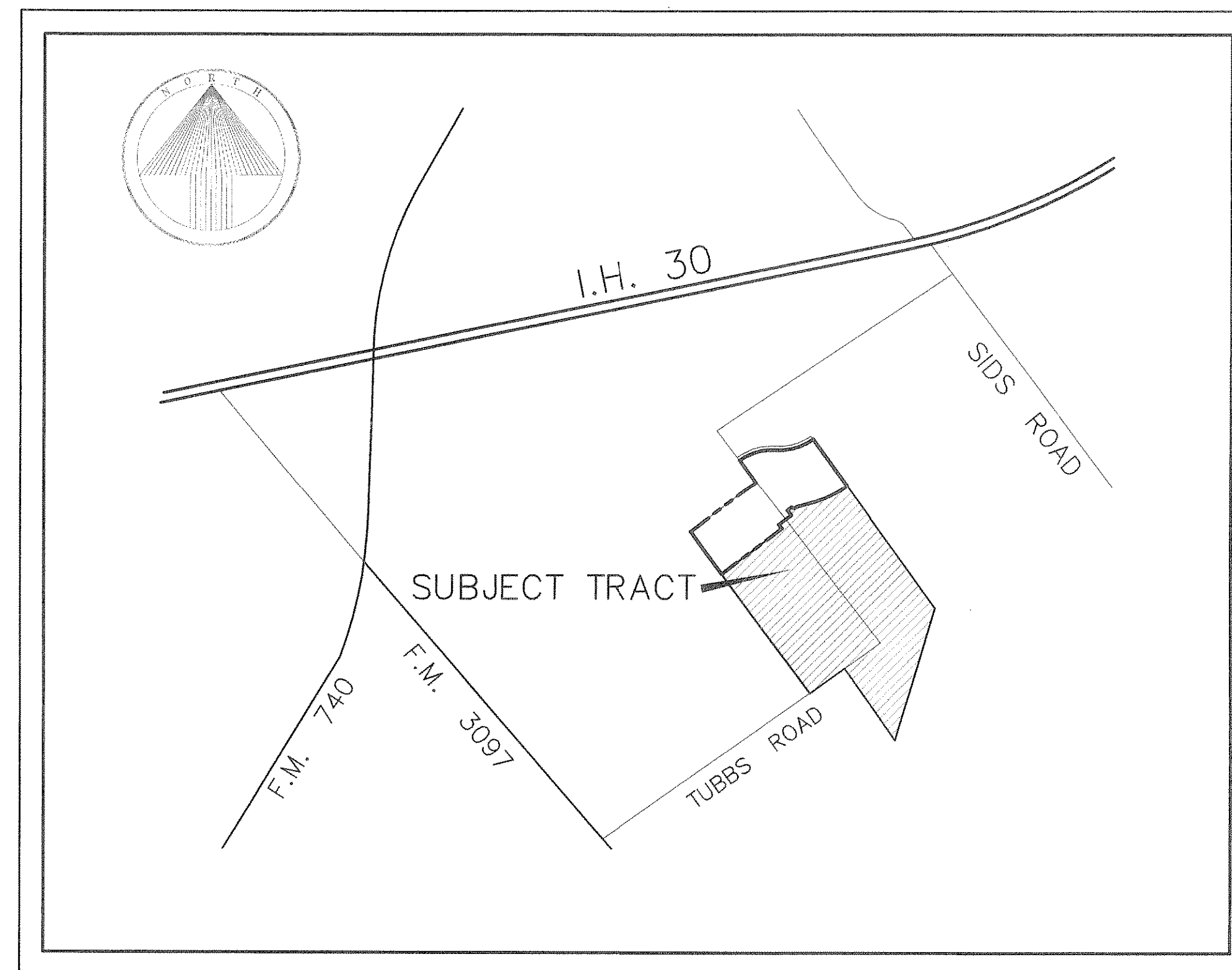


# DEVELOPMENT PLANS FOR LYNDEN PARK ESTATES PHASE 4

CITY OF ROCKWALL, TEXAS

- GENERAL NOTES
1. All street and alleys intersections and connections shall be built by the developer.
  2. Excavation from streets to be deposited in low areas to allow proper drainage, except existing creek.
  3. All existing ditches, except as noted on drainage plans, are to be filled to conform to surrounding terrain.
  4. It will be the responsibility of the developer and/ or the contractor to protect and maintain to proper line and grade all public utilities, manholes, cleanouts, valve boxes, fire hydrants, etc. during the construction of this project, prior to and after placing permanent pavement.
  5. All materials and workmanship shall conform to the City Standards and Specifications.
  6. Fill shall be compacted with sharpsfoot roller.

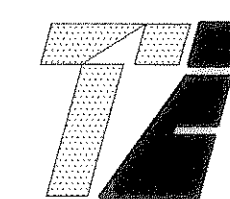


INDEX

Sheet No.	Description
1-2	Final Plat
3-9	Paving Plans
10	Alley Profiles
11	Drainage Area Map
12	Inlet Calculation Chart
13-16	Storm Sewer Plans
17	Water & Sanitary Sewer Plan
18	Sanitary Sewer Profiles
19	Water Profile
20	Stormwater Pollution Prevention Plan
21	Lot Grading Plans
22	Screening Wall Plan

PREPARED FOR  
**KIMBALL HILL HOMES**

1422 West Main Street ~ Suite 210 ~ Lewisville, Texas 75067  
(972) 353-4345



**TIPTON ENGINEERING, INC.**

6330 Broadway Blvd. ~ Suite C ~ Garland, Texas 75043 (972) 226-2967

**AS BUILT PLANS**  
1/12/2005

The alignment and grade were set on the ground for construction per the plans. The engineer did not verify alignment or grades after construction. We are not aware of any changes or revisions to these plans during construction except as noted.

