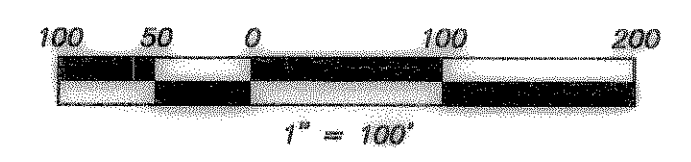
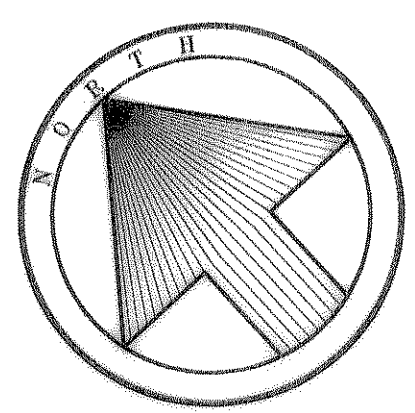


Tipton Eng.



BEARINGS BASED ON THE FINAL PLAT OF LYNDEN PARK ESTATES PHASE 2 (Cab. D, Slide 341)

- LEGEND:**
- ⊙ = 1/2" iron pin with a red cap stamped Tipton Eng., Inc. set at corner.
 - ⊕ = 1/2" iron pin with a red cap stamped Tipton Eng., Inc. found at corner.
 - TXU = TXU ELECTRIC & GAS CO. EASEMENT
 - WLME = WALL AND LANDSCAPE MAINTENANCE EASEMENT
 - ◇ = STREET NAME CHANGE

R = 1250.00'
D = 0708°12"
T = 77.58'
L = 154.97'
CH = 154.87'
CB = S 47°55'42" W

R = 515.00'
D = 3707°31"
T = 172.94'
L = 333.70'
CH = 327.89'
CB = S 20°22'55" E

R = 405.00'
D = 46°19'00"
T = 173.23'
L = 327.39'
CH = 318.55'
CB = S 22°25'54" E

R = 685.00'
D = 02°32'46"
T = 15.22'
L = 30.44'
CH = 30.44'
CB = S 00°32'47" E

R = 425.00'
D = 04°43'26"
T = 17.53'
L = 35.04'
CH = 35.03'
CB = N 46°50'13" E

R = 1250.00'
D = 0708°12"
T = 77.58'
L = 154.97'
CH = 154.87'
CB = S 47°55'42" W

R = 1250.00'
D = 0708°12"
T = 77.58'
L = 154.97'
CH = 154.87'
CB = S 47°55'42" W

R = 1250.00'
D = 0708°12"
T = 77.58'
L = 154.97'
CH = 154.87'
CB = S 47°55'42" W

R = 1250.00'
D = 0708°12"
T = 77.58'
L = 154.97'
CH = 154.87'
CB = S 47°55'42" W

R = 1250.00'
D = 0708°12"
T = 77.58'
L = 154.97'
CH = 154.87'
CB = S 47°55'42" W

R = 1250.00'
D = 0708°12"
T = 77.58'
L = 154.97'
CH = 154.87'
CB = S 47°55'42" W

R = 1250.00'
D = 0708°12"
T = 77.58'
L = 154.97'
CH = 154.87'
CB = S 47°55'42" W

R = 1250.00'
D = 0708°12"
T = 77.58'
L = 154.97'
CH = 154.87'
CB = S 47°55'42" W

R = 1250.00'
D = 0708°12"
T = 77.58'
L = 154.97'
CH = 154.87'
CB = S 47°55'42" W

R = 1250.00'
D = 0708°12"
T = 77.58'
L = 154.97'
CH = 154.87'
CB = S 47°55'42" W

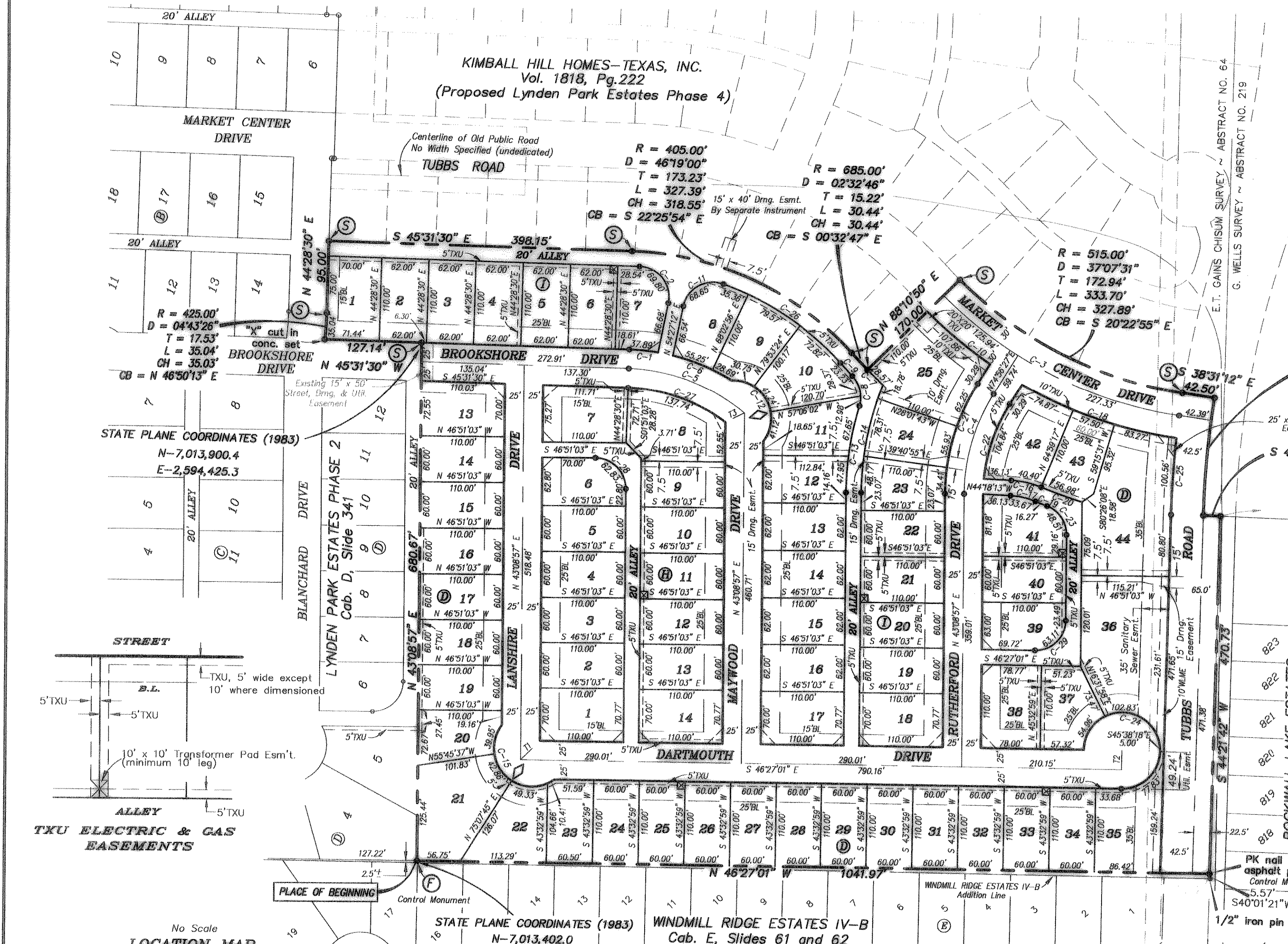
R = 1250.00'
D = 0708°12"
T = 77.58'
L = 154.97'
CH = 154.87'
CB = S 47°55'42" W

R = 1250.00'
D = 0708°12"
T = 77.58'
L = 154.97'
CH = 154.87'
CB = S 47°55'42" W

R = 1250.00'
D = 0708°12"
T = 77.58'
L = 154.97'
CH = 154.87'
CB = S 47°55'42" W

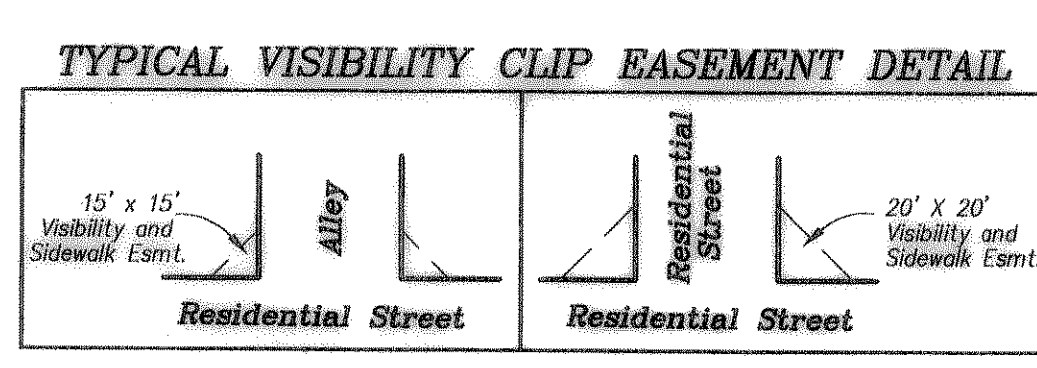
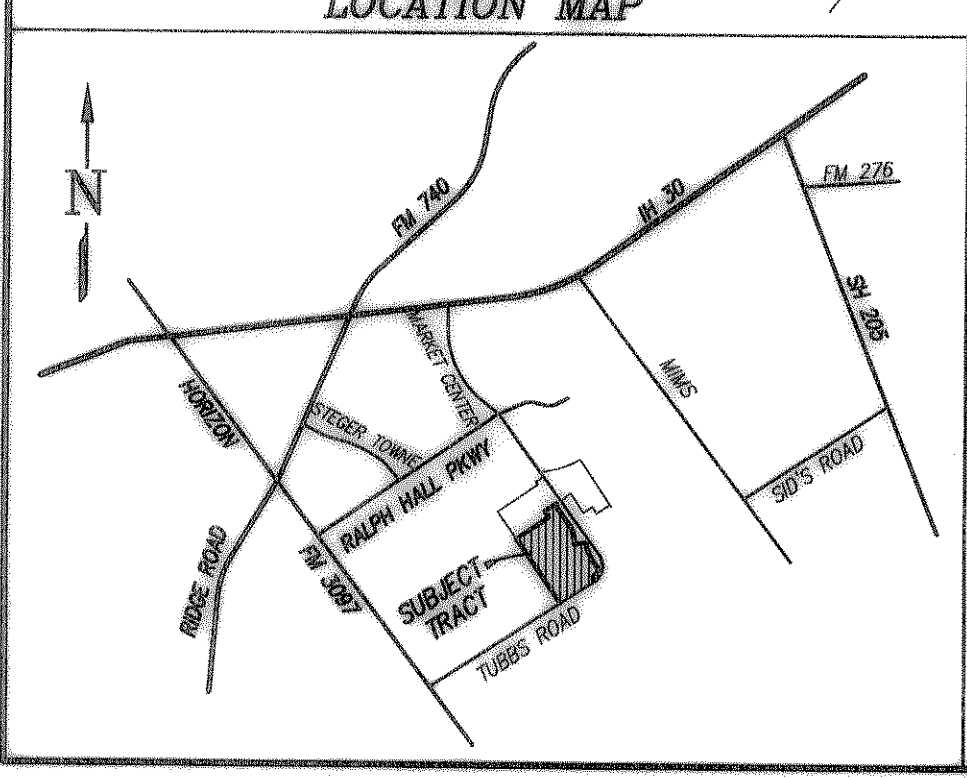
R = 1250.00'
D = 0708°12"
T = 77.58'
L = 154.97'
CH = 154.87'
CB = S 47°55'42" W

R = 1250.00'
D = 0708°12"
T = 77.58'
L = 154.97'
CH = 154.87'
CB = S 47°55'42" W



INTERIOR LINE TABLE

TANGENT	BEARING	LENGTH
11	S 88°20'58" W	21.14'
12	S 43°32'58" W	25.00'
13	S 72°35'44" E	16.65'



STATE PLANE COORDINATES SHOWN ARE BASED ON CITY OF ROCKWALL MONUMENT NO'S 2 & 7 (1983)
THE CITY OF ROCKWALL ACCEPTS THE RELOCATION OF THE EXISTING TUBBS ROAD RIGHT-OF-WAY, WITH THEIR ACCEPTANCE AND RECORDATION OF THIS PLAT.

**FINAL PLAT
LYNDEN PARK ESTATES PHASE 3
E.T. GAINES CHISUM SURVEY, ABSTRACT NO. 64
CITY OF ROCKWALL, ROCKWALL COUNTY, TEXAS**

OWNER
KIMBALL HILL HOMES - TEXAS, INC.
1422 West Main Street ~ Suite 201 ~ Lewisville, Texas 75087
972.953.4045

ENGINEERING/SURVEYING/PLANNING
TIPTON ENGINEERING, INC.
6330 Broadway Blvd. ~ Suite C ~ Garland, Texas 75043
972.226.2967

71 LOTS 788,884SQ.FT./18.1103 ACRES 11/28/01 PLAT/4579