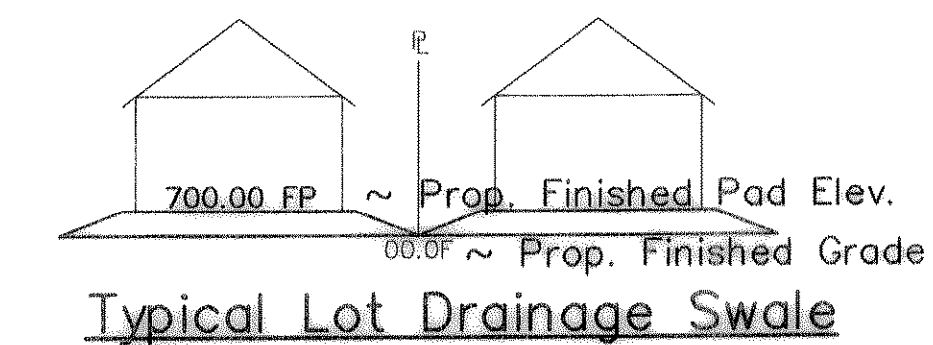
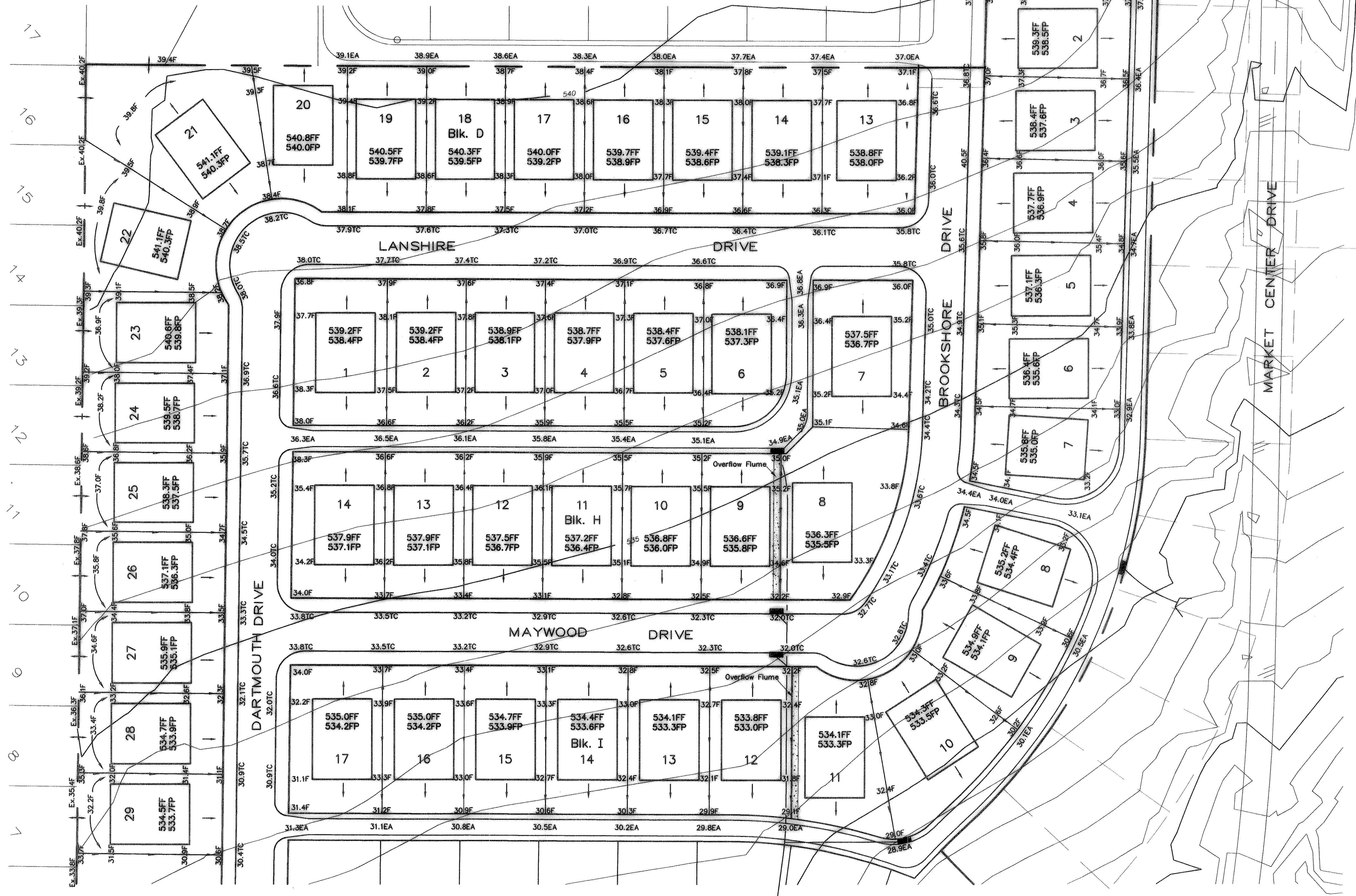


WINDMILL RIDGE ESTATES



- Legend**
- 700.00 FF ~ Prop. Finished Floor Elev.
 - 700.00 FP ~ Prop. Finished Pad Elev.
 - 00.0TC ~ Prop. Top Of Curb Elevation
 - 00.0EA ~ Prop. Edge Of Alley Elevation
 - 00.0FF ~ Prop. Finished Grade
 - ~ Direction Of Flow

Bench Mark 1
A Standard U.S.C.&G.S. Disk Stamped 'M 929 1946'
Approx. 1.9 miles southeast along State Hwy. 205
from Courthouse at Rockwall to bridge at Buffalo
Creek, at the northwest corner of the concrete
bridge in the top of the concrete guardrail base
approx. 17 feet southwest of the centerline of the
highway, and approx. 3 feet southeast of the northwest
end of the guardrail base.
Elevation = 524.65

Bench Mark 2
Top of Concrete ROW Marker, approx. 1.6 miles
southeast along State Hwy. 205 and then approx.
0.6 miles east along FM 276 to intersection of
paved road, at fence corner at southwest quadrant
of intersection.
Elevation = 543.10

LOT GRADING PLAN						
LYNDEN PARK ESTATES PHASE 3						
City Of Rockwall, Texas						
6330 Broadway Blvd. ~ Suite C ~ Garland, Texas 75043						
DESIGN	DRAWN	DATE	SCALE	NOTES	FILE	NO.
T.E. Inc.	T.E. Inc.	03/00	1"=40'		4579	18