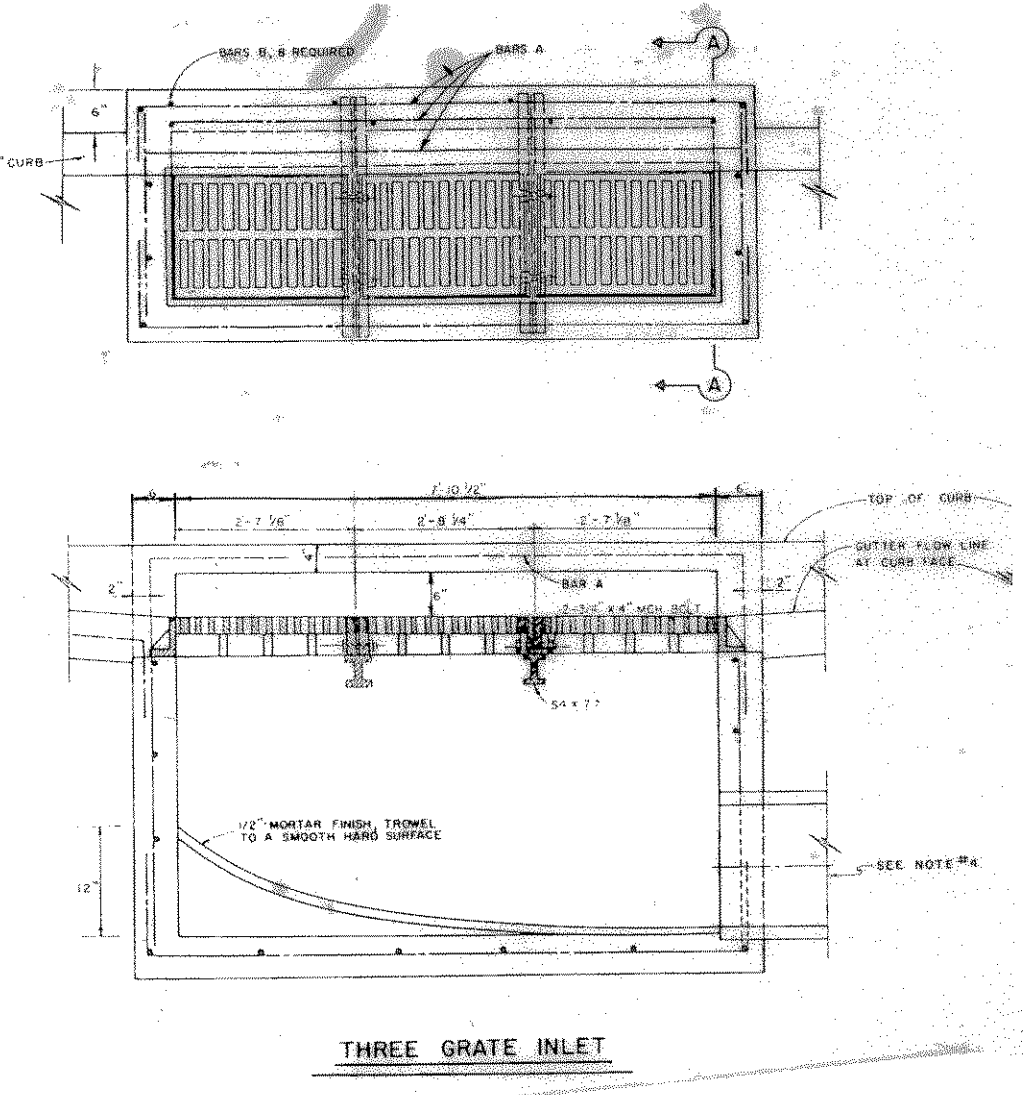


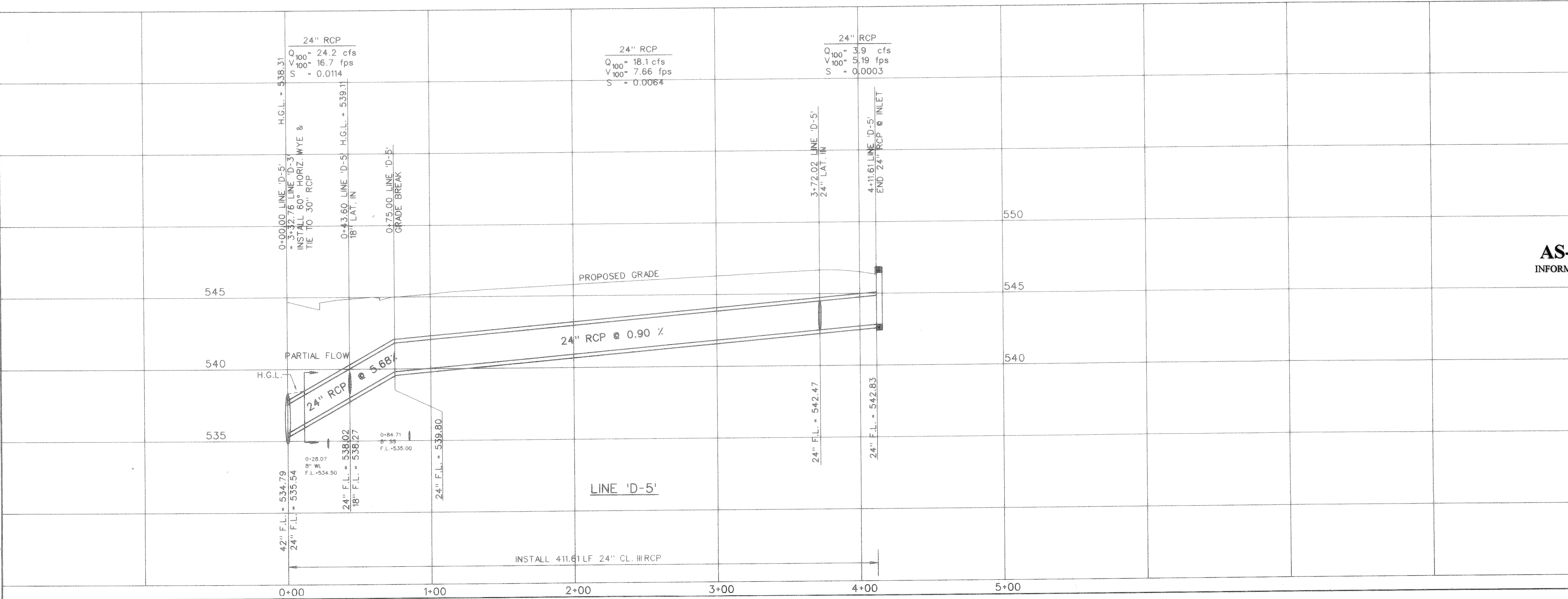
STORM SEWER CURVE DATA			
CURVE NO.	①	②	③
Δ	73° 00' 44"	12° 07' 42"	37° 59' 30"
R	65.00'	1089.98'	65.00'
T	48.11'	115.80'	22.38'
L	82.83'	230.73'	43.10'

- NOTES:
1. CURB AND GUTTER INLETS TO BE USED IN ALL ALLEYS WHERE INLETS ARE REQUIRED.
 2. ALL GRATE AND FRAME SHALL BE MANUFACTURED BY BOWEN & BARRETT COMPANY, INC. OR APPROVED EQUIV.
 3. TYPICAL GRATES TO BE USED AS SHOWN ON THIS PLAN.
 4. CURB SHALL BE PLACED IN ANY WALL, BUT SHALL NOT ENTER ANY CORNER OR BOTTOM.
 5. CONC. SHALL BE A MIN. OF 4000 P.S.I.
 6. NO GRATING SHALL BE INSTALLED ON ALL CURB AND GUTTER INLETS.

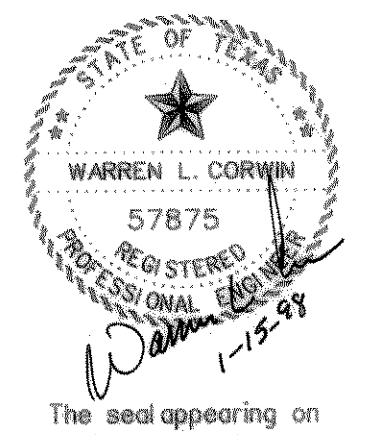


BENCHMARK:
 "□" cut on top of curb, center of inlet on the Northwest side of Rockwall Pkwy. approx. 140' Northwest of Woodcreek Dr.
 ELEVATION - 527.25

FILE: 9702sd5.dgn
 REF FILE:
 VIEW:
 DATE:



AS-BUILT JULY 1999
 INFORMATION PROVIDED BY CONTRACTORS
 (NOT FIELD VERIFIED)



The seal appearing on this document was authorized by Warren L. Corwin, P.E. 57875, on January 15, 1996

NO.	REVISIONS	BY	DATE
1	REVISED 'D-5' PER 'D-4' CHANGES	PJB	6-23-97

CORWIN ENGINEERING, INC.
 8131 LBJ FREEWAY, SUITE 333
 DALLAS, TEXAS 75251 (972) 480-0305

DEVELOPMENT PLANS FOR
LYNDEN PARK ESTATES PHASE IA
 ROCKWALL, TEXAS

STORM SEWER PLAN AND PROFILE
 LINE 'D-5'

DRAWN BY	DESIGNED BY	CHECKED BY	SHEET NO.
FWB	FWB	FWB	21 OF 24
JOB NUMBER	DATE	SCALE: 1"=4' V 1"=40' H	
9702	MAY, 1997		