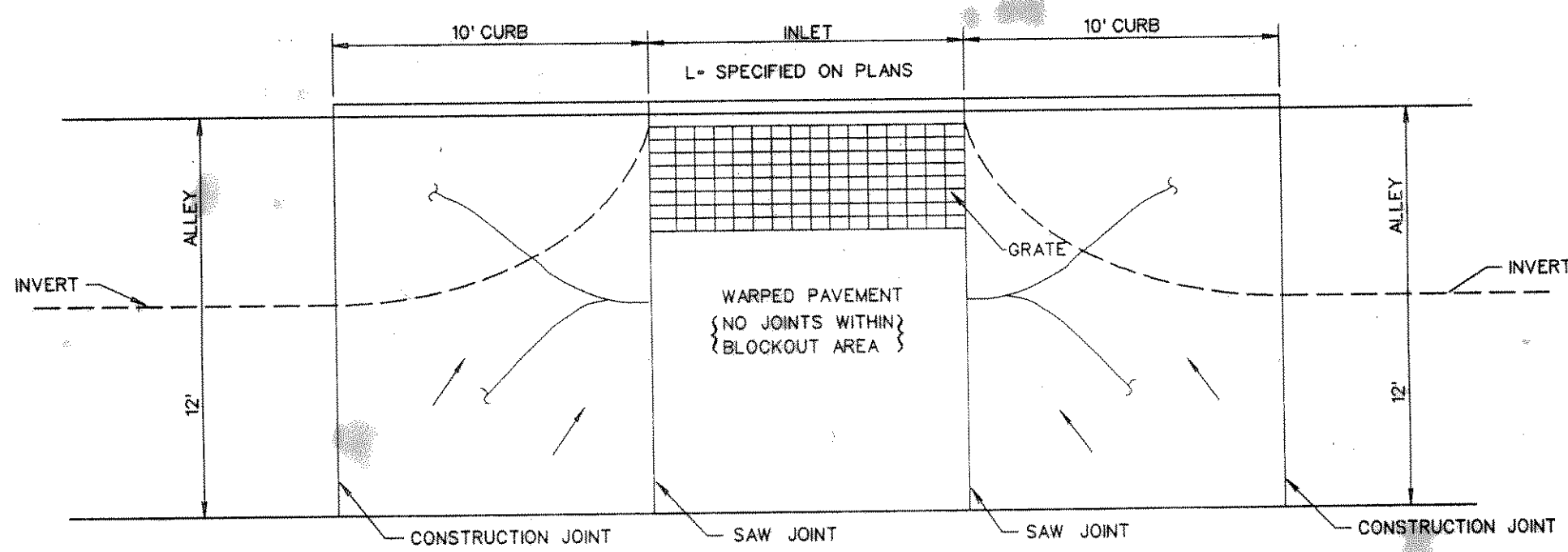
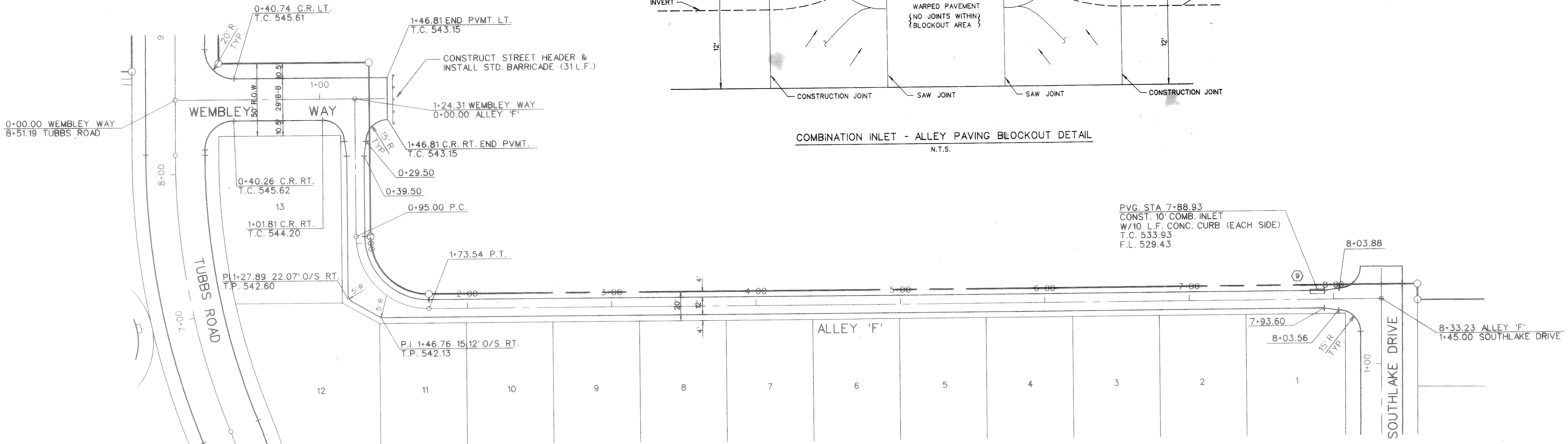
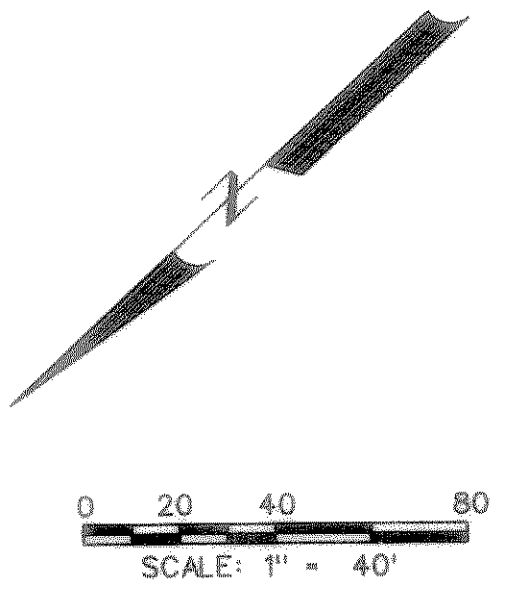


CONTRACTOR SHALL PROVIDE LAY DOWN CURB AT ALL STREET INTERSECTIONS.

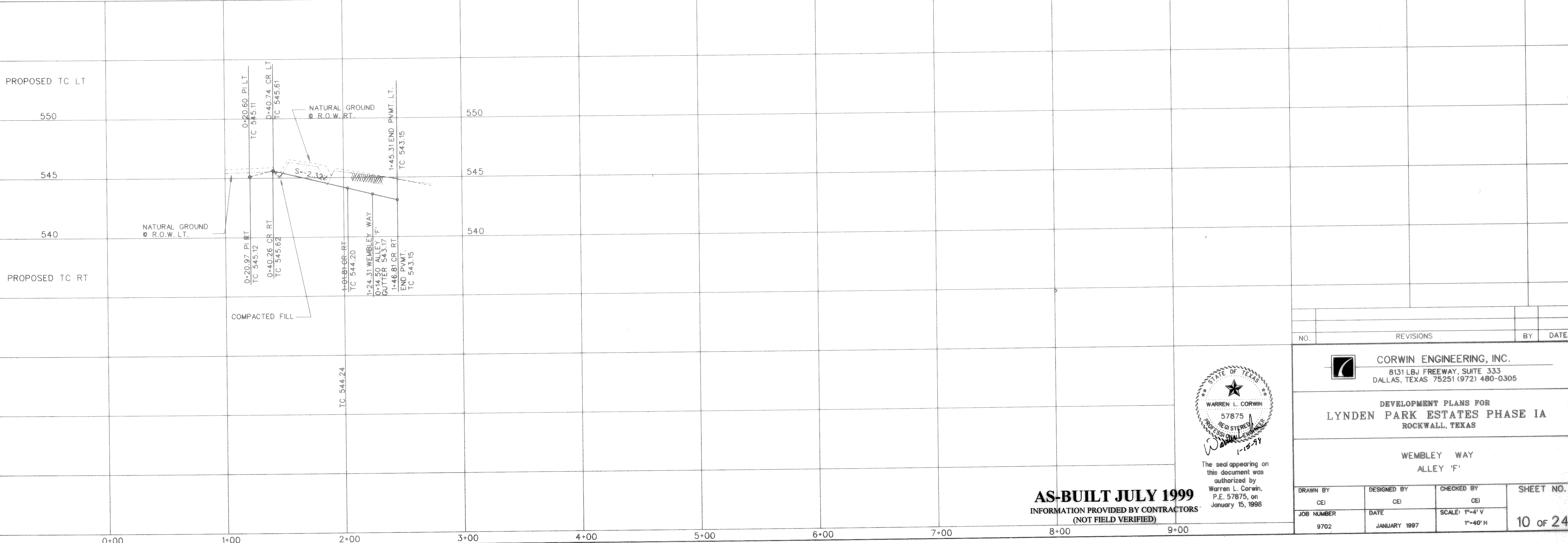
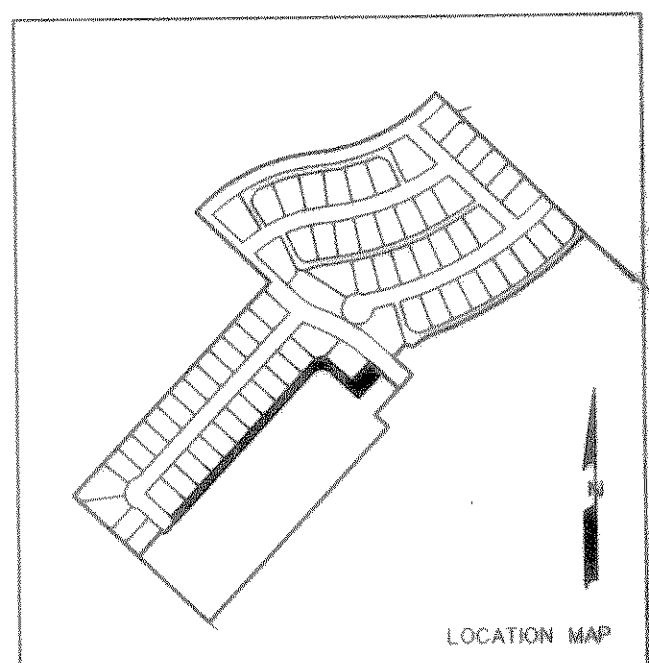


COMBINATION INLET - ALLEY PAVING BLOCKOUT DETAIL
N.T.S.



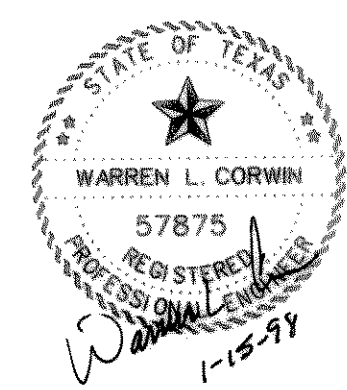
PVG. STA 7+88.93
CONST. 10' COMB. INLET
W/10 L.F. CONC. CURB (EACH SIDE)
T.C. 533.93
F.L. 529.43

BENCHMARK:
"□" cut on top of curb, center of inlet on the Northwest side of Rockwall Pkwy. approx. 140' Northeast of Woodcreek Dr.
ELEVATION = 527.25



FILE: 9702WNF.DGN
REF FILE: 9702AL.DGN
VIEW:
DATE:

PF:



The seal appearing on this document was authorized by Warren L. Corwin, P.E. 57875, on January 15, 1998

AS-BUILT JULY 1999
INFORMATION PROVIDED BY CONTRACTORS
(NOT FIELD VERIFIED)

NO.	REVISIONS	BY	DATE

CORWIN ENGINEERING, INC.
8131 LBJ FREEWAY, SUITE 333
DALLAS, TEXAS 75251 (972) 480-0305

DEVELOPMENT PLANS FOR
LYNDEN PARK ESTATES PHASE IA
ROCKWALL, TEXAS

WEMBLEY WAY
ALLEY 'F'

DRAWN BY CEI	DESIGNED BY CEI	CHECKED BY CEI	SHEET NO. 10 OF 24
JOB NUMBER 9702	DATE JANUARY 1997	SCALE: 1"=4' V 1"=40' H	