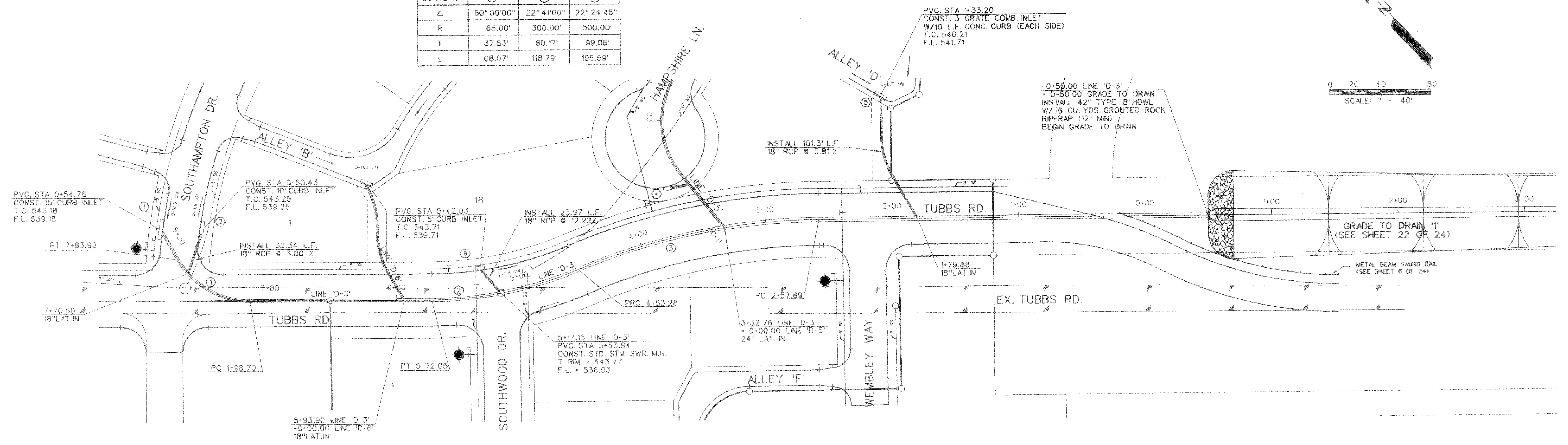
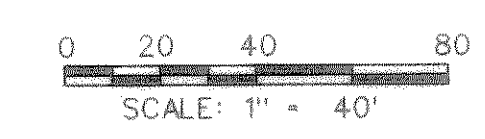
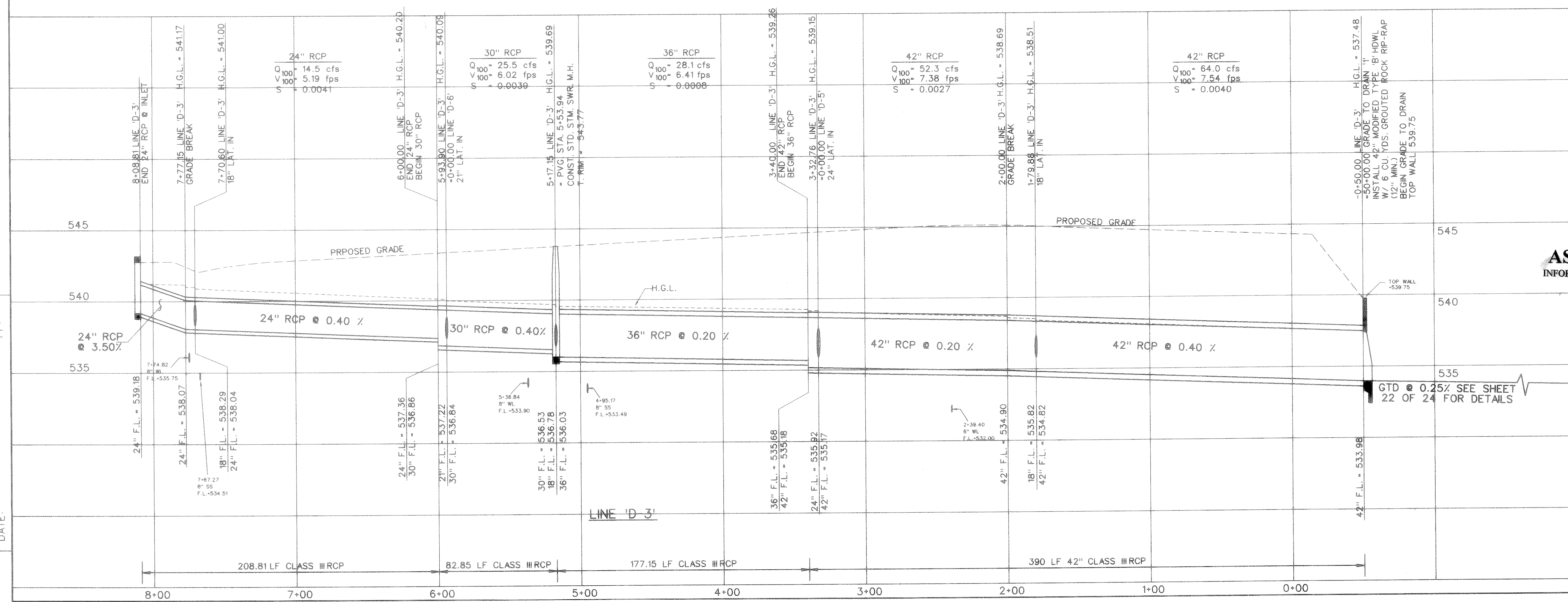


STORM SEWER CURVE DATA			
CURVE NO.	①	②	③
Δ	60° 00' 00"	22° 41' 00"	22° 24' 45"
R	65.00'	300.00'	500.00'
T	37.53'	60.17'	99.06'
L	68.07'	118.79'	195.59'



BENCHMARKS:  
 "□" cut on top of curb, center of inlet on the Northwest side of Rockwall Pkwy, approx. 140' Northeast of Woodcreek Dr.  
 ELEVATION = 527.25



**AS-BUILT JULY 1999**  
 INFORMATION PROVIDED BY CONTRACTORS  
 (NOT FIELD VERIFIED)

STATE OF TEXAS  
 WARREN L. CORWIN  
 57875  
 REGISTERED PROFESSIONAL ENGINEER  
 10-2-98  
 The seal appearing on this document was authorized by Warren L. Corwin, P.E. 57875, on October 2, 1998.

2	ADDED GROUDED RIP-RAP	PJB	10-2-98
1	REVISED HEADWALL	PJB	1-14-98
NO.	REVISIONS	BY	DATE

**CORWIN ENGINEERING, INC.**  
 8131 LBJ FREEWAY, SUITE 333  
 DALLAS, TEXAS 75251 (972) 480-0305

DEVELOPMENT PLANS FOR  
**LYNDEN PARK ESTATES PHASE IA**  
 ROCKWALL, TEXAS

STORM SEWER PLAN AND PROFILE  
 LINE 'D-3'

DRAWN BY FWB	DESIGNED BY FWB	CHECKED BY FWB	SHEET NO. 20 OF 24
JOB NUMBER 9702	DATE JUNE, 1997	SCALE: 1"=4' V 1"=40' H	

FILE: 9702SD3.DGN  
 REF FILE:  
 VIEW:  
 DATE: