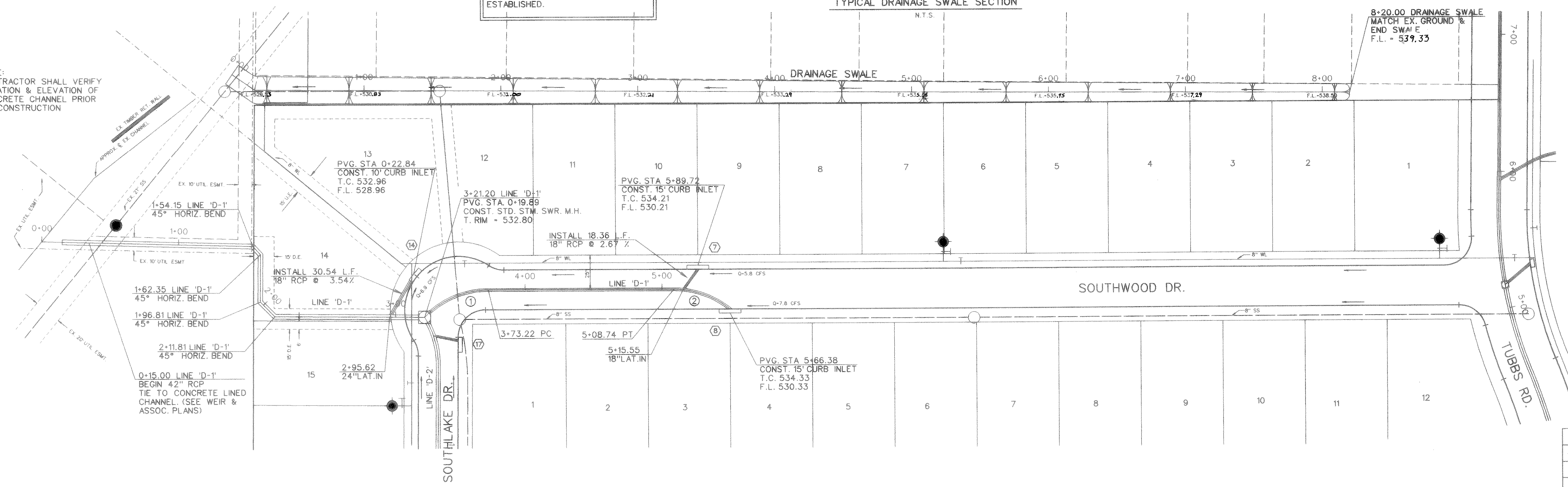


BENCHMARKS:
 "□" cut on top of curb, center of inlet on the Northwest side of Rockwall Pkwy. approx. 140' Northeast of Woodcreek Dr.
 ELEVATION = 527.25

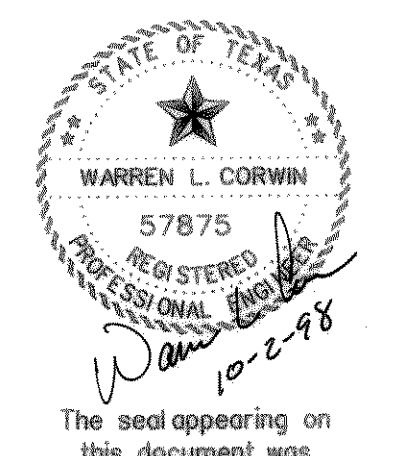
NOTE:
 DRAINAGE SWALE TO BE RE-SEEDED AT THE COMPLETION OF CONST. & MAINTAINED BY THE CONTRACTOR UNTIL A 3" STAND OF GRASS IS ESTABLISHED.

DRAINAGE SWALE
 $Q_{100} = 14.7$ cfs
 $V_{100} = 3.19$ fps
 $D = 1.24'$
 SUB-CRITICAL FLOW

NOTE:
 CONTRACTOR SHALL VERIFY LOCATION & ELEVATION OF CONCRETE CHANNEL PRIOR TO CONSTRUCTION

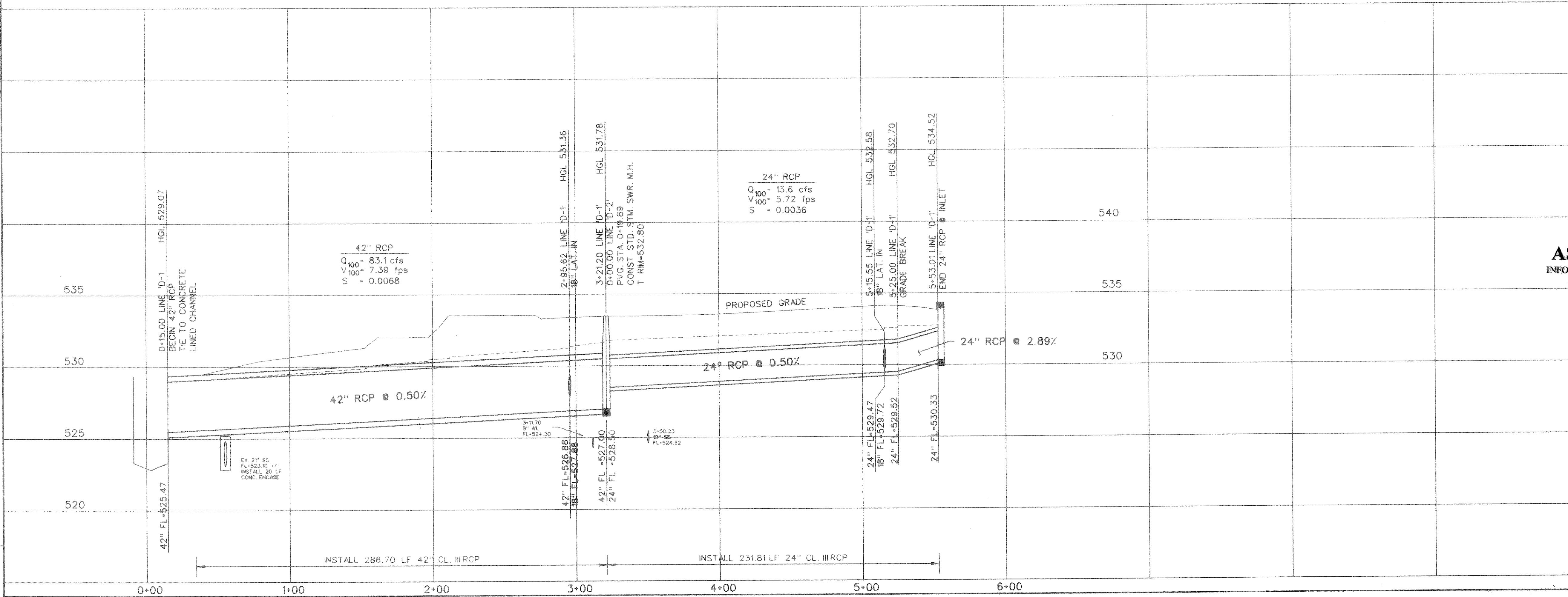


STORM SEWER CURVE DATA		
CURVE NO.	①	②
Δ	45° 51'10"	39° 01'14"
R	65.00'	65.00'
T	27.49'	23.03'
L	52.02'	44.27'



The seal appearing on this document was authorized by Warren L. Corwin, P.E. 57875, on October 2, 1998

AS-BUILT JULY 1999
 INFORMATION PROVIDED BY CONTRACTORS
 (NOT FIELD VERIFIED)



1	PER CITY COMMENTS	PJB	10-2-98
NO.	REVISIONS	BY	DATE
 CORWIN ENGINEERING, INC. 8131 LBJ FREEWAY, SUITE 333 DALLAS, TEXAS 75251 (972) 480-0305			
DEVELOPMENT PLANS FOR LYNDEN PARK ESTATES PHASE IA ROCKWALL, TEXAS			
STORM SEWER PLAN AND PROFILE LINE 'D-1'			
DRAWN BY	DESIGNED BY	CHECKED BY	SHEET NO.
RDS	FWB	FWB	18 of 24
JOB NUMBER	DATE	SCALE: 1"=4' V 1"=40' H	
9702	MAY, 1997		

FILE: 9702sdtb.dgn
 REF FILE:
 VIEW:
 DATE: