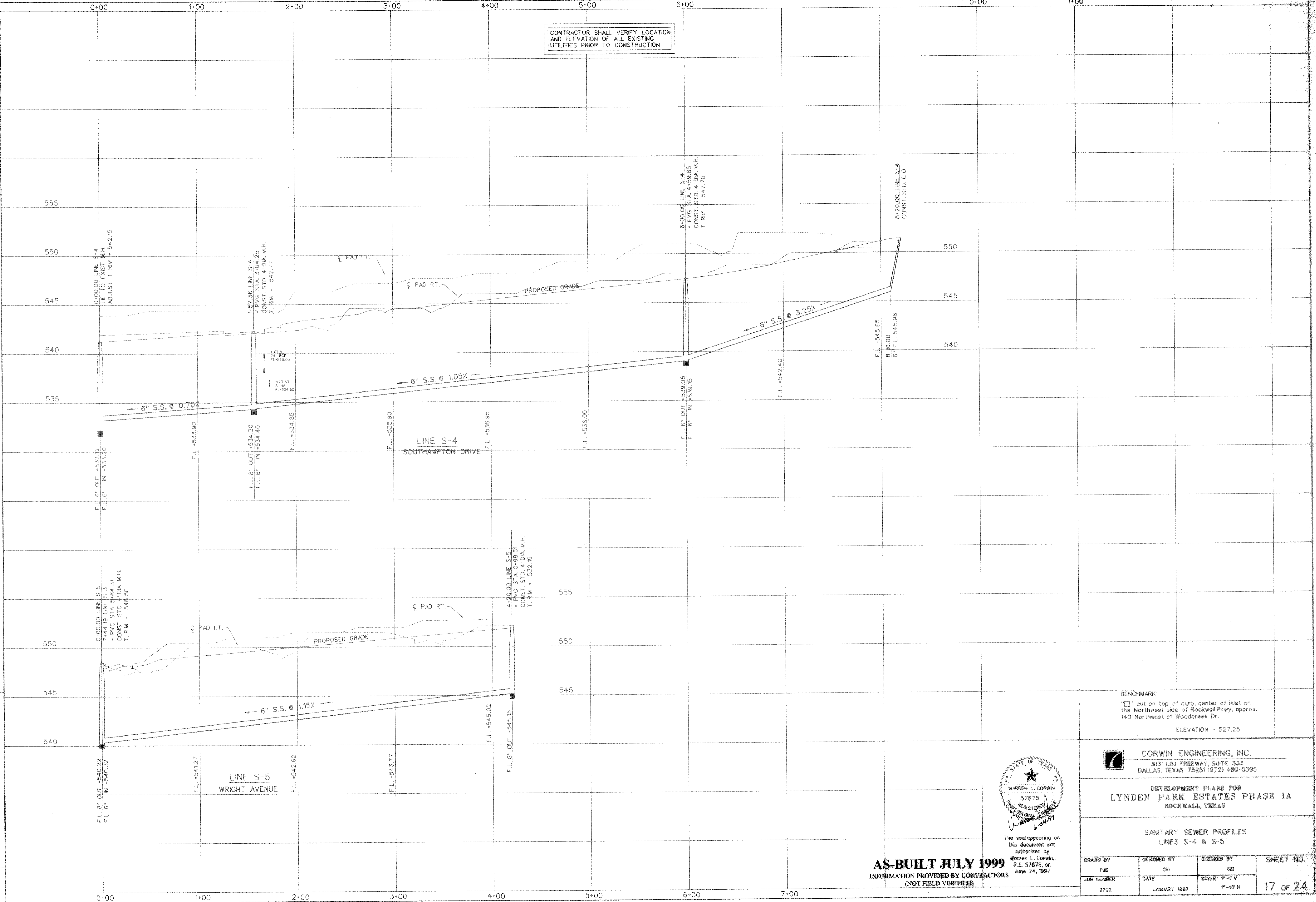


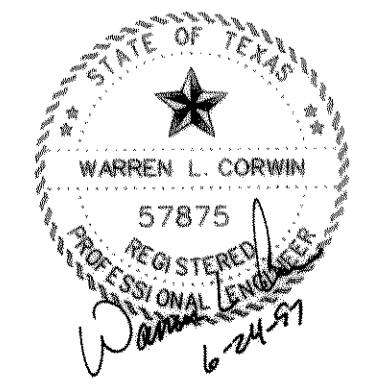
FILE: 9702SAN.DGN
 REF. FILE:
 VIEW:
 DATE:

PF:

CONTRACTOR SHALL VERIFY LOCATION
 AND ELEVATION OF ALL EXISTING
 UTILITIES PRIOR TO CONSTRUCTION



BENCHMARK:
 "□" cut on top of curb, center of inlet on
 the Northwest side of Rockwall Pkwy. approx.
 140' Northeast of Woodcreek Dr.
 ELEVATION = 527.25



The seal appearing on
 this document was
 authorized by
 Warren L. Corwin,
 P.E. 57875, on
 June 24, 1997

AS-BUILT JULY 1999
 INFORMATION PROVIDED BY CONTRACTORS
 (NOT FIELD VERIFIED)

CORWIN ENGINEERING, INC.
 8131 LBJ FREEWAY, SUITE 333
 DALLAS, TEXAS 75251 (972) 480-0305

DEVELOPMENT PLANS FOR
LYNDEN PARK ESTATES PHASE IA
 ROCKWALL, TEXAS

SANITARY SEWER PROFILES
 LINES S-4 & S-5

DRAWN BY PJB	DESIGNED BY CEI	CHECKED BY CEI	SHEET NO. 17 OF 24
JOB NUMBER 9702	DATE JANUARY 1997	SCALE: 1"=4' V 1"=40' H	