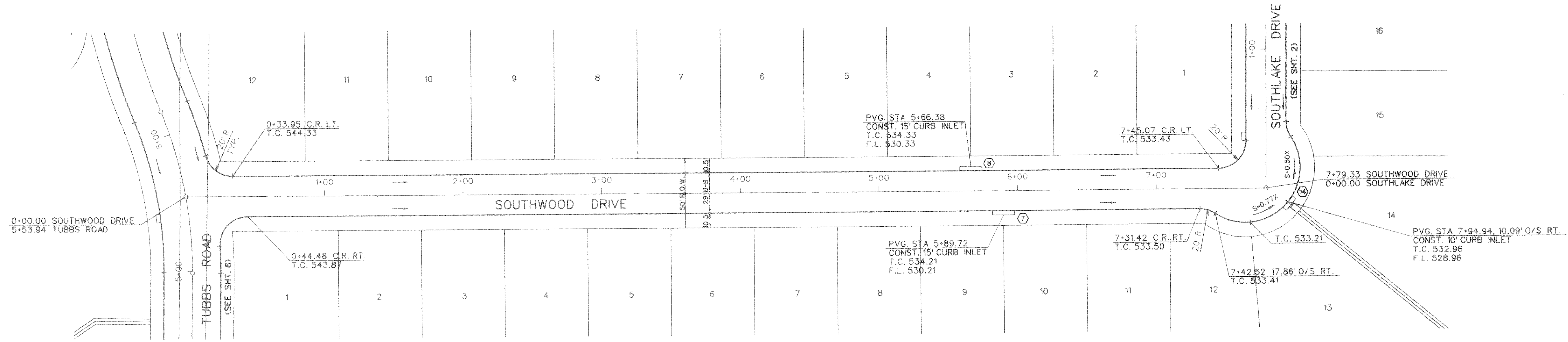
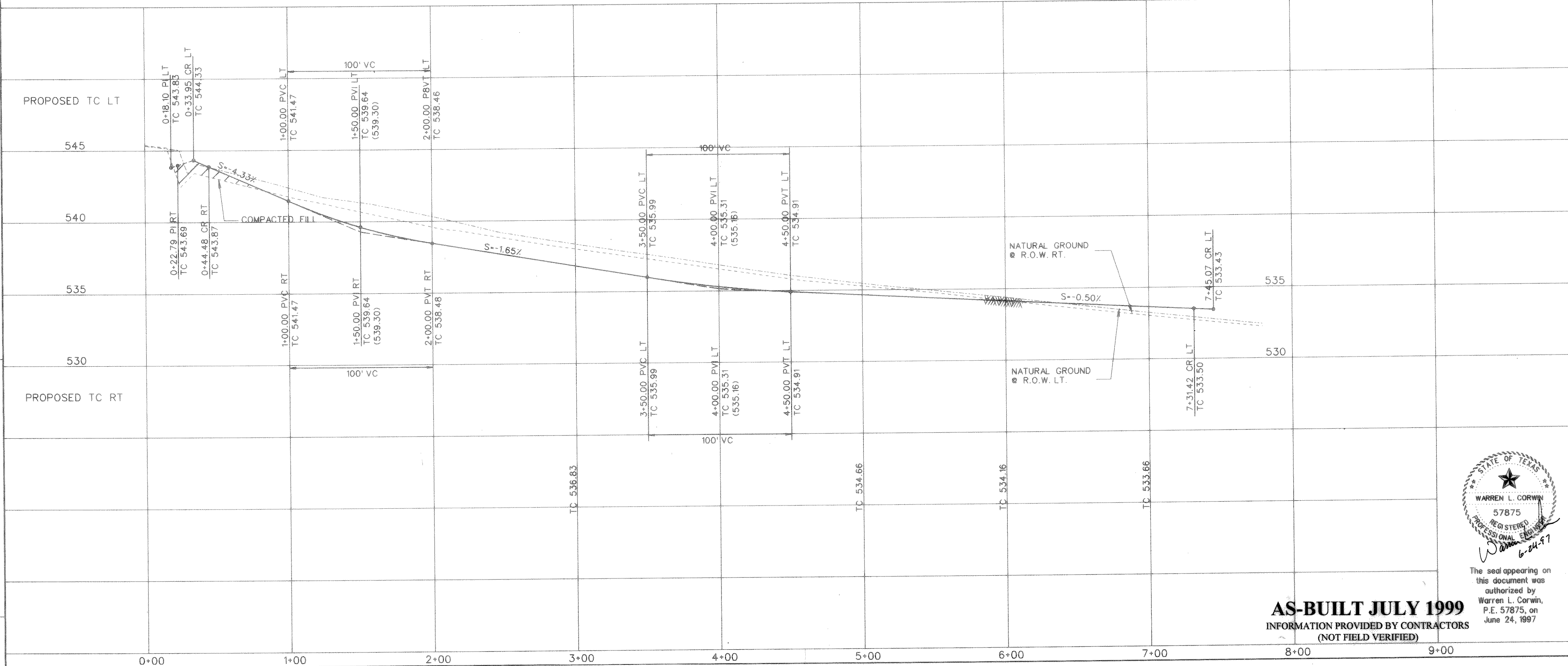
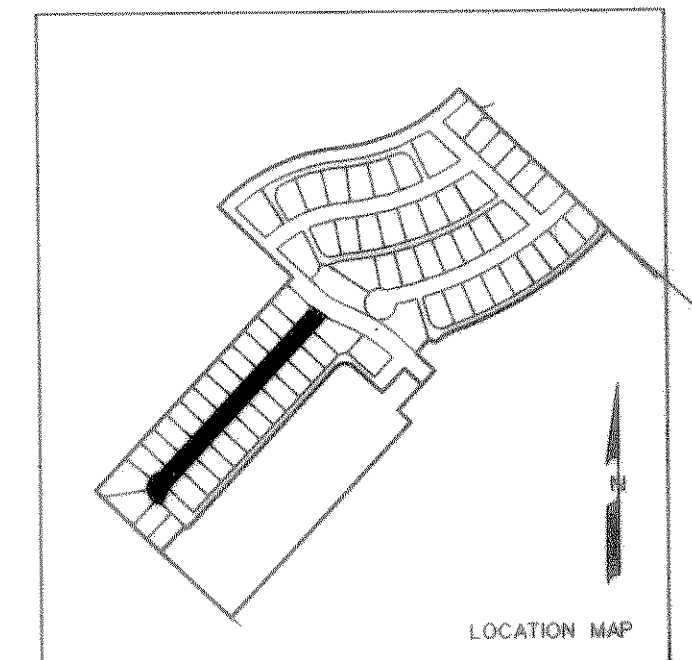


0 20 40 80
SCALE: 1" = 40'

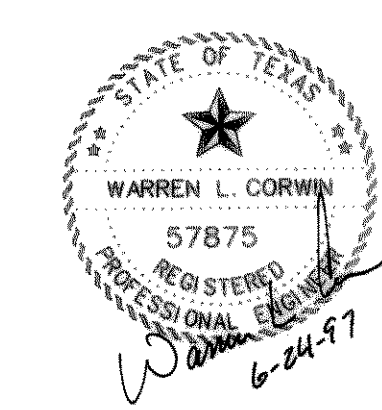


BENCHMARK:
"□" cut on top of curb, center of inlet on the Northwest side of Rockwall Pkwy approx. 140' Northeast of Woodcreek Dr.
ELEVATION - 527.25



PF:
FILE: 9702WOOD.DGN
REF. FILE: 9702AL.DGN
VIEW:
DATE:

1	CHANGE INLET 14 LOCATION	PJB	6-23-97
NO.	REVISIONS	BY	DATE



The seal appearing on this document was authorized by Warren L. Corwin, P.E. 57875, on June 24, 1997

CORWIN ENGINEERING, INC.
8131 LBJ FREEWAY, SUITE 333
DALLAS, TEXAS 75251 (972) 480-0305

DEVELOPMENT PLANS FOR
LYNDEN PARK ESTATES PHASE IA
ROCKWALL, TEXAS

SOUTHWOOD DRIVE
ALLEY 'F'

AS-BUILT JULY 1999
INFORMATION PROVIDED BY CONTRACTORS
(NOT FIELD VERIFIED)

DRAWN BY CEI	DESIGNED BY CEI	CHECKED BY CEI	SHEET NO. 11 of 24
JOB NUMBER 9702	DATE JANUARY 1997	SCALE: 1"=4' V 1"=40' H	