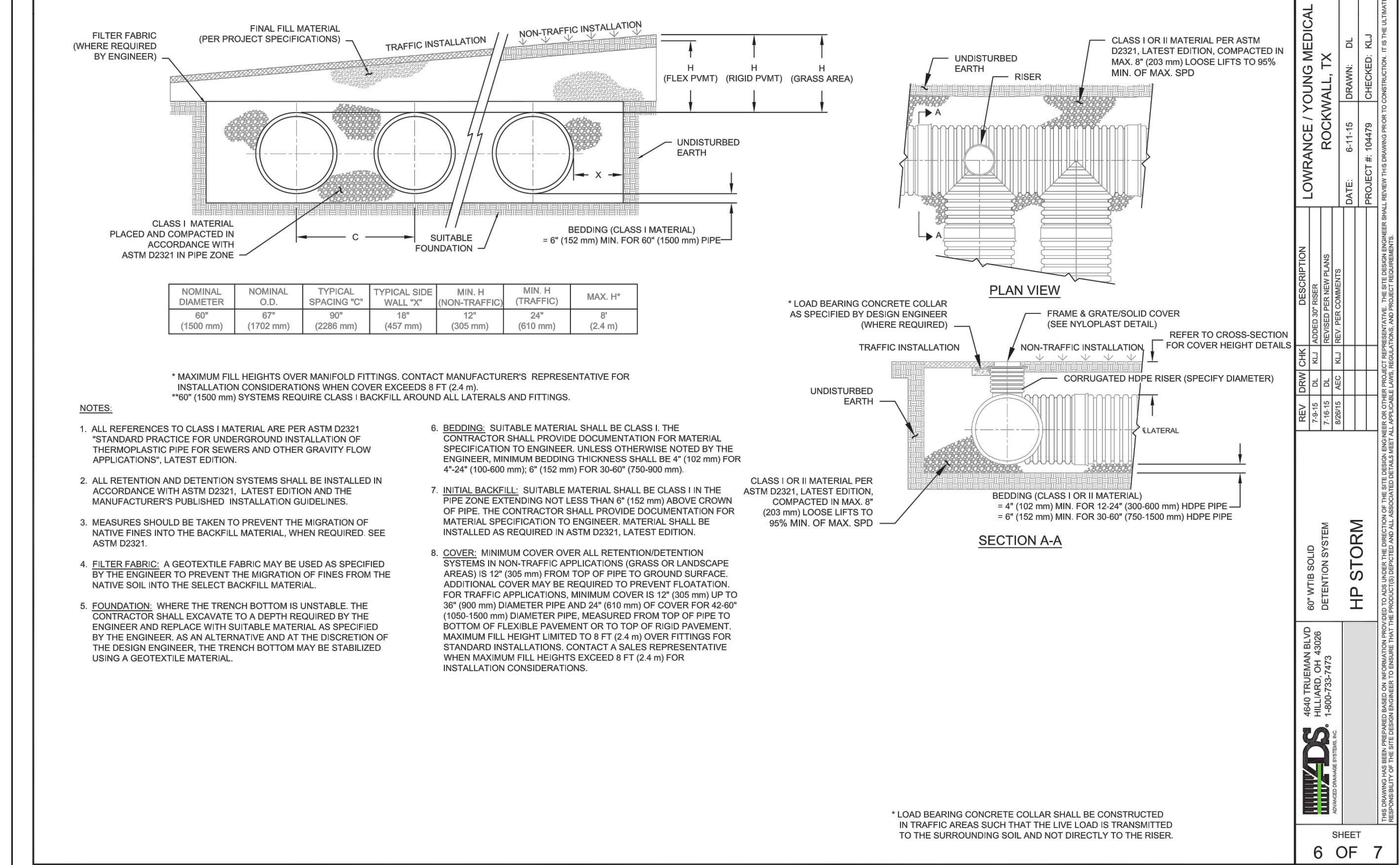
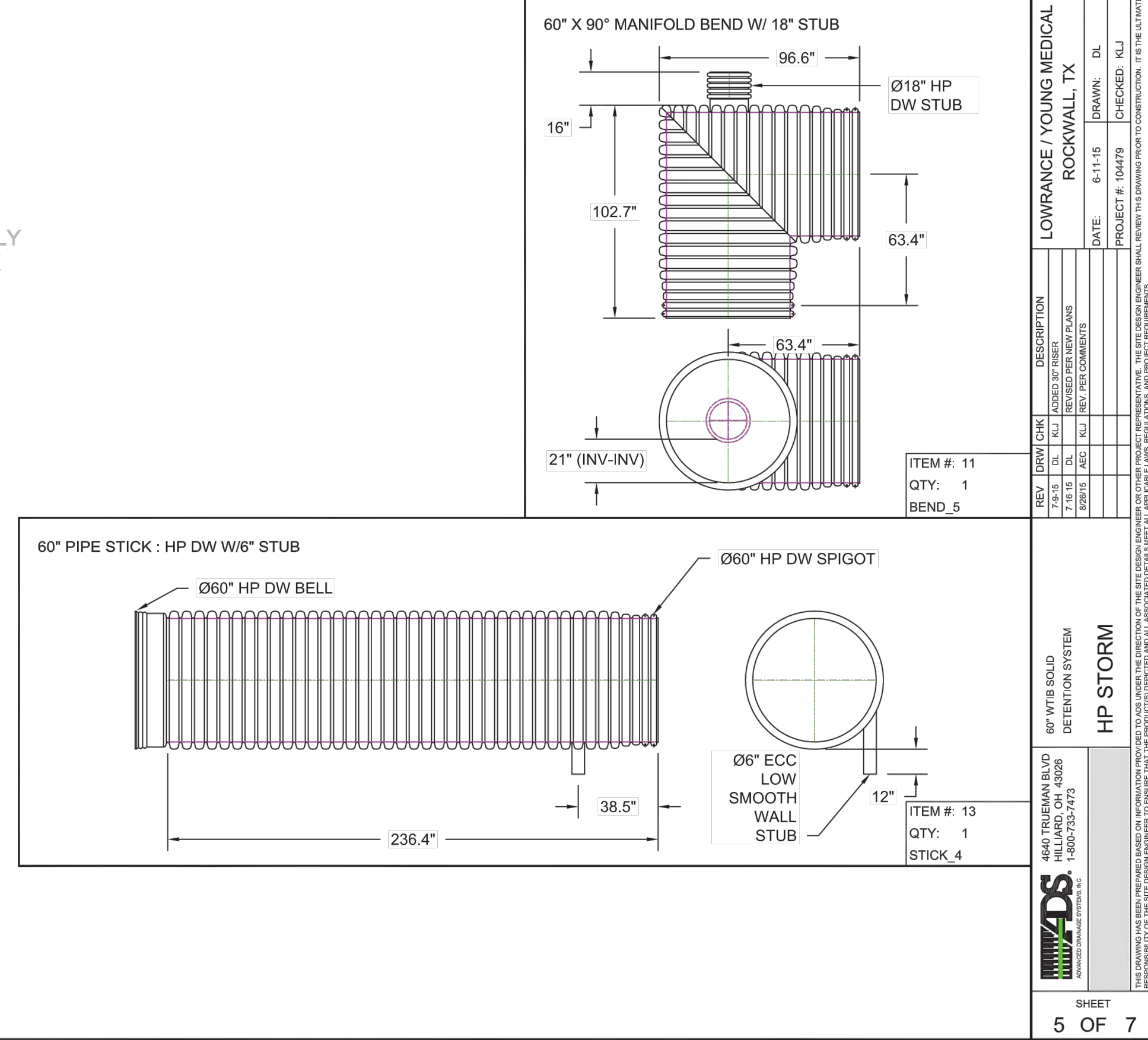
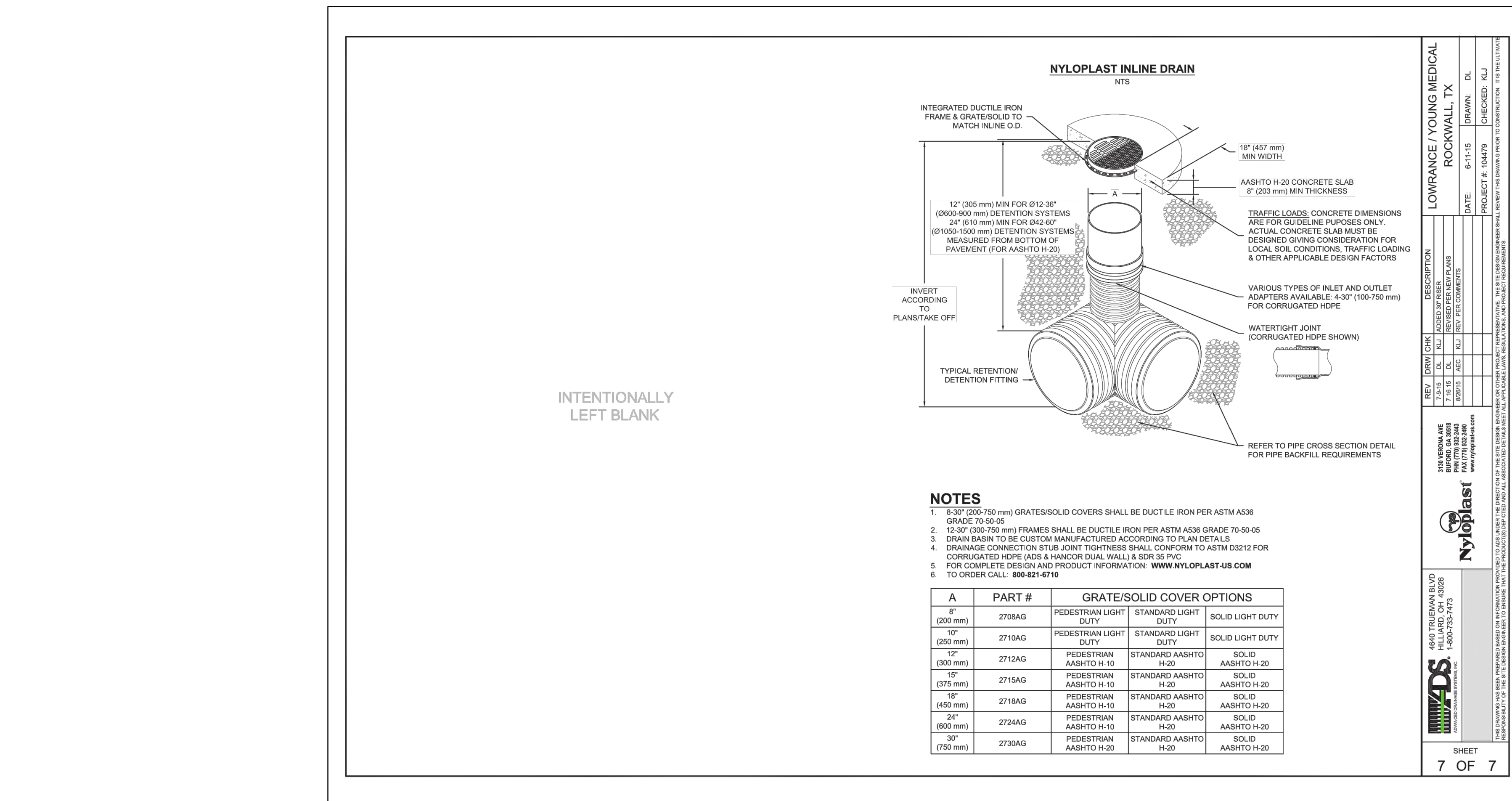


INTENTIONALLY LEFT BLANK



INTENTIONALLY LEFT BLANK



INTENTIONALLY LEFT BLANK

Revision	Date	Description

Owner:
LOWDENT, LLC.
17393 Adams Trail • Forney, TX 75126 • (214) 869-7181
HALL AND LEE LAND COMPANY, LLC.
217 Rush Creek • Heath, TX 75032 • (972) 816-2904

LOWRANCE / YOUNG MEDICAL
MEDICAL OFFICE BUILDINGS
Rockwall, Texas

~ Civil Engineer ~
F.C. CUNY CORPORATION
#2 Horizon Court • Heath, Texas 75032 • (469) 402-7700
Texas Registered Engineering Firm F-7449

7/28/2016

STATE OF TEXAS
COMMISSION ON EXAMINERS
106317
LICENSED PROFESSIONAL ENGINEER

Drawn By: F.C. CUNY
Checked By: F.C. CUNY
Date: 04/15
Project No.: -
Sheet Title: Detention Pond Plan
Scale: -
Sheet No.: 8c of 9