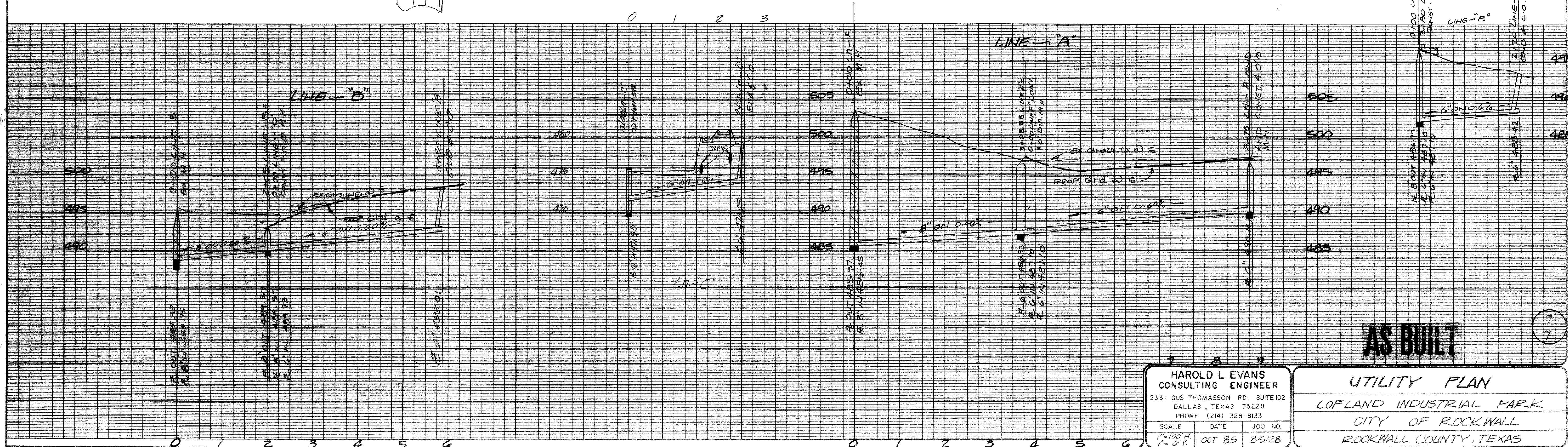
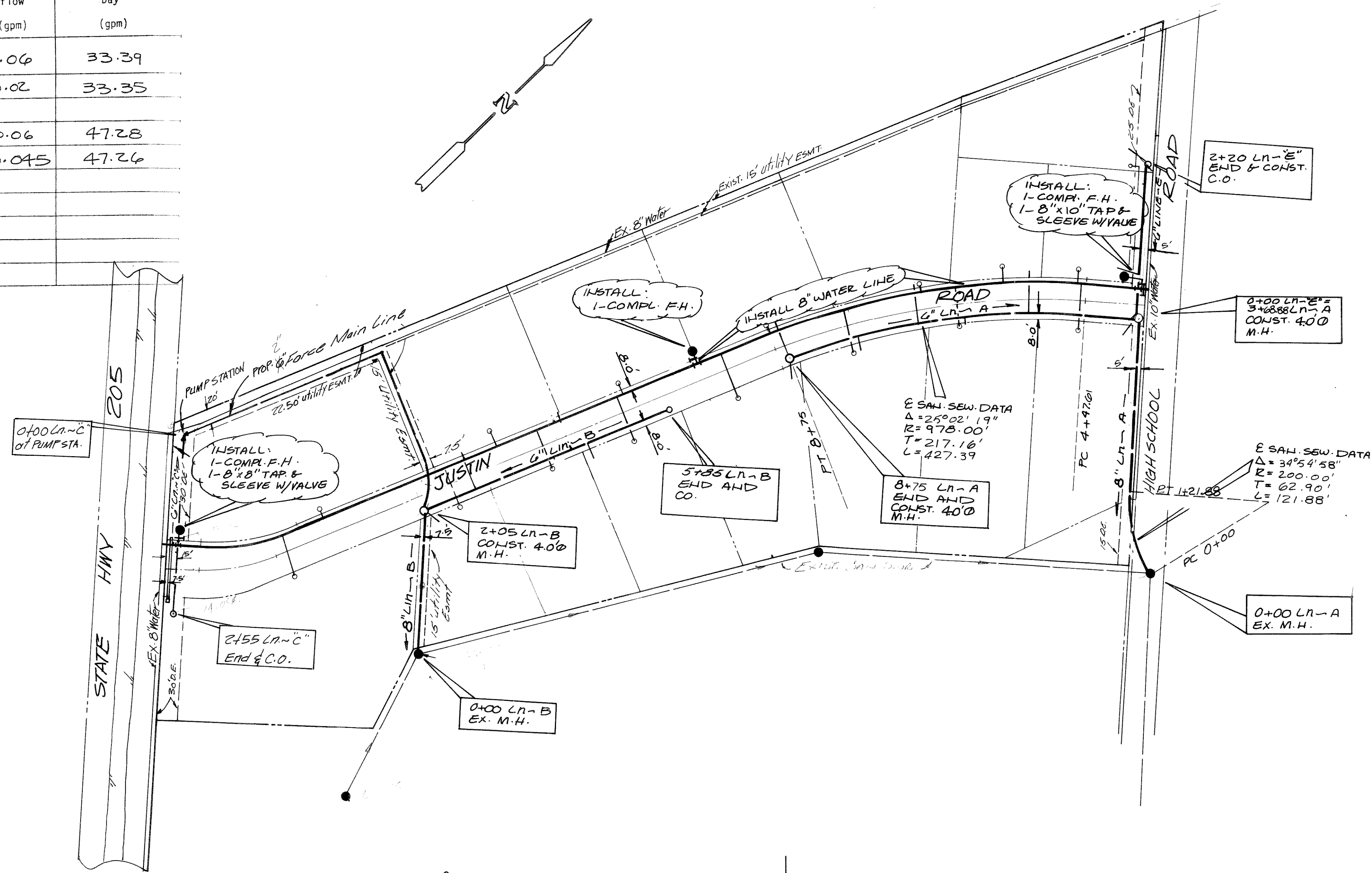


**SANITARY SEWER SYSTEM SUMMARY**

MANHOLE		RESIDENTIAL FLOW		Commercial or Industrial Point Source Flow		Peak Infiltration/Inflow	Total Design Flow Maximum Wet-Weather Day	
FROM	TO	CUMULATIVE POPULATION	AVERAGE DRY-DAY FLOW (gpm)	MAXIMUM DRY-DAY FLOW (gpm)	Units*	Average Flow (gpm)	(gpm)	
7+05 LN-A	2+05 LN-A	6.10 AC 24 PEOPLE			6.10 AC	33.33	0.06	33.39
2+05 LN-A	0+00 LN-A	6.10 AC 24 PEOPLE			6.10 AC	33.33	0.02	33.35
8+80 LN-B	3+80 LN-B	8.5 AC 34 PEOPLE			8.5 AC	47.22	0.06	47.28
3+80 LN-B	0+00 LN-B	8.5 AC 34 PEOPLE			8.5 AC	47.22	0.045	47.26

\* Designate base measurement from which flow is calculated.  
BASE ON 4 PEOPLE PER AC



**AS BUILT**

<b>HAROLD L. EVANS</b> CONSULTING ENGINEER 2331 GUS THOMASSON RD. SUITE 102 DALLAS, TEXAS 75228 PHONE (214) 328-8133			<b>UTILITY PLAN</b> LOFLAND INDUSTRIAL PARK CITY OF ROCKWALL ROCKWALL COUNTY, TEXAS		
SCALE 1" = 100' H 1" = 0' V	DATE OCT 85	JOB NO. 85128			