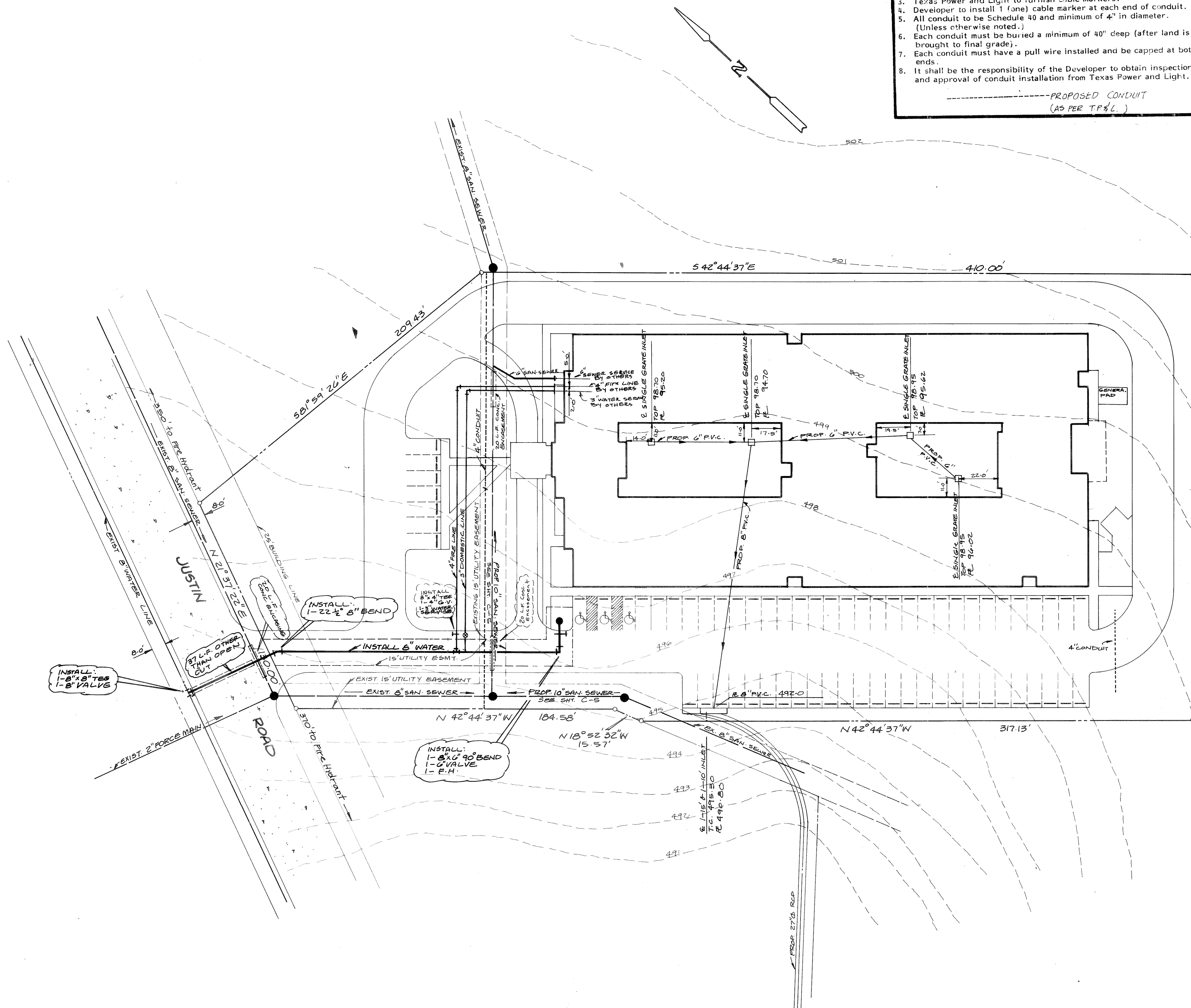


1. All necessary conduit installations shown on print.
2. Developer to furnish and install all conduit as shown on print.
3. Texas Power and Light to furnish cable markers.
4. Developer to install 1 (one) cable marker at each end of conduit.
5. All conduit to be Schedule 40 and minimum of 4" in diameter. (Unless otherwise noted.)
6. Each conduit must be buried a minimum of 40" deep (after land is brought to final grade).
7. Each conduit must have a pull wire installed and be capped at both ends.
8. It shall be the responsibility of the Developer to obtain inspection and approval of conduit installation from Texas Power and Light.

----- PROPOSED CONDUIT
(AS PER T.P.&L.)

General Notes

1. Where water pipelines either cross or otherwise come within 9 feet of a Sanitary Sewer Pipeline the sewer pipeline shall be either cast iron or PVC pipe with a minimum working pressure Class of 150 PSI.
2. It shall be the responsibility of the Contractor to locate and verify all existing utilities prior to the beginning of construction to insure no conflicts between all utility lines.



BENCH MARK
"I" CUT IN DRIVEWAY TO ROCKWALL
MANUFACTURING COMPANY ON STATE
HWY NO. 205 ELEV. 494.20

AS BUILT

WATER SERVICE / ADD CONDUIT 5-11-87 WATER SIZE / REMOVED WATER METER 4-21-87		HAROLD L. EVANS & ASSOCIATES Consulting Engineers P. O. Box 28355 2331 Gus Thomasson Road, Suite 102 Dallas, Texas 75228 (214) 328-8133		SHEET NO. C-4	
REVISION DESCRIPTION 3-20-87		SCALE 1" = 30'	DESIGN A.S.	DRAWN A.S.	JOB NO. 8771
UTILITY PLAN REPLAT PART OF LOT 1 BLOCK A LOPLAND INDUSTRIAL PARK CITY OF ROCKWALL ROCKWALL COUNTY, TEXAS					