

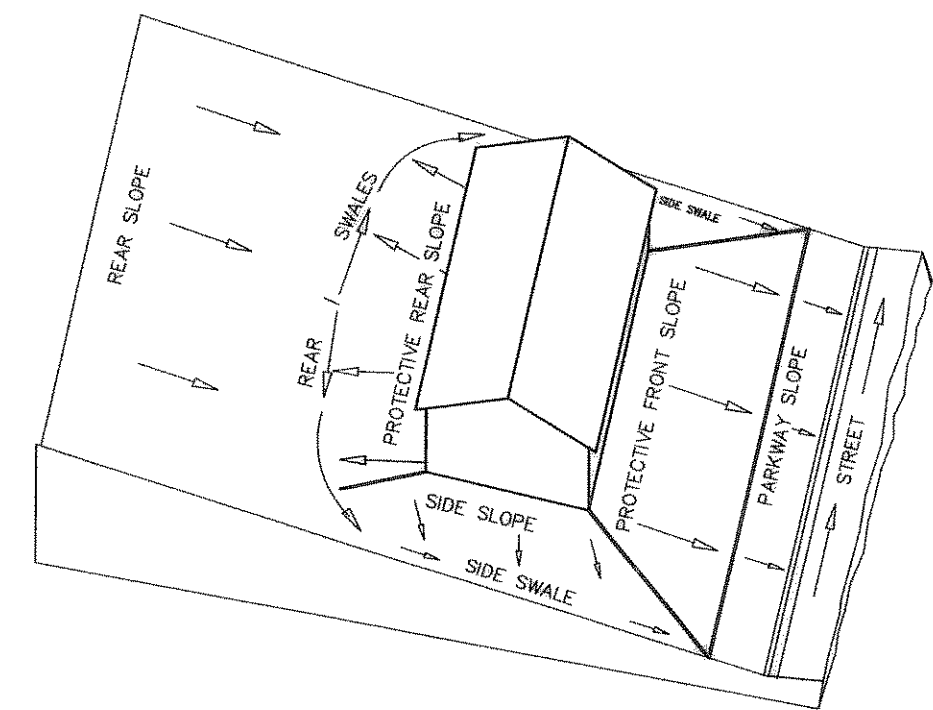
NOTE:
ALL FILL TO BE COMPACTED
WITH SHEEPS FOOT ROLLER

NOTE:
ELEVATIONS ARE TO THE
NEAREST TENTH REFER TO
PAVING PLANS FOR EXACT
PAVING ELEVATIONS

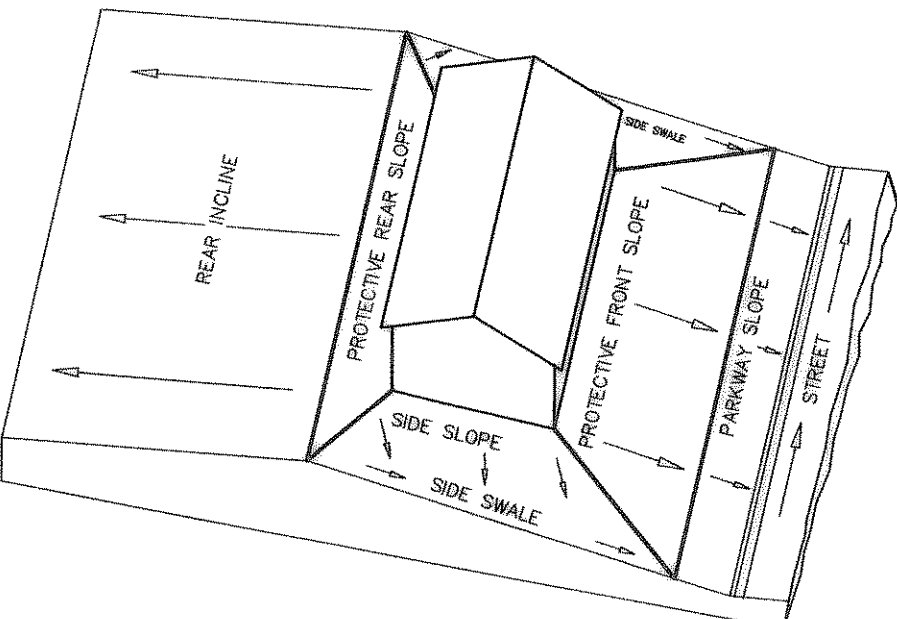
LOFLAND FARMS, LTD.
VOL. 1392, PG. 271

- LEGEND**
- FP = FINISHED PAD
 - FF = FINISHED FLOOR
 - TW = TOP OF WALL
 - BW = BOTTOM OF WALL
 - EW = END OF WALL
 - 570 = EXISTING CONTOURS
 - 580 = PROP. CONTOURS
 - 61'± SPOT GRADE
 - FLOW ARROWS
 - * INDICATES SIDE OF LOT WHERE DRIVEWAY MUST BE LOCATED DUE TO GRADE DIFFERENTIAL
 - D.E. = DRAINAGE EASEMENT

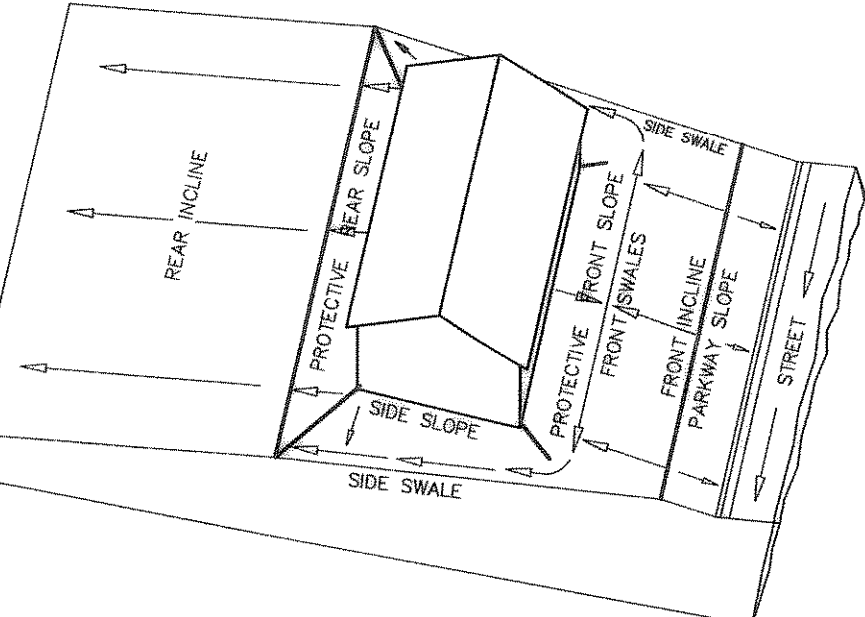
**LOFLAND FARMS
PHASE 5-A**



LOT GRADING TYPE A



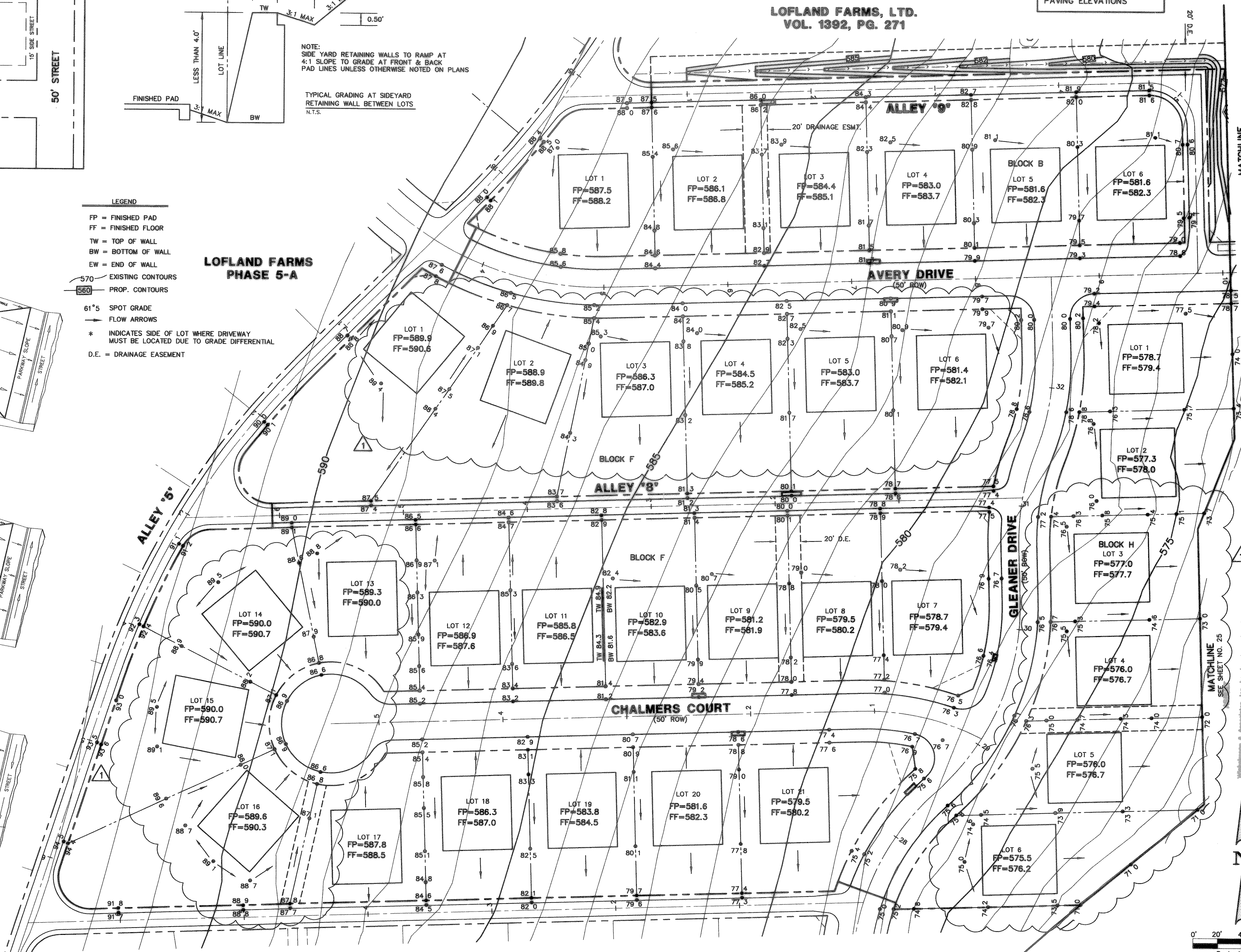
LOT GRADING TYPE B



LOT GRADING TYPE C

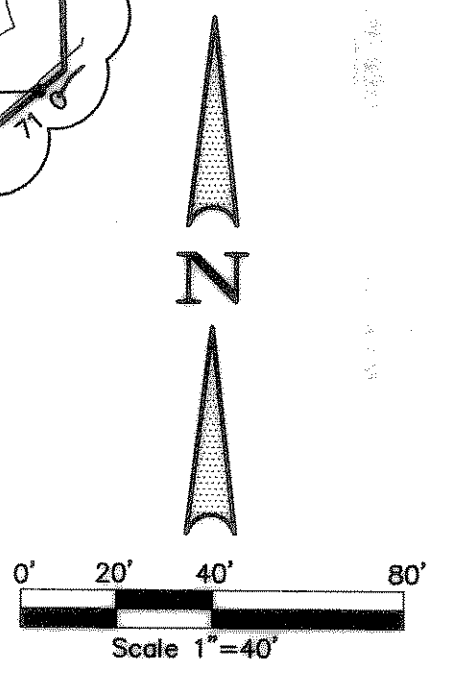
BENCHMARK: ELEV. = 600.69
CITY OF ROCKWALL R-19
BRASS MONUMENT AT THE N/W CORNER OF
SILVERVIEW & DIAMOND WAY, 500' ± SOUTH OF
S.H. 276.

BENCHMARK: ELEV. = 583.56
R.R. SPIKE SET IN THE CENTERLINE OF S.H. 276
3600± WEST OF F.M. 549



MATCHLINE
SEE SHEET NO. 25

MATCHLINE
SEE SHEET NO. 25



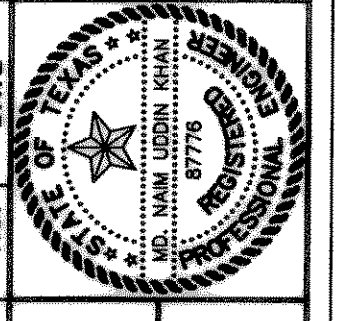
THESE CONSTRUCTION PLANS WERE PREPARED
UNDER THE RESPONSIBLE SUPERVISION OF
MD. NAIM UDDIN KHAN, REGISTERED PROFESSIONAL
ENGINEER NO. 87776

THE SEAL APPEARING ON THIS
DOCUMENT WAS AUTHORIZED BY
MD. NAIM UDDIN KHAN, # 87776

Winklemann & Associates, Inc. hereby states that this
is to the best of our knowledge is "As Built."
No field observations or approved construction
documents have been made as to any construction
by the contractor. Winklemann & Associates, Inc. does not
guarantee the correctness or quality of construction as to
any construction not shown on these plans.
No field observations or approved construction
documents have been made as to any construction
by the contractor. Winklemann & Associates, Inc. does not
guarantee the correctness or quality of construction as to
any construction not shown on these plans.

Scale : 1" = 40' Date : 06/30/2014
Designed By : RB
Drawn By : MS
Checked By : NK
File : 320049BLGrv.DWG
Project No. : 32004.00

| | | | |
|-----|---------|---------------------------------|----------|
| NO. | DATE | REVISION | APPROVAL |
| 1 | 8/24/04 | REVISED PAD AND SPOT ELEVATIONS | NK |



LOFLAND FARMS, PHASE 5B
BAIRD SURVEY ABSTRACT NO. 25
CITY OF ROCKWALL, TEXAS
ROCKWALL COUNTY, TEXAS

**LOT GRADING PLAN
LOFLAND FARMS, PHASE 5-B**

Winklemann & Associates, Inc.
CONSULTING CIVIL ENGINEERS & SURVEYORS
6740 Wilshire Blvd., Suite 100
Dallas, Texas 75220
(972) 261-2889 FAX
www.winklemann.com

SHEET
24
OF
28