

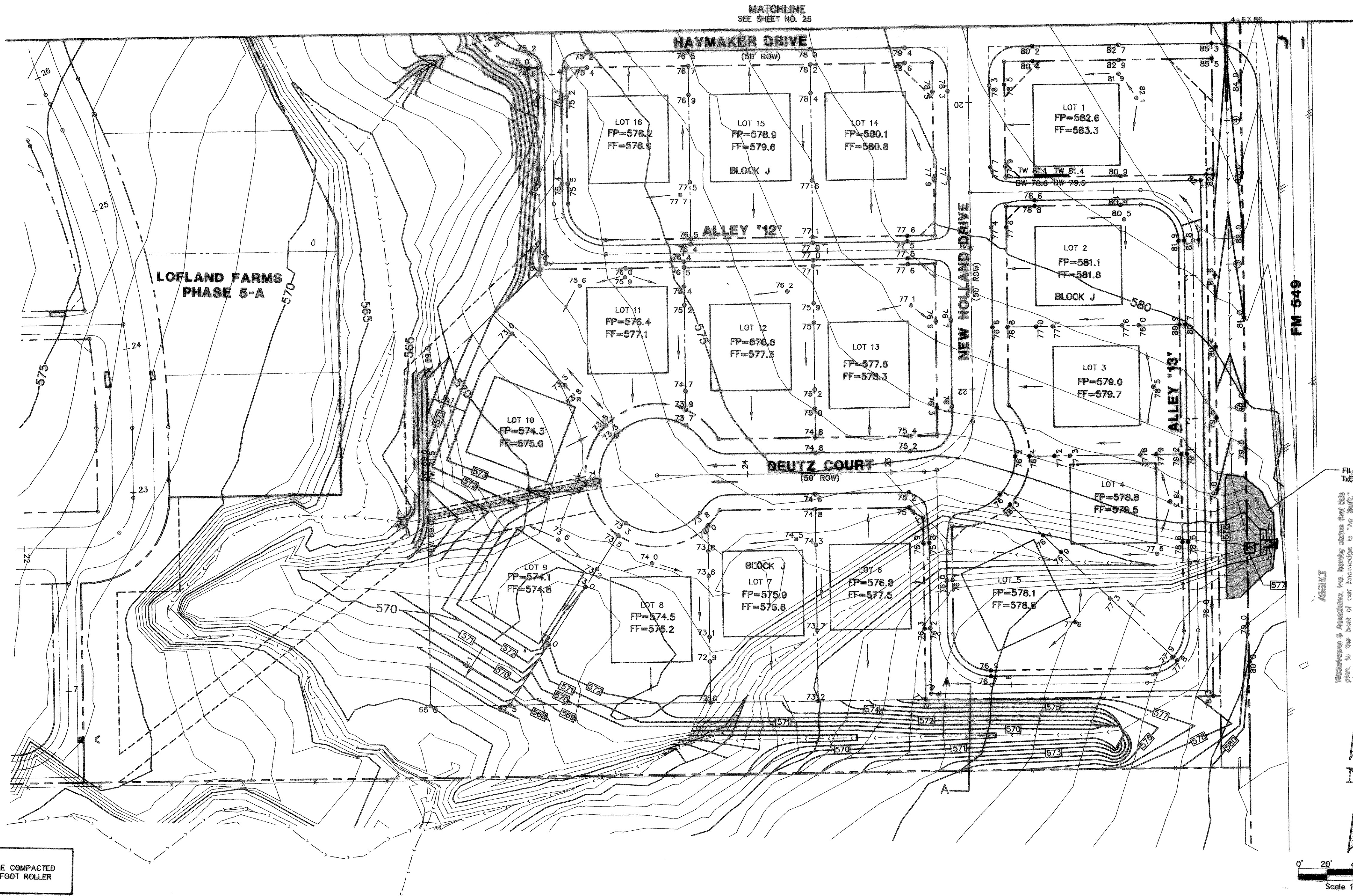
Q100= 175.53+0.98=176.51 c.f.s.
n = 0.035
S = 1.00%
d = 2.77'
V average= 5.63 ft/sec
Q CAP= 722.40 c.f.s.

- LEGEND**
- FP = FINISHED PAD
 - FF = FINISHED FLOOR
 - TW = TOP OF WALL
 - BW = BOTTOM OF WALL
 - EW = END OF WALL
 - 570 - EXISTING CONTOURS
 - 560 - PROP. CONTOURS
 - 61*5 SPOT GRADE
 - FLOW ARROWS
 - * INDICATES SIDE OF LOT WHERE DRIVEWAY MUST BE LOCATED DUE TO GRADE DIFFERENTIAL
 - D.E. = DRAINAGE EASEMENT

BENCHMARK: ELEV. = 600.69
CITY OF ROCKWALL R-19
BRASS MONUMENT AT THE N/W CORNER OF
SILVERVIEW & DIAMOND WAY, 500' ± SOUTH OF
S.H. 276.

BENCHMARK: ELEV. = 583.56
R.R. SPIKE SET IN THE CENTERLINE OF S.H. 276
3600'± WEST OF F.M. 549

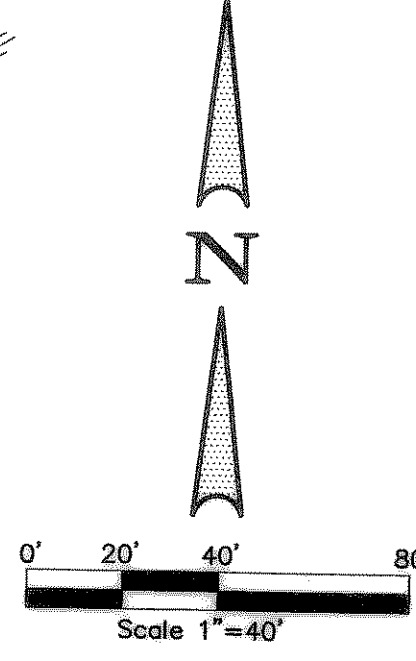
NOTE:
ALL FILL TO BE COMPACTED
WITH SHEEPS FOOT ROLLER



FILL AS PER
TxDOT STANDARDS

ASBILT
Winkelmann & Associates, Inc. hereby states that this plan to the best of our knowledge is "As Built" and that all measurements have been made as per information, inc. does not warrant as to the correctness or quality of construction as per the information shown hereon.

W. Naimuddin Khan
6/20/05



NO.	DATE	REVISION	APPROV.

THESE CONSTRUCTION PLANS WERE PREPARED UNDER THE RESPONSIBLE SUPERVISION OF MD. NAIM UDDIN KHAN, REGISTERED PROFESSIONAL ENGINEER NO. 87776

THE SEAL APPEARING ON THIS DOCUMENT WAS AUTHORIZED BY MD. NAIM UDDIN KHAN, # 87776

W.H. BAIRD SURVEY, ABSTRACT NO. 25
CITY OF ROCKWALL
ROCKWALL COUNTY, TEXAS

D. R. HORTON
4306 MILLER ROAD, SUITE A
ROWLETT, TEXAS 75088

LOFLAND FARMS, PHASE 5B

LOFLAND FARMS, PHASE 6-B

LOT GRADING PLAN
LOFLAND FARMS, PHASE 6-B

Scale: 1"=40'	Date: 06-30-04
Designed By: RB	MS
Drawn By: MS	NK
Checked By: NK	
File: 320045BLG3.DWG	
Project No.: 32004.00	

SHEET
26
OF
28

Winkelmann & Associates, Inc.
CONSULTING CIVIL ENGINEERS & SURVEYORS
8700 Mitchell Road, Suite 100
Dallas, Texas 75245
www.winkelmann.com

