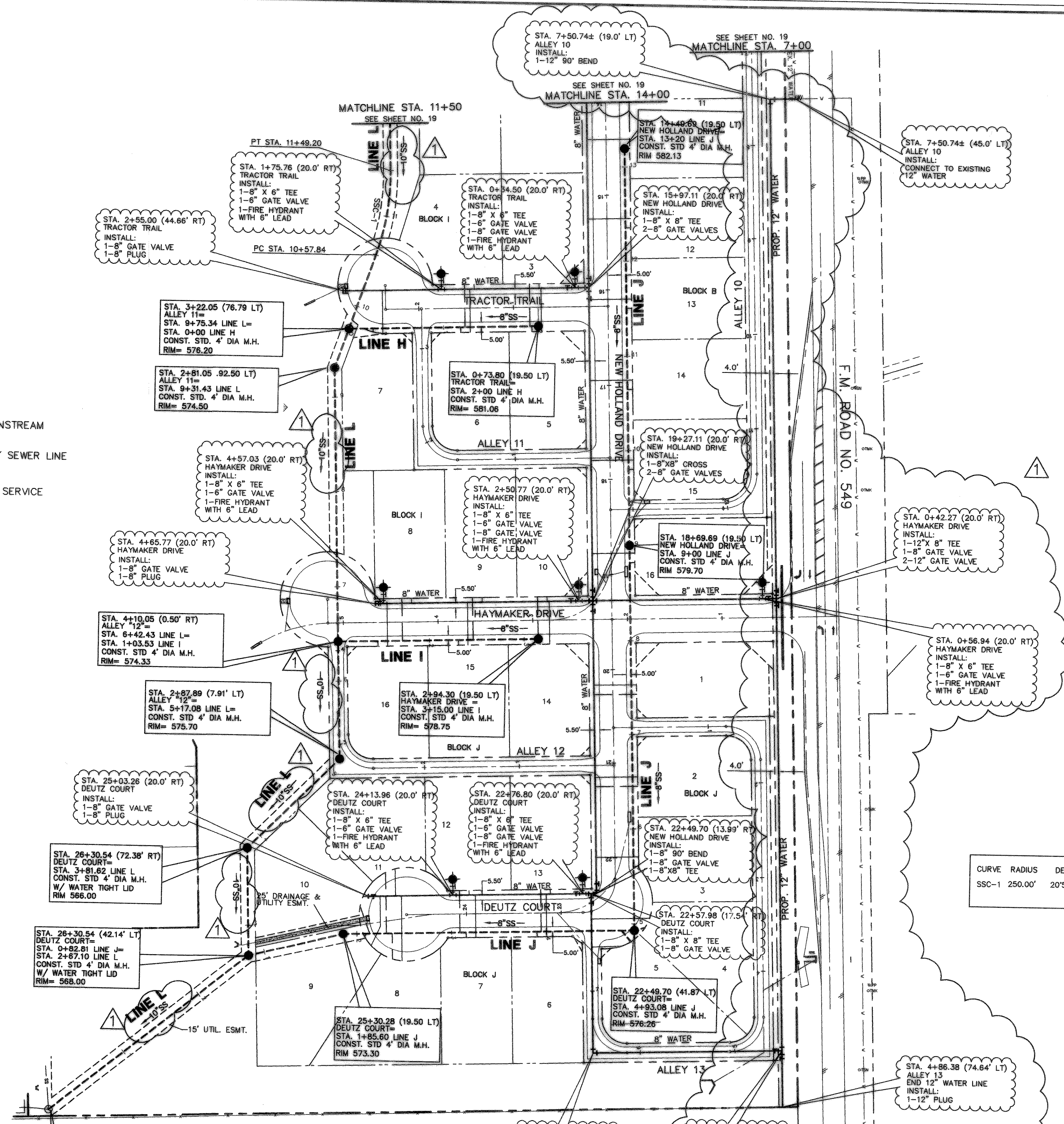


LOT SERVICES DETAIL
N.T.S.

NOTE:
WHERE WATER CONFLICTS WITH STORM SEWER/INLET, BEND AROUND AND SANITARY SEWER SHOULD BE UNDER.

NOTE:
1. WATER LINE LOCATED 5' BACK OF CURB.
2. SANITARY SEWER LOCATED 7' BACK OF CURB.
3. ALL SEWER SERVICES ARE 4".
4. ALL WATER SERVICES ARE 1" POLYETHYLENE.
5. ALL WATER AND SEWER LINE TO BE CLASS 200 C-900 DR 14 PVC.
6. SEWER LINE:
A. COVER ABOVE THE PIPE > 10' USE SDR 26 PVC
B. COVER ABOVE THE PIPE < 10' USE SDR 35 PVC

STA. 0+00 LINE L
CONNECT TO EX. LIFT STATION
FL = 561.10±



SANITARY SEWER CURVE TABLE

CURVE RADIUS	DELTA	TANGENT	LENGTH	CHORD	BEARING
SSC-1 250.00'	20°56'16"	46.19'	91.36'	90.85'	N08°41'49"E

Winkelmann & Associates, Inc. hereby states that this plan, to the best of our knowledge is "As Built." Modifications have been made as per information provided by the contractor. Winkelmann & Associates, Inc. does not certify as to the correctness or quality of construction as no field inspection was performed.
Winkelmann & Associates, Inc. 6/20/05

BENCHMARK: ELEV. = 600.69
CITY OF ROCKWALL R-19
BRASS MONUMENT AT THE N/W CORNER OF
SILVERVIEW & DIAMOND WAY, 500' ± SOUTH OF
S.H. 276.
BENCHMARK: ELEV. = 583.56
R.R. SPIKE SET IN THE CENTERLINE OF S.H. 276
3600± WEST OF F.M. 549

Winkelmann & Associates, Inc.
CONSULTING CIVIL ENGINEERS & SURVEYORS
1000 West Loop West, Suite 100
Rockwall, Texas 75087
(972) 968-7000
www.winkelmann.com

APPROVED: [Signature]
DATE: 7/27/04
REVISION: [None]
N.K.

THESE CONSTRUCTION PLANS WERE PREPARED UNDER THE RESPONSIBLE SUPERVISION OF MD. NAIM UDDIN KHAN, REGISTERED PROFESSIONAL ENGINEER NO. 87776
DATE: 7/27/04
BY: [Signature]

LOFLAND FARMS, PHASE 5B
W.H. BAIRD SURVEY, ABSTRACT NO. 25
CITY OF ROCKWALL,
ROCKWALL COUNTY, TEXAS
D. R. HORTON
4306 MILLER ROAD, SUITE A
ROWLETT, TEXAS 75088

Scale: 1"=60'
Date: 7-27-04
Designed By: NS
Drawn By: MS
Checked By: NK
FILE: 320045BWSZ.DWG
Project No.: 32004.00

SHEET
20
OF
28