

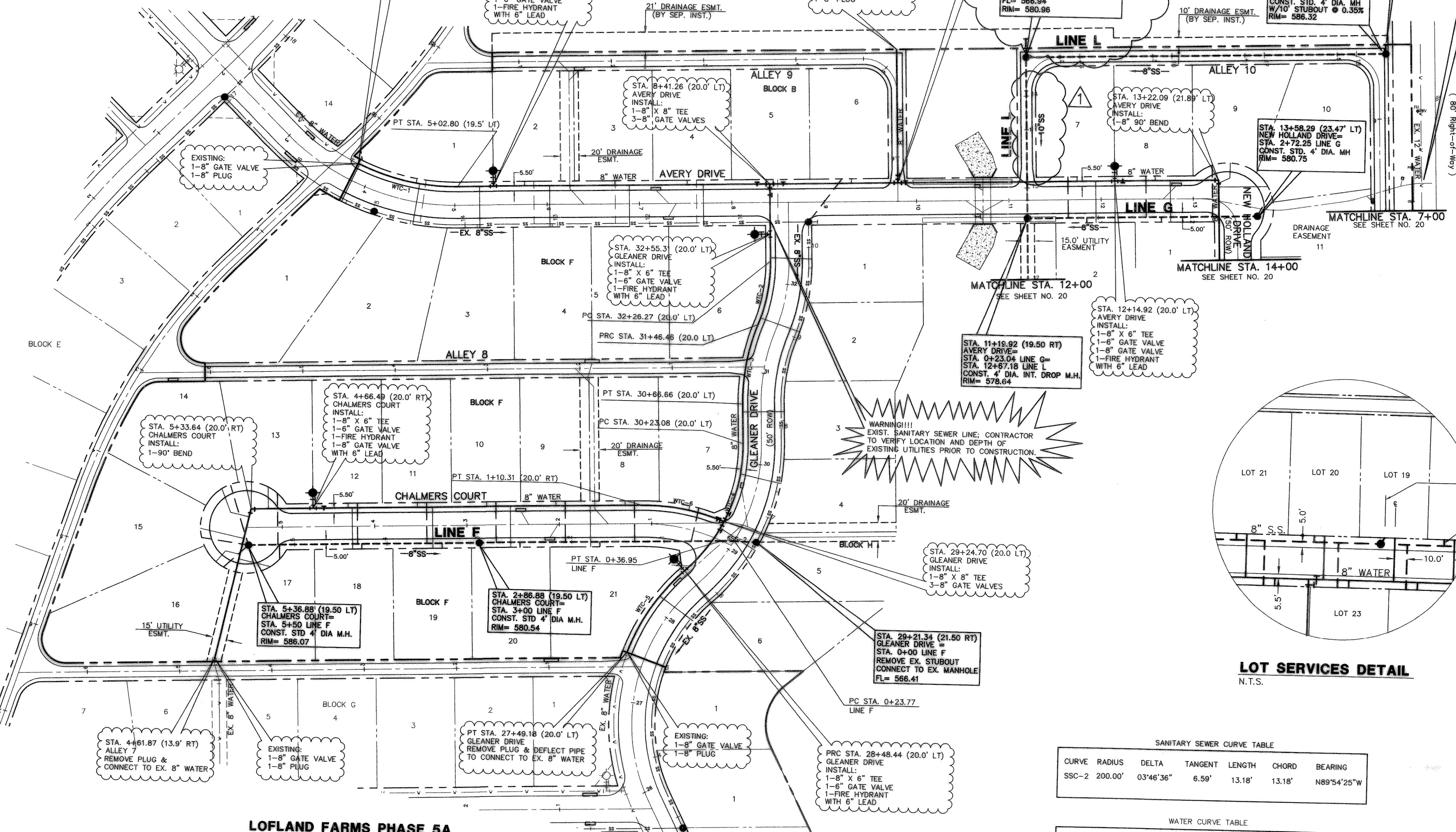
NOTE:
 1. WATER LINE LOCATED 5.5' BACK OF CURB.
 2. SANITARY SEWER LOCATED 5.0' BACK OF CURB.
 3. ALL SEWER SERVICES ARE 4" SDR35.
 4. ALL WATER SERVICES ARE 1" POLYETHYLENE.
 5. ALL WATER LINE TO BE CLASS 200 C-900 SDR14 PVC.
 6. SEWER LINE:
 A. COVER ABOVE THE PIPE > 10' USE SDR 26 PVC
 B. COVER ABOVE THE PIPE < 10' USE SDR 35 PVC

NOTE:
 WHERE WATER CONFLICTS WITH STORM SEWER/ INLET, BEND AROUND AND SANITARY SEWER SHOULD BE UNDER.

NOTE:
 SANITARY SEWER SERVICES ARE TO BE INSTALLED AT THE TIME OF CONSTRUCTION OF PHASE-5A FOR PROPOSED LOTS ON PHASE-5B
 BLOCK B- LOT 1 TO LOT 5 SANITARY SEWER ;
 BLOCK F- LOT 1 TO LOT 6 SANITARY SEWER;
 BLOCK H- LOT 1 TO LOT 6 SANITARY SEWER;

WARNING!!!
 EXIST. WATER LINE. CONTRACTOR TO VERIFY LOCATION AND DEPTH OF EXISTING UTILITIES PRIOR TO CONSTRUCTION.

LOFLAND FARMS PHASE 5A



LOFLAND FARMS PHASE 5A

SANITARY SEWER CURVE TABLE

CURVE	RADIUS	DELTA	TANGENT	LENGTH	CHORD	BEARING
SSC-2	200.00'	03°46'36"	6.59'	13.18'	13.18'	N89°54'25"W

WATER CURVE TABLE

CURVE	RADIUS	DELTA	TANGENT	LENGTH	CHORD	BEARING
WTC-1	230.00'	27°41'49"	56.70'	111.18'	110.10'	S77°55'25"E
WTC-2	180.00'	22°51'40"	36.39'	71.82'	71.34'	S09°39'31"W
WTC-3	220.00'	22°51'40"	44.48'	87.78'	87.20'	S09°39'31"W
WTC-4	180.00'	50°01'33"	83.98'	157.16'	152.22'	S23°14'28"W
WTC-5	220.00'	28°26'25"	55.75'	109.20'	108.08'	S34°02'02"W
WTC-6	220.00'	23°44'35"	46.25'	91.16'	90.52'	S79°55'26"E

Winkelman & Associates, Inc. hereby states that this plan, to the best of our knowledge is "As Built." Modifications from the originally approved construction documents have been made as per information provided by the contractor, Winkelman & Associates, Inc. does not certify as to the correctness or quality of construction as no field inspection was performed.
 Winkelman & Associates, Inc. 6/20/05
 WINKELMAN & ASSOCIATES, INC.

BENCHMARK: ELEV. = 600.69
 CITY OF ROCKWALL R-19 BRASS MONUMENT AT THE N/W CORNER OF SILVERVIEW & DIAMOND WAY. 500' ± SOUTH OF S.H. 276.
 BENCHMARK: ELEV. = 583.56
 R.R. SPIKE SET IN THE CENTERLINE OF S.H. 276 3600± WEST OF F.M. 549

DESIGNED BY: MS	DATE: 7-30-04	REVISION	APPROV.
DRAWN BY: MS			
CHECKED BY: NK			
FILE: 320045BWS/DWG			
PROJECT NO.: 32004.00			

THESE CONSTRUCTION PLANS WERE PREPARED UNDER THE RESPONSIBLE SUPERVISION OF MD. NAIM UDDIN KHAN, REGISTERED PROFESSIONAL ENGINEER NO. 87776

THE SEAL APPEARING ON THIS DOCUMENT WAS AUTHORIZED BY MD. NAIM UDDIN KHAN, # 87776

LOFLAND FARMS, PHASE 5B
 SUBTRACT NO. 25
 CITY OF ROCKWALL, TEXAS
 ROCKWALL COUNTY, TEXAS

D R HORTON
 4306 MILLER ROAD, SUITE A
 ROWLETT, TEXAS 75088

WATER & SANITARY SEWER PLAN
LOFLAND FARMS, PHASE 5B

Scale: 1"=60'
 Date: 7-30-04
 Designed By: MS
 Drawn By: MS
 Checked By: NK
 File: 320045BWS/DWG
 Project No.: 32004.00

SHEET
 19
 OF
 28