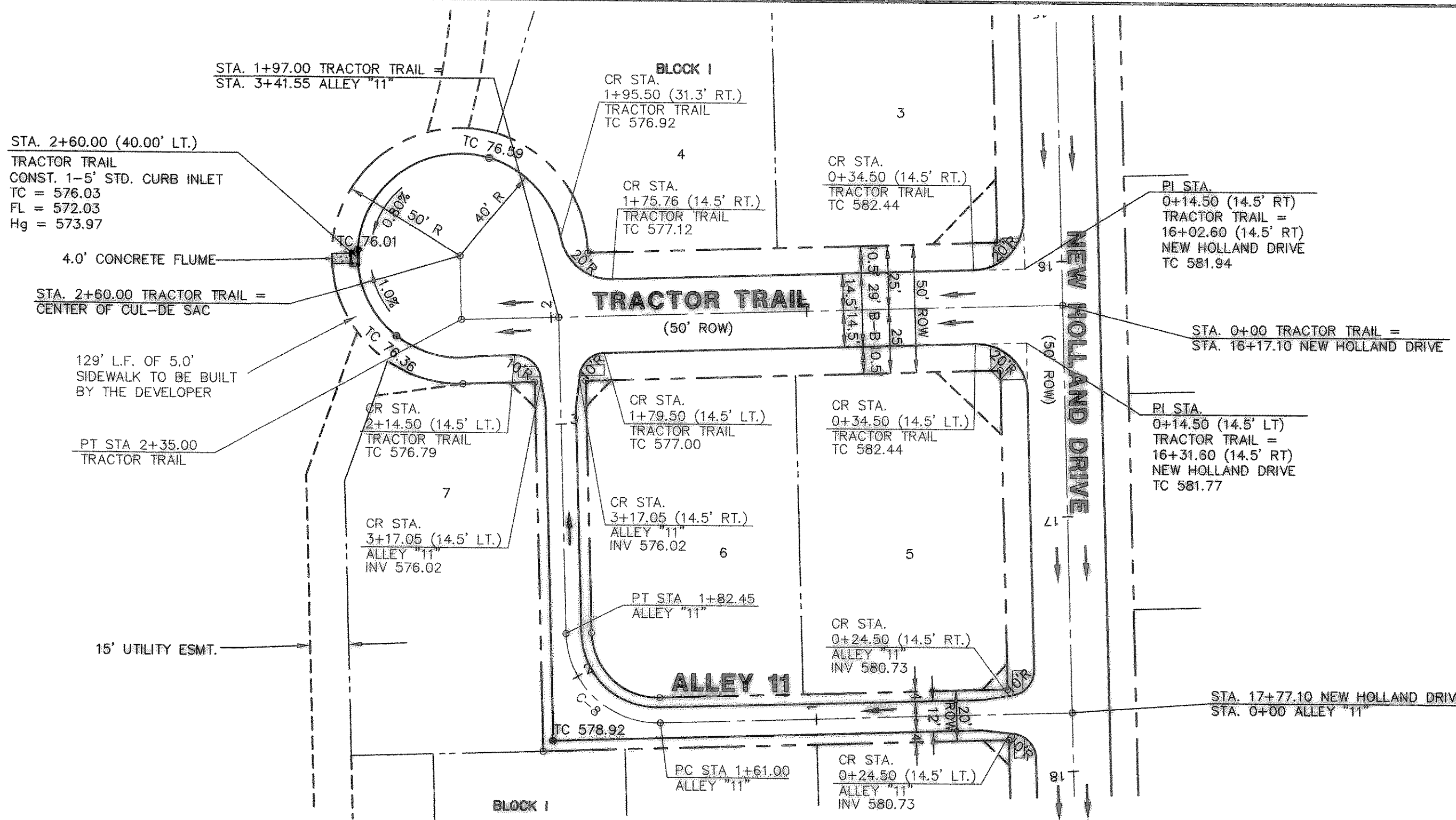


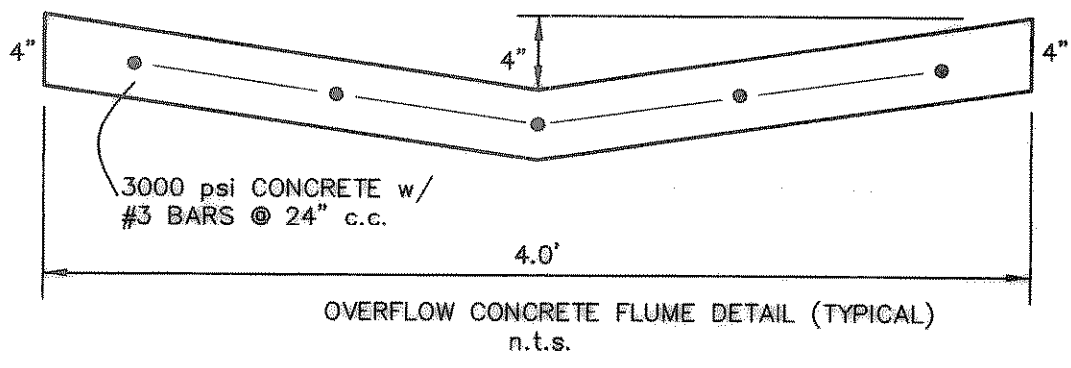
LEGEND

TC	Top of Curb
TP	Top of Pavement
CR	Curve Return
FL	Flow Line
2	Street Station
⏏	Handicap Ramp
PP	Power Pole
WP	Water Valve
TP	Telephone Pedestal
WM	Water Meter
FH	Fire Hydrant
LP	Light Pole
IV	Irrigation Valve
TSN	Traffic Signs
SMMH	Sanitary Sewer Manhole
STMH	Storm Sewer Manhole
WMK	Water Marker
→	Flow line



CURVE REPORT

CURVE	RADIUS	DELTA	TANGENT	LENGTH	CHORD	BEARING
C-8	36.00'	90°00'00"	36.00'	56.55'	50.91'	N46°47'30"W

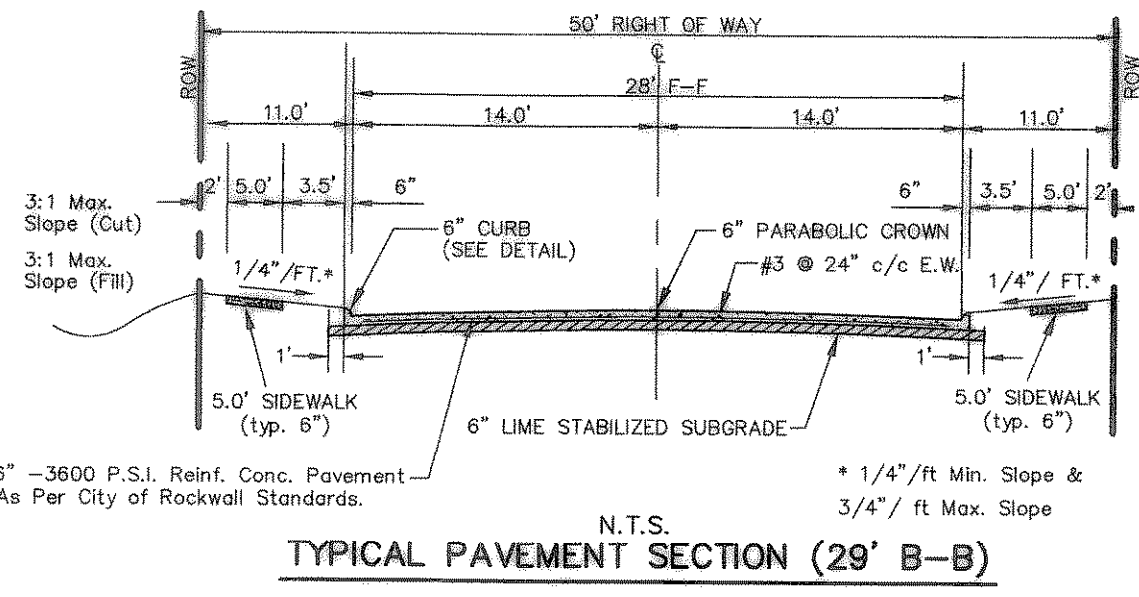
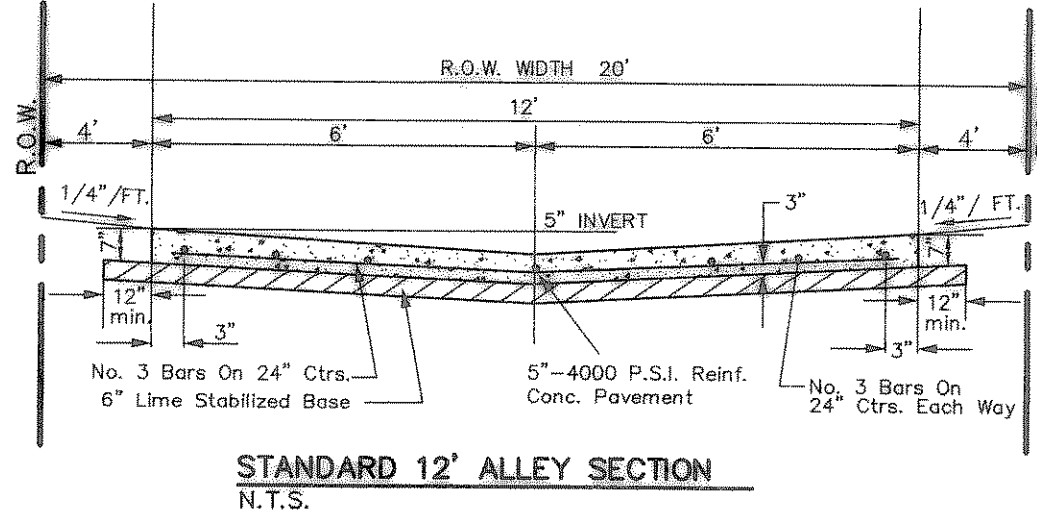
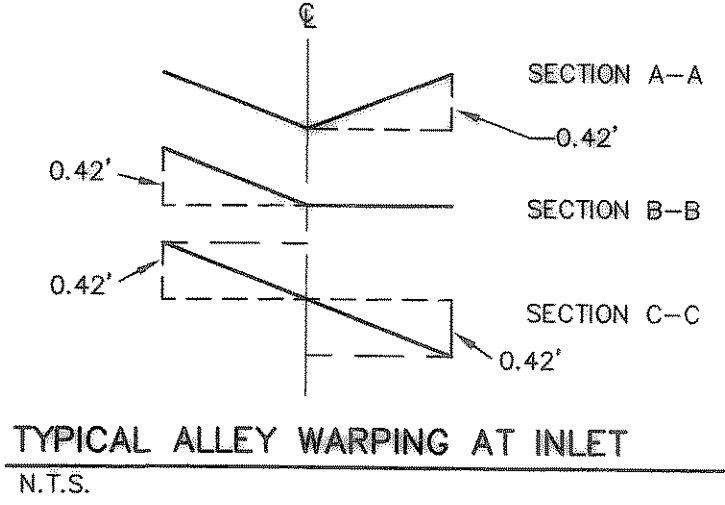
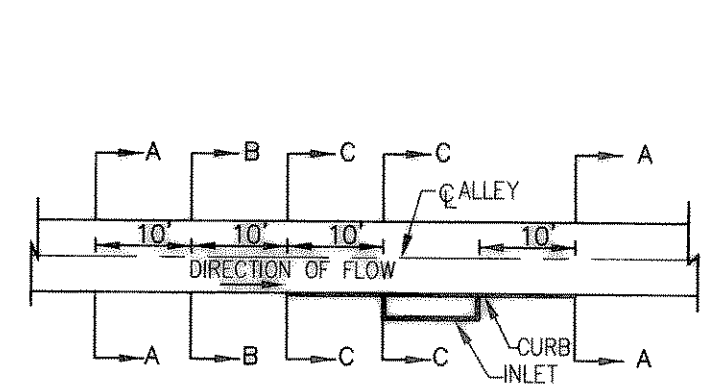


AS BUILT

Winkelmann & Associates, Inc. hereby states that this plan, to the best of our knowledge is "As Built." Modifications from the originally approved construction documents have been made as per information provided by the contractor. Winkelmann & Associates, Inc. does not field inspection was performed.

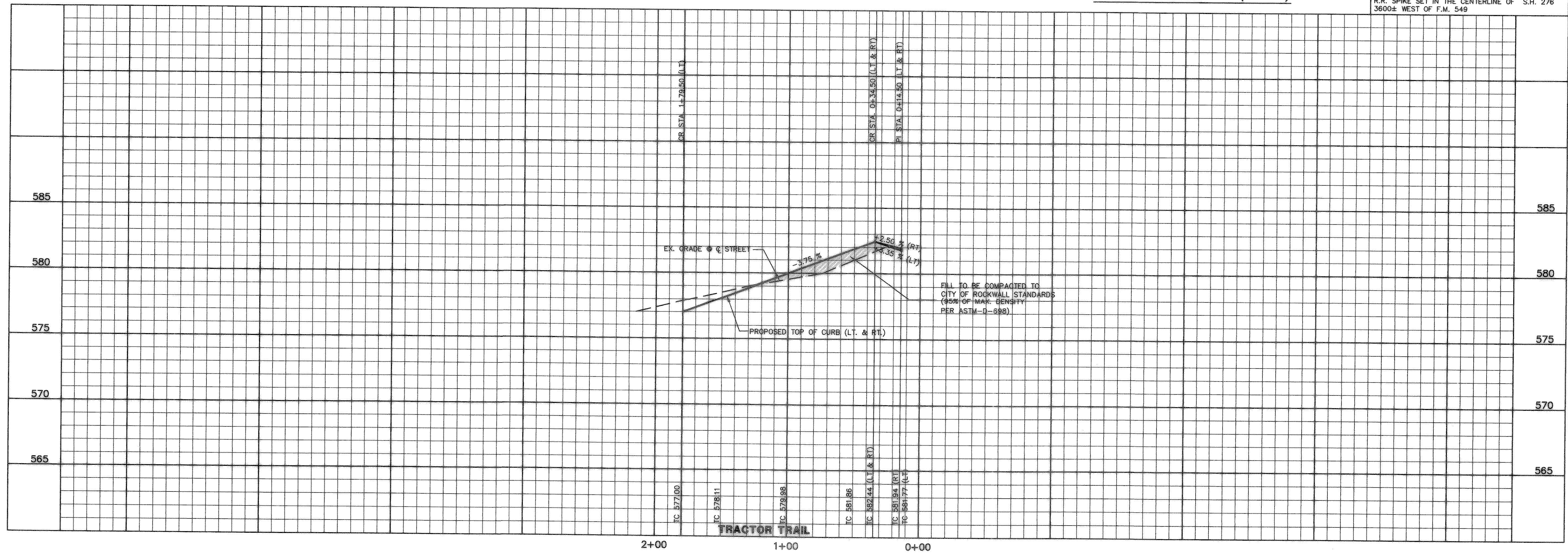
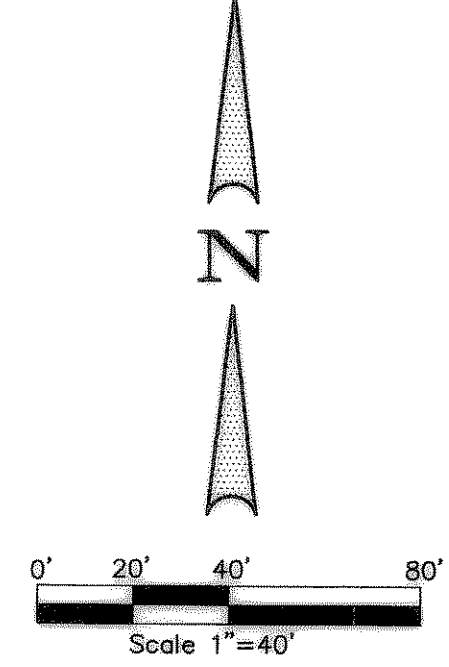
W. Winkelmann DATE: 6/20/05
WINKELMANN & ASSOCIATES, INC.

- NOTE:**
- 1) PAVEMENT FOR STREETS SHALL CONSIST OF 6" 3600 P.S.I. REINFORCED CONCRETE AND 6" LIME-STABILIZED SUBGRADE WITH 6" PARABOLIC CROWN.
 - 2) PAVEMENT FOR ALLEYS SHALL CONSIST OF 4000 P.S.I. REINFORCED CONCRETE AND 6" LIME-STABILIZED SUBGRADE WITH 5" INVERT. TYPICAL ALLEY SECTION WILL BE 7'-5"-7".
 - 3) CONTRACTOR TO RUN LIME SERIES BEFORE CONSTRUCTION.



BENCHMARK: ELEV. = 600.69
CITY OF ROCKWALL R-19
BRASS MONUMENT AT THE N/W CORNER OF
SILVERVIEW & DIAMOND WAY, 500' ± SOUTH OF
S.H. 276.

BENCHMARK: ELEV. = 583.56
R.R. SPIKE SET IN THE CENTERLINE OF S.H. 276
3600± WEST OF F.M. 549



THESE CONSTRUCTION PLANS WERE PREPARED UNDER THE RESPONSIBLE SUPERVISION OF MD. NAIM UDDIN KHAN, REGISTERED PROFESSIONAL ENGINEER NO. 87776.

THE SEAL APPEARING ON THIS DOCUMENT WAS AUTHORIZED BY MD. NAIM UDDIN KHAN, P.E. #87776

LOFLAND FARMS, PHASE 9B
TRACTOR TRAIL STA. 0+00 TO STA. 2+60.00
PAVING PLAN - ALLEY 11 STA. 0+00 TO 3+41.55

W.H. BAIRD
SURVEYOR
ROCKWALL COUNTY, TEXAS

D.R. HORTON
4306 MILLER ROAD, SUITE-A
ROWLETT, TEXAS 75088

PAVING PLAN & PROFILE
TRACTOR TRAIL STA. 0+00 TO STA. 2+60.00
PAVING PLAN - ALLEY 11 STA. 0+00 TO 3+41.55

Scale: 1"=40'
Date: 6-30-04
Designed By: RB
Drawn By: MK
Checked By: NK
File: 320045BPS.DWG View:
Project No.: 32004.01

SHEET
8
OF
28

Winkelmann & Associates, Inc.
CONSULTING CIVIL ENGINEERS & SURVEYORS
6910 Millcrest Woods Drive, Suite 100
Rockwall, Texas 75087
(972) 462-9900
(972) 462-9999 FAX
www.winkelmann.com

NO. DATE

REVISION

APPROV.