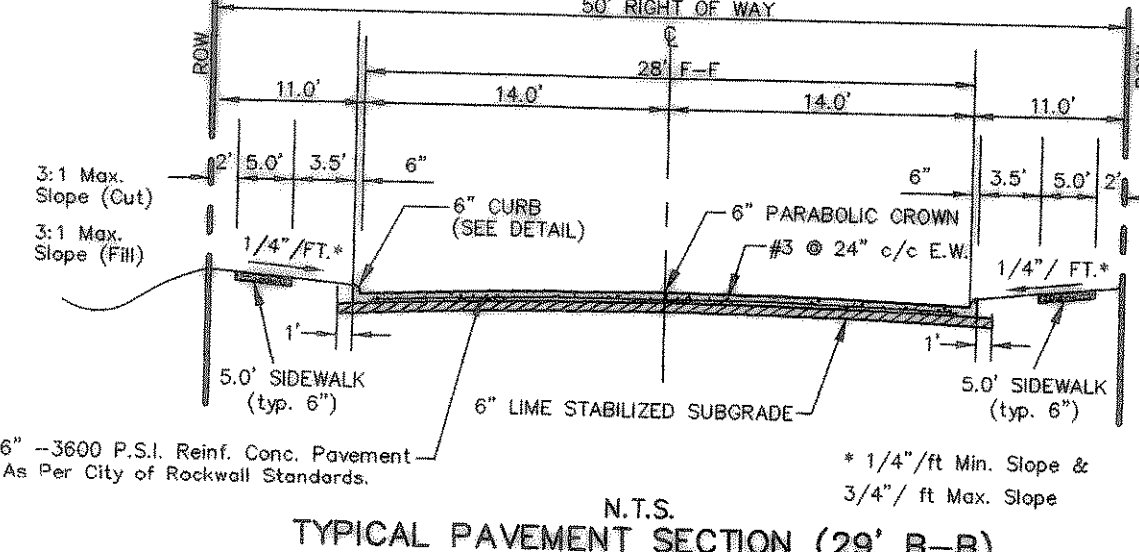
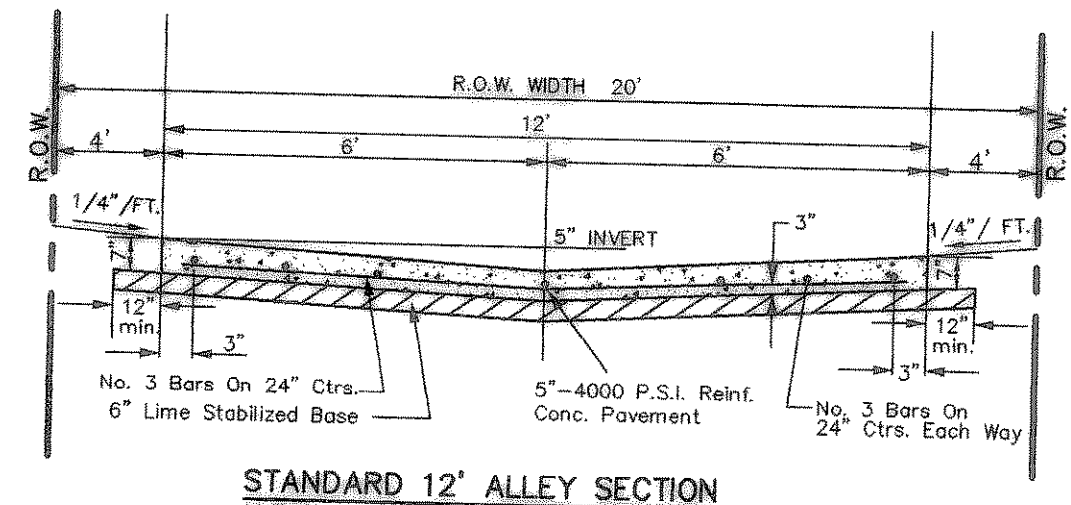
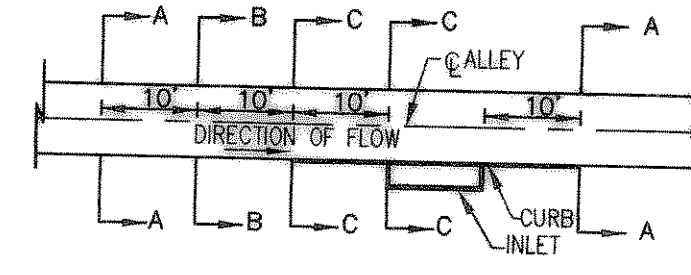
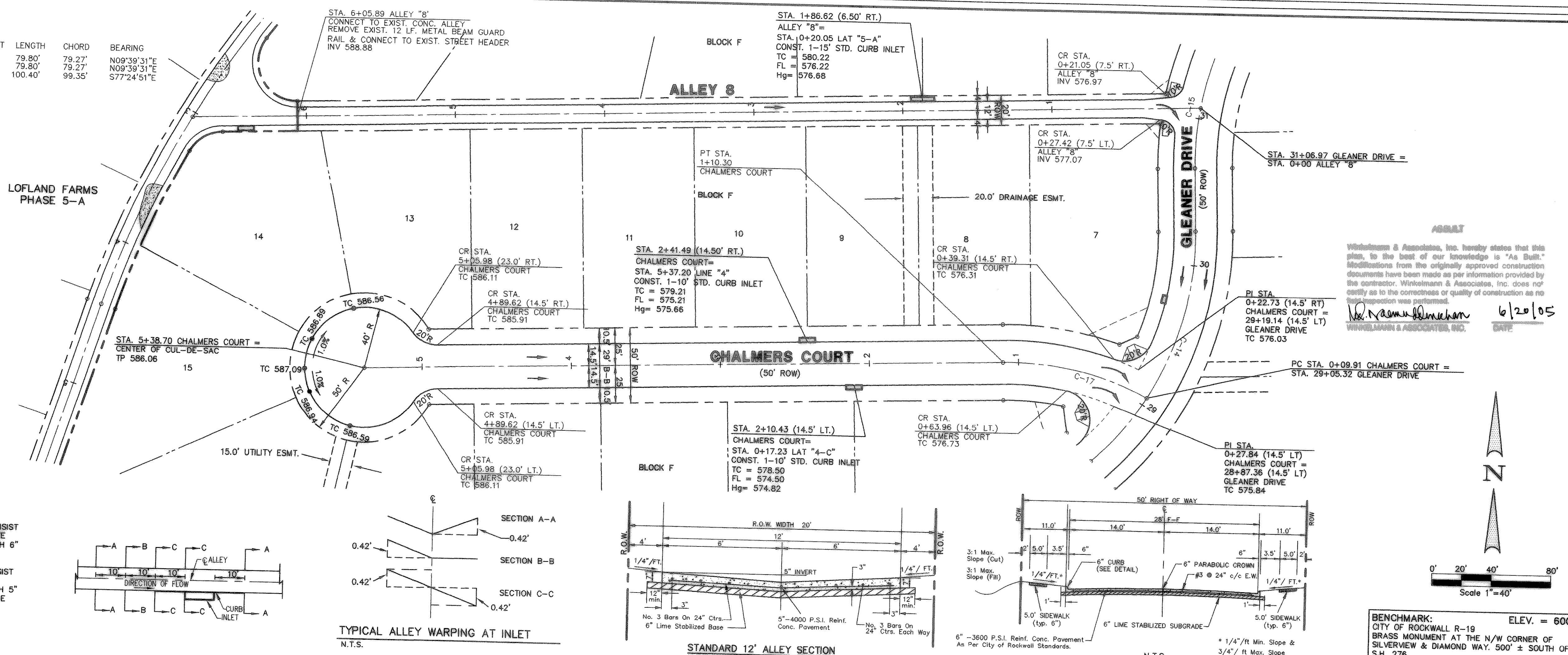


CURVE	RADIUS	DELTA	TANGENT	LENGTH	CHORD	BEARING
C-15	200.00'	22°51'40"	40.44'	79.80'	79.27'	N09°39'31"E
C-16	200.00'	22°51'40"	40.44'	79.80'	79.27'	N09°39'31"E
C-17	200.00'	28°45'45"	51.28'	100.40'	99.35'	S77°24'51"E

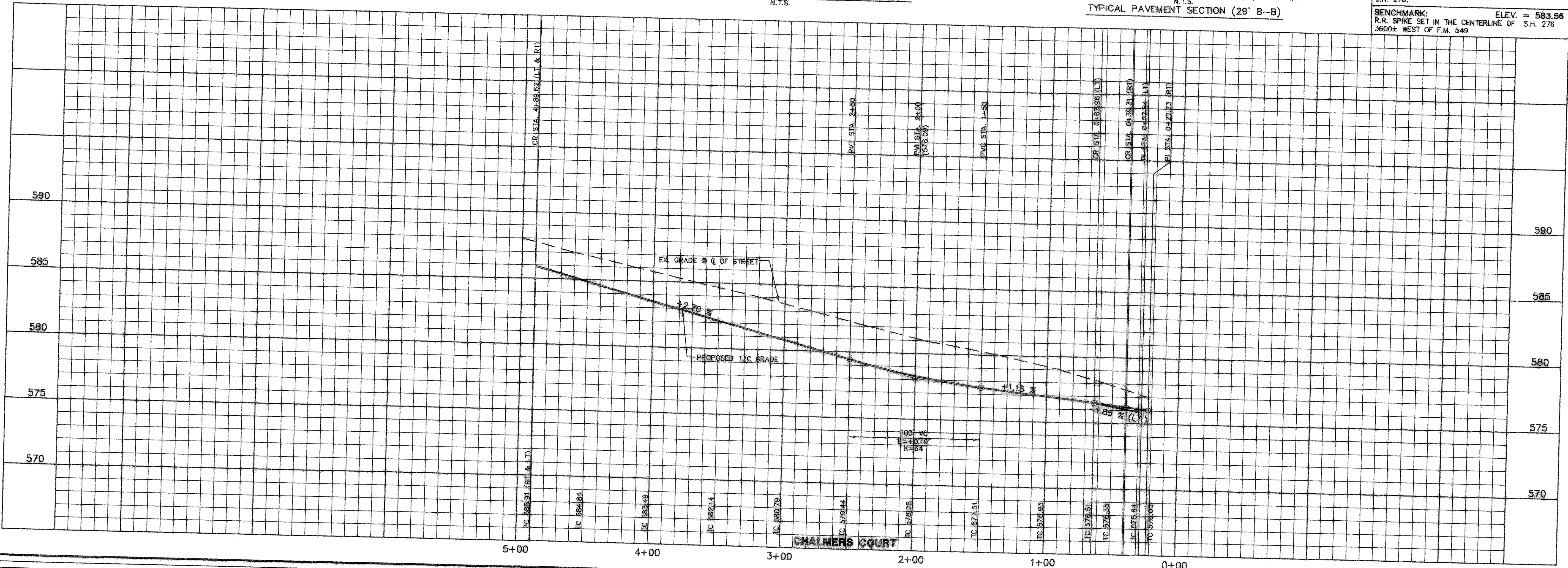
LEGEND	
TC	Top of Curb
TP	Top of Pavement
CR	Curve Return
FL	Flow Line
2	Street Station
1	Handicap Ramp
PP	Power Pole
WP	Water Valve
TP	Telephone Pedestal
WM	Water Meter
FH	Fire Hydrant
LP	Light Pole
IV	Irrigation Valve
TSN	Traffic Signs
SSMH	Sanitary Sewer Manhole
STMH	Storm Sewer Manhole
WMK	Water Marker
→	Flow line
▨	Existing Concrete Pavement

- NOTE:
- PAVEMENT FOR STREETS SHALL CONSIST OF 6" 3600 P.S.I. REINFORCED CONCRETE AND 6" LIME-STABILIZED SUBGRADE WITH 6" PARABOLIC CROWN.
  - PAVEMENT FOR ALLEYS SHALL CONSIST OF 4000 P.S.I. REINFORCED CONCRETE AND 5" LIME-STABILIZED SUBGRADE WITH 5" INVERT. TYPICAL ALLEY SECTION WILL BE 7'-5"-7'-7".
  - CONTRACTOR TO RUN LIME SERIES BEFORE CONSTRUCTION.



BENCHMARK: ELEV. = 600.69  
CITY OF ROCKWALL R-19  
BRASS MONUMENT AT THE N/W CORNER OF SILVERVIEW & DIAMOND WAY, 500' ± SOUTH OF S.H. 276.

BENCHMARK: ELEV. = 583.56  
R.R. SPIKE SET IN THE CENTERLINE OF S.H. 276  
3600± WEST OF F.M. 549



APPROVED: [Signature]

Winkelmann & Associates, Inc.  
CONSULTING CIVIL ENGINEERS & SURVEYORS  
6305 Wilshire Blvd., Suite 100  
Dallas, Texas 75220  
Phone: (972) 492-7990  
Fax: (972) 492-7999  
www.winkelmann.com

THESE CONSTRUCTION PLANS WERE PREPARED UNDER THE SUPERVISION OF M.D. NAIM UDDIN KHAN, REGISTERED PROFESSIONAL ENGINEER NO. 87776.

W.H. Baird Survey, Abstract No. 25  
City of Rockwall  
Rockwall County, Texas  
D.R. Horton  
4306 Miller Road, Suite-A  
Rowlett, Texas 75088

THE SEAL APPEARING ON THIS DOCUMENT WAS AUTHORIZED BY M.D. NAIM UDDIN KHAN, P.E. #87776

**PAVING PLAN & PROFILE**  
**CHALMERS COURT**  
**STA. 0+09.91 TO STA. 5+38.71**  
**PAVING PLAN - ALLEY 8 STA. 0+00 TO 6+05.89**

Scale: 1" = 40'  
Date: 07-09-04  
Designed By: RB  
Drawn By: MK  
Checked By: NK  
File: 320048P-4-DWG/View  
Project No.: 32004 01

SHEET  
**6**  
OF  
**28**