

LOFLAND FARMS
PHASE 5-A

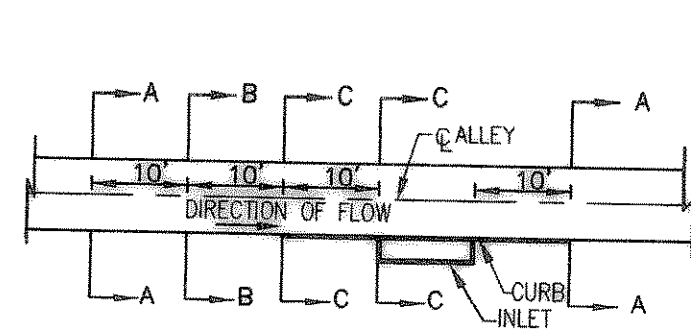
LEGEND

TC	Top of Curb
TP	Top of Pavement
CR	Curve Return
FL	Flow Line
2	Street Station
1	Handicap Ramp
PP	Power Pole
WP	Water Valve
TP	Telephone Pedestal
WM	Water Meter
FH	Fire Hydrant
LP	Light Pole
IV	Irrigation Valve
TSN	Traffic Signs
SSMH	Sanitary Sewer Manhole
STMH	Storm Sewer Manhole
WMK	Water Marker
---	Flow line
---	Existing Concrete
---	Pavement

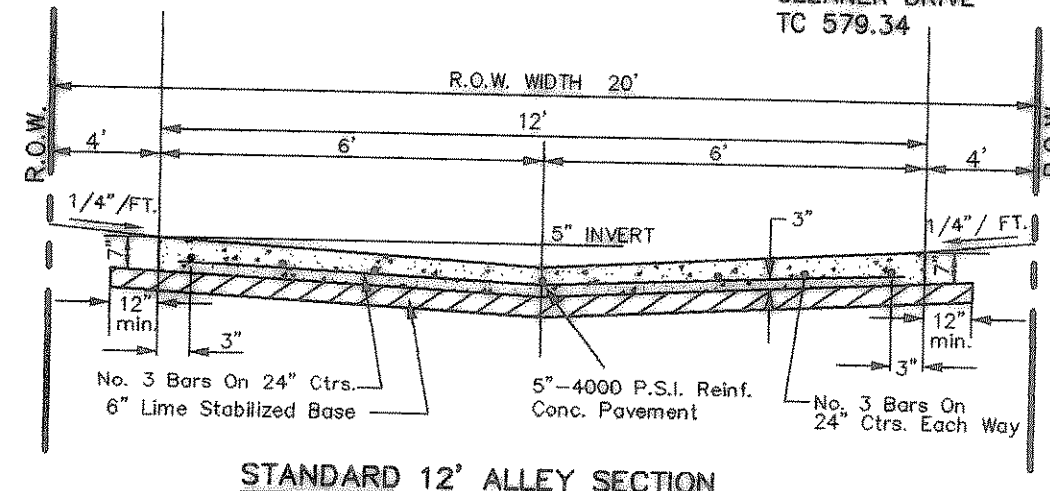
CURVE REPORT

CURVE	RADIUS	DELTA	TANGENT	LENGTH	CHORD	BEARING
C-1	36.00'	90°00'00"	36.00'	56.55'	50.91'	N43°13'41"E
C-4	36.00'	90°00'00"	36.00'	56.55'	50.91'	S46°46'19"E
C-5	250.00'	27°41'49"	61.63'	120.85'	119.68'	S77°55'25"E

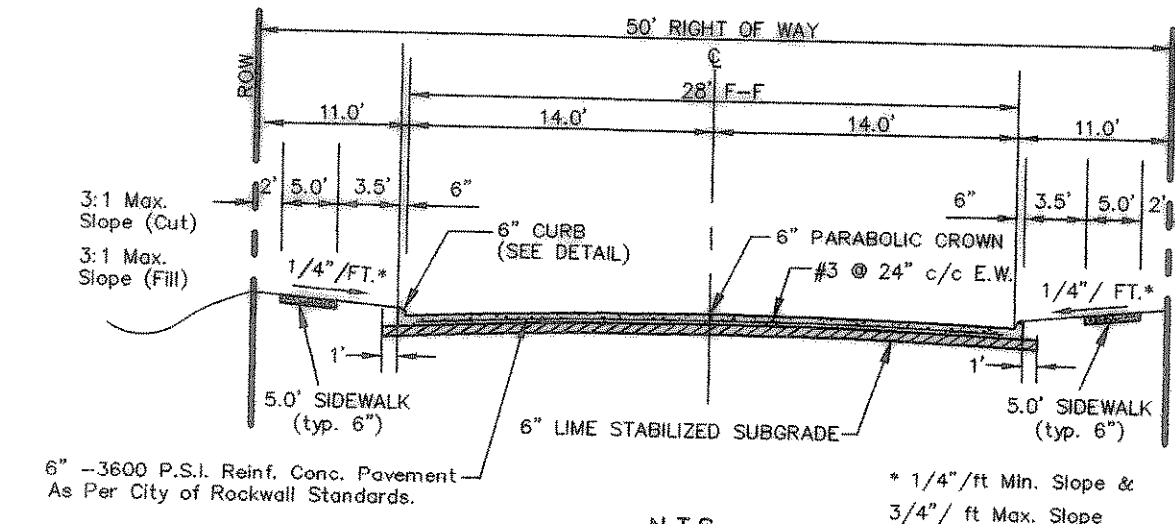
- NOTE:**
- 1) PAVEMENT FOR STREETS SHALL CONSIST OF 6" 3600 P.S.I. REINFORCED CONCRETE AND 6" LIME-STABILIZED SUBGRADE WITH 6" PARABOLIC CROWN.
 - 2) PAVEMENT FOR ALLEYS SHALL CONSIST OF 4000 P.S.I. REINFORCED CONCRETE AND 6" LIME-STABILIZED SUBGRADE WITH 5" INVERT. TYPICAL ALLEY SECTION WILL BE 7'-5"-7".
 - 3) CONTRACTOR TO RUN LIME SERIES BEFORE CONSTRUCTION.



TYPICAL ALLEY WARPING AT INLET
N.T.S.



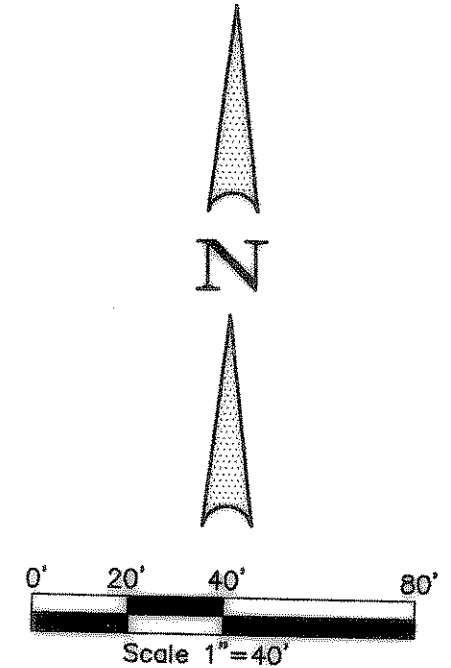
STANDARD 12' ALLEY SECTION
N.T.S.



TYPICAL PAVEMENT SECTION (29' B-B)
N.T.S.

BENCHMARK: ELEV. = 600.89
CITY OF ROCKWALL R-19
BRASS MONUMENT AT THE N/W CORNER OF
SILVERVIEW & DIAMOND WAY, 500' ± SOUTH OF
S.H. 276.

BENCHMARK: ELEV. = 583.56
R.R. SPIKE SET IN THE CENTERLINE OF S.H. 276
3600± WEST OF F.M. 549



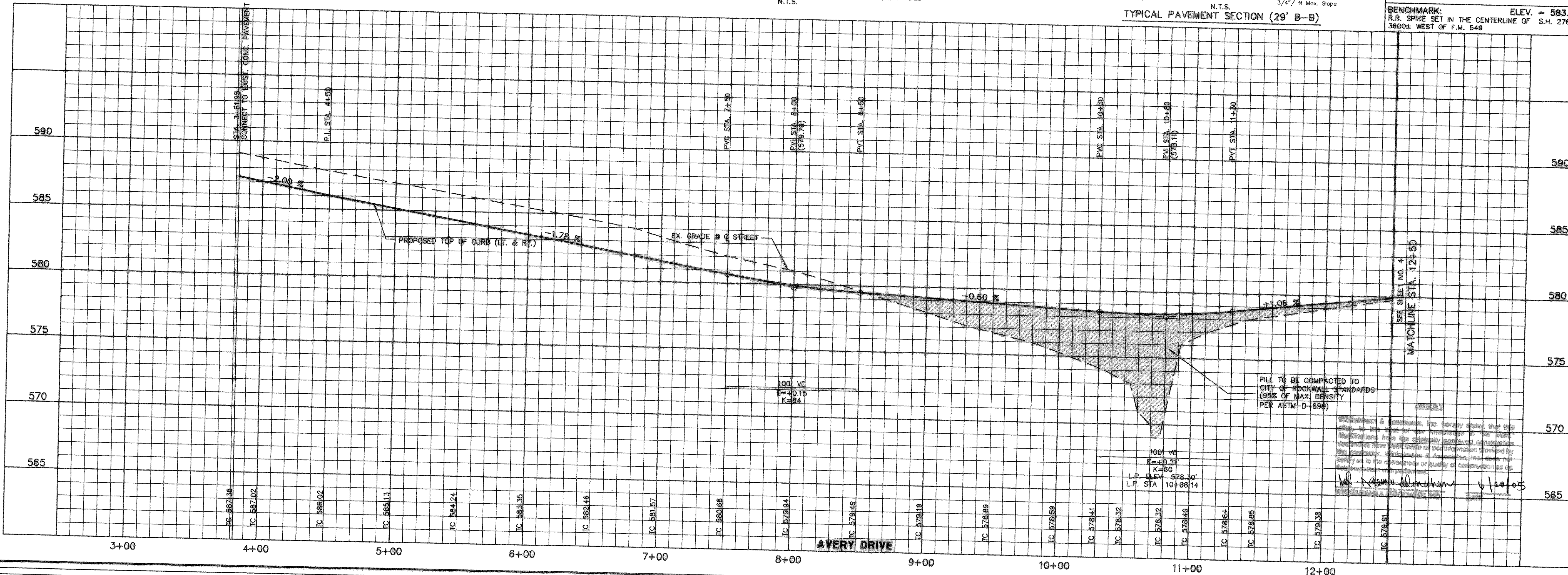
THESE CONSTRUCTION PLANS WERE PREPARED UNDER THE RESPONSIBLE SUPERVISION OF
MD. NAIM UDDIN KHAN, REGISTERED PROFESSIONAL
ENGINEER NO. 87776.

THE SEAL APPEARING ON THIS DOCUMENT WAS AUTHORIZED BY
MD. NAIM UDDIN KHAN, P.E. #87776

PAVING PLAN & PROFILE

ALLEY 9

STA. 3+81.95 TO STA. 12+50
ALLEY 9 STA. 0+71.06 TO 6+48.61
ALLEY 10 STA. 0+23.04 TO 3+00



Scale: H: 1"=40' Date: 6-30-04
Designed By: RB
Drawn By: MK
Checked By: MK
File: 32004-58P(DWG) View:
Project No.: 32004.01

SHEET
3
OF
28

Winkelmann & Associates, Inc.
CONSULTING CIVIL ENGINEERS & SURVEYORS
6750 Hillcrest Plaza, Suite 100
Dallas, Texas 75230
(972) 482-7999 FAX

APPROVED: [Signature]
DATE: [Blank]
NO. [Blank]

LOFLAND FARMS, PHASE 5B
W.H. BAIRD SURVEY, ABSTRACT NO. 25
CITY OF ROCKWALL
ROCKWALL COUNTY, TEXAS

D.R. HORTON
4306 MILLER ROAD, SUITE-A
ROWLETT, TEXAS 75088