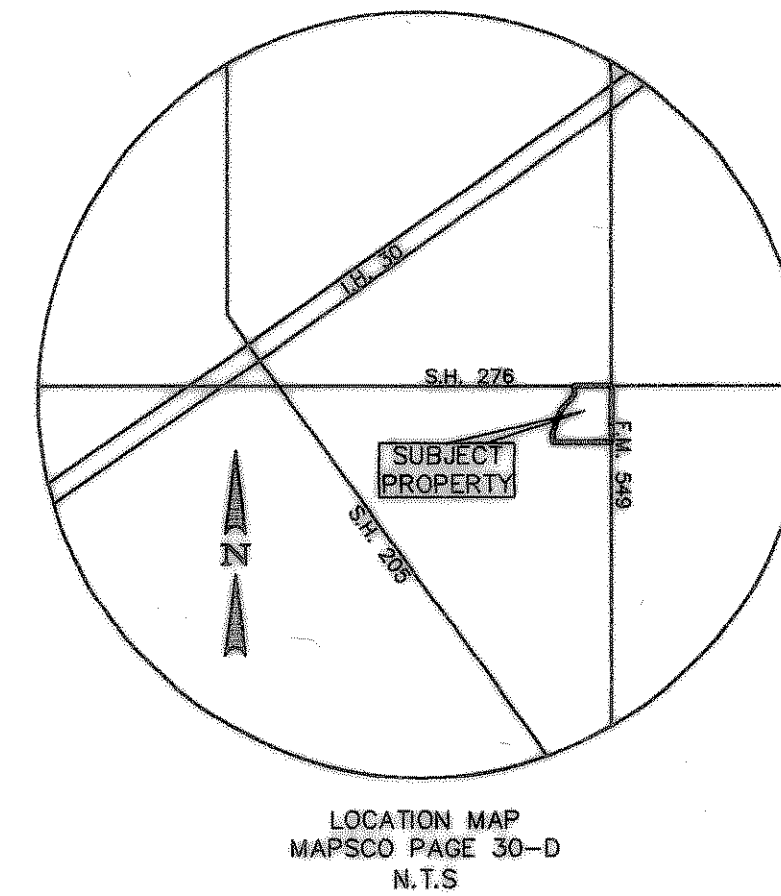


CONSTRUCTION PLANS FOR LOFLAND FARMS

PHASE 5-B



ALL CONTRACTORS TO USE STANDARD DETAILS
PER CITY OF ROCKWALL.

CITY OF ROCKWALL

ROCKWALL COUNTY, TEXAS

JULY 09, 2004

DEVELOPER:

D.R. HORTON
4306 MILLER ROAD, SUITE-A
ROWLETT, TEXAS 75088

SHEET INDEX

- COVER SHEET
- FINAL PLAT
- 1. DRAINAGE AREA MAP
- 2. DRAINAGE CALCULATIONS
- PAVING PLANS & PROFILES
- 3. AVERY DRIVE STA. 3+81.95 TO STA. 12+50
- ALLEY 9 STA. 0+71.06 TO 6+48.61
- ALLEY 10 STA. 0+23.04 TO 3+00
- 4. AVERY DRIVE STA. STA. 12+50 TO STA. 13+38.85
- NEW HOLLAND DR. STA. 13+38.85 TO STA. 22+00
- ALLEY 10 STA. 3+00 TO 13+23.58
- ALLEY 13 STA. 0+00 TO 3+00
- 5. NEW HOLLAND DRIVE - STA. 22+00 TO 22+49.44
- DEUTZ COURT - STA. 22+49.44 TO 24+63.05
- ALLEY 13 STA. 3+00 TO 7+85.52
- 6. CHALMERS COURT STA. 0+09.91 TO STA. 5+38.71
- ALLEY 8 STA. 0+00 TO 6+05.89
- 7. GLEANER DRIVE STA. 27+49.19 TO STA. 32+89.82
- 8. TRACTOR TRAIL STA. 0+00 TO STA. 2+60.00
- ALLEY 11 STA. 0+00 TO 3+41.55
- 9. HAYMAKER DRIVE STA. 0+00 TO STA. 5+41.27
- ALLEY 12 STA. 0+00 TO 4+29.55
- 9A. LEFT TURN LANE - FM 549
- ALLEY PROFILES
- 10. ALLEY 8 - STA. 0+00 TO STA. 6+05.89
- ALLEY 9 - STA. 0+00 TO STA. 6+48.61
- 11. ALLEY 10 - STA. 0+37.54 TO STA. 13+09.08
- 12. ALLEY 11 - STA. 0+00 TO STA. 3+41.55
- ALLEY 12 - STA. 0+00 TO STA. 4+29.55
- ALLEY 13 - STA. 0+00 TO STA. 7+85.52
- STORM SEWER PLANS
- 13. LINE "1", LINE "2", LINE "3", LINE "4",
LINE "5" & LINE "9"
- 14. LINE "6", LINE "7" & LINE "8"
- 15. CULVERT PLAN, PROFILE & CALCULATIONS
- STORM SEWER PROFILES
- 16. LINE "1", LINE "2" & LINE "3"
- 17. LINE "4", LINE "5" & LINE "6"
- 18. LINE "7", LINE "8", LINE "9" & LINE "10"
- 19. WATER & SANITARY SEWER PLAN
- 20. WATER & SANITARY SEWER PLAN
- SANITARY SEWER PROFILES
- 21. LINE J - STA. 0+82.81 TO STA. 13+20.00
- 22. LINE L - STA. 0+00 TO STA. 18+41.83
- 23. LINE F - STA. 0+00 TO STA. 5+50
- LINE G - STA. 0+23.04 TO STA. 2+72.25
- LINE H - STA. 0+00 TO STA. 2+00
- LINE I - STA. 1+03.53 TO STA. 3+15.00
- 24. LOT GRADING PLAN
- 25. LOT GRADING PLAN
- 26. LOT GRADING PLAN
- 27. STORM WATER POLLUTION PREVENTION PLAN
- 28. STORM WATER POLLUTION PREVENTION PLAN -DETAILS

ASBUILT

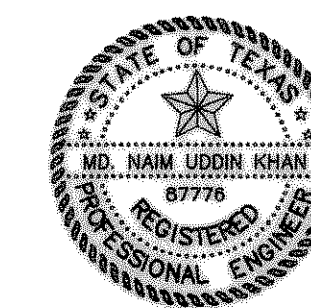
Winkelmann & Associates, Inc. hereby states that this plan, to the best of our knowledge is "As Built." Modifications from the originally approved construction documents have been made as per information provided by the contractor. Winkelmann & Associates, Inc. does not certify as to the correctness or quality of construction as no field inspection was performed.

W. Winkelmann 6/20/05
DATE

THESE CONSTRUCTION PLANS WERE PREPARED UNDER THE RESPONSIBLE SUPERVISION OF MD. NAIM UDDIN KHAN, REGISTERED PROFESSIONAL ENGINEER NO. 87776

W. Winkelmann 7/9/04

THE SEAL APPEARING ON THIS DOCUMENT WAS AUTHORIZED BY MD. NAIM UDDIN KHAN, # 87776



Winkelmann & Associates, Inc.

CONSULTING CIVIL ENGINEERS ■ SURVEYORS
6750 HILLCREST PLAZA DRIVE, SUITE 100 (972) 490-7090
DALLAS, TEXAS 75230 (972) 490-7099 FAX

LOFLAND FARMS, PHASE 5-B