

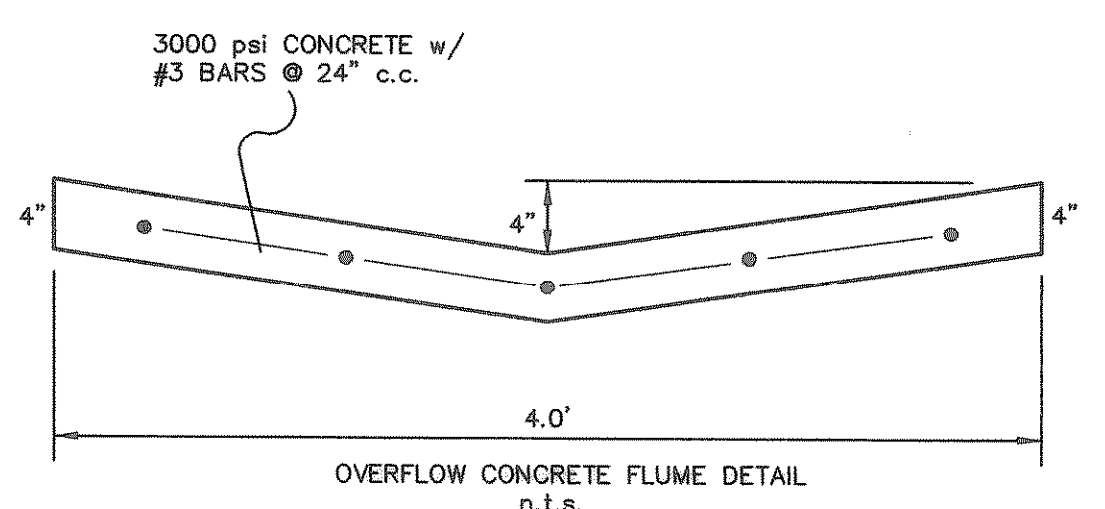
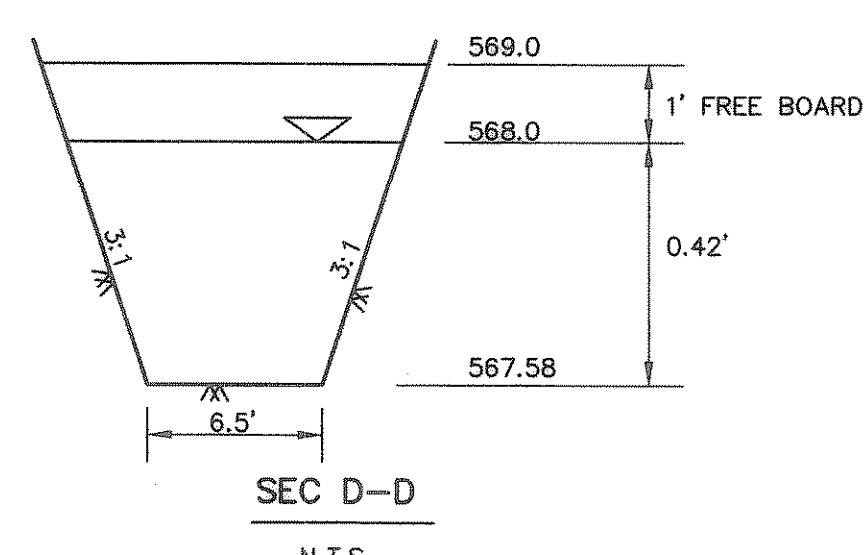
SEE SHEET NO. 21
MATCHLINE STA 7+00

STORM SEWER CURVE TABLE

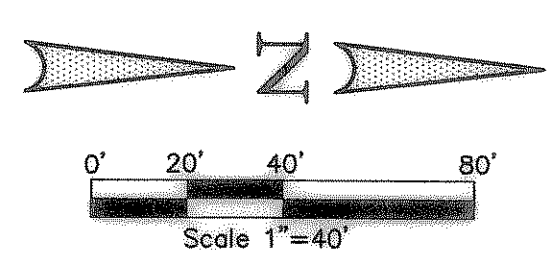
CURVE	RADIUS	DELTA	TANGENT	LENGTH	CHORD	BEARING
CV-5	157.95'	60°40'23"	92.20'	166.84'	159.15'	N14°34'56"W
CV-7	100.21'	28°42'54"	23.80'	48.73'	48.30'	N79°15'19"W
CV-8	500.00'	07°04'39"	30.92'	61.76'	61.72'	S05°19'30"E

- LEGEND**
- 730- EXIST. CONTOURS
 - 724- PROP. CONTOURS
 - S.S. SANITARY SEWER
 - Q100 100-YR FLOW
 - TC TOP OF CURB
 - FL FLOW LINE
 - EW END OF WALL
 - TW TOP OF WALL
 - BW BOTTOM OF WALL
 - 89°0 EXIST. SPOT ELEVATION
 - FLOW ARROW
 - RETAINING WALL

ASBUILT
Winkelmann & Associates, Inc. hereby states that this plan, to the best of our knowledge is "As Built." Modifications from the originally approved construction documents have been made as per information provided by the contractor. Winkelmann & Associates, Inc. does not certify as to the correctness or quality of construction as no field inspection was performed.
W. Winkelmann 5/14/04
WINKELMANN & ASSOCIATES, INC. DATE



Q₁₀₀ = 4.70 c.f.s.
n = 0.035
S = 0.77%
d = 0.36'
V_{average} = 1.72 ft/sec
Q_{cap} = 6.10 c.f.s.



REVISION T/C ELEVATION
12/16/03

APPROVED
Winkelmann & Associates, Inc.
CONSULTING CIVIL ENGINEERS & SURVEYORS
6209 Hillcrest Plaza, Suite 100
Rockwall, Texas 75087
(972) 460-9900
www.winkelmann.com

THESE CONSTRUCTION PLANS WERE PREPARED UNDER THE RESPONSIBLE SUPERVISION OF W. WINKELMANN, REGISTERED PROFESSIONAL ENGINEER NO. 87776
MD. NAJIB UDDIN KHAN, # 87776

LOFLAND FARMS, PHASE 5A
CITY OF ROCKWALL
ROCKWALL COUNTY, TEXAS
CONTINENTAL HOMES
621 WEST COLLEGE STREET
GRAPEVINE, TEXAS 76051

THE SEAL APPEARING ON THIS DOCUMENT WAS AUTHORIZED BY MD. NAJIB UDDIN KHAN, # 87776

STORM SEWER PLAN
LINE '5', LINE '6', LINE '7', LINE '8', LINE '9' & LINE '10' STA 1+20 TO 7+00
LOFLAND FARMS, PHASE 5-A

Scale: 1"=40' Date: 09-04-03
Designed By: MS
Drawn By: MS
Checked By: MK
File: 3200-05AS3.DWG
Project No.: 32004.01

SHEET
22
OF
35

BENCHMARK: ELEV. = 600.69
CITY OF ROCKWALL R-19
BRASS MONUMENT AT THE N/W CORNER OF
SILVERVIEW & DIAMOND WAY. 500' ± SOUTH OF
S.H. 276.

BENCHMARK: ELEV. = 583.56
R.R. SPIKE SET IN THE CENTERLINE OF S.H. 276
3600± WEST OF F.M. 549

