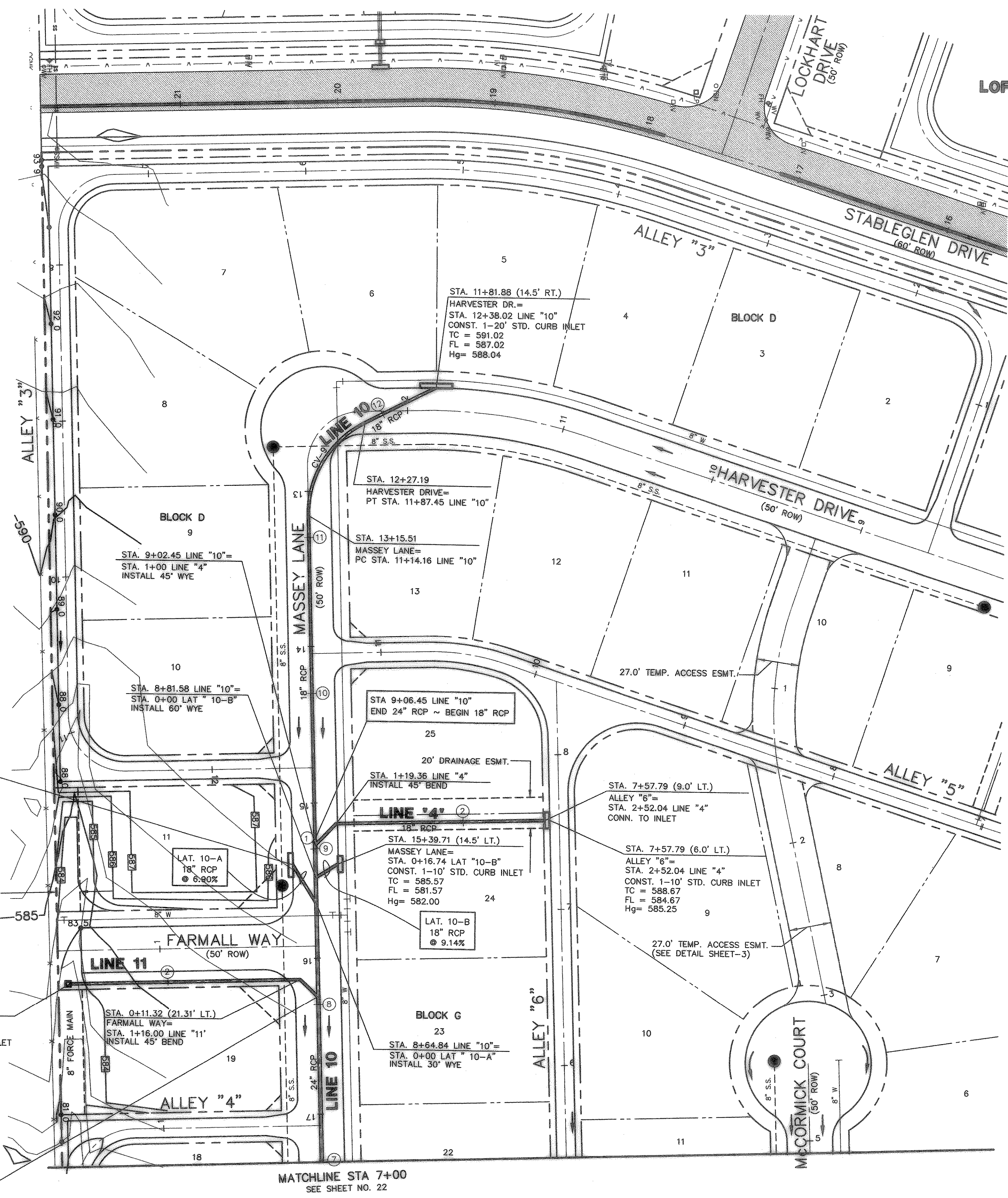


- LEGEND**
- 730- EXIST. CONTOURS
 - 724- PROP. CONTOURS
 - S.S. SANITARY SEWER
 - Q₁₀₀ 100-YR FLOW
 - TC TOP OF CURB
 - FL FLOW LINE
 - EW END OF WALL
 - 88°0' EXIST. SPOT ELEVATION
 - FLOW ARROW
 - RETAINING WALL

STA. 15+39.71 (14.5' RT.)
 MASSEY LANE=
 STA. 0+29.00 LAT "10-A"
 CONST. 1-15' STD. CURB INLET
 TC = 585.57
 FL = 581.57
 Hg = 582.16

STA. 1+57.84 (21.31' LT.)
 FARMALL WAY=
 STA. 2+32.53 LINE "11"
 CONST. 1-2'X2' TYPE "Y" INLET
 TOP = 583.00
 THROAT = 581.92
 FL = 579.07
 Hg = 579.93

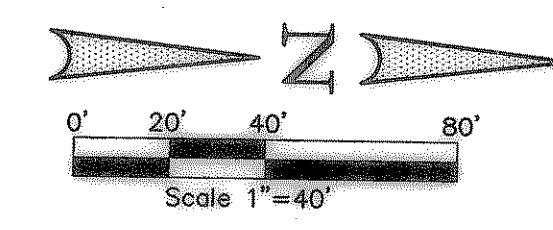
STA. 8+04.83 LINE "10"=
 STA. 1+00 LINE "11"
 INSTALL 45° WYE



**LOFLAND FARMS
 PHASE 2**

STORM SEWER CURVE TABLE

CURVE	RADIUS	DELTA	TANGENT	LENGTH	CHORD	BEARING
CV-9	65.00'	64°36'34"	41.10'	73.30'	69.47'	N59°28'54"W



ASBUILT
 Winkelman & Associates, Inc. hereby states that this plan, to the best of our knowledge is "As Built." Modifications from the originally approved construction documents have been made as per information provided by the contractor. Winkelman & Associates, Inc. does not certify as to the correctness or quality of construction as no field inspection was performed.
Winkelman 5/14/04
 WINKELMANN & ASSOCIATES, INC. DATE

THESE CONSTRUCTION PLANS WERE PREPARED UNDER THE RESPONSIBLE SUPERVISION OF MD. NAIM UDDIN KHAN, REGISTERED PROFESSIONAL ENGINEER NO. 87776

THE SEAL APPEARING ON THIS DOCUMENT WAS AUTHORIZED BY MD. NAIM UDDIN KHAN, # 87776

**STORM SEWER PLAN
 LINE "4", LINE 11 &
 LINE "10" STA. 7+00 TO 12+38.02
 LOFLAND FARMS, PHASE 5-A**

Scale : 1"=40' Date : 09-04-03
 Designed By : MS
 Drawn By : MS
 Checked By : NK
 File : 320045A5T2.DWG
 Project No. : 32004.01

BENCHMARK: ELEV. = 600.69
 CITY OF ROCKWALL R-19
 BRASS MONUMENT AT THE N/W CORNER OF
 SILVERVIEW & DIAMOND WAY, 500' ± SOUTH OF
 S.H. 276.
 BENCHMARK: ELEV. = 583.56
 R.R. SPIKE SET IN THE CENTERLINE OF S.H. 276
 3600± WEST OF F.M. 549

SHEET
 21
 OF
 35

APPROV. DATE REVISION

Winkelman & Associates, Inc.
 CONSULTING CIVIL ENGINEERS & SURVEYORS
 8750 Mineral Park Drive, Suite 100
 Rockwall, Texas 75087
 (972) 462-7000
 www.winkelman.com

THESE CONSTRUCTION PLANS WERE PREPARED UNDER THE RESPONSIBLE SUPERVISION OF MD. NAIM UDDIN KHAN, REGISTERED PROFESSIONAL ENGINEER NO. 87776

LOFLAND FARMS, PHASE 5A
 GARD SURVEY, ABSTRACT NO. 25
 COUNTY OF ROCKWALL,
 ROCKWALL COUNTY, TEXAS
 CONTINENTAL HOMES
 621 WEST COLLEGE STREET
 GRAPEVINE, TEXAS 76051