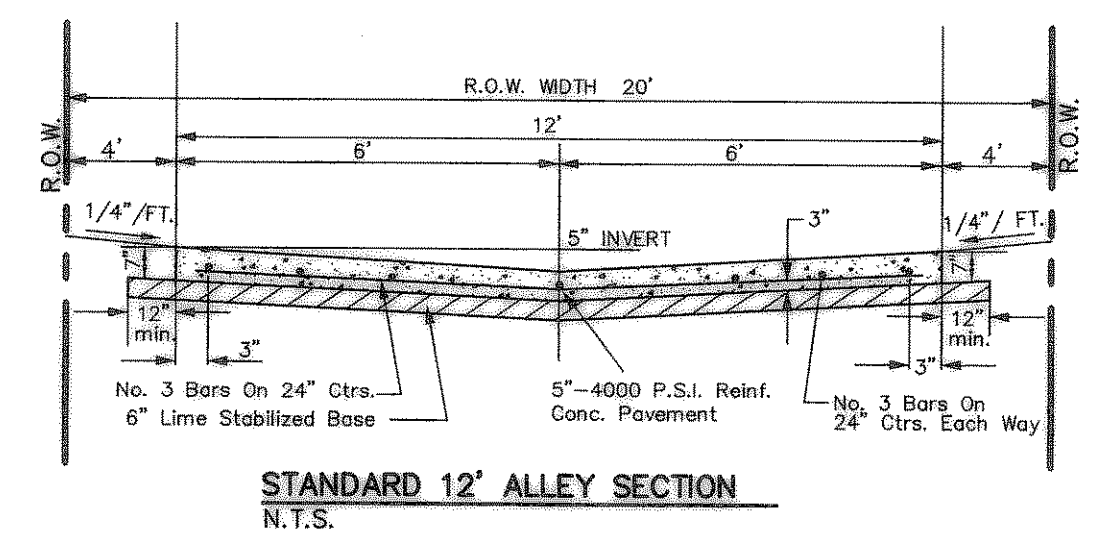


TYPICAL ALLEY WARPING AT INLET  
N.T.S.

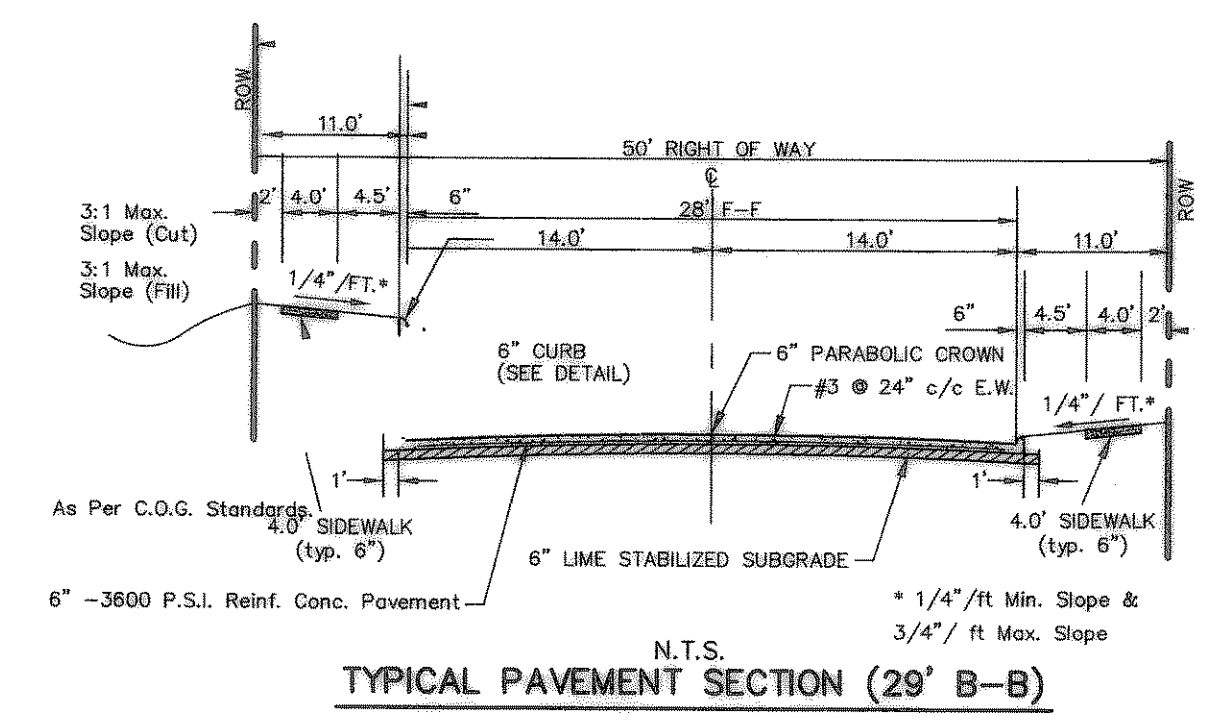
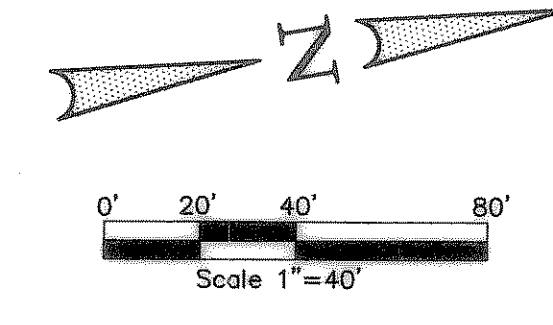
- NOTE:
- PAVEMENT FOR STREETS SHALL CONSIST OF 6" 3600 P.S.I. REINFORCED CONCRETE AND 6" LIME-STABILIZED SUBGRADE WITH 6" PARABOLIC CROWN.
  - PAVEMENT FOR ALLEYS SHALL CONSIST OF 4000 P.S.I. REINFORCED CONCRETE AND 6" LIME-STABILIZED SUBGRADE WITH 5" INVERT. TYPICAL ALLEY SECTION WILL BE 7'-5" - 7'-7".
  - CONTRACTOR TO RUN LIME SERIES BEFORE CONSTRUCTION.



STANDARD 12' ALLEY SECTION  
N.T.S.

CURVE REPORT

CURVE	RADIUS	DELTA	TANGENT	LENGTH	CHORD	BEARING
C-12	300.00'	20°01'25"	52.96'	104.84'	104.31'	S08°12'59"W
C-13	34.50'	89°59'28"	34.49'	54.19'	48.79'	S46°47'27"E

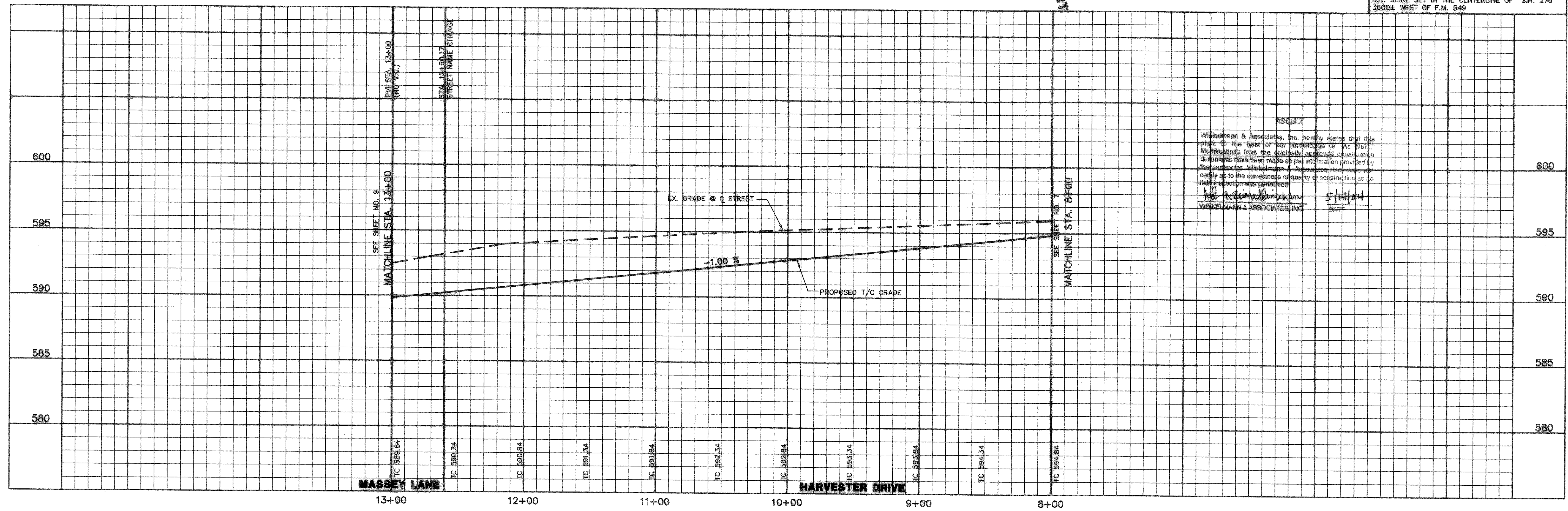


TYPICAL PAVEMENT SECTION (29' B-B)  
N.T.S.

- LEGEND
- TC TOP OF CURB
  - TP TOP OF PAVEMENT
  - CR CURVE RETURN
  - F L FLOW LINE
  - 2 STREET STATION
  - △ HANDICAP RAMP @ STREET & STREET INTERSECTION
  - HANDICAP RAMP @ STREET & ALLEY INTERSECTION

BENCHMARK: ELEV. = 600.69  
CITY OF ROCKWALL R-19  
BRASS MONUMENT AT THE N/W CORNER OF  
SILVERVIEW & DIAMOND WAY, 500' ± SOUTH OF  
S.H. 276.

BENCHMARK: ELEV. = 583.56  
R.R. SPIKE SET IN THE CENTERLINE OF S.H. 276  
3600± WEST OF F.M. 549



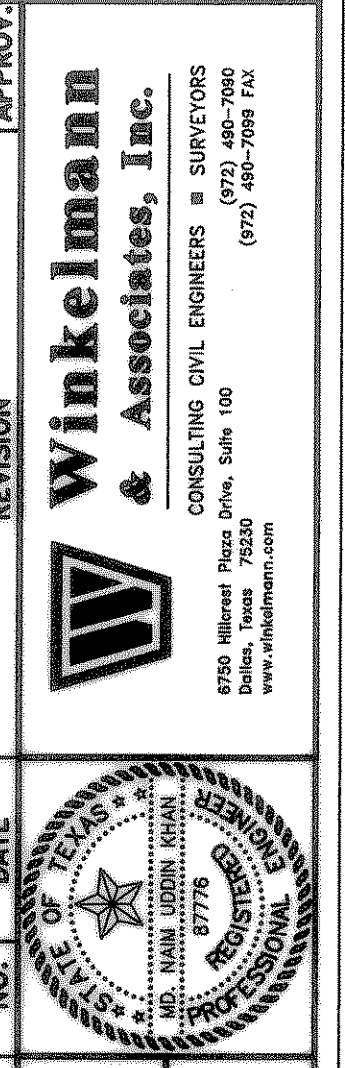
WINKELMANN & ASSOCIATES, INC. hereby states that this plan, to the best of our knowledge is as built. Modifications from the originally approved construction documents have been made as per information provided by the contractor. Winkelman & Associates, Inc. does not certify as to the correctness or quality of construction as no field inspection was performed.

*Winkelman & Associates, Inc.*  
WINKELMANN & ASSOCIATES, INC.  
DATE: 5/11/04

THESE CONSTRUCTION PLANS WERE PREPARED BY  
MD. NAIM UDDIN KHAN, REGISTERED PROFESSIONAL  
ENGINEER NO. 87776

THE SEAL APPEARING ON THIS DOCUMENT WAS AUTHORIZED BY  
MD. NAIM UDDIN KHAN, # 87776

NO.	DATE	REVISION	APPROV.



LOPLAND FARMS, PHASE 5A  
BARRETT SUBDIVISION  
CITY OF ROCKWALL, TEXAS  
CONTINENTAL HOMES  
621 WEST COLLEGE STREET  
GRAPEWINE, TEXAS 76051

W.H. Naim Uddin Khan 9/16/03

**PAVING PLAN & PROFILE**  
**HARVESTER DRIVE**  
**STA. 8+00 TO STA. 12+60.17**  
**MASSEY LANE**  
**STA. 12+60.17 TO STA. 13+00**  
**PAVING PLAN - ALLEY 3 STA. 0+00 TO 1+00**

Scale: 1"=40'  
Date: 04-01-03  
Designed By: RB  
Drawn By: MK  
Checked By: NK  
File: 3200-6AP7.DWG View:  
Project No.: 32004-01

SHEET  
8  
OF  
35

Winkelman & Associates, Inc.  
CONSULTING CIVIL ENGINEERS & SURVEYORS  
6215 West College Street, Suite 100  
Dallas, Texas 75220  
(972) 292-2900 FAX  
www.winkelman.com