

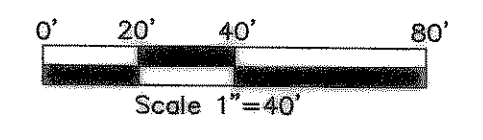
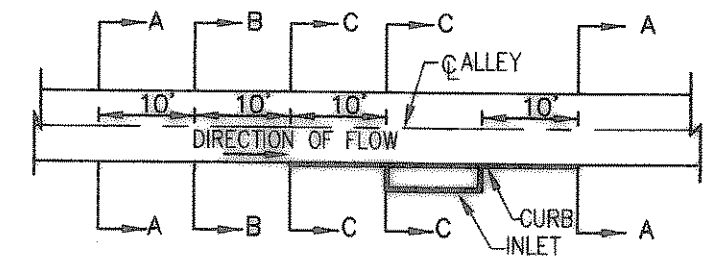
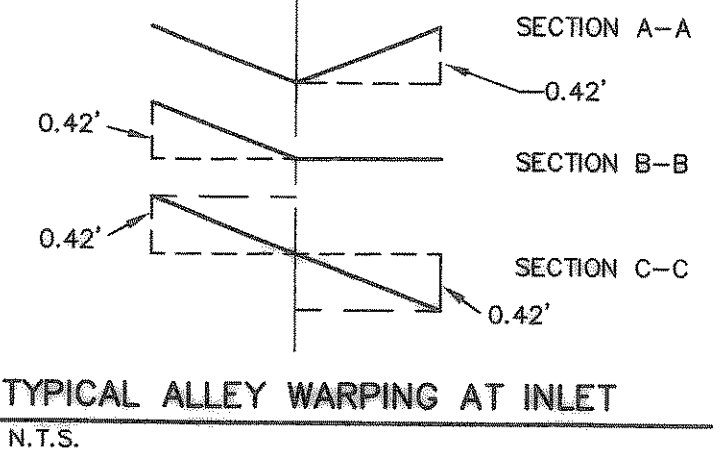
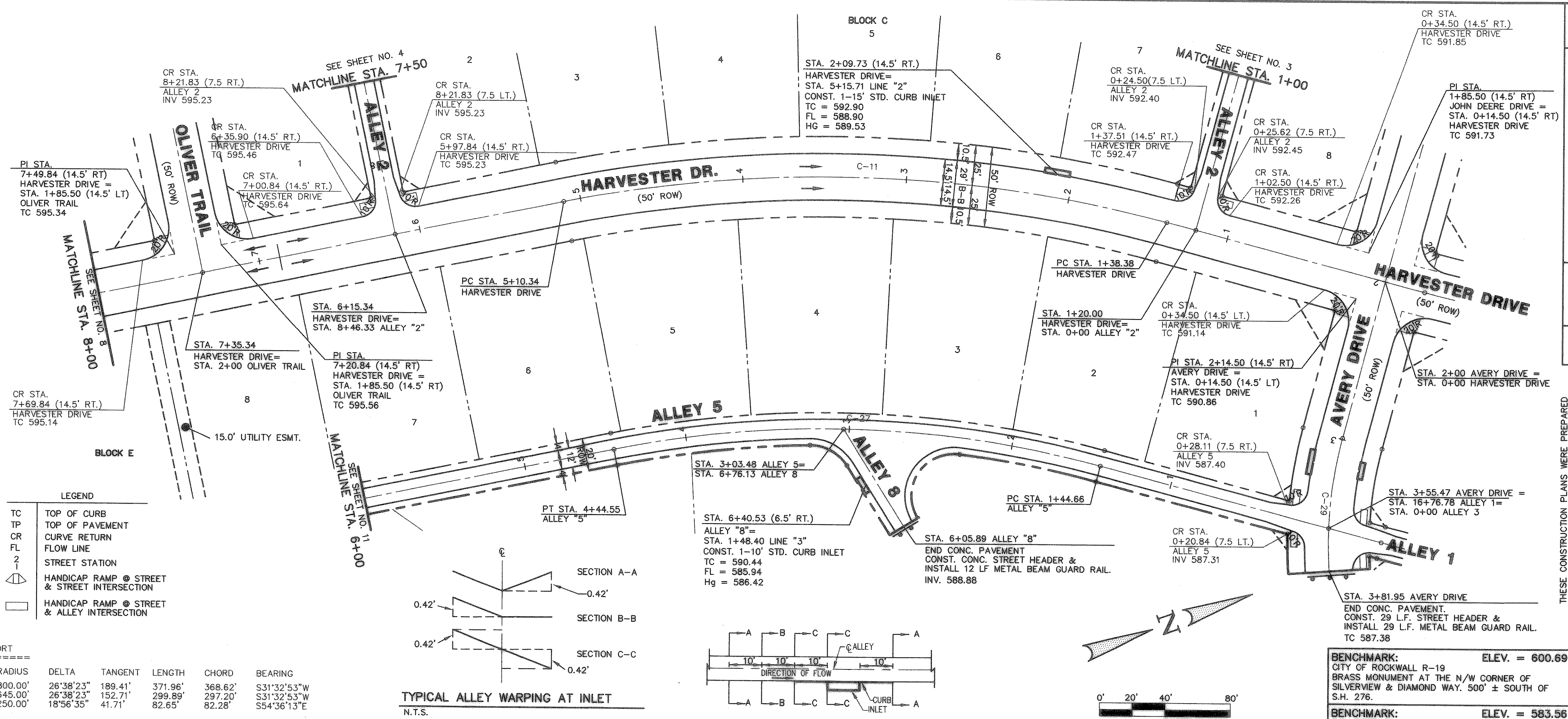
**LEGEND**

- TC TOP OF CURB
- TP TOP OF PAVEMENT
- CR CURVE RETURN
- FL FLOW LINE
- 2 1 STREET STATION
- 1 HANDICAP RAMP @ STREET & STREET INTERSECTION
- 2 1 HANDICAP RAMP @ STREET & ALLEY INTERSECTION

**CURVE REPORT**

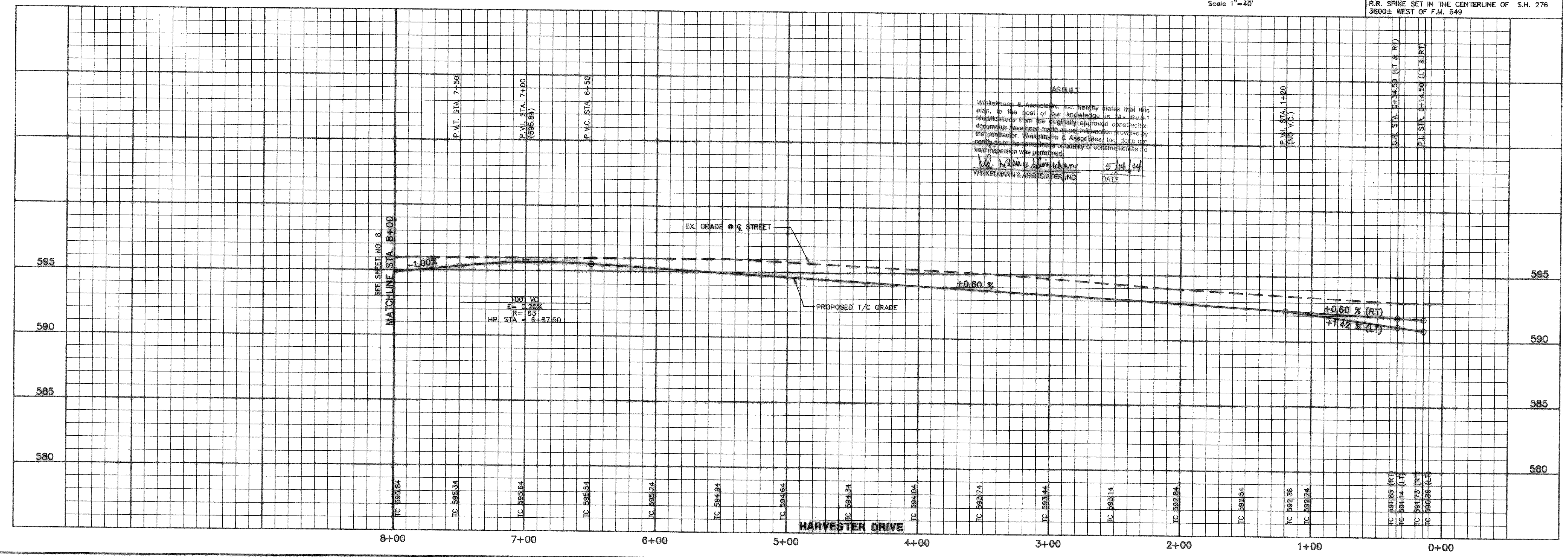
CURVE	RADIUS	DELTA	TANGENT	LENGTH	CHORD	BEARING
C-11	800.00'	26°38'23"	189.41'	371.96'	368.62'	S31°32'53"W
C-27	645.00'	26°38'23"	152.71'	299.89'	297.20'	S31°32'53"W
C-29	250.00'	18°56'35"	41.71'	82.65'	82.28'	S54°36'13"E

- NOTE:**
- 1) PAVEMENT FOR STREETS SHALL CONSIST OF 6" 3600 P.S.I. REINFORCED CONCRETE AND 6" LIME-STABILIZED SUBGRADE WITH 6" PARABOLIC CROWN.
  - 2) PAVEMENT FOR ALLEYS SHALL CONSIST OF 4000 P.S.I. REINFORCED CONCRETE AND 6" LIME-STABILIZED SUBGRADE WITH 5" INVERT. TYPICAL ALLEY SECTION WILL BE 7'-5"-7'.
  - 3) CONTRACTOR TO RUN LIME SERIES BEFORE CONSTRUCTION.



**BENCHMARK:** ELEV. = 600.69  
CITY OF ROCKWALL R-19 BRASS MONUMENT AT THE N/W CORNER OF SILVERVIEW & DIAMOND WAY, 500' ± SOUTH OF S.H. 276.

**BENCHMARK:** ELEV. = 583.56  
R.R. SPIKE SET IN THE CENTERLINE OF S.H. 276 3600± WEST OF F.M. 549



Winkelmann & Associates, Inc. hereby states that this plan, to the best of our knowledge, is a true and correct representation of the original approved construction documents. Modifications have been made on the information provided by the contractor. Winkelmann & Associates, Inc. does not warrant the accuracy or completeness of the information provided by the contractor. Winkelmann & Associates, Inc. does not hold inspection or approval authority for construction as no field inspection was performed.

*W. Winkelmann*  
WINKELMANN & ASSOCIATES, INC. DATE: 5/14/04

THESE CONSTRUCTION PLANS WERE PREPARED UNDER THE RESPONSIBLE SUPERVISION OF MD. NAIM UDDIN KHAN, REGISTERED PROFESSIONAL ENGINEER NO. 87776

THE SEAL APPEARING ON THIS DOCUMENT WAS AUTHORIZED BY MD. NAIM UDDIN KHAN, # 87776

**Winkelmann & Associates, Inc.**  
CONSULTING CIVIL ENGINEERS & SURVEYORS  
6720 Hillcrest Plaza Drive, Suite 100  
Dallas, Texas 75230 (972) 485-7990 Fax (972) 485-7999

LOFLAND FARMS, PHASE 5A  
CITY OF ROCKWALL  
ROCKWALL COUNTY, TEXAS  
CONTINENTAL HOMES  
621 WEST COLLEGE STREET  
GRAPEVINE, TEXAS 76051

**PAVING PLAN & PROFILE**  
**HARVESTER DRIVE**  
STA. 0+00 TO STA. 8+00  
**PAVING PLAN - ALLEY 2 STA. 0+00 TO 1+00**  
**PAVING PLAN - ALLEY 5 STA. 7+50 TO 8+46.33**  
**PAVING PLAN - ALLEY 8 STA. 0+00 TO 8+00**

Scale: 1"=40' Date: 3/24/03  
Designed By: RB  
Drawn By: MK  
Checked By: MK  
File: 320045A(P&P).DWG View:  
Project No.: 32004.01

**SHEET**  
**7**  
**OF**  
**35**