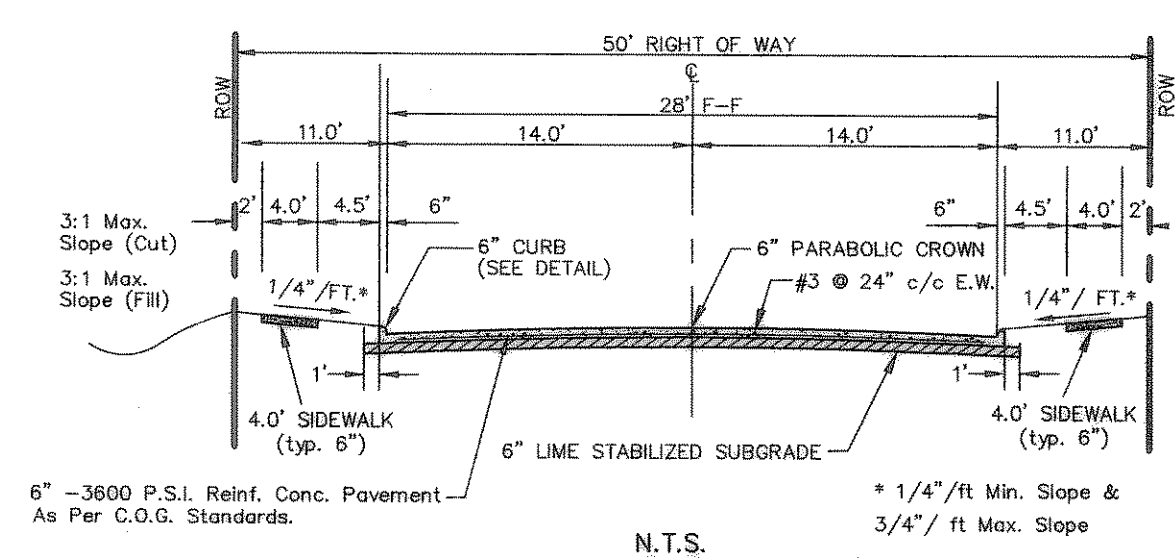
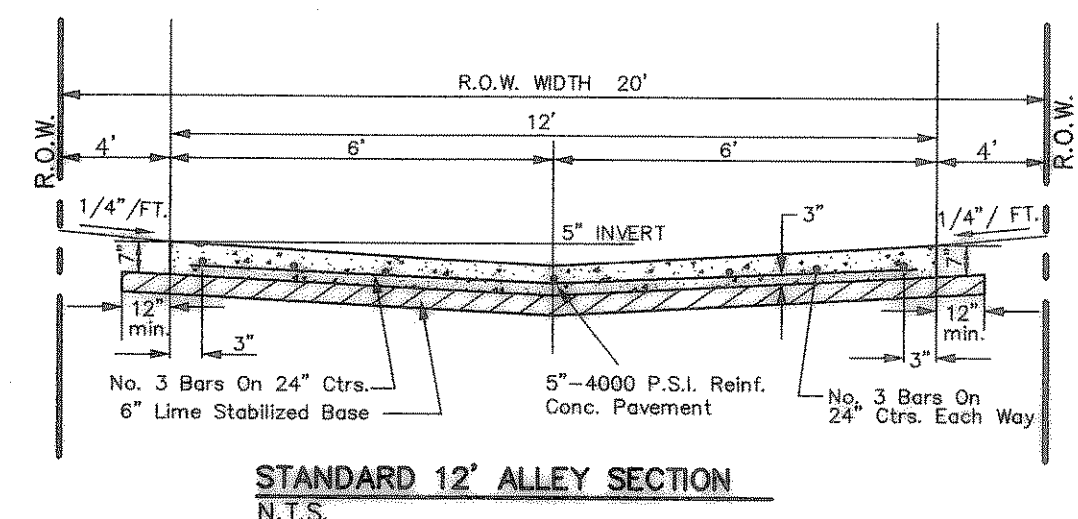


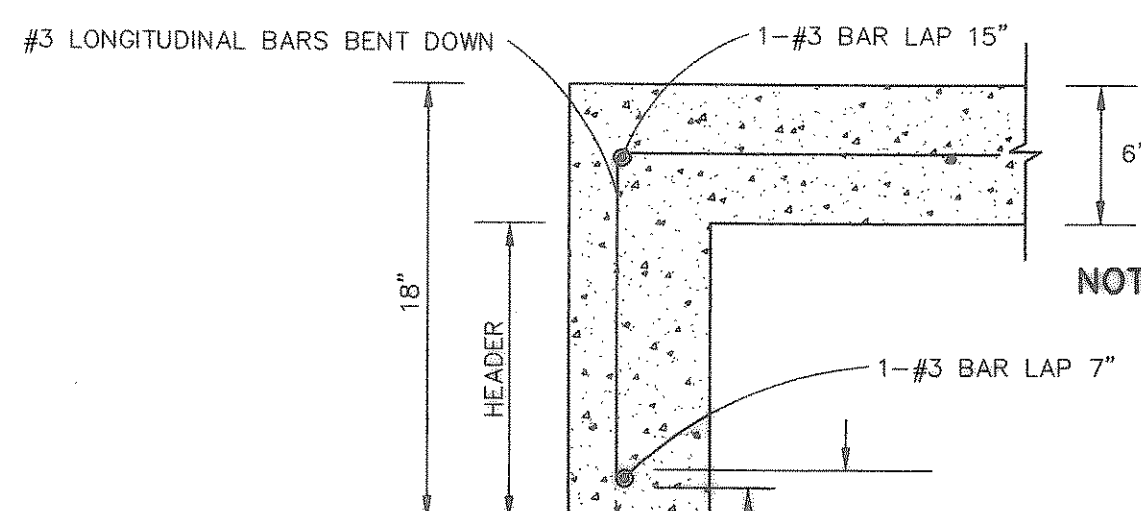
TYPICAL ALLEY WARPING AT INLET  
N.T.S.



TYPICAL PAVEMENT SECTION (29' B-B)  
N.T.S.

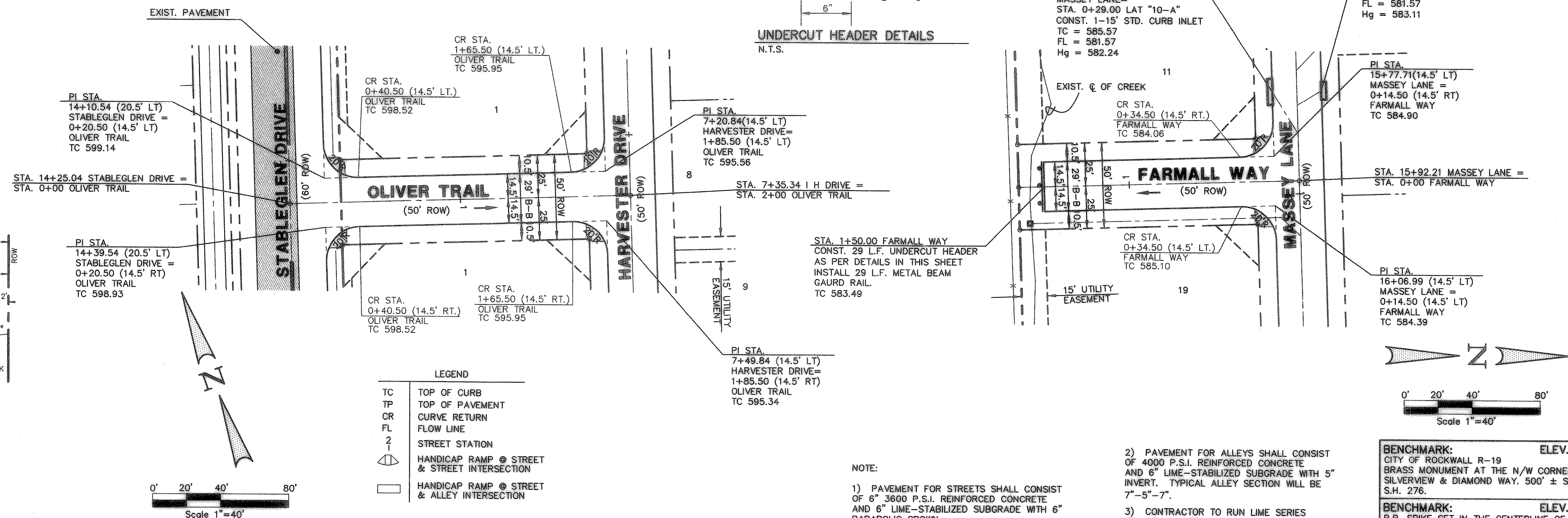


STANDARD 12' ALLEY SECTION  
N.T.S.



UNDERCUT HEADER DETAILS  
N.T.S.

NOTE: POUR HEADER INTEGRAL WITH PAVING



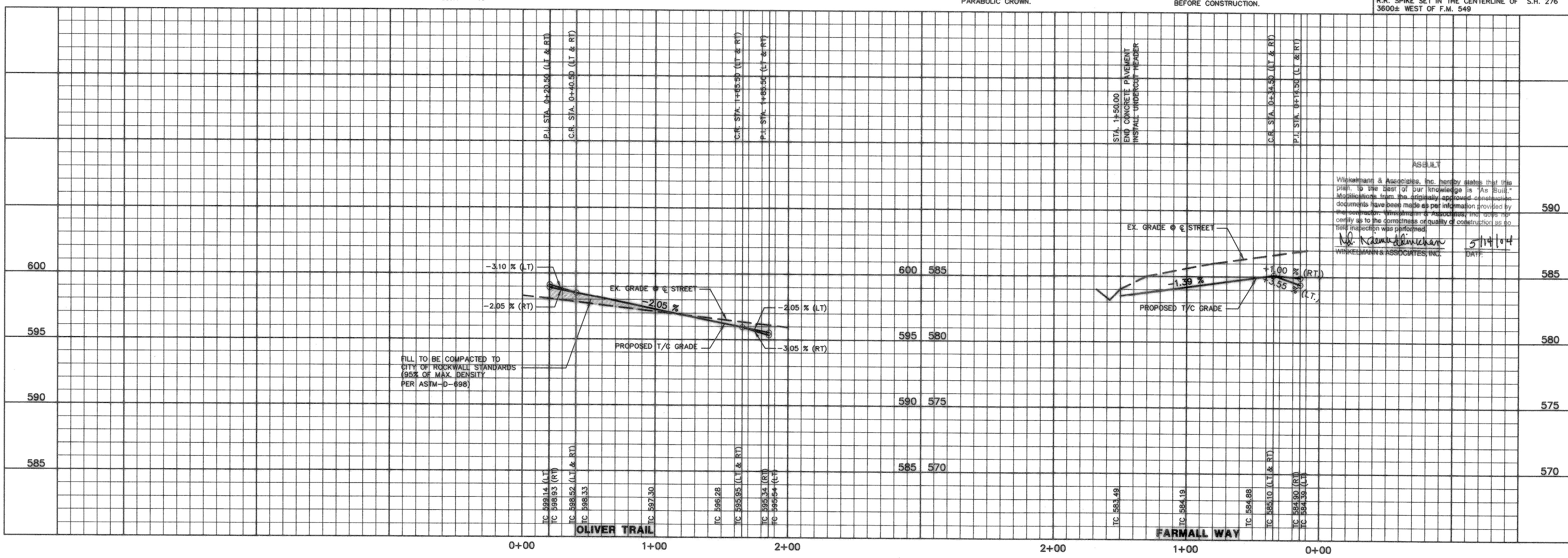
LEGEND

TC	TOP OF CURB
TP	TOP OF PAVEMENT
CR	CURVE RETURN
FL	FLOW LINE
2	STREET STATION
	HANDICAP RAMP @ STREET & STREET INTERSECTION
	HANDICAP RAMP @ STREET & ALLEY INTERSECTION

- NOTE:
- 1) PAVEMENT FOR STREETS SHALL CONSIST OF 4000 P.S.I. REINFORCED CONCRETE AND 6" LIME-STABILIZED SUBGRADE WITH 5" INVERT. TYPICAL ALLEY SECTION WILL BE 7"-5"-7".
  - 2) PAVEMENT FOR ALLEYS SHALL CONSIST OF 4000 P.S.I. REINFORCED CONCRETE AND 6" LIME-STABILIZED SUBGRADE WITH 5" INVERT. TYPICAL ALLEY SECTION WILL BE 7"-5"-7".
  - 3) CONTRACTOR TO RUN LIME SERIES BEFORE CONSTRUCTION.

BENCHMARK: ELEV. = 600.69  
CITY OF ROCKWALL R-19  
BRASS MONUMENT AT THE N/W CORNER OF SILVERVIEW & DIAMOND WAY. 500' ± SOUTH OF S.H. 276.

BENCHMARK: ELEV. = 583.56  
R.R. SPIKE SET IN THE CENTERLINE OF S.H. 276  
3600± WEST OF F.M. 549



ASSURED  
Winkelmann & Associates, Inc. hereby states that this plan, to the best of our knowledge is "As Built." Modifications from the originally approved documents have been made as per information provided by the contractor. Winkelmann & Associates, Inc. does not certify as to the correctness or quality of construction as no field inspection was performed.  
*W. Winkelmann* 5/14/04  
WINKELMANN & ASSOCIATES, INC. DATE

THESE CONSTRUCTION PLANS WERE PREPARED UNDER THE RESPONSIBLE SUPERVISION OF  
MD. NAIM UDDIN KHAN, REGISTERED PROFESSIONAL ENGINEER NO. 87776

THE SEAL APPEARING ON THIS DOCUMENT WAS AUTHORIZED BY  
MD. NAIM UDDIN KHAN, # 87776

APPROV. REVISION NO. DATE

**Winkelman & Associates, Inc.**  
CONSULTING CIVIL ENGINEERS & SURVEYORS  
6730 Hillcrest Plaza Drive, Suite 100  
Dallas, Texas 75230  
(972) 460-7000  
(972) 460-7009 FAX

W.H. Naim Uddin Khan 9/15/03  
LOFLAND FARMS, PHASE 5A  
BAIRD SURVEY, ABSTRACT NO. 25  
CITY OF ROCKWALL  
ROCKWALL COUNTY, TEXAS  
CONTINENTAL HOMES  
621 WEST COLLEGE STREET  
GRAPEVINE, TEXAS 76051

PAVING PLAN & PROFILE  
OLIVER TRAIL  
0+00 TO STA. 2+00  
FARMALL WAY  
FARMALL WAY STA. 0+00 TO 1+65.00

Scale: 1" = 40'  
Date: 09-04-03  
Designed By: RB  
Drawn By: MK  
Checked By: MK  
File: 320045A(2)DWG View:  
Project No.: 32004.01

SHEET  
12  
OF  
35