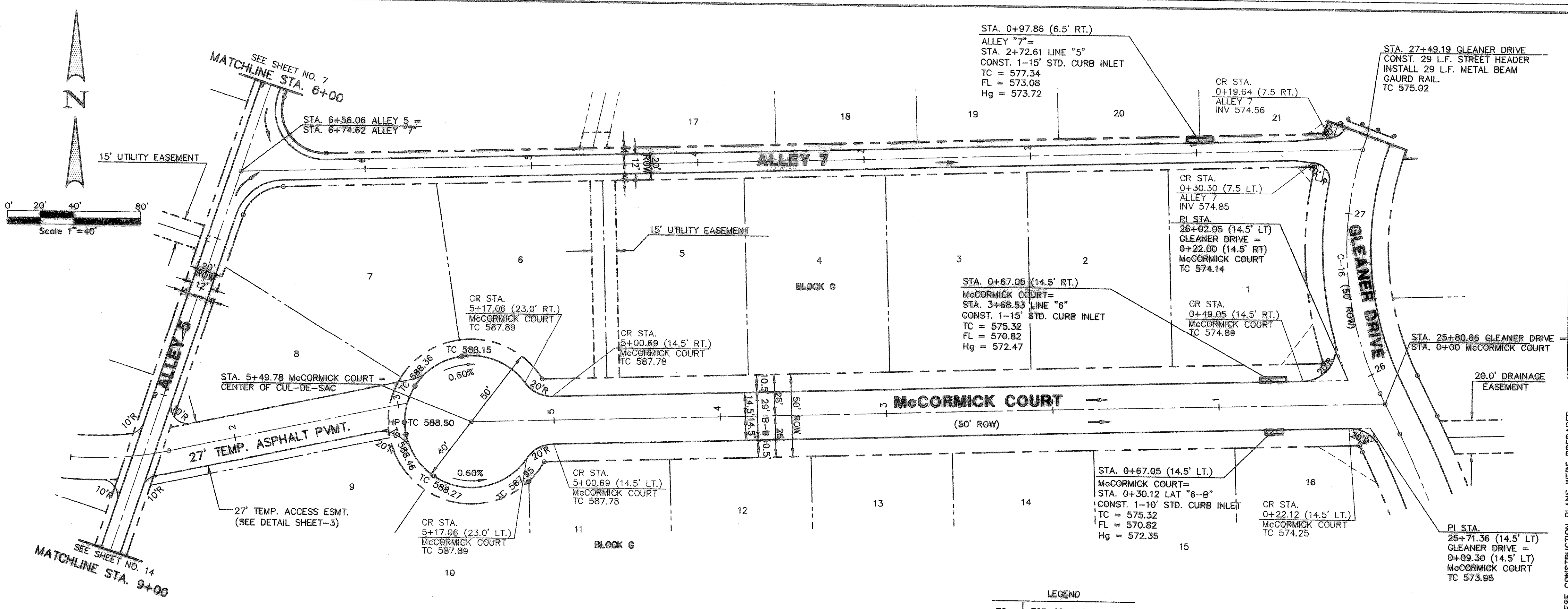


NOTE:  
 1) PAVEMENT FOR STREETS SHALL CONSIST OF 6\"/>

2) PAVEMENT FOR ALLEYS SHALL CONSIST OF 4000 P.S.I. REINFORCED CONCRETE AND 6\"/>



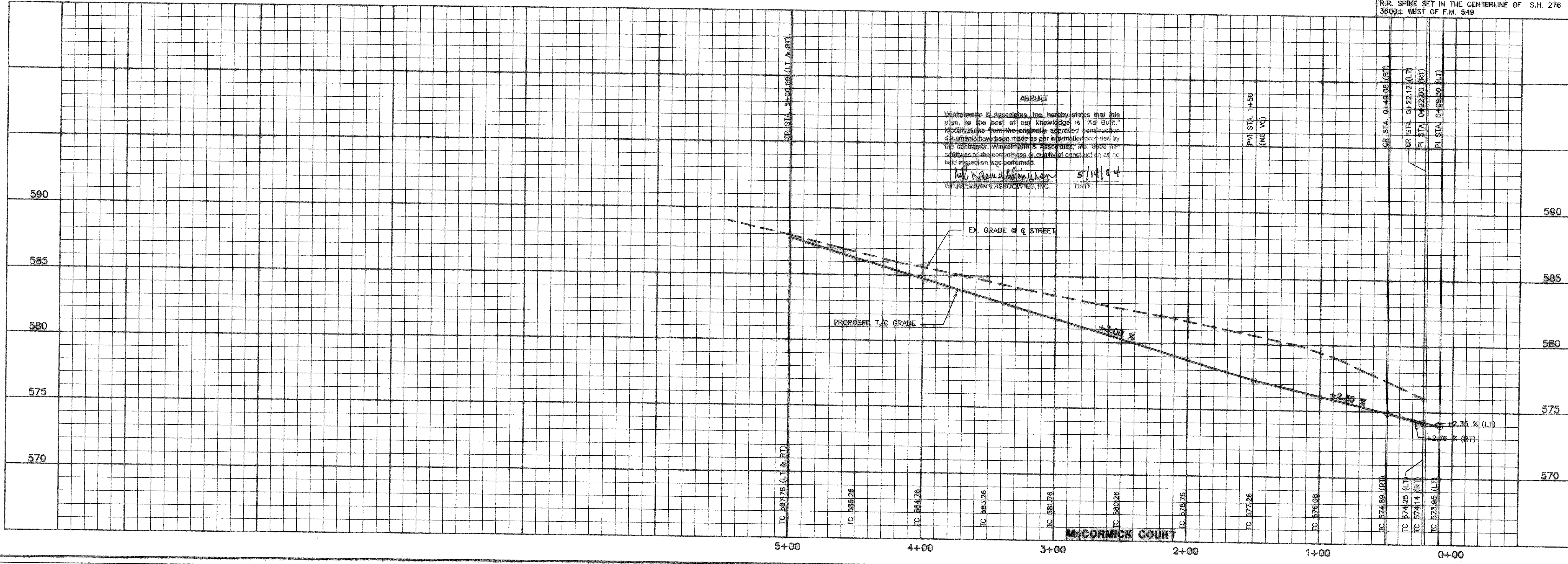
CURVE REPORT

CURVE	RADIUS	DELTA	TANGENT	LENGTH	CHORD	BEARING
C-16	200.00'	46°16'34\"/>				

- LEGEND
- TC TOP OF CURB
  - TP TOP OF PAVEMENT
  - CR CURVE RETURN
  - FL FLOW LINE
  - STREET STATION
  - HANDICAP RAMP @ STREET & STREET INTERSECTION
  - HANDICAP RAMP @ STREET & ALLEY INTERSECTION

BENCHMARK: ELEV. = 600.69  
 CITY OF ROCKWALL R-19 BRASS MONUMENT AT THE N/W CORNER OF SILVERVIEW & DIAMOND WAY, 500' ± SOUTH OF S.H. 276.

BENCHMARK: ELEV. = 583.58  
 R.R. SPIKE SET IN THE CENTERLINE OF S.H. 276 3600± WEST OF F.M. 549



Winkelmann & Associates, Inc. hereby states that this plan, to the best of our knowledge is "As Built." Modifications from the originally approved construction documents have been made as per information provided by the contractor, Winkelmann & Associates, Inc. upon verification of the correctness or quality of construction as no field inspection was performed.

W. Winkelmann 5/14/04  
 WINKELMANN & ASSOCIATES, INC. DRAFT

APPROVED: [Signature]

REVISION: [Table]

DATE: 9/04/03

DESIGNED BY: RB  
 DRAWN BY: MS  
 CHECKED BY: NK  
 FILE: 320045AP11.DWG / View:  
 PROJECT NO.: 32004-01

THESE CONSTRUCTION PLANS WERE PREPARED UNDER CONTRACT NO. 25 BY W.H. UDDIN KHAN, REGISTERED PROFESSIONAL ENGINEER NO. 87776

THE SEAL APPEARING ON THIS DOCUMENT WAS AUTHORIZED BY MD. NAIM UDDIN KHAN, # 87776

Winkelmann & Associates, Inc.  
 CONSULTING CIVIL ENGINEERS & SURVEYORS  
 620 Internal Pass Drive, Suite 100  
 Rockwall, Texas 75087  
 (972) 467-1999 Fax (972) 467-1998

LORLAND FARMS PHASE 5A  
 W.H. UDDIN KHAN, REGISTERED PROFESSIONAL ENGINEER NO. 87776  
 ROCKWALL COUNTY, TEXAS

CONTINENTAL HOMES  
 621 WEST COLLEGE STREET  
 GRAPEVINE, TEXAS 75051

PAVING PLAN & PROFILE  
 McCORMICK COURT  
 STA. 0+00 TO STA. 6+49.78  
 PAVING PLAN - ALLEY 5 STA. 6+00 TO 9+00  
 PAVING PLAN - ALLEY 7 STA. 0+00 TO 6+74.62

SHEET 11 OF 35