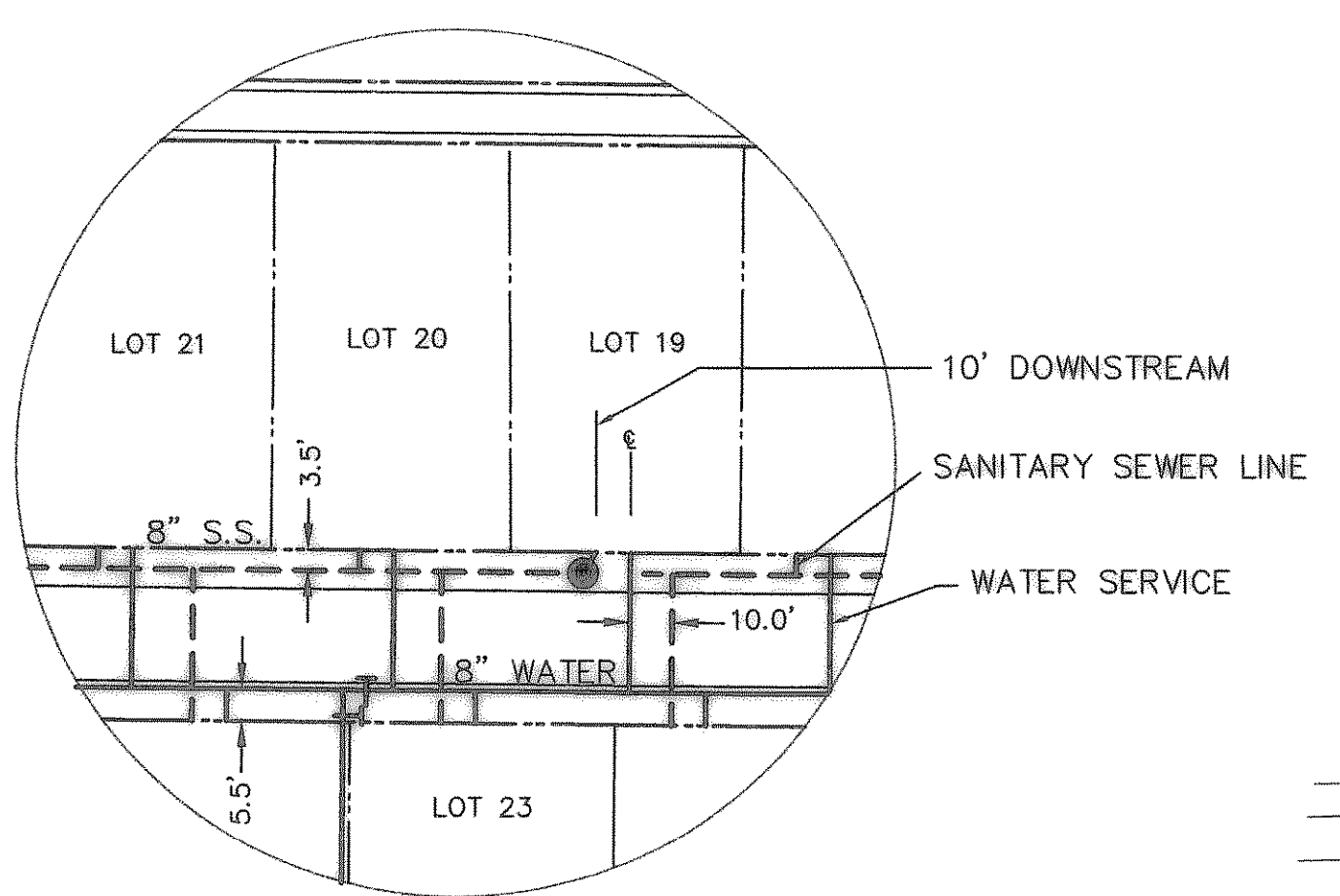


NOTE:
 1. WATER LINE LOCATED 5' BACK OF CURB.
 2. SANITARY SEWER LOCATED 7' BACK OF CURB.
 3. ALL SEWER SERVICES ARE 4".
 4. ALL WATER SERVICES ARE 1" POLYETHYLENE.
 5. ALL WATER AND SEWER LINE TO BE CLASS 200 C-900 DR 14 PVC.
 6. SEWER LINE:
 A. COVER ABOVE THE PIPE > 10' USE SDR 26 PVC
 B. COVER ABOVE THE PIPE < 10' USE SDR 35 PVC



NOTE:
 SANITARY SEWER SERVICES ARE TO BE INSTALLED AT THE TIME OF CONSTRUCTION OF LINE "B" FOR FUTURE LOTS ON PHASE 5B

APPROV. _____
 REVISION _____
 NO. _____ DATE _____
 04/08/04

THESE CONSTRUCTION PLANS WERE PREPARED UNDER THE RESPONSIBLE SUPERVISION OF
 MD. NAIM UDDIN KHAN, REGISTERED PROFESSIONAL ENGINEER NO. 87776
 DATE: 4/8/04

THE SEAL APPEARING ON THIS DOCUMENT WAS AUTHORIZED BY
 MD. NAIM UDDIN KHAN, # 87776

Winkelman & Associates, Inc. hereby states that this plan, to the best of our knowledge is "As Built." Modifications from the originally approved construction documents have been made as per information provided by the contractor, Winkelman & Associates, Inc. does not certify as to the correctness or quality of construction as no field inspection was performed.
 Winkelman & Associates, Inc. 5/14/04
 DATE

LOFLAND FARMS, PHASE 5A
 BARD CITY, TEXAS
 ROCKWALL COUNTY, TEXAS

CONTINENTAL HOMES
 621 WEST COLLEGE STREET
 GRAPEVINE, TEXAS 76051

WATER & SANITARY SEWER PLAN

Scale: 1"=60'
 Date: 11/06/03
 Designed By: MK
 Drawn By: MK
 Checked By: NK
 File: 320045A\SWSDWG
 Project No.: 32004.01

BENCHMARK: ELEV. = 600.89
 CITY OF ROCKWALL R-19
 BRASS MONUMENT AT THE N/W CORNER OF
 SILVERVIEW & DIAMOND WAY, 500' ± SOUTH OF
 S.H. 276.
 BENCHMARK: ELEV. = 583.56
 R.R. SPIKE SET IN THE CENTERLINE OF S.H. 276
 3800' ± WEST OF F.M. 549

SHEET
 26
 OF
 35

LOFLAND FARMS
 PHASE 2

FUTURE
 LOFLAND FARMS
 PHASE 5-B

LOT SERVICES
 N.T.S.

PRC STA. 5+89.45

STA. 29+21.34 (21.50 RT)
 GLEANER DRIVE =
 STA. 6+70.16 LINE B
 CONST. STD 4" DIA M.H.
 W/10' STUBOUT @ .035%
 RIM 576.20

STA. 25+47.74 (21.50 RT)
 GLEANER DRIVE =
 STA. 3+16.23 LINE B =
 STA. 0+00 LINE C
 CONST. STD 4" DIA M.H.
 RIM 573.96

STA. 22+69.13 (44.70 RT)
 MASSEY LANE =
 STA. 0+00 LINE B
 CONST. STD 4" DIA M.H.
 RIM 569.50

STA. 12+88.83 LINE E =
 STA. 0+63.62 LINE A =
 STA. 6+63.34 (41.65 RT)
 ALLEY 4
 REFER TO ROCKWALL TECHNOLOGY
 PARK PHASE II PLANS BY
 WER & ASSOCIATES FOR
 LIFT STATION INFORMATION.

REMOVE EXIST. 8" SAN. SEWER
 AND INSTALL 8" SAN. SEWER
 TO REFLECT NEW LIFT STATION
 LOCATION.

WATER CURVE TABLE

CURVE	RADIUS	DELTA	TANGENT	LENGTH	CHORD	BEARING
WTC-1	319.50'	20°01'25"	56.40'	111.66'	111.09'	N08°12'59"E
WTC-2	819.50'	28°38'23"	194.02'	381.03'	377.60'	N37°32'35"E
WTC-3	680.50'	34°09'08"	241.99'	485.00'	458.01'	N29°17'32"E
WTC-4	219.50'	48°16'34"	93.80'	172.28'	172.50'	S03°19'28"E
WTC-5	480.50'	24°40'54"	108.10'	206.54'	206.35'	S14°07'28"E
WTC-6	230.50'	18°56'38"	38.45'	76.21'	75.86'	S54°36'13"E

SANITARY SEWER CURVE TABLE

CURVE	RADIUS	DELTA	TANGENT	LENGTH	CHORD	BEARING
SSC-2	278.50'	20°01'25"	49.17'	97.33'	96.83'	N08°12'59"E
SSC-3	778.50'	28°38'23"	184.31'	361.96'	358.71'	N31°32'53"E
SSC-4	721.50'	39°28'27"	258.62'	496.86'	486.91'	N25°09'1"E
SSC-5	521.50'	24°40'54"	114.07'	224.65'	222.87'	N14°07'28"E
SSC-6	178.50'	74°42'59"	136.27'	232.72'	216.83'	N10°53'45"E
SSC-7	221.50'	50°01'33"	103.30'	193.40'	187.31'	N23°14'28"E
SSC-8	178.50'	22°51'40"	38.09'	71.22'	70.75'	N09°39'31"E
SSC-9	221.50'	22°51'40"	44.79'	88.38'	87.79'	N09°39'31"E
SSC-10	271.50'	46°38'24"	117.04'	221.01'	214.95'	N68°27'07"W

STA. 14+44.54 (25.5' RT)
 STABLEGLEN DRIVE
 CONN. TO EXIST. 12" WATER
 INSTALL:
 1-12"XB" TAPPING SLEEVE & VALVE

INSTALL:
 30 LF OF 12" STEEL ENCASMENT
 BY DRY BORE PER TxDOT
 ITEM NO. 476

STA. 7+54.84 (19.5' RT)
 HARVESTER DRIVE
 INSTALL:
 1-8" X 8" TEE
 3-8" GATE VALVES

STA. 7+69.84 (19.5' RT)
 HARVESTER DRIVE
 INSTALL:
 1-8" X 8" X 6" TEE
 1-8" GATE VALVE
 1-8" GATE VALVE
 1-FIRE HYDRANT
 WITH 6" LEAD

STA. 8+19.19 (21.50 LT)
 HARVESTER DRIVE =
 STA. 16+50 LINE A
 CONST. STD 4" DIA M.H.
 RIM 594.89

STA. 7+04.05
 ALLEY 5
 INSTALL:
 1-8" 90° BEND

STA. 5+49.78 (21.50 LT)
 MCCORMICK COURT =
 STA. 5+85.00 LINE C
 CONST. STD 4" DIA M.H.
 RIM 588.04

STA. 4+67.63 (19.5' RT)
 MCCORMICK COURT
 INSTALL:
 1-8" X 8" TEE
 2-8" GATE VALVES

STA. 2+86.65 (21.50 LT)
 MCCORMICK COURT =
 STA. 3+00 LINE C
 CONST. STD 4" DIA M.H.
 RIM 580.86

STA. 25+47.74 (21.50 RT)
 GLEANER DRIVE =
 STA. 3+16.23 LINE B =
 STA. 0+00 LINE C
 CONST. STD 4" DIA M.H.
 RIM 573.96

STA. 12+84.00 (19.5' LT)
 MASSEY LANE
 INSTALL:
 1-8" X 6" TEE
 1-8" GATE VALVE
 1-FIRE HYDRANT
 WITH 6" LEAD

STA. 15+52.80 (21.50 RT)
 MASSEY LANE =
 STA. 9+00 LINE A
 CONST. STD 4" DIA M.H.
 RIM 585.49

STA. 15+72.71 (19.5' LT)
 MASSEY LANE
 INSTALL:
 1-8" X 8" TEE
 3-8" GATE VALVES

STA. 18+80.54 (19.5' LT)
 MASSEY LANE
 INSTALL:
 1-8" X 6" TEE
 1-8" GATE VALVE
 1-FIRE HYDRANT
 WITH 6" LEAD

STA. 22+86.23 (19.5' LT)
 GLEANER DRIVE
 INSTALL:
 1-8" X 6" TEE
 1-8" GATE VALVE
 1-FIRE HYDRANT
 WITH 6" LEAD

STA. 12+39.16 (21.54' RT)
 HARVESTER DRIVE
 INSTALL:
 1-8" 90° BEND

STA. 12+78.14 (22.99 RT)
 MASSEY LANE =
 STA. 11+81.89 LINE A
 CONST. STD 4" DIA M.H.
 RIM 560.22

STA. 19+53.90 (21.50 RT)
 MASSEY LANE =
 STA. 5+00 LINE A
 CONST. STD 4" DIA M.H.
 RIM 577.72

STA. 22+69.13 (13.29' LT)
 MASSEY LANE
 INSTALL:
 1-8" 90° BEND
 1-8" GATE VALVE

STA. 22+48.65 (22.54' RT)
 MASSEY LANE =
 STA. 2+00 LINE A =
 STA. 0+45.14 LINE B
 CONST. STD 4" DIA M.H.
 RIM 573.88

STA. 1+11.31 LINE E =
 STA. 7+43.10 (28.19' RT)
 ALLEY 3
 CONN. TO EXIST. MANHOLE
 (BY OTHERS)

STA. 0+34.50 (19.5' RT)
 FARMALL WAY
 INSTALL:
 1-8" X 8" TEE
 1-8" GATE VALVE
 1-FIRE HYDRANT
 WITH 6" LEAD

STA. 1+85.00 (19.5' RT)
 FARMALL WAY
 INSTALL:
 1-8" GATE VALVE
 1-8" PLUG

BENCHMARK: ELEV. = 600.89
 CITY OF ROCKWALL R-19
 BRASS MONUMENT AT THE N/W CORNER OF
 SILVERVIEW & DIAMOND WAY, 500' ± SOUTH OF
 S.H. 276.
 BENCHMARK: ELEV. = 583.56
 R.R. SPIKE SET IN THE CENTERLINE OF S.H. 276
 3800' ± WEST OF F.M. 549