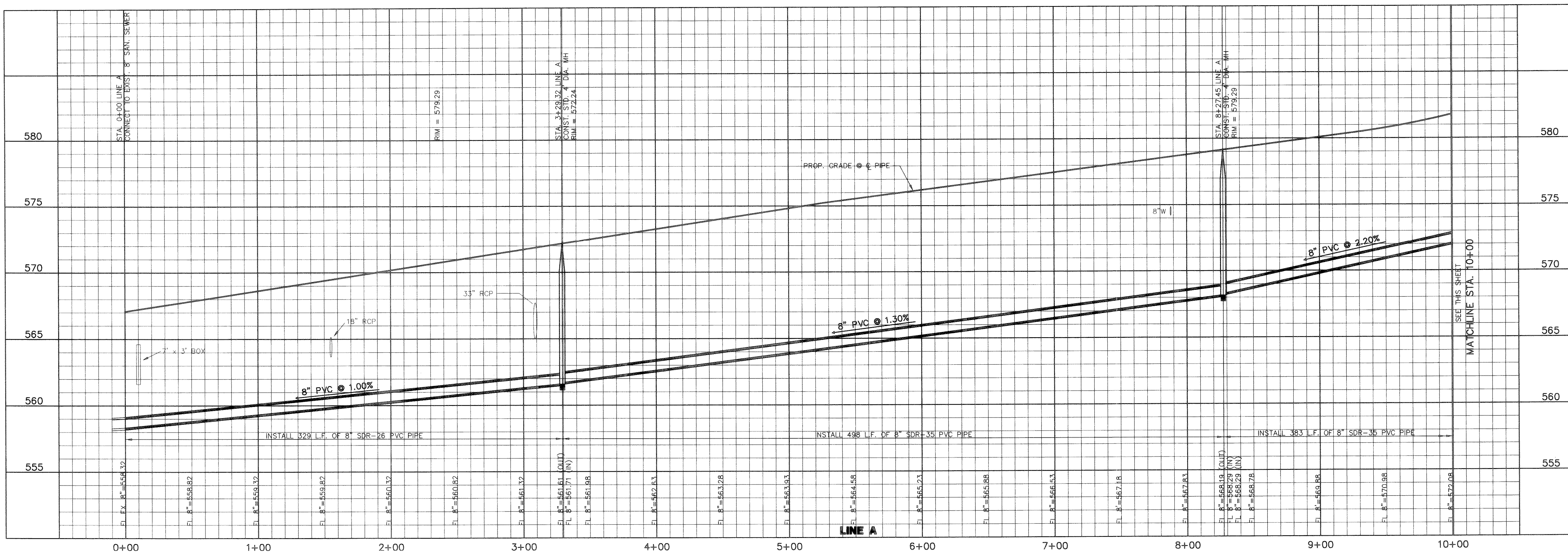
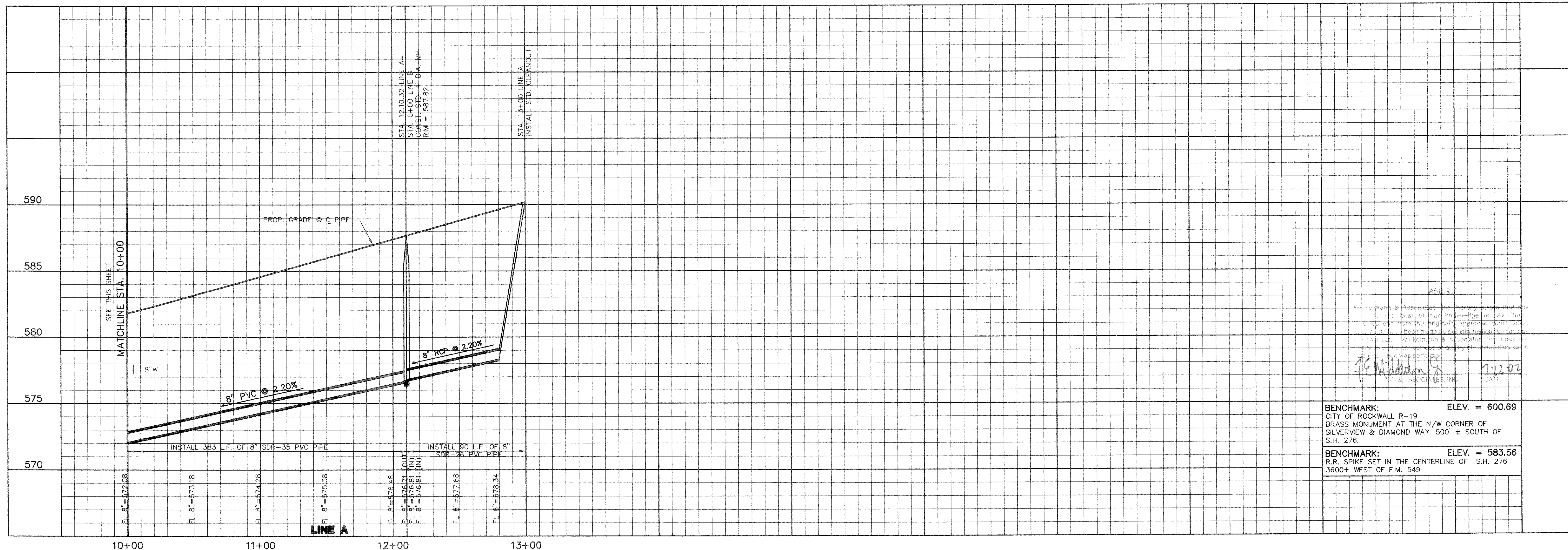


C:\RUSSELL\3200245SP.dwg Mon Nov 19 09:47:46 2001 RUSSELL



ASBUILT
 Winkelman & Associates, Inc. hereby states that this is the best of our knowledge as built. It is based on the original approved construction plans and field observations. We do not warrant the accuracy of the as-built information. We are not responsible for any errors or omissions in this document. The user of this document is advised to verify all information before use.
 J. Winkelman
 11-20-01

BENCHMARK: ELEV. = 600.69
 CITY OF ROCKWALL R-19
 BRASS MONUMENT AT THE N/W CORNER OF
 SILVERVIEW & DIAMOND WAY, 500' ± SOUTH OF
 S.H. 276.
 BENCHMARK: ELEV. = 583.56
 R.R. SPIKE SET IN THE CENTERLINE OF S.H. 276
 3600'± WEST OF F.M. 549

Scale: 1" = 4'-0"
 Date: 3-2-01
 Designed By: RB
 Drawn By: MK
 Checked By: FEM
 File: 3200245SP.DWG View:
 Project No.: 3200201

SANITARY SEWER PROFILE
LINE A - STA. 0+00 TO STA. 13+00

LOFLAND FARMS, PHASE 4
 W.H. BAIRD SURVEY, ABSTRACT NO. 25
 CITY OF ROCKWALL
 ROCKWALL COUNTY, TEXAS
 CONTINENTAL HOMES
 621 WEST COLLEGE STREET
 GRAPEVINE, TEXAS 76051

NO. DATE REVISION APPROV.

Winkelman & Associates, Inc.
 CONSULTING CIVIL ENGINEERS & SURVEYORS
 6200 Hillview Plaza Dr., Suite 100
 Rockwall, TX 75087
 (972) 962-9292
 www.winkelman.com

SHEET
 18
 OF
 24