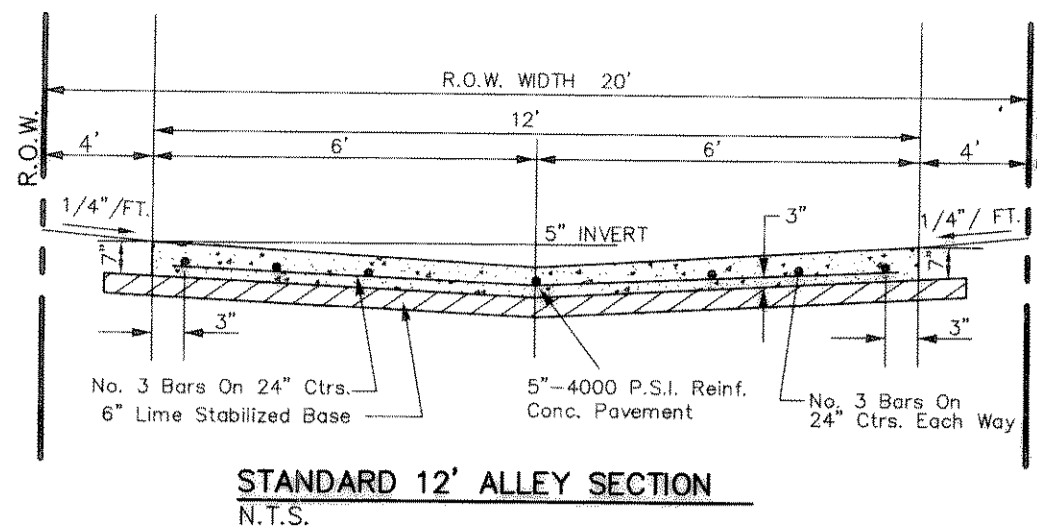
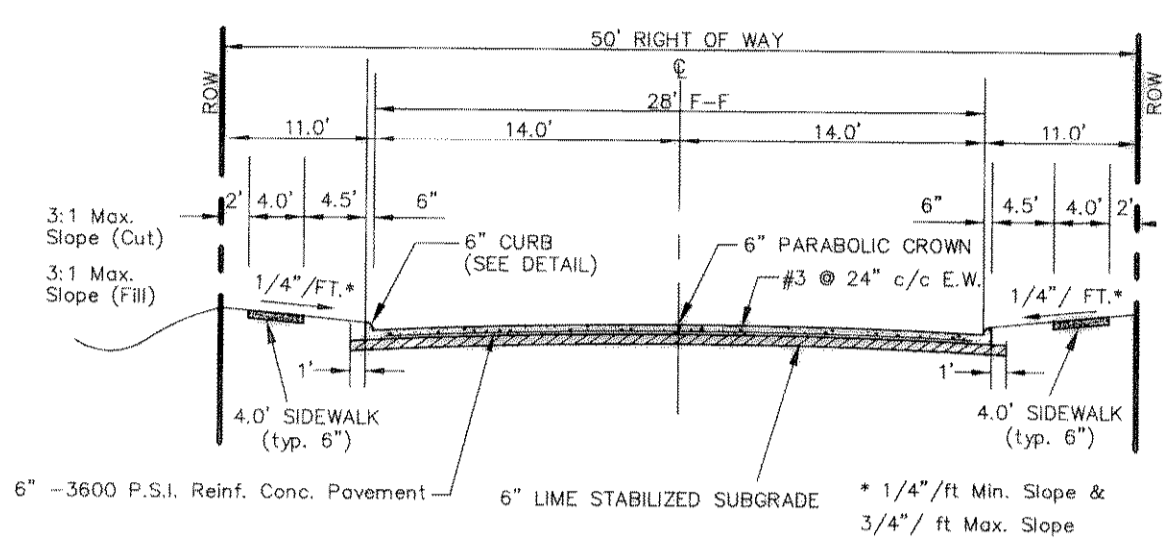


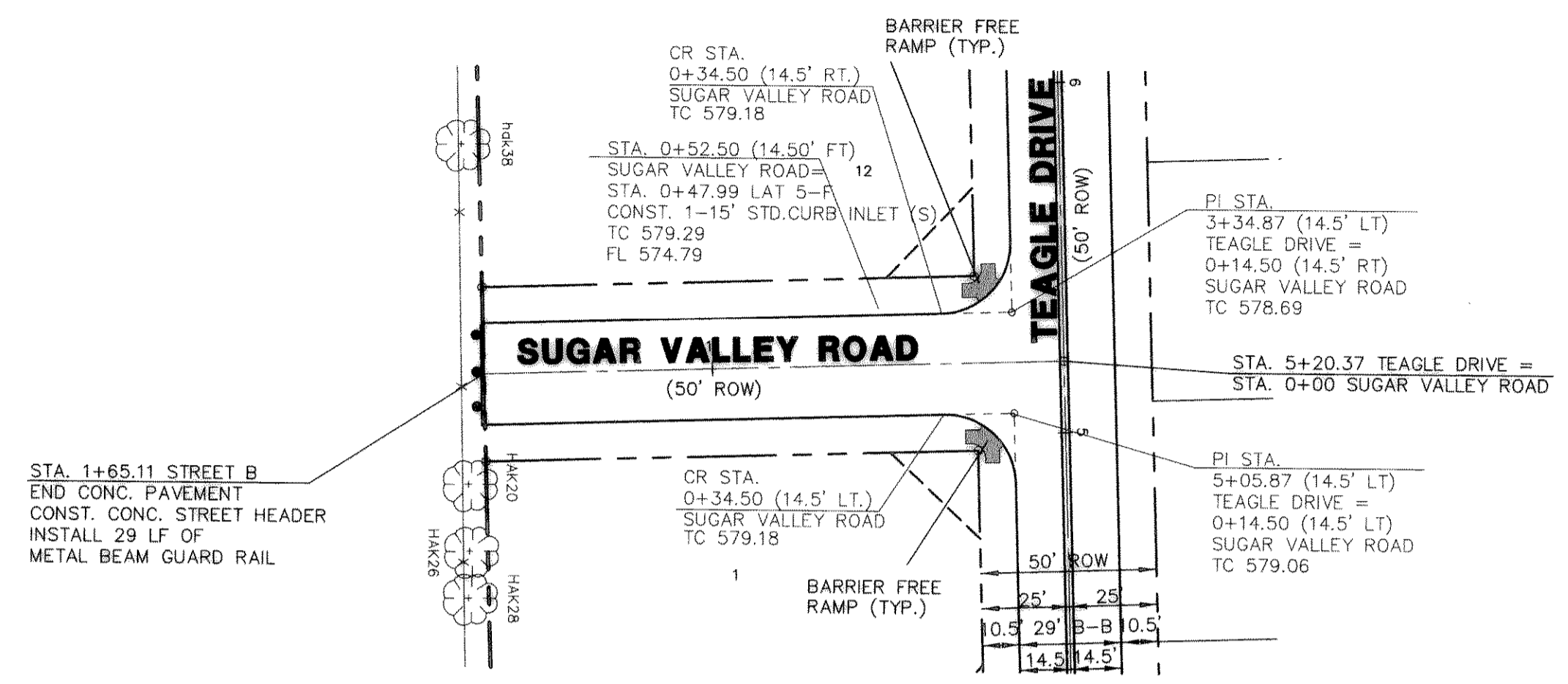
TYPICAL ALLEY WARPING AT INLET  
N.T.S.



STANDARD 12' ALLEY SECTION  
N.T.S.

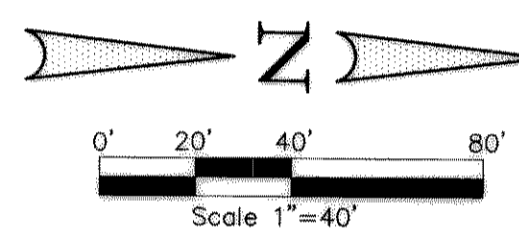


TYPICAL PAVEMENT SECTION (29' B-B)  
N.T.S.



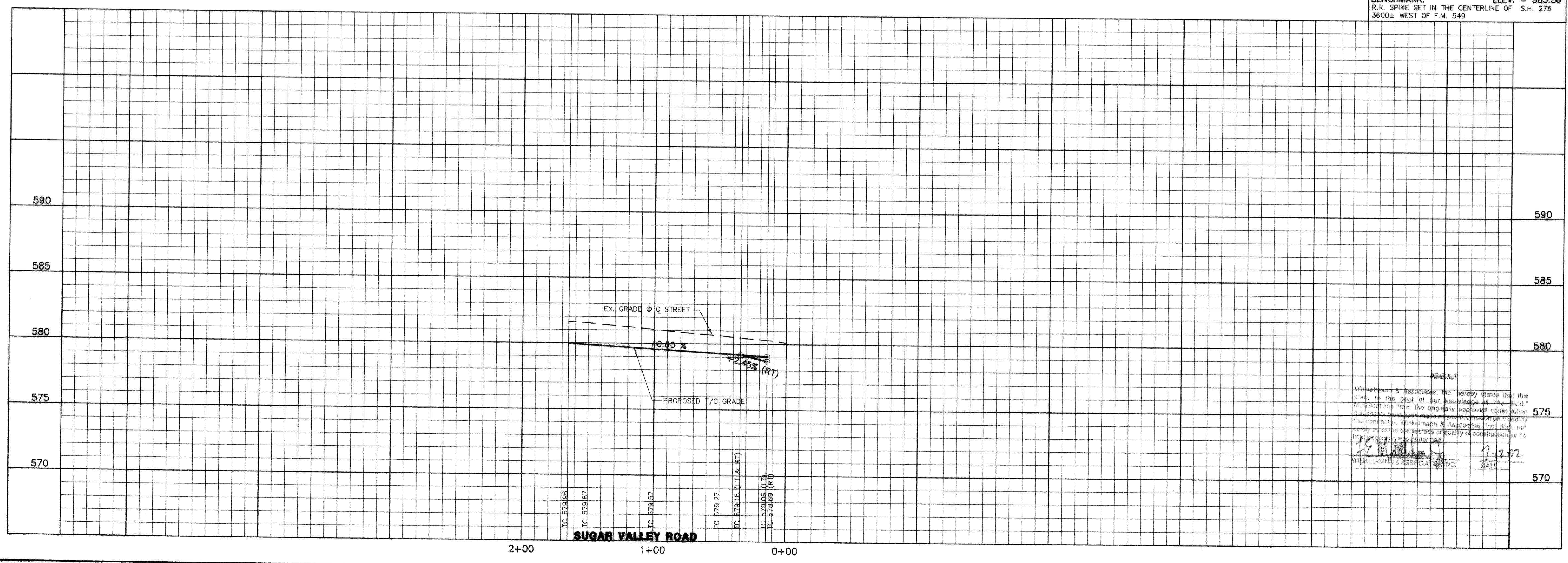
NOTE:

- 1) PAVEMENT FOR STREETS SHALL CONSIST OF 6" 3600 P.S.I. REINFORCED CONCRETE AND 6" LIME-STABILIZED SUBGRADE WITH 6" PARABOLIC CROWN.
- 2) PAVEMENT FOR ALLEYS SHALL CONSIST OF 4000 P.S.I. REINFORCED CONCRETE AND 6" LIME-STABILIZED SUBGRADE WITH 5" INVERT. TYPICAL ALLEY SECTION WILL BE 7"-5"-7".
- 3) CONTRACTOR TO RUN LIME SERIES BEFORE CONSTRUCTION.



BENCHMARK: ELEV. = 600.69  
CITY OF ROCKWALL R-19  
BRASS MONUMENT AT THE N/W CORNER OF SILVERVIEW & DIAMOND WAY, 500' ± SOUTH OF S.H. 276.

BENCHMARK: ELEV. = 583.56  
R.R. SPIKE SET IN THE CENTERLINE OF S.H. 276  
3600± WEST OF F.M. 549



THESE CONSTRUCTION PLANS WERE PREPARED UNDER THE RESPONSIBLE SUPERVISION OF F.E. MIDDLETON, JR., REGISTERED PROFESSIONAL ENGINEER NO. 67449

F.E. Middleton, Jr. 10/28/01

THE SEAL APPEARING ON THIS DOCUMENT WAS AUTHORIZED BY F.E. MIDDLETON, JR., P.E. #67449

Winkelman & Associates, Inc.  
CONSULTING CIVIL ENGINEERS & SURVEYORS  
1875 Milliken Road, Suite 100  
Dallas, Texas 75233  
(972) 492-7900  
www.winkelman.com

LOFLAND FARMS, PHASE 4  
W.H. BAIRD SURVEY ABSTRACT NO. 25  
CITY OF ROCKWALL  
ROCKWALL COUNTY, TEXAS

CONTINENTAL HOMES  
621 WEST COLLEGE STREET  
GRAPEVINE, TEXAS 76051

**PAVING PLAN & PROFILE - SUGAR VALLEY ROAD  
STA. 0+00 TO STA. 1+65.11**

Scale: 1" = 40' Date: 3-2-01  
Designed By: RB  
Drawn By: MK  
Checked By: FEM  
File: 320024F6.DWG View:  
Project No.: 32002.01

Winkelman & Associates, Inc. hereby states that this plan, to the best of our knowledge, is the true and correct reproduction of the original approved construction documents. Winkelman & Associates, Inc. does not warrant the completeness or quality of construction as no independent verification was performed.

F.E. Middleton, Jr. 10/28/01  
WINKELMAN & ASSOCIATES, INC.