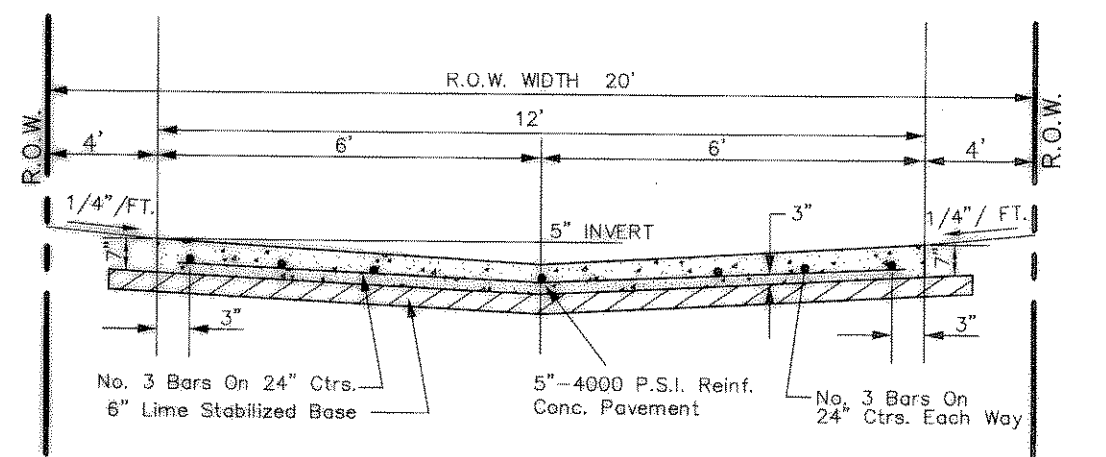
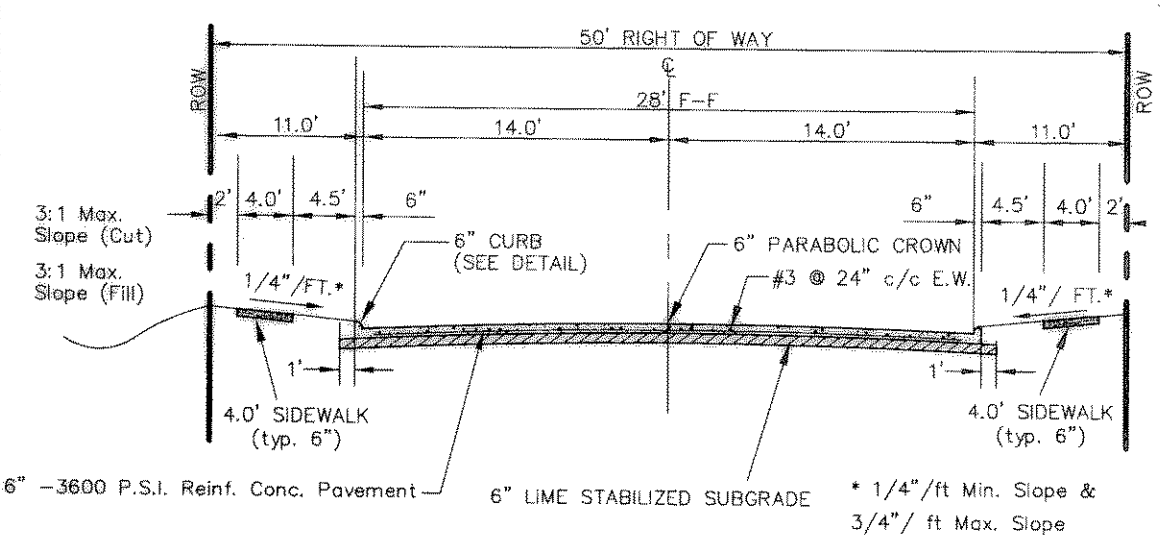


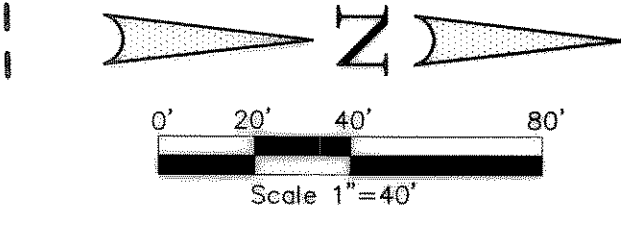
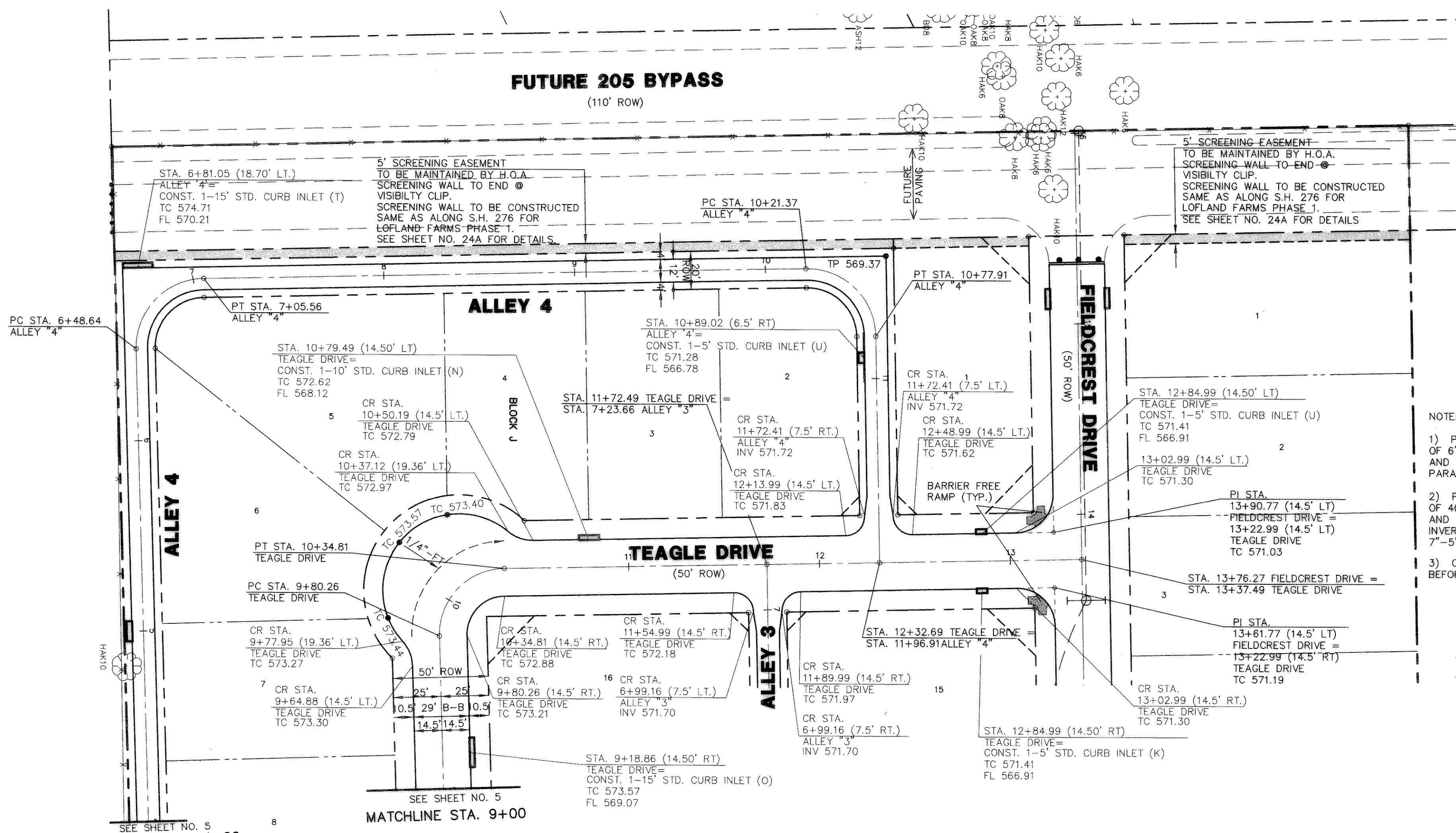
TYPICAL ALLEY WARPING AT INLET
N.T.S.



STANDARD 12' ALLEY SECTION
N.T.S.



TYPICAL PAVEMENT SECTION (29' B-B)
N.T.S.



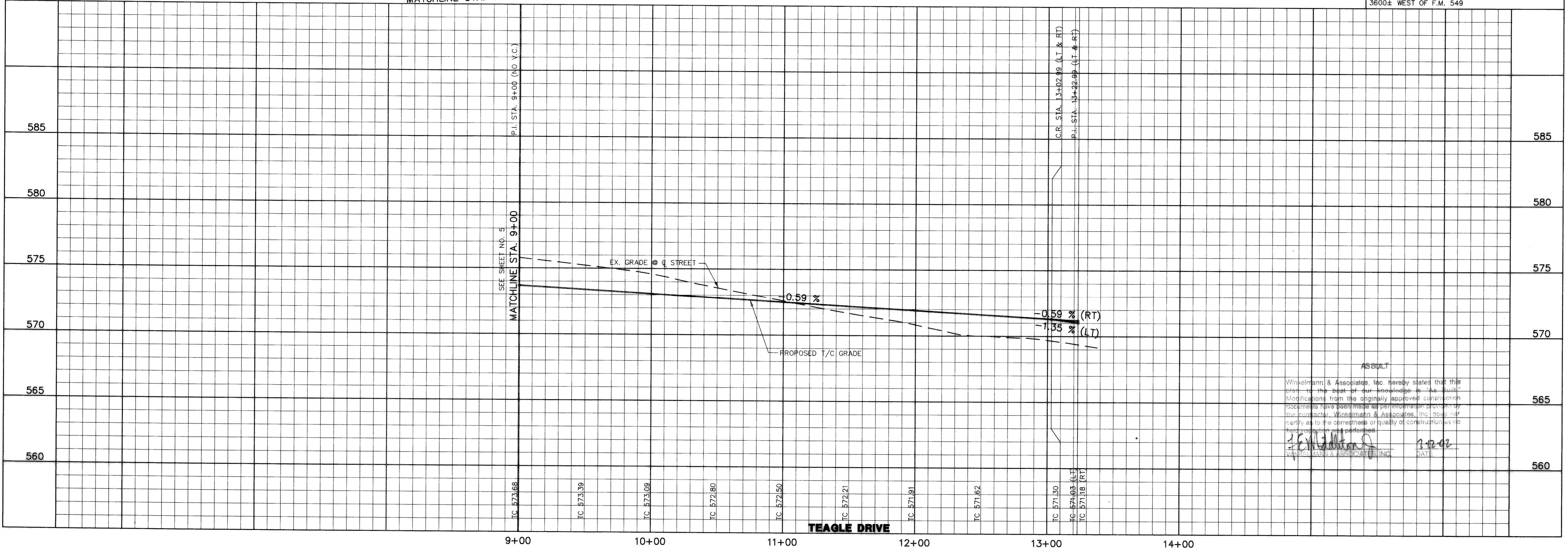
BENCHMARK: ELEV. = 600.69
CITY OF ROCKWALL R-19
BRASS MONUMENT AT THE N/W CORNER OF
SILVERVIEW & DIAMOND WAY. 500' ± SOUTH OF
S.H. 276.

BENCHMARK: ELEV. = 583.56
R.R. SPIKE SET IN THE CENTERLINE OF S.H. 276
3600± WEST OF F.M. 549

THESE CONSTRUCTION PLANS WERE PREPARED
UNDER THE RESPONSIBLE SUPERVISION OF
F.E. MIDDLETON, JR., REGISTERED PROFESSIONAL
ENGINEER NO. 67449.

THE SEAL APPEARING ON THIS
DOCUMENT WAS AUTHORIZED BY
F.E. MIDDLETON, JR., P.E. #67449

- NOTE:
- 1) PAVEMENT FOR STREETS SHALL CONSIST OF 6" 3600 P.S.I. REINFORCED CONCRETE AND 6" LIME-STABILIZED SUBGRADE WITH 6" PARABOLIC CROWN.
 - 2) PAVEMENT FOR ALLEYS SHALL CONSIST OF 4000 P.S.I. REINFORCED CONCRETE AND 6" LIME-STABILIZED SUBGRADE WITH 5" INVERT. TYPICAL ALLEY SECTION WILL BE 7'-5"-7".
 - 3) CONTRACTOR TO RUN LIME SERIES BEFORE CONSTRUCTION.



AS BUILT

Winkelman & Associates, Inc. hereby stated that the plan to the best of our knowledge is "as built" modifications from the originally approved calculations occurred to this point made by the contractor. Winkelman & Associates, Inc. does not certify as to the operation or quality of construction nor the construction performance.

[Signature] 1-12-02
DATE

NO.	DATE	REVISION	APPROVAL

LOFLAND FARMS, PHASE 4
W.H. BAIRD SURVEY, ABSTRACT NO. 25
CITY OF ROCKWALL
ROCKWALL COUNTY, TEXAS

CONTINENTAL HOMES
621 WEST COLLEGE STREET
GRAPEVINE, TEXAS 76051

PAVING PLAN & PROFILE - TEAGLE DRIVE
STA. 9+00 TO STA. 13+37.49
PAVING PLAN - ALLEY 4
STA. 4+00 TO STA. 11+96.91

Scale: 1" = 40'
Date: 1-12-02
Designed By: RB
Drawn By: MK
Checked By: FEM
File: 320024P4.DWG View:
Project No.: 32002-01

Winkelman & Associates, Inc.
CONSULTING CIVIL ENGINEERS • SURVEYORS
6750 Hillcrest Plaza Drive, Suite 100
Dallas, Texas 75230 (972) 445-7242
FAX (972) 480-7299 FAX
www.winkelman.com