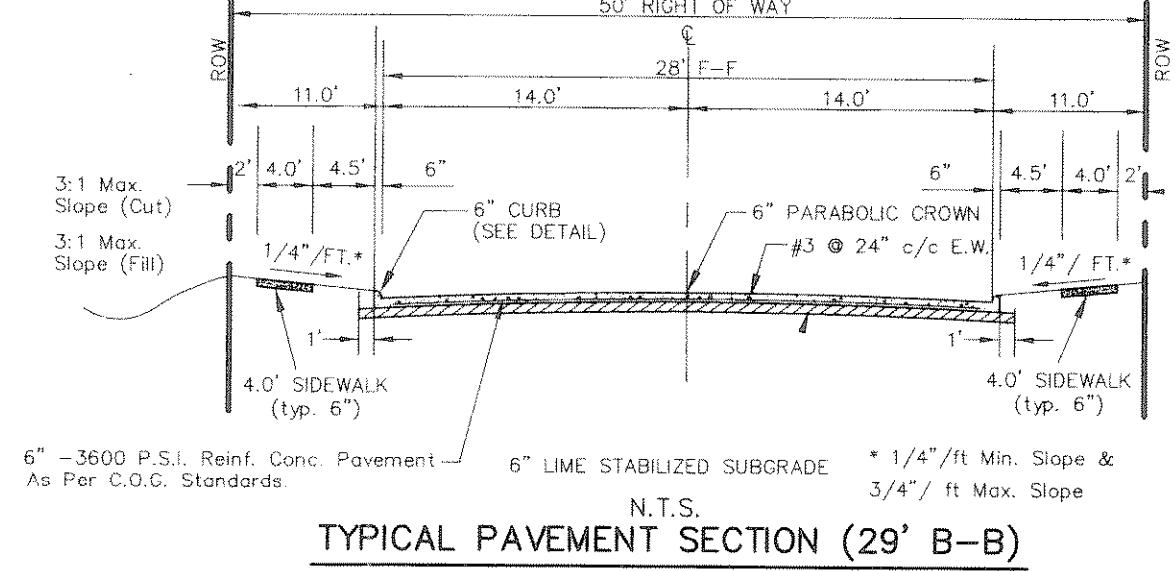
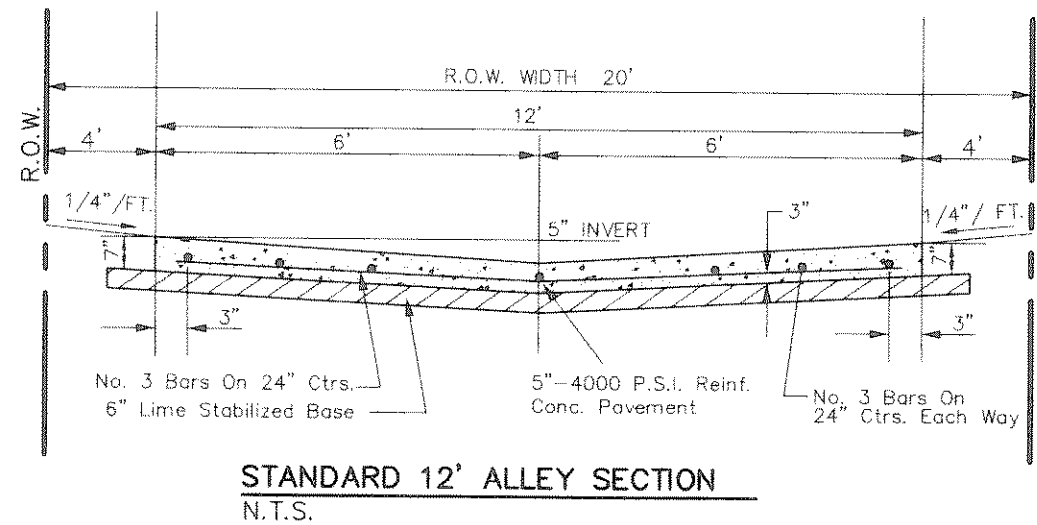
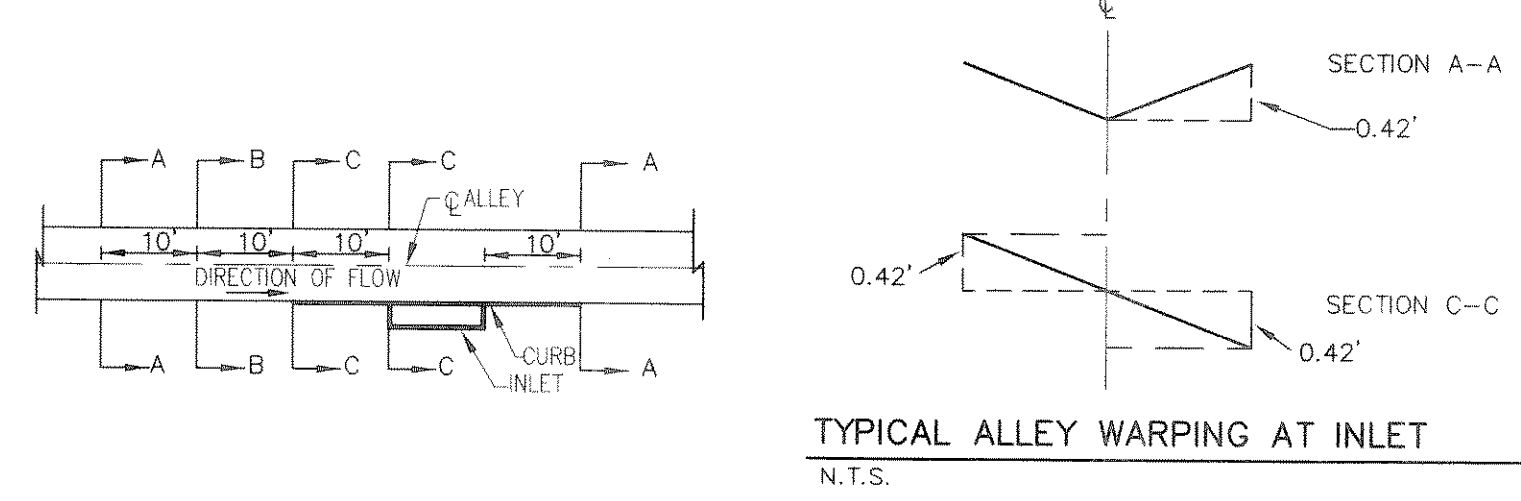
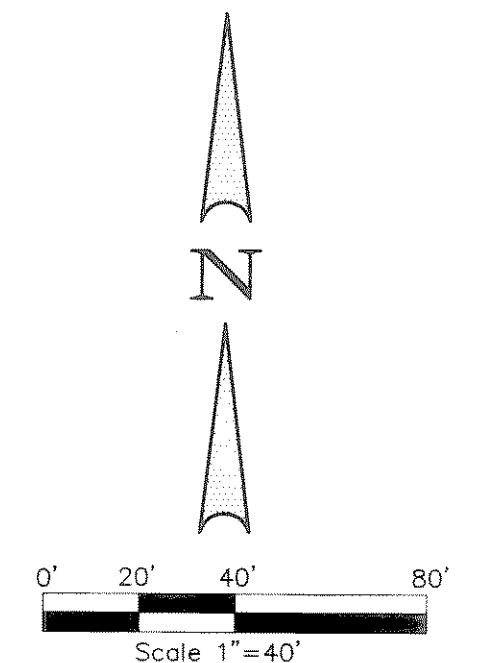


- NOTE:
- 1) PAVEMENT FOR STREETS SHALL CONSIST OF 6" 3600 P.S.I. REINFORCED CONCRETE AND 6" LIME-STABILIZED SUBGRADE WITH 6" PARABOLIC CROWN.
 - 2) PAVEMENT FOR ALLEYS SHALL CONSIST OF 4000 P.S.I. REINFORCED CONCRETE AND 6" LIME-STABILIZED SUBGRADE WITH 5" INVERT. TYPICAL ALLEY SECTION WILL BE 7'-5" WIDE.
 - 3) CONTRACTOR TO RUN LIME SERIES BEFORE CONSTRUCTION.



BENCHMARK: CITY OF ROCKWALL R-19 BRASS MONUMENT AT THE N/W CORNER OF SILVERVIEW & DIAMOND WAY, 500' ± SOUTH OF S.H. 276. ELEV. = 600.89

BENCHMARK: R.R. SPIKE SET IN THE CENTERLINE OF S.H. 276 3600± WEST OF F.M. 549. ELEV. = 583.56



THESE CONSTRUCTION PLANS WERE PREPARED UNDER THE RESPONSIBLE SUPERVISION OF THE PROFESSIONAL ENGINEER REGISTERED PROFESSIONAL ENGINEER NO. 67449.

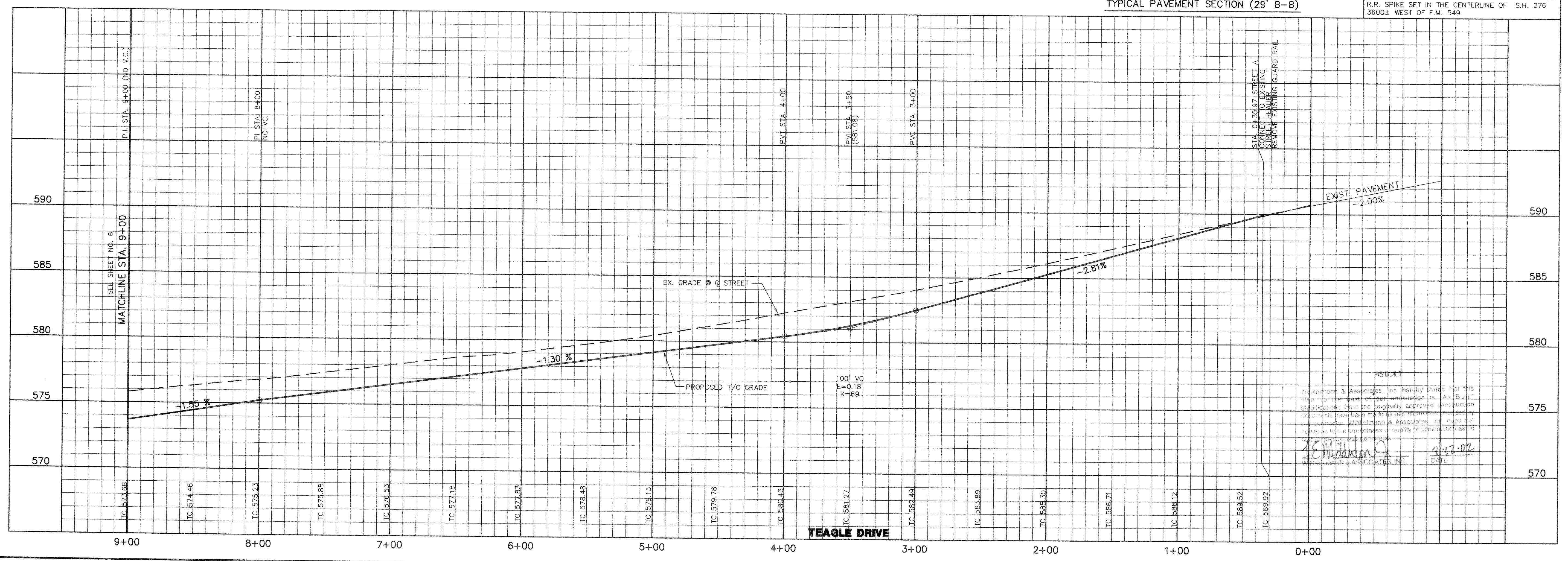
THE SEAL APPEARING ON THIS DOCUMENT WAS AUTHORIZED BY F.E. MIDDLETON, JR., P.E. #67449

NO.	DATE	REVISION	APPROV.

Winkelmann & Associates, Inc.
 CONSULTING CIVIL ENGINEERS & SURVEYORS
 6750 Hillview Plaza Drive, Suite 100
 Rockwall, Texas 75087
 (972) 967-7292
 www.winkelmann.com

LOLAND FARMS, PHASE 4
 W.H. BARD SURVEY, ABSTRACT NO. 25
 CITY OF ROCKWALL
 ROCKWALL COUNTY, TEXAS
 CONTINENTAL HOMES
 621 WEST COLLEGE STREET
 GRAPEVINE, TEXAS 76051

PAVING PLAN & PROFILE - TEAGLE DRIVE
 STA. 0+35.97 TO STA. 9+00
PAVING PLAN - ALLEY 4 STA. 0+00 TO 4+00
PAVING PLAN - ALLEY 5 STA. 0+00 TO 5+71.68



Winkelmann & Associates, Inc. hereby states that this plan to the best of our knowledge and belief is a true and correct representation of the field work performed by our firm and that we are not aware of any facts or circumstances which would render this plan misleading or incomplete. We warrant that the work was performed in accordance with the standards of the profession and that the work was done in a diligent and careful manner.

[Signature]
 DATE: 11-7-02

Scale: 1" = 40'
 Date: 3-2-01
 Designed By: RB
 Drawn By: MK
 Checked By: FEM
 File: 320024P3.DWG View:
 Project No.: 32002.01