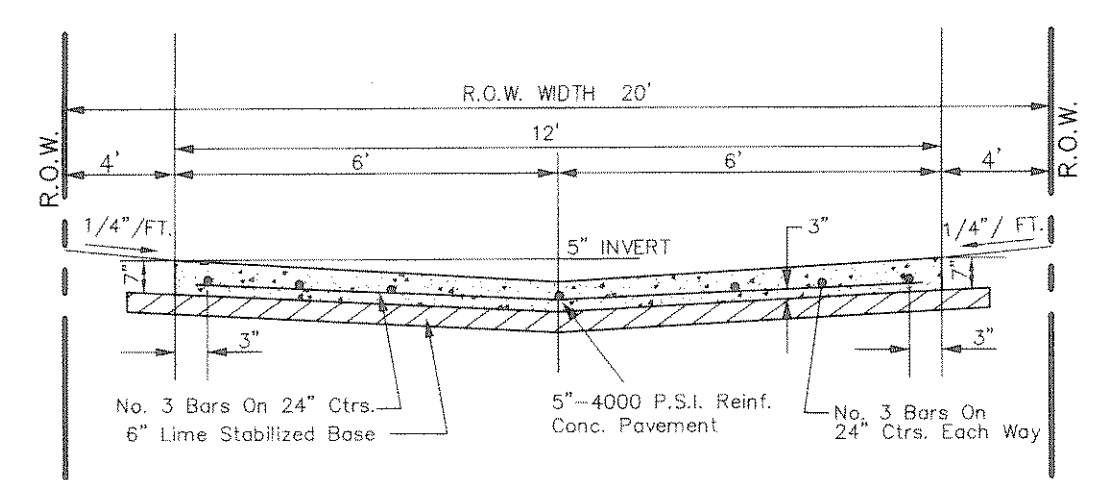
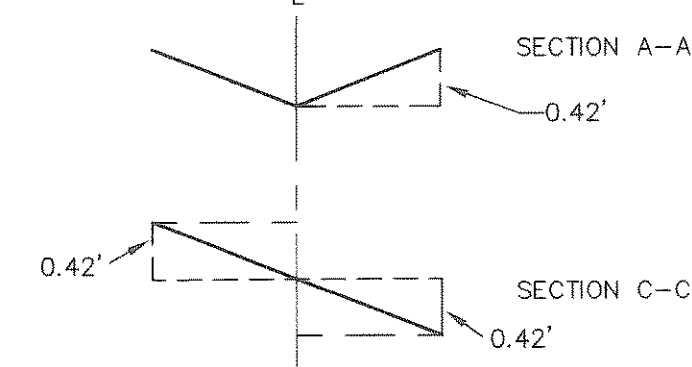
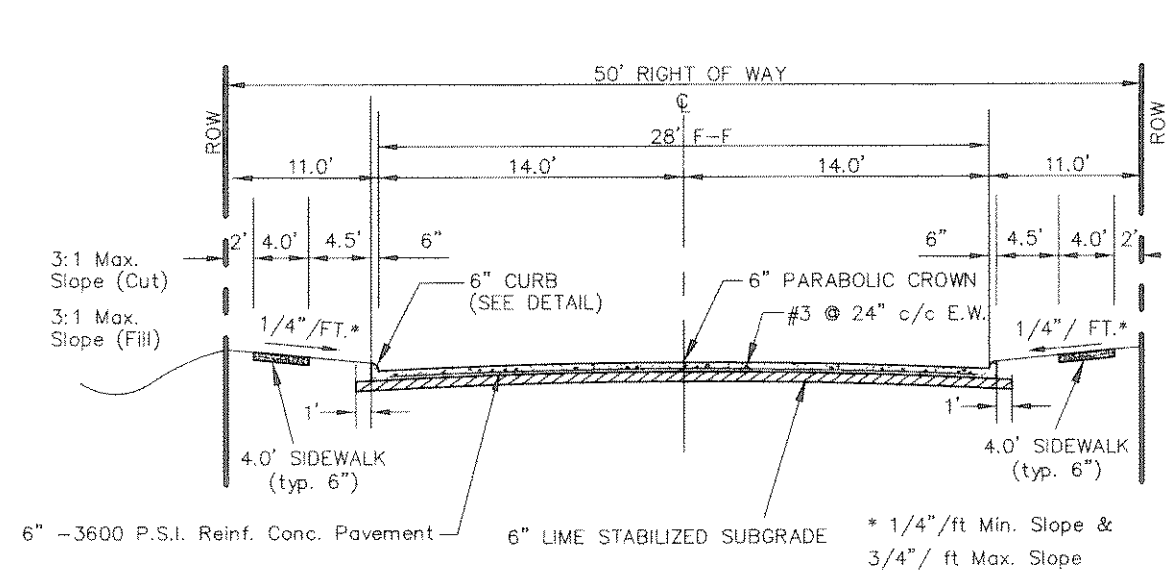


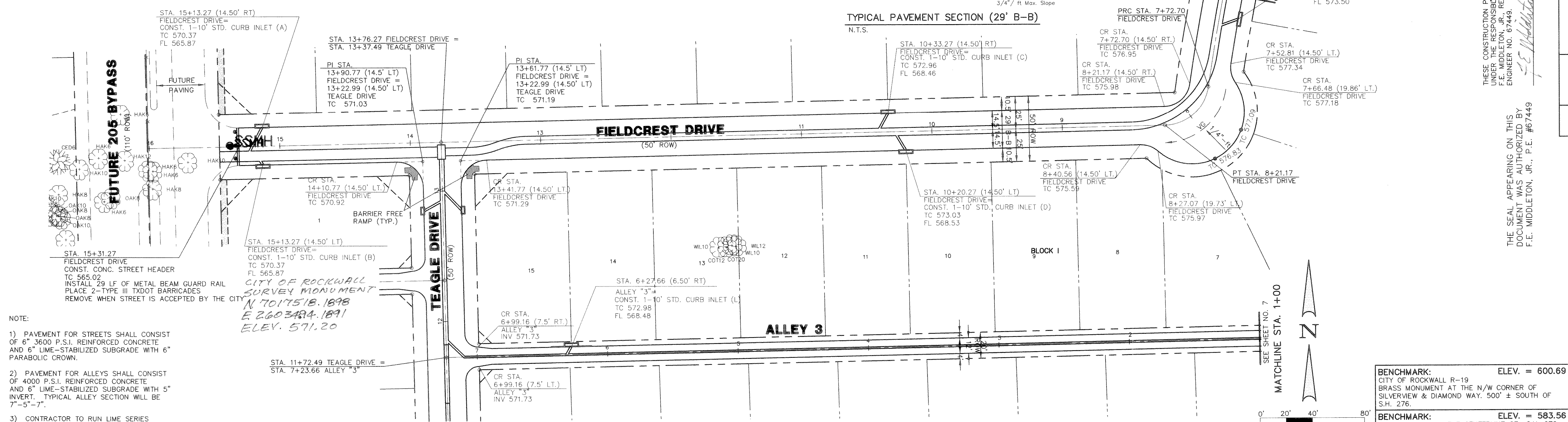
TYPICAL ALLEY WARPING AT INLET
N.T.S.



STANDARD 12' ALLEY SECTION
N.T.S.



TYPICAL PAVEMENT SECTION (29' B-B)
N.T.S.

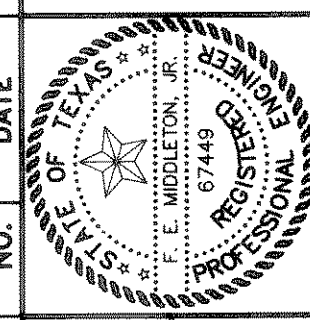


- NOTE:
- 1) PAVEMENT FOR STREETS SHALL CONSIST OF 6" 3600 P.S.I. REINFORCED CONCRETE AND 6" LIME-STABILIZED SUBGRADE WITH 6" PARABOLIC CROWN.
 - 2) PAVEMENT FOR ALLEYS SHALL CONSIST OF 4000 P.S.I. REINFORCED CONCRETE AND 6" LIME-STABILIZED SUBGRADE WITH 5" INVERT. TYPICAL ALLEY SECTION WILL BE 7"-5"-7".
 - 3) CONTRACTOR TO RUN LIME SERIES BEFORE CONSTRUCTION.

THESE CONSTRUCTION PLANS WERE PREPARED UNDER THE RESPONSIBLE SUPERVISION OF F.E. MIDDLETON, JR., REGISTERED PROFESSIONAL ENGINEER NO. 67448.

THE SEAL APPEARING ON THIS DOCUMENT WAS AUTHORIZED BY F.E. MIDDLETON, JR., P.E. #67448

Winkelmann & Associates, Inc.
CONSULTING CIVIL ENGINEERS & SURVEYORS
2200 West Loop West, Suite 100
Dallas, Texas 75220
(972) 482-2799 FAX
www.winkelmann.com

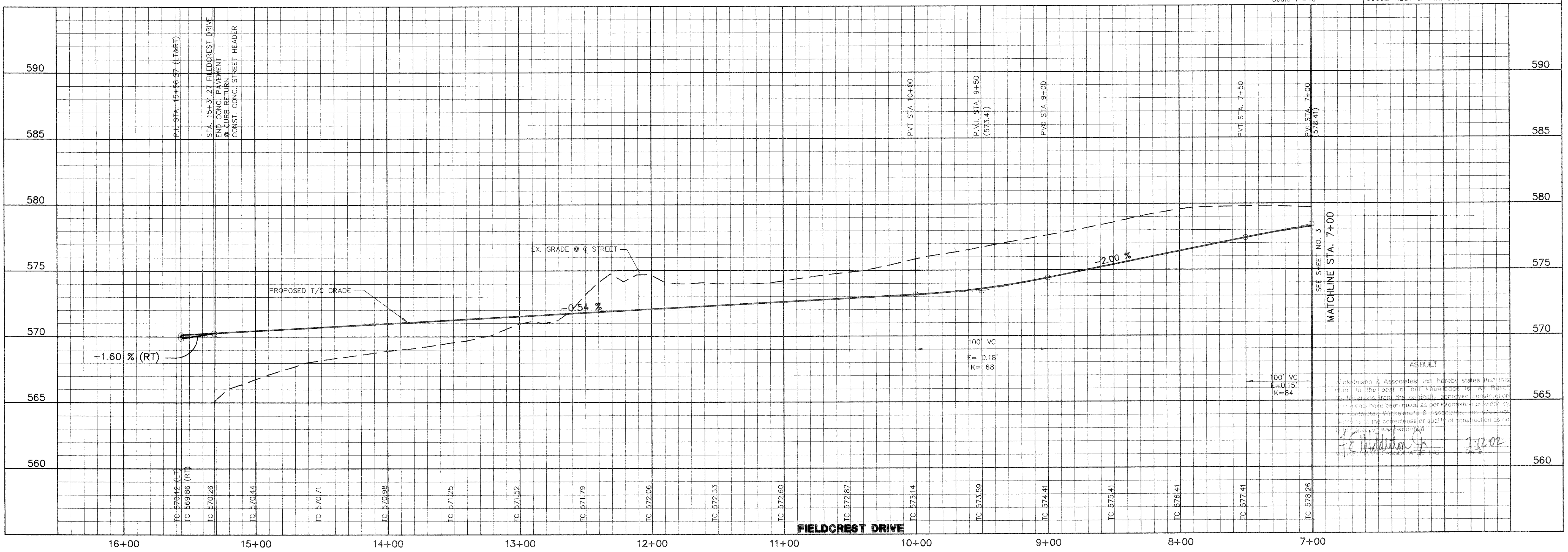
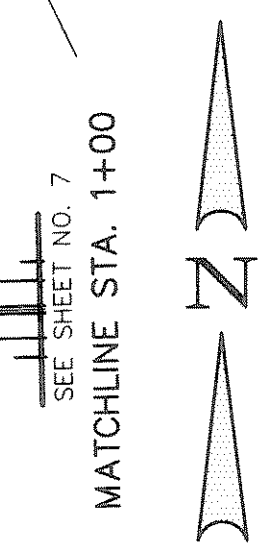


LOFLAND FARMS, PHASE 4
W.H. BARD SURVEY, ABSTRACT NO. 25
CITY OF ROCKWALL
ROCKWALL COUNTY, TEXAS
CONTINENTAL HOMES
621 WEST COLLEGE STREET
GRAPEVINE, TEXAS 76051

PAVING PLAN & PROFILE - FIELDCREST DRIVE
STA. 7+00 TO STA. 15+31.27
PAVING PLAN - ALLEY 3
STA. 1+00 TO STA. 7+23.66

BENCHMARK: CITY OF ROCKWALL R-19
ELEV. = 600.69
BRASS MONUMENT AT THE N/W CORNER OF SILVERVIEW & DIAMOND WAY, 500' ± SOUTH OF S.H. 276.

BENCHMARK: R.R. SPIKE SET IN THE CENTERLINE OF S.H. 276
ELEV. = 583.56
3600± WEST OF F.M. 549



Winkelmann & Associates, Inc. hereby states that this plan to the best of our knowledge is, as far as the facts shown hereon, the substantially completed construction documents have been made as per contract provisions by the contractor. Winkelmann & Associates, Inc. shall not be held liable for the correctness or completeness of the construction documents and shall not be held responsible for any errors or omissions.

F.E. Middleton, Jr.
F.E. MIDDLETON, JR.
REGISTERED PROFESSIONAL ENGINEER
NO. 67448
STATE OF TEXAS

Scale : 1" = 40'
Date : 3-2-01
Designed By : RB
Drawn By : MK
Checked By : FEM
File : 320024P2.DWG View :
Project No. : 32002.01

SHEET
4
OF
24