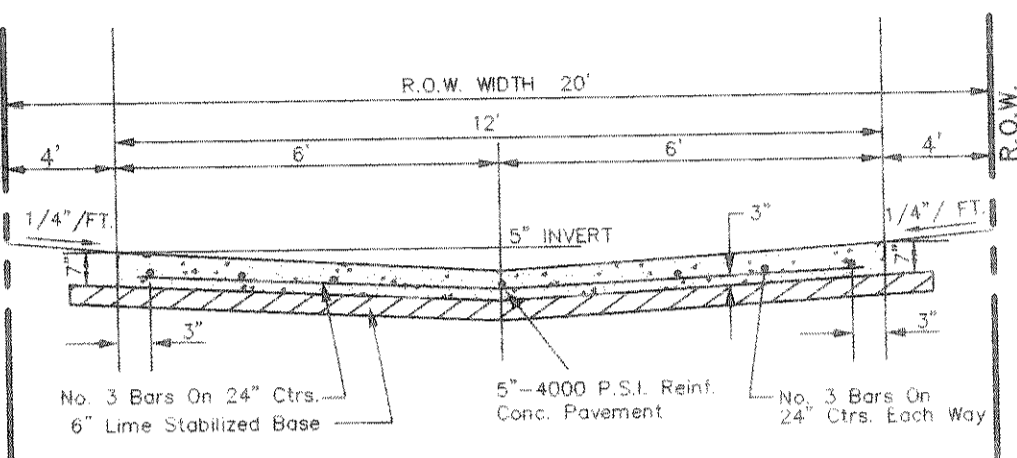
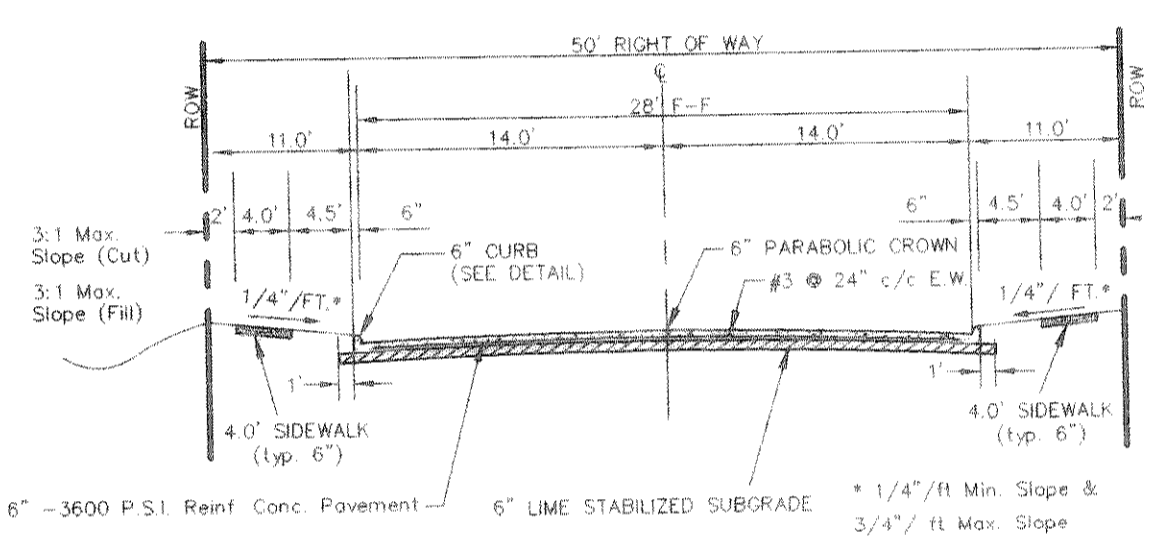


TYPICAL ALLEY WARPING AT INLET  
N.T.S.

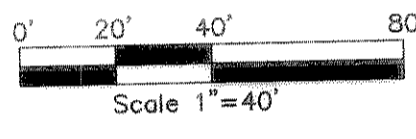
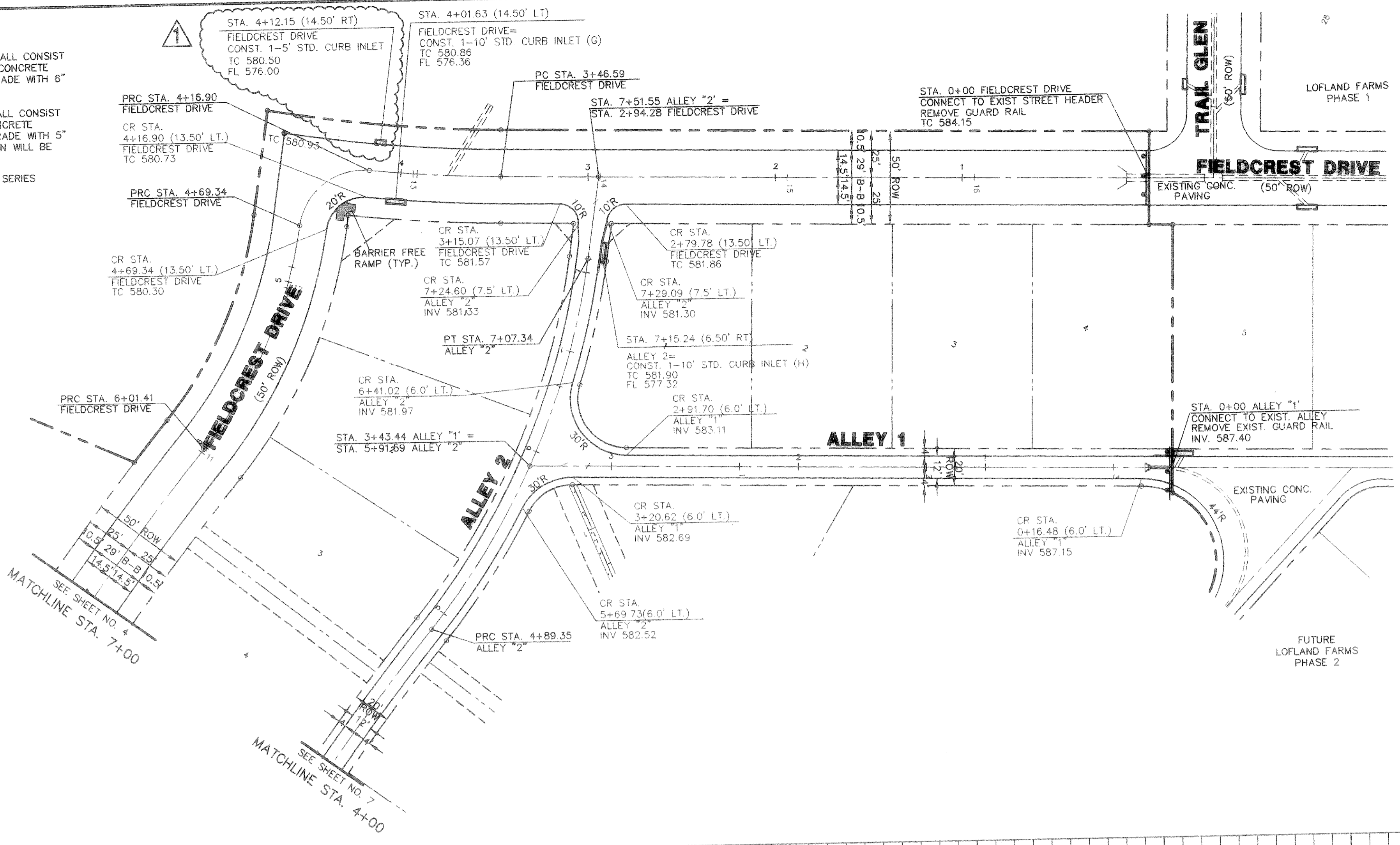


STANDARD 12' ALLEY SECTION  
N.T.S.



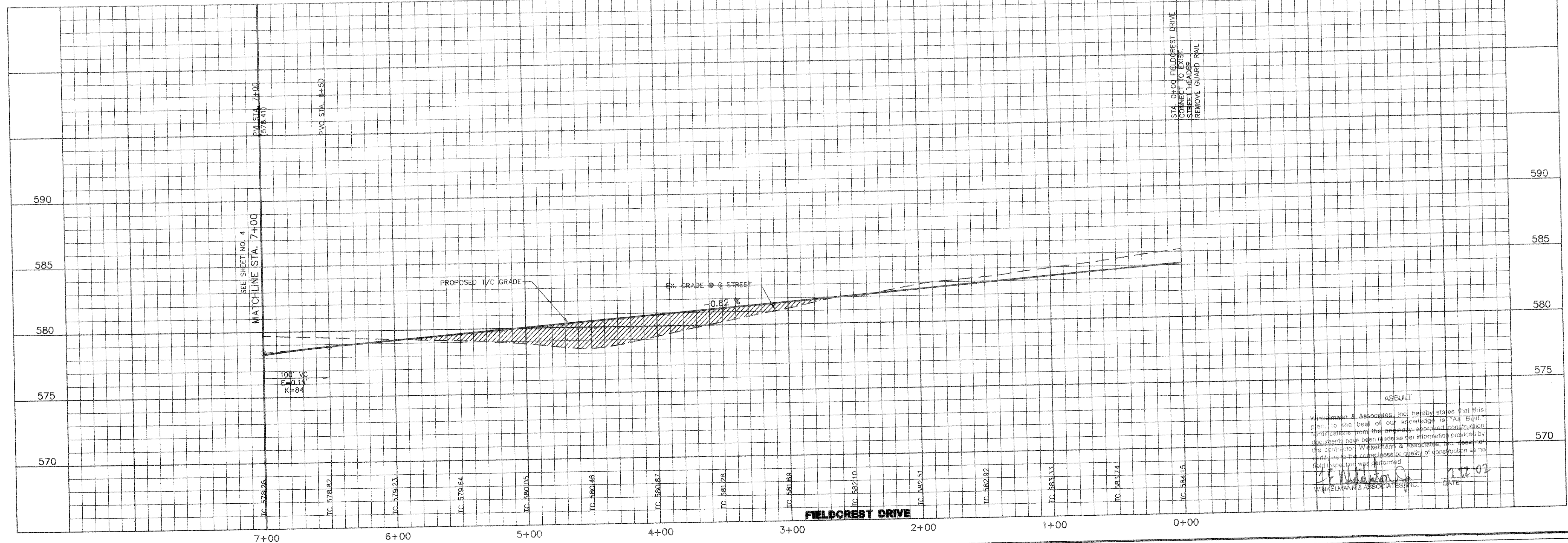
TYPICAL PAVEMENT SECTION (29' B-B)  
N.T.S.

- NOTE:
- PAVEMENT FOR STREETS SHALL CONSIST OF 6" 3600 P.S.I. REINFORCED CONCRETE AND 6" LIME-STABILIZED SUBGRADE WITH 6" PARABOLIC CROWN.
  - PAVEMENT FOR ALLEYS SHALL CONSIST OF 4000 P.S.I. REINFORCED CONCRETE AND 6" LIME-STABILIZED SUBGRADE WITH 5" INVERT. TYPICAL ALLEY SECTION WILL BE 7'-5"-7".
  - CONTRACTOR TO RUN LIME SERIES BEFORE CONSTRUCTION.



BENCHMARK: ELEV. = 600.69  
CITY OF ROCKWALL R-19  
BRASS MONUMENT AT THE N/W CORNER OF  
SILVERVIEW & DIAMOND WAY, 500' ± SOUTH OF  
S.H. 276.

BENCHMARK: ELEV. = 583.56  
R.R. SPIKE SET IN THE CENTERLINE OF S.H. 276  
3600± WEST OF F.M. 549



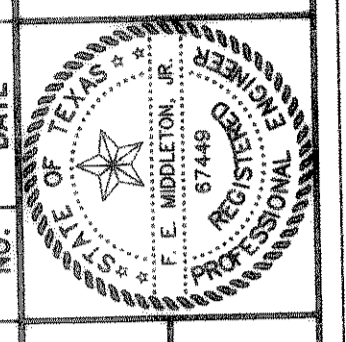
ASEBULT  
Winkelmann & Associates, Inc. hereby states that this plan, to the best of our knowledge is "As Built" information from the previously approved construction documents. No changes have been made as per information provided by the contractor. Winkelmann & Associates, Inc. does not warrant as to the correctness or quality of construction or field inspection was performed.  
Date: 11.12.07  
Winkelmann & Associates, Inc.

THESE CONSTRUCTION PLANS WERE PREPARED UNDER THE CLOSE SUPERVISION OF F.E. MIDDLETON, JR., REGISTERED PROFESSIONAL ENGINEER, NO. 67449.

THE SEAL APPEARING ON THIS DOCUMENT WAS AUTHORIZED BY F.E. MIDDLETON, JR., P.E. #67449

NO.	DATE	REVISION	APPROV.
1	5-20-02	ADDITION OF ONE 5' STD. CURB INLET	FEM

**Winkelmann & Associates, Inc.**  
CONSULTING CIVIL ENGINEERS & SURVEYORS  
6750 Hillcrest Plaza Drive, Suite 100  
Dallas, Texas 75230  
(972) 486-7998 FAX  
www.winkelmann.com



LOFLAND FARMS, PHASE 4  
W.H. BAIRD SURVEY, ABSTRACT NO. 25  
CITY OF ROCKWALL, TEXAS  
ROCKWALL COUNTY, TEXAS  
CONTINENTAL HOMES  
621 WEST COLLEGE STREET  
GRAPEVINE, TEXAS 76051

**PAVING PLAN & PROFILE - FIELDCREST DRIVE**  
**STA. 0+00 TO STA. 7+00**  
**PAVING PLAN - ALLEY 1 STA. 0+00 TO 3+43.44**  
**PAVING PLAN - ALLEY 2 STA. 4+00 TO 7+51.55**

Scale: 1" = 40'	Date: 3-2-01
Designed By: RB	Drawn By: MK
Checked By: FEM	File: 320024PI.DWG
View:	Project No.: 32002.01

SHEET  
3  
OF  
24