

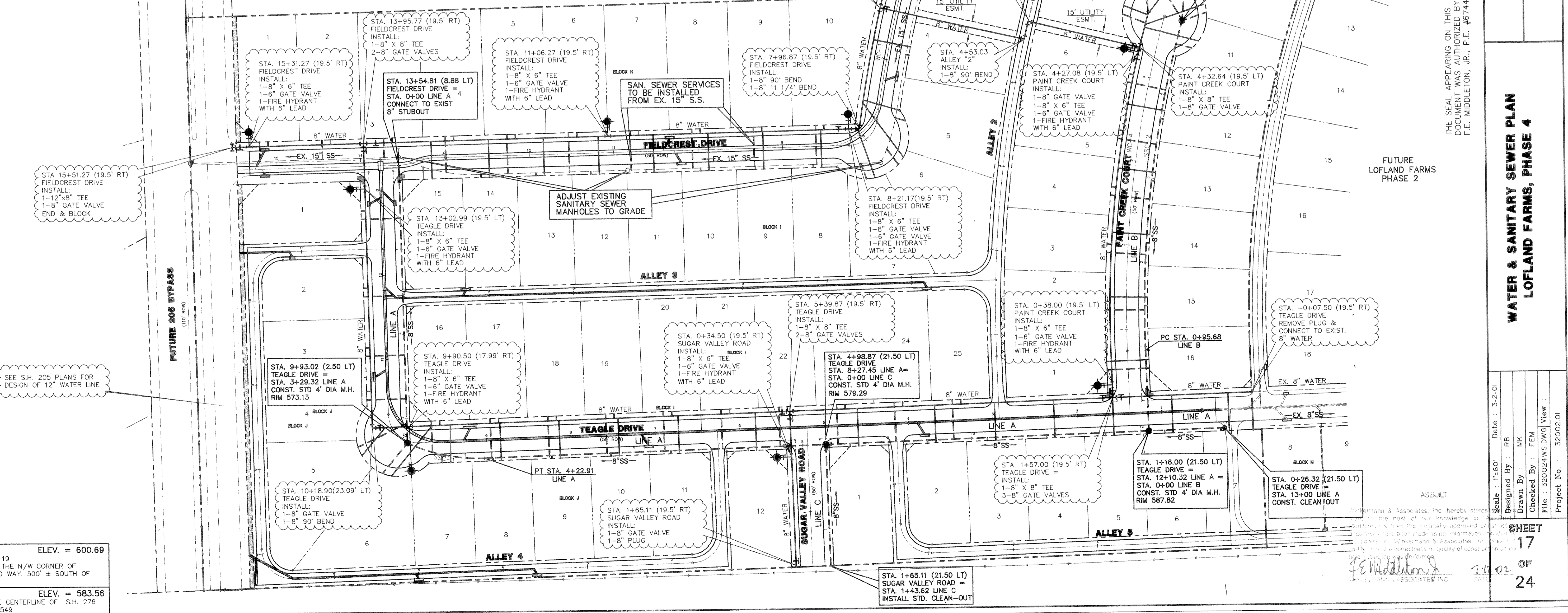
NOTE:
 1. WATER LINE LOCATED 5' BACK OF CURB.
 2. SANITARY SEWER LOCATED 7' BACK OF CURB.
 3. ALL SEWER SERVICES ARE 4".
 4. ALL WATER SERVICES ARE 1" POLYETHYLENE.
 5. ALL WATER AND SEWER LINE TO BE CLASS 200 C-900 DR 14 PVC.
 6. SEWER LINE:
 A. COVER ABOVE THE PIPE > 10' USE SDR 26 PVC
 B. COVER ABOVE THE PIPE < 10' USE SDR 35 PVC

LEGEND
 TC Top of Curb
 P.T. Point of Tangent
 P.C. Point of Curve
 1 Street Station
 ⊕ Sanitary Station

LOT SERVICES DETAIL
 N.T.S.

SANITARY SEWER CURVE TABLE						
CURVE	RADIUS	DELTA	TANGENT	LENGTH	CHORD	BEARING
SSC-1	200.00'	26°48'39"	47.67'	93.59'	92.74'	N 78°23'23" W
SSC-2	1298.50'	17°25'17"	198.95'	394.82'	393.31'	N 06°54'56" E

WATER CURVE TABLE						
CURVE	RADIUS	DELTA	TANGENT	LENGTH	CHORD	BEARING
WC-1	1649.50'	09°27'43"	93.11'	196.03'	185.93'	N 11°06'03" E
WC-2	230.50'	30°50'26"	63.58'	124.07'	122.58'	S 01°00'19" E
WC-3	790.50'	08°43'39"	60.32'	120.41'	120.30'	S 70°32'27" W
WC-4	1539.50'	17°50'48"	210.32'	417.22'	415.54'	N 07°07'41" E



THESE CONSTRUCTION PLANS WERE PREPARED BY THE SUPERVISOR OF PUBLIC WORKS OF THE CITY OF ROCKWALL, TEXAS. REGISTERED PROFESSIONAL ENGINEER NO. 67449.

THE SEAL APPEARING ON THIS DOCUMENT WAS AUTHORIZED BY F.E. MIDDLETON, JR., P.E. #67449

LOFLAND FARMS, PHASE 4
 W.H. BAIRD SURVEY, CONTRACT NO. 25
 ROCKWALL COUNTY, TEXAS
 CONTINENTAL HOMES
 621 WEST COLLEGE STREET
 GRAPEVINE, TEXAS 76051

WATER & SANITARY SEWER PLAN
LOFLAND FARMS, PHASE 4

Scale: 1"=60'
 Date: 3-2-01
 Designed By: RB
 Drawn By: MK
 Checked By: FEM
 File: 320024WS.DWG View:
 Project No.: 32002.01

ASBULT
 SHEET 17 OF 24
 DATE 2-14-02

BENCHMARK: ELEV. = 600.69
 CITY OF ROCKWALL R-19
 BRASS MONUMENT AT THE N/W CORNER OF
 SILVERVIEW & DIAMOND WAY, 500' ± SOUTH OF
 S.H. 276.
 BENCHMARK: ELEV. = 583.56
 R.R. SPIKE SET IN THE CENTERLINE OF S.H. 276
 3600± WEST OF F.M. 549