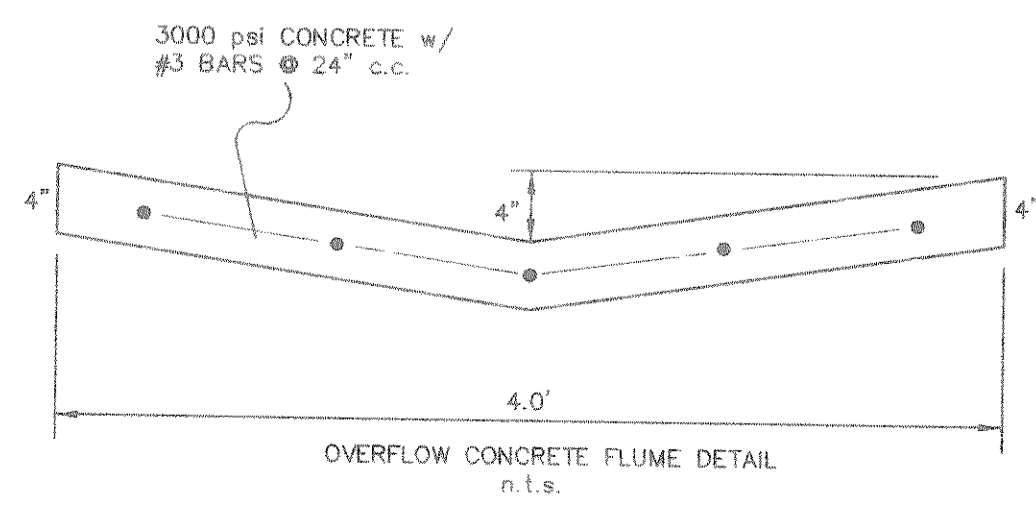
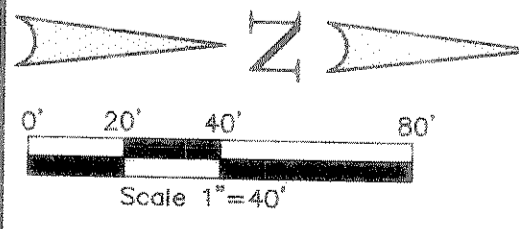
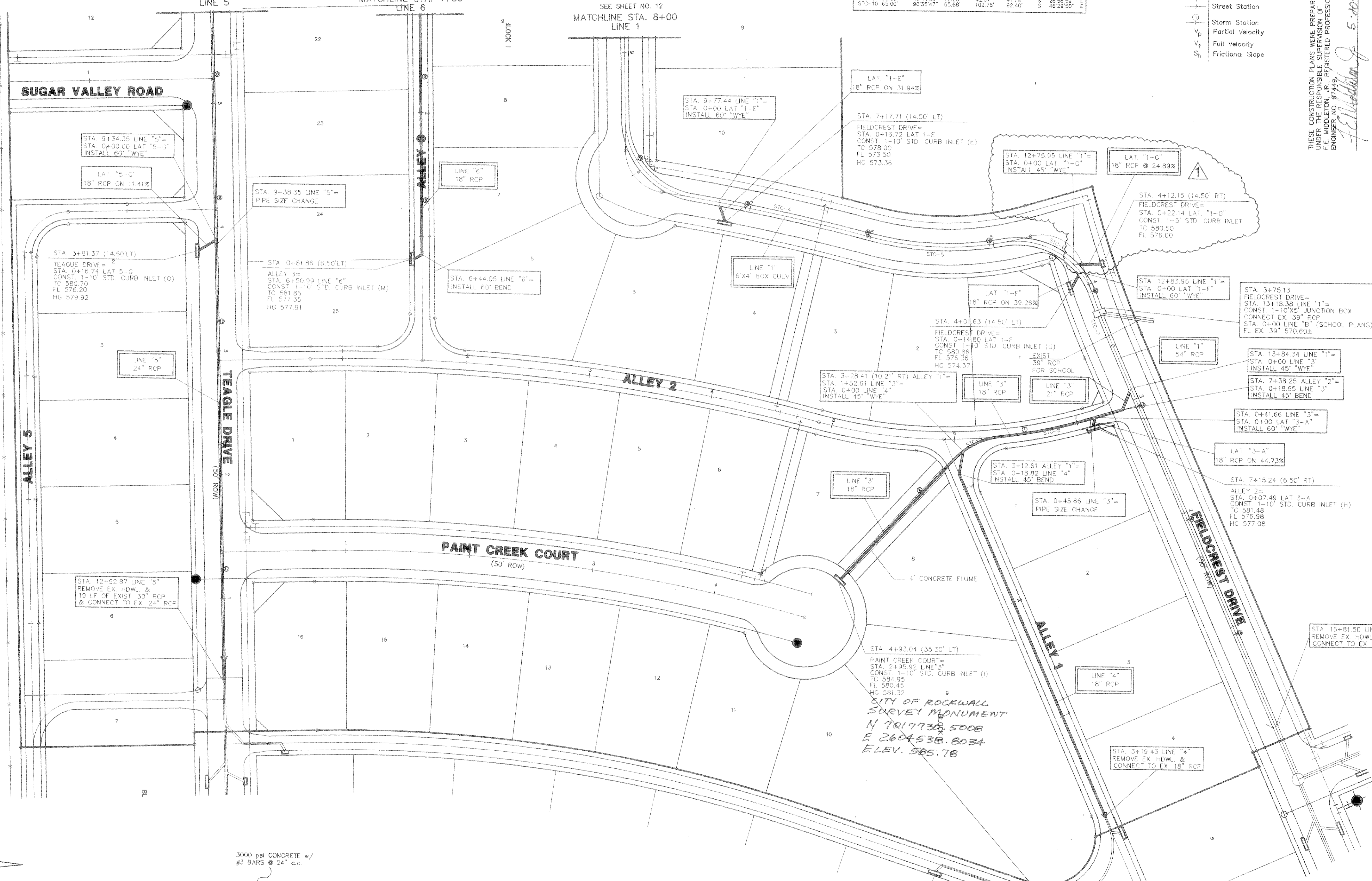


STORM SEWER CURVE TABLE						
CURVE	RADIUS	DELTA	TANGENT	LENGTH	CHORD	BEARING
STC-1	65.00'	19°33'26"	11.20'	22.19'	22.08'	N 79°01'21"
STC-2	65.00'	19°33'26"	11.20'	22.19'	22.08'	N 79°01'21"
STC-3	65.00'	73°37'00"	54.17'	90.32'	83.23'	N 48°59'34"
STC-4	1630.00'	08°08'50"	32.27'	146.44'	146.38'	N 11°45'39"
STC-5	250.00'	25°03'21"	65.25'	109.33'	108.46'	N 01°48'14"
STC-6	65.00'	80°03'37"	44.60'	96.83'	86.61'	S 29°18'29"
STC-7	810.00'	03°09'33"	22.34'	44.65'	44.65'	N 87°45'24"
STC-8	405.00'	09°56'01"	35.20'	70.24'	70.13'	S 11°32'35"
STC-9	60.00'	40°44'56"	22.28'	42.67'	41.78'	S 26°56'59"
STC-10	65.00'	90°35'47"	65.68'	102.76'	92.40'	S 46°29'50"

LEGEND	
HDWL	Headwall
FL	Flow Line
TC	Top of Curb
P.T.	Point of Tangent
P.C.	Point of Curve
+	Street Station
+	Storm Station
V _p	Partial Velocity
V _f	Full Velocity
S _p	Frictional Slope

THESE CONSTRUCTION PLANS WERE PREPARED UNDER THE RESPONSIBLE SUPERVISION OF FREDERICK WINKELMANN, REGISTERED PROFESSIONAL ENGINEER NO. 87443

Winkelman & Associates, Inc.
 CONSULTING CIVIL ENGINEERS & SURVEYORS
 6744 West Loop, Suite 100
 Dallas, Texas 75234
 (972) 467-7091 FAX
 www.winkelman.com



BENCHMARK: ELEV. = 600.69
 CITY OF ROCKWALL R-19
 BRASS MONUMENT AT THE N/W CORNER OF
 SILVERVIEW & DIAMOND WAY, 500' ± SOUTH OF
 S.H. 276.

BENCHMARK: ELEV. = 583.56
 R.R. SPIKE SET IN THE CENTERLINE OF S.H. 276
 3600± WEST OF F.M. 549

Winkelman & Associates, Inc. hereby states that this plan, to the best of our knowledge is "As Built" plan, to the best of our knowledge approved construction Modifications from the originally approved construction documents have been made as per information provided by the contractor. Winkelman & Associates, Inc. does not certify as to the correctness or quality of construction as no field inspection was performed.

Fredrick Winkelman
 WINKELMANN & ASSOCIATES, INC.
 DATE: 1-12-02

NO.	DATE	REVISION	APPROV.
1	5-20-02	ADDITION OF ONE 5' STD. CURB INLET	FEM

THE SEAL APPEARING ON THIS DOCUMENT WAS AUTHORIZED BY F.E. MIDDLETON, JR., P.E. #67449

LOFLAND FARMS, PHASE 4
STORM SEWER PLAN
 W.H. BAIRD SURVEY, ABSTRACT NO. 25
 CITY OF ROCKWALL
 ROCKWALL COUNTY, TEXAS

CONTINENTAL HOMES
 621 WEST COLLEGE STREET
 GRAPEVINE, TEXAS 76051

Scale: H: 1"=40' Date: 10-25-01
 Designed By: RB
 Drawn By: MK
 Checked By: FEM
 File: 320024ST2DW.dwg View:
 Project No.: 32002.01

SHEET 13 OF 24