

STORM SEWER CURVE TABLE

CURVE	RADIUS	DELTA	TANGENT	LENGTH	CHORD	BEARING
STC-1	65.00'	19°33'26"	11.20'	22.19'	22.08'	N 79°01'21" E
STC-2	65.00'	19°33'26"	11.20'	22.19'	22.08'	N 79°01'21" E
STC-3	65.00'	79°37'00"	54.17'	80.32'	83.23'	N 48°59'54" E
STC-4	1630.00'	05°08'50"	73.27'	146.44'	146.39'	N 11°45'29" E
STC-5	280.00'	29°03'21"	56.52'	109.33'	108.46'	N 01°48'14" E
STC-6	65.00'	80°03'37"	54.60'	80.83'	83.61'	N 29°18'22" E
STC-7	810.00'	03°09'33"	22.34'	44.66'	44.64'	N 67°45'24" E
STC-8	405.00'	09°56'01"	35.20'	70.22'	70.13'	N 11°32'52" E
STC-9	60.00'	40°44'56"	42.67'	41.78'	26.56'99"	S 26°56'99" W
STC-10	65.00'	90°35'47"	65.68'	102.78'	92.40'	S 46°29'50" W

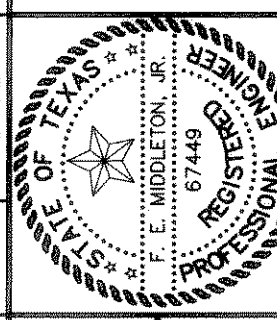
LEGEND

HDWL	Headwall
FL	Flow Line
TC	Top of Curb
P.T.	Point of Tangent
P.C.	Point of Curve
⊙	Street Station
⊙	Storm Station
$\frac{1}{2}$	Partial Velocity
$\frac{3}{4}$	Full Velocity
$\frac{1}{4}$	Frictional Slope

THESE CONSTRUCTION PLANS WERE PREPARED BY ME OR UNDER MY CLOSE PERSONAL SUPERVISION AND I AM A REGISTERED PROFESSIONAL ENGINEER IN THE STATE OF TEXAS. F.E. MIDDLETON, JR. REGISTERED PROFESSIONAL ENGINEER NO. 67449.

THE SEAL APPEARING ON THIS DOCUMENT WAS AUTHORIZED BY F.E. MIDDLETON, JR., P.E. #67449

Winkelmann & Associates, Inc.
CONSULTING CIVIL ENGINEERS
6750 Hillcrest Plaza Drive, Suite 100
Rockwall, Texas 75087
(972) 482-7998 FAX



LOFLAND FARMS, PHASE 4
W.H. BAIRD SURVEY, ABSTRACT NO. 25
CITY OF ROCKWALL
ROCKWALL COUNTY, TEXAS

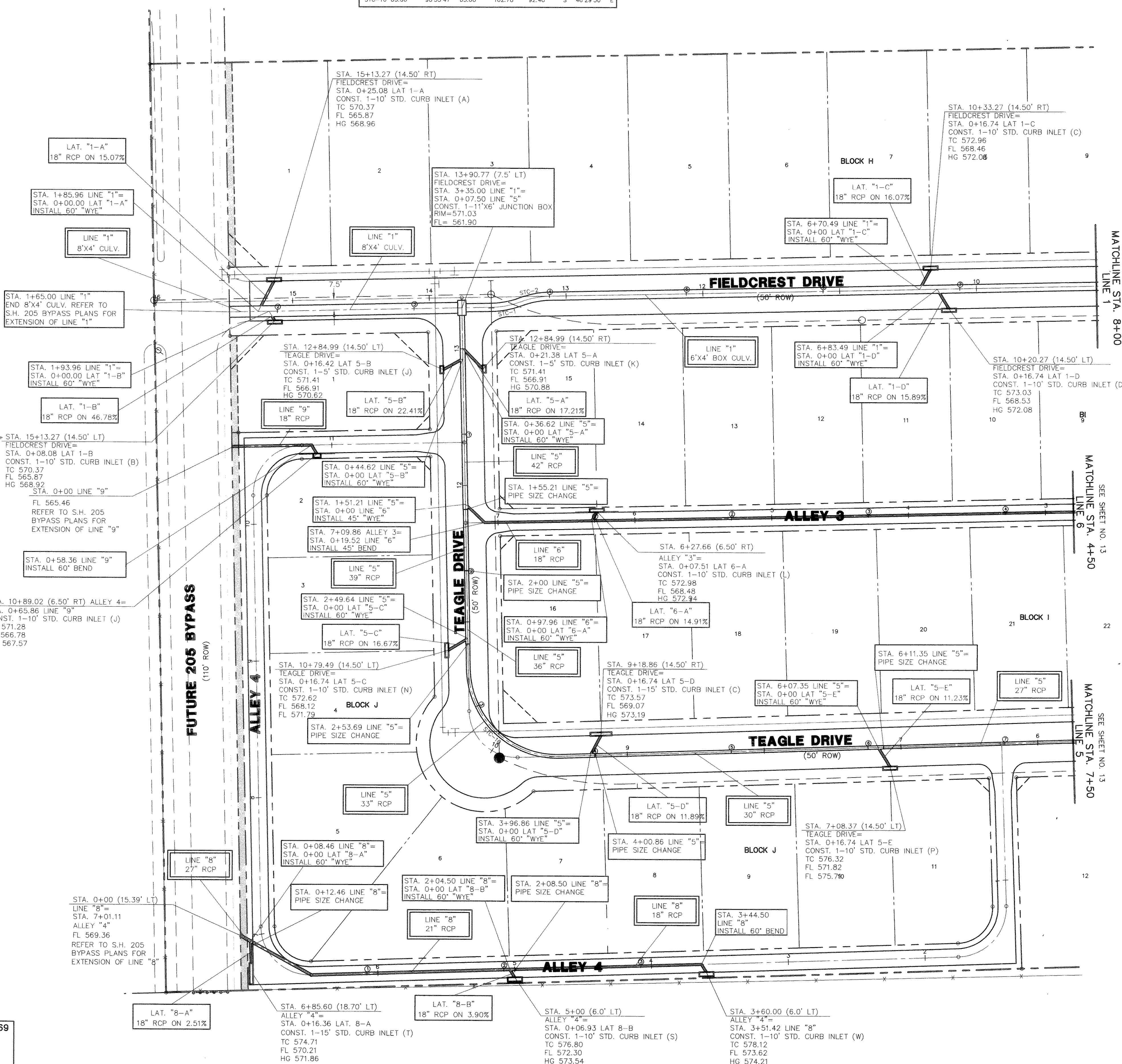
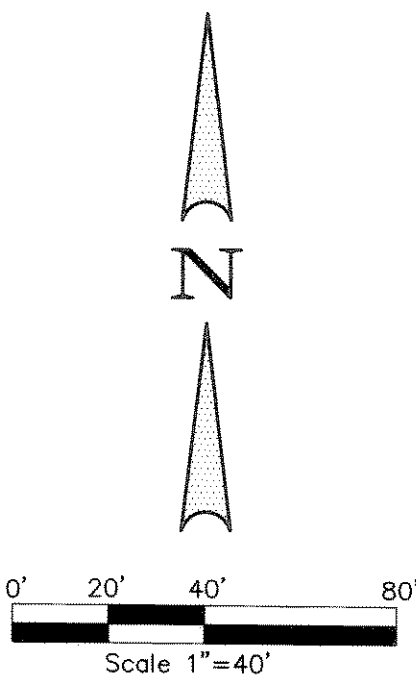
**LOFLAND FARMS, PHASE 4
STORM SEWER PLAN**

Scale: 1" = 40'
Designed By: RB
Drawn By: MK
Checked By: FEM
File: 320024STLDWG View:
Project No.: 3200201

SHEET 12 OF 24

BENCHMARK: ELEV. = 600.69
CITY OF ROCKWALL R-19
BRASS MONUMENT AT THE N/W CORNER OF
SILVERVIEW & DIAMOND WAY, 500' ± SOUTH OF
S.H. 276.

BENCHMARK: ELEV. = 583.56
R.R. SPIKE SET IN THE CENTERLINE OF S.H. 276
3600± WEST OF F.M. 549



ASBUILT
Winkelmann & Associates, Inc. hereby states that this plan, to the best of our knowledge is "As Built". Modifications from the originally approved construction documents have been made as per information provided by the contractor. Winkelmann & Associates, Inc. does not certify as to the correctness or quality of construction as no field inspection was performed.
F.E. Middleton, Jr.
WINKELMANN & ASSOCIATES, INC.
DATE: 1-12-02